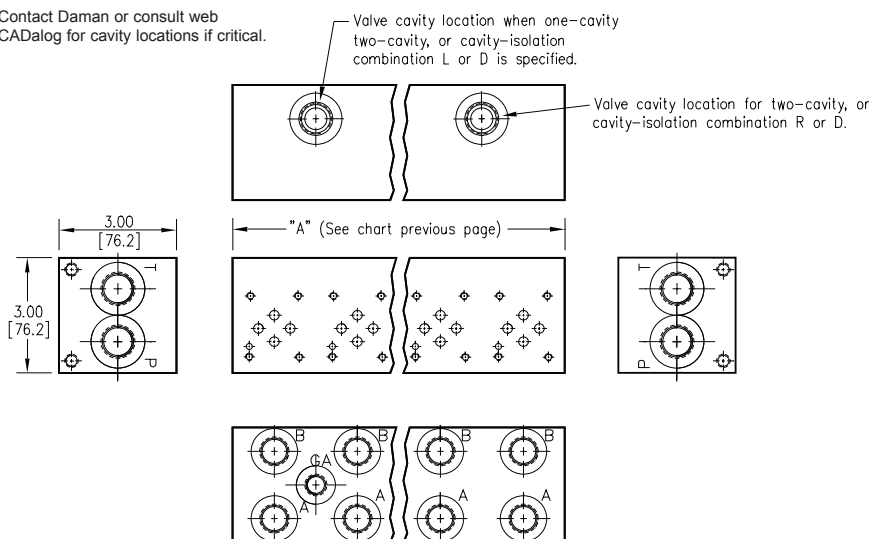




# Options - D03 Standard Flow Parallel Manifold

Contact Daman or consult web  
CAdalog for cavity locations if critical.

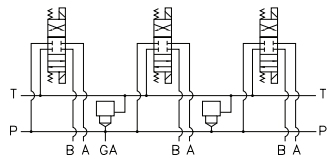


## ISOLATIONS

Daman isolation options allow a manifold to have two independent pressure and/or tank ports. Isolations are drilled rather than plugged to ensure a leakproof and failproof isolation.

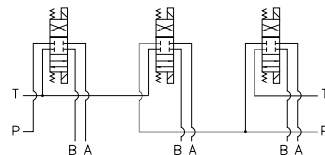
Ordering code letter:	* Isolation is between stations:	Available # of stations:
2.125 [54.0] spacing		
A	01 & 02	02-10
B	02 & 03	03-11
C	03 & 04	04-12
D	04 & 05	05-13
E	05 & 06	06-14
F	06 & 07	07-15
G	07 & 08	08-16
H	08 & 09	09-16
J	09 & 10	10-16
4.00 [101.6] spacing		
A	01 & 02	02-08
B	02 & 03	03-08
C	03 & 04	04-08
D	04 & 05	05-08
E	05 & 06	06-08
F	06 & 07	07-08
G	07 & 08	08

Parallel Circuit with one or two Cavities



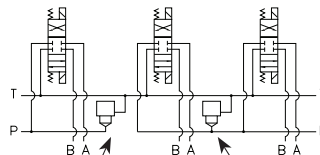
Valves with P in the nose and T out the side must be used.

Parallel Circuit with Isolations



Manifold shown with P isolation between 1 & 2 (PA), and T isolation between 2 & 3 (TB).

Cavity & Isolation Combinations



Option code L  
Cavity left of isolation  
Option code R  
Cavity right of isolation  
Option code D includes both cavities

\* Stations are numbered left to right.

### NOTES:

- 1) The GA port is not available on a (1) station manifold.
- 2) The GA port is not available when a pressure isolation is located between stations 1 & 2.
- 3) Some cavity and isolation combinations are not possible with spacing code 2. Consult factory to determine availability.

## Ordering Information

...	Cavity	Pressure Isolation	Tank Isolation	Cavity & Isolation Combinations
-----	--------	--------------------	----------------	---------------------------------

Cavity	
Omit if cavities not required	
C	One Common cavity: No solenoid clearance. C-10-2 (P in nose)
CC	Two Common cavities: With solenoid clearance C-10-2 (P in nose) Available 03-16 stations with spacing code 2; Available 02-08 stations with spacing code 4. Not available in combina- tion with isolation options.
S	One Sun Cavity: T-10A (P in nose) See Tech Info for valves.

Pressure Isolation	
Omit if P isolation not required	
PA...PJ	Available with spacing code 2
PA...PG	Available with spacing code 4

Tank Isolation	
Omit if T isolation not required	
TA...TJ	Available with spacing code 2
TA...TG	Available with spacing code 4

Cavity & Isolation Combinations	
Specify when using a combi- nation of cavity and isolation options. Cavities do not have solenoid clearance.	
L	Cavity is located left of the isolation.
R	Cavity is located right of the isolation.
D	Two cavities, one each side of isolation. (Use with cavity option codes C or S only.)