

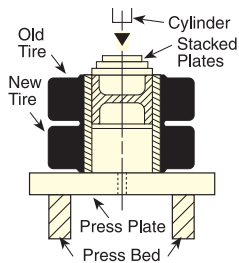
SHOP PRESS

Accessories

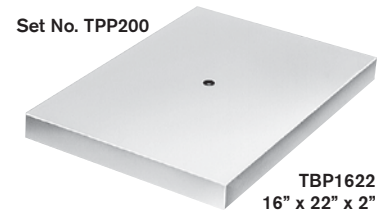
Rubber Tire Removing/Installing set

Now an easy way to press solid rubber tires. The TPP200 uses plates instead of combination rings to press a rim from an old tire into a new one. Plates are stacked so none is more than 2 in. smaller than the one under it to keep the plates from bending. They can be used on any Power Team press with 55-ton capacity or more. NOTE: Many tires require 100 tons of force or more, depending on tire size and condition. These plates withstand max. force of 150 tons.

No. TPP200 – Tire press plate set. Includes 13 press plates, spacer pushing adapter and press bed plate. For use on solid rubber tires from 4" to 17³/₄" I.D.



Pressing rim into new tire on Power Team Press.



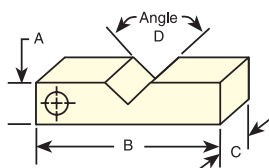
TPP1 – TPP13
3⁷/₈" – 17⁵/₈" x 3³/₄"



TPS6
3³/₄" x 6"

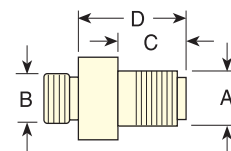
Set No. TPP200		
Order No.	Tire Size I.D.	Plate O.D.
TPP1	4"	3 ⁷ / ₈ "
TPP2	5"	4 ⁷ / ₈ "
TPP3	6", 6 ¹ / ₄ "	5 ⁷ / ₈ "
TPP4	6 ¹ / ₂ "	6 ³ / ₈ "
TPP5	8"	7 ⁷ / ₈ "
TPP6	10"	9 ⁷ / ₈ "
TPP7	10 ¹ / ₂ "	10 ³ / ₈ "
TPP8	11 ¹ / ₄ "	11 ¹ / ₈ "
TPP9	12", 12 ¹ / ₈ "	11 ⁷ / ₈ "
TPP10	14"	13 ⁷ / ₈ "
TPP11	15"	14 ⁷ / ₈ "
TPP12	16"	15 ⁷ / ₈ "
TPP13	17 ³ / ₄ "	17 ⁵ / ₈ "
TPS6	Spacer/Pushing Adapter	3 ³ / ₄ " x 6"
TBP1622	Bed Plate	16" x 22" x 2"

PRESS ACCESSORIES, "V" BLOCKS & THREADED ADAPTERS



V-BLOCKS (in).

Order No.	Width A	Length B	Thick C	Angle D
1890	2	9	1 ¹ / ₄	120°
1891	2 ¹ / ₂	11 ¹ / ₂	1 ³ / ₄	
1892	3 ¹ / ₂	14	2	
1893	5	14	1 ¹ / ₂	
207395	5 ³ / ₄	23	2 ¹ / ₂	

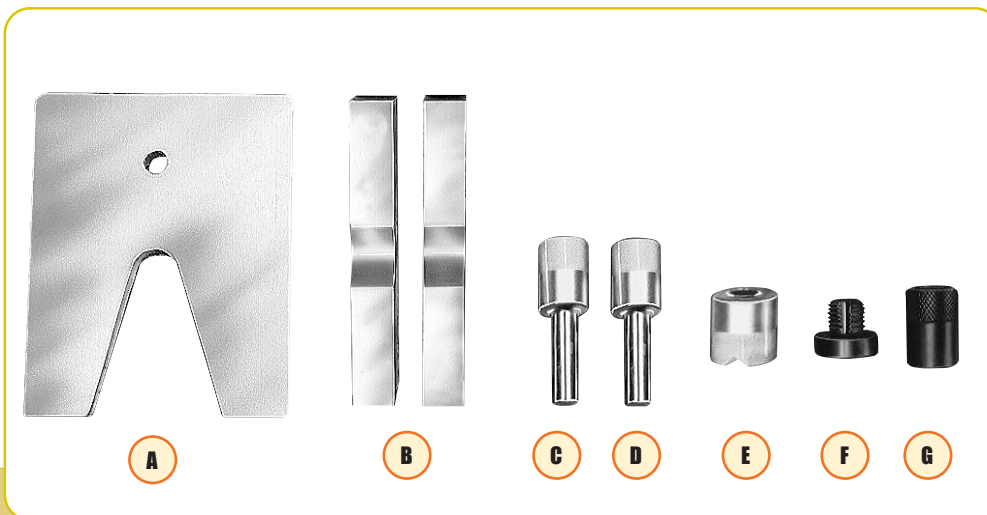


THREADED ADAPTER DIMENSIONS (in).

Adapter				
No.	A	B	C	D
38597	1 - 8	1 - 8	3/4	1 ⁵ / ₁₆
38953	1 ¹ / ₄ - 7	1 ¹ / ₂ - 16	2 ³ / ₄	4 ³ / ₈
37368	1 ⁵ / ₈ - 5 ¹ / ₂	—	1 ¹¹ / ₁₆	2 ¹ / ₂
43562	2 ¹ / ₄ - 12	—	2 ¹ / ₄	3
38954	1 ⁵ / ₈ - 5 ¹ / ₂	1 ¹¹ / ₁₆ - 8	3 ³ / ₄	4 ³ / ₁₆
43563	2 ¹ / ₄ - 12	2 ³ / ₄ - 12	2 ¹ / ₄	3 ³ / ₁₆
46070	2 ¹ / ₄ - 12	2 - 4 ¹ / ₂	2 ¹ / ₄	3 ³ / ₁₆

Press Accessory Kit

Make your Power Team press even more versatile with one of these accessory sets. These sets will eliminate makeshift set-ups. Many of these items can be used with pullers you already have.



ORDERING INFORMATION

Use With Press:	Order No.	A V-Throat Press Plate	B V-Blocks	C Pushing Adapter ⚠	D Pushing Adapter ⚠	E V-Pushing Adapter	F Threaded Adapter Single-Acting Cyls.	Double-Acting Cyls.	G Pushing Adapter
10 Ton	SPA10	1888	1890 (Pr).	201923 1/2" dia. shank	201454 3/4" dia. shank	34806	Included in Set 38597	38597	
25 Ton	SPA25	1889	1891 (Pr).	34510 3/4" dia. shank	34511 1" dia. shank	34807 Not Included Order Separately	Not Included Order Separately 38953	38953	
55 Ton	SPA55	—	1892 (Pr).	34755 1" dia. shank	34756 1 1/2" dia. shank	34808	Not Included Order Separately 37368	38954	
80/100 Ton	SPA100	—	1893** (Pr).	—	—	36469	Not Included Order Separately 43562 46070 ***	43563 46070	21332
150/200 Ton	SPA200	—	207395 (Pr).	—	44458 2 1/4" dia. shank	44457	None*	—	—

* Pushing adapters thread directly into RD15013 and RD20013 cylinders.

** V-blocks, No. 1893, are recommended for use with 80-ton Roll-Bed® press. Not recommended for use with 100-ton Roll-Bed® press.

*** For 80-ton Roll-Bed® press.

NOTE: Individual press accessories may be ordered separately.



CAUTION: Pushing adapters are designed for use with specific shaft sizes, and depending on the condition of the shaft ends, the adapter may not withstand the full press tonnage. Always use a protective blanket or other suitable guard when pressing.

