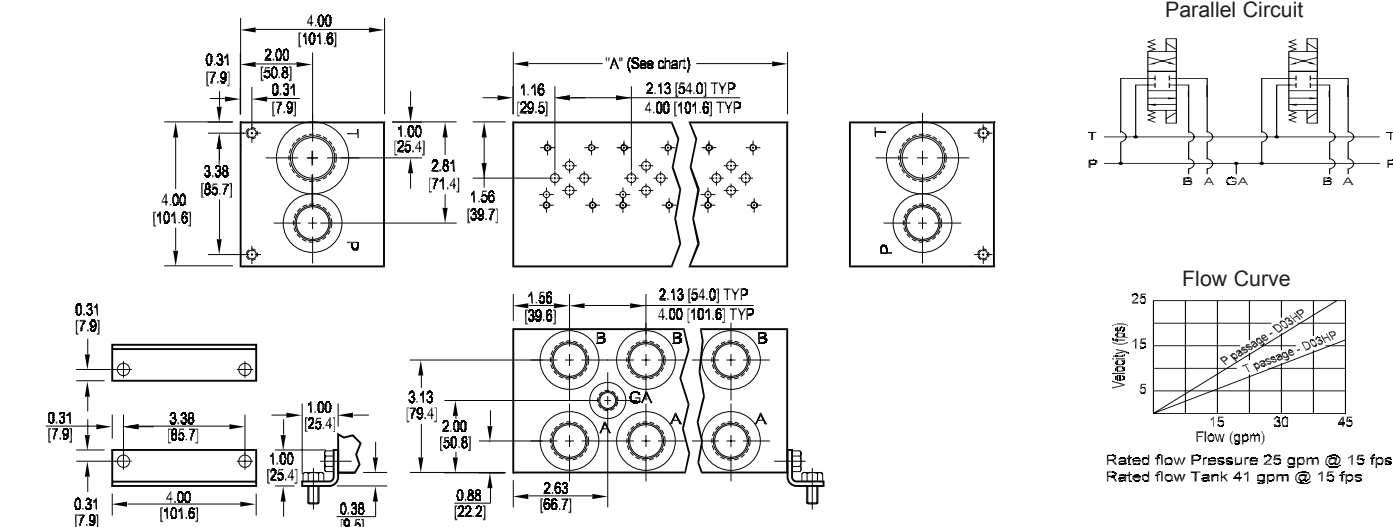
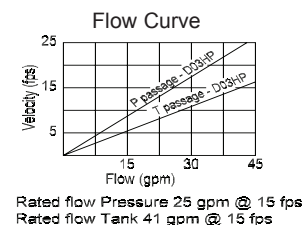
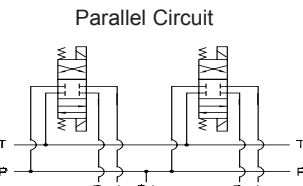


D03 High Flow Parallel Circuit Manifold



No. of stations	* 01	02	03	04	05	06	07	08	09	10	11	12	13	14	15	16
"A" length (code 2 spa.) inch [mm]	3.13 [79.5]	5.25 [133.4]	7.38 [187.5]	9.50 [241.3]	11.63 [295.4]	13.75 [349.3]	15.88 [403.4]	18.00 [457.2]	20.13 [511.3]	22.25 [565.2]	24.38 [619.1]	26.50 [673.1]	28.63 [727.1]	30.75 [781.1]	32.88 [835.0]	35.00 [889.0]
apx. weight alum lb [kg]	5 [2]	8 [4]	12 [5]	15 [7]	18 [8]	22 [10]	25 [11]	28 [13]	32 [15]	35 [16]	39 [18]	42 [19]	46 [21]	49 [22]	52 [24]	56 [25]
apx. weight iron lb [kg]	13 [6]	22 [10]	30 [14]	39 [18]	48 [22]	57 [26]	66 [30]	74 [34]	83 [38]	92 [42]	--	--	--	--	--	--
"A" length (code 4 spa.) inch [mm]	--	7.13 [181.1]	11.13 [282.7]	15.13 [384.5]	19.13 [485.9]	23.13 [587.5]	27.13 [689.1]	31.13 [790.7]								
apx. weight alum lb [kg]	--	11 [5]	17 [8]	24 [11]	30 [14]	37 [17]	43 [20]	49 [22]								
apx. weight iron lb [kg]	--	29 [13]	46 [21]	62 [28]	79 [36]	96 [44]	112 [51]	129 [59]								

* Length of 01 station with relief cavity is 4.00 [101.6]. Gauge port not available on 01 station.



All mounting hardware is supplied. See page 62 for itemized list.

Port code	Valve mtg.	Manifold mtg.
P, S	#10-24 UNC x 0.63 [16] DP	0.31-18 UNC x 0.44 [11.1] DP
B, M, T	M5 ISO 6H x 0.63 [16] DP	M8 ISO 6H x 0.44 [11.1] DP

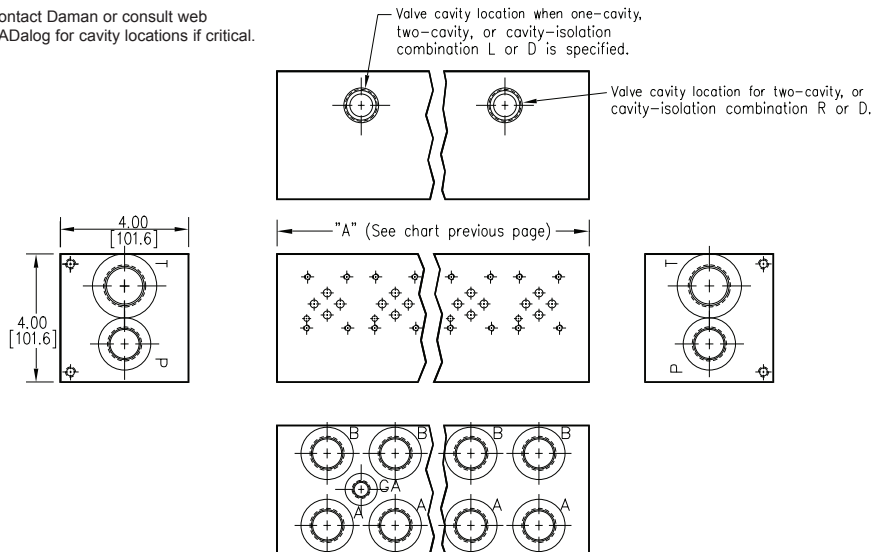
Specifications, descriptions, and dimensional data are subject to correction or change without notice or incurring obligation. Download latest catalog page revisions at www.daman.com.

Ordering Information

Material	Valve Pattern	Circuit	No. of Stations	Valve Spacing	Port Threads	Options
Material A Aluminum - 6061-T6 3000† psi • 20.7 MPa D Ductile Iron - D4512 5000† psi • 34.5 MPa N Electroless Nickel Coated Ductile Iron - D4512 5000† psi • 34.5 MPa † Working pressure should be considered in accordance with ISO 4413 to determine appropriate material type.	Valve Pattern D03 ISO 4401-03-02 NFPA T3.5.1-D03 See Tech information	Circuit HP Parallel Circuit High Flow	No. of Stations Aluminum 01...16 Available with spacing code 2 02...08 Available with spacing code 4 Ductile Iron 01...10 Available with spacing code 2 02...08 Available with spacing code 4	Valve Spacing 2 2.13 inch 54.0 mm 4 4.00 inch 101.6 mm	Port Threads P NPTF • ANSI B1.20.3 0.75 1.00 0.25 S SAE • ISO 11926 -12 -16 -6 B BSPP • ISO 1179 0.75 1.00 none M ISO • ISO 6149 M27 M33 none T BSPT • ISO 7 0.75 1.00 none	Options See next page for available options and ordering codes.

Options - D03 High Flow Parallel Manifold

Contact Daman or consult web CADalog for cavity locations if critical.

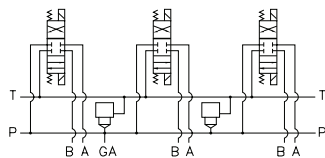


ISOLATIONS

Daman isolation options allow a manifold to have two independent pressure and/or tank ports. Isolations are drilled rather than plugged to ensure a leakproof and failproof isolation.

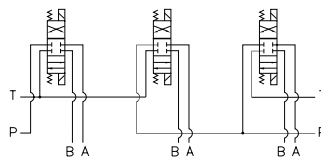
Ordering code letter:	* Isolation is between stations:	Available # of stations:
2.125 [54.0] spacing		
A	01 & 02	02-10
B	02 & 03	03-11
C	03 & 04	04-12
D	04 & 05	05-13
E	05 & 06	06-14
F	06 & 07	07-15
G	07 & 08	08-16
H	08 & 09	09-16
J	09 & 10	10-16
4.00 [101.6] spacing		
A	01 & 02	02-08
B	02 & 03	03-08
C	03 & 04	04-08
D	04 & 05	05-08
E	05 & 06	06-08
F	06 & 07	07-08
G	07 & 08	08

Parallel Circuit with one or two Cavities



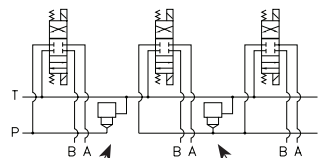
Valves with P in the nose and T out the side must be used.

Parallel Circuit with Isolations



Manifold shown with P isolation between 1 & 2 (PA), and T isolation between 2 & 3 (TB).

Cavity & Isolation Combinations



Option code L
Cavity left of isolation
Option code R
Cavity right of isolation
Option code D includes both cavities

* Stations are numbered left to right.

NOTES:

- 1) The GA port is not available on a (1) station manifold.
- 2) The GA port is not available when a pressure isolation is located between stations 1 & 2.
- 3) Some cavity and isolation combinations are not possible with spacing code 2. Consult factory to determine availability.

Ordering Information

...	Cavity	Pressure Isolation	Tank Isolation	Cavity & Isolation Combinations
-----	--------	--------------------	----------------	---------------------------------

Cavity	
Omit if cavities not required	
C	One Common cavity: No solenoid clearance. C-16-2 (P in nose)
CC	Two Common cavities: With solenoid clearance C-16-2 (P in nose) Available 03-16 stations with spacing code 2; Available 02-08 stations with spacing code 4. Not available in combination with isolation options.
S	One Sun Cavity: T-3A (P in nose) See Tech Info for valves.

Pressure Isolation	
Omit if P isolation not required	
PA...PJ	Available with spacing code 2
PA...PG	Available with spacing code 4

Tank Isolation	
Omit if T isolation not required	
TA...TJ	Available with spacing code 2
TA...TG	Available with spacing code 4

Cavity & Isolation Combinations	
Specify when using a combination of cavity and isolation options. Cavities do not have solenoid clearance.	
L	Cavity is located left of the isolation.
R	Cavity is located right of the isolation.
D	Two cavities, one each side of isolation. (Use with cavity option codes C or S only.)