



**W620**  
Max Flow: 150 gpm (568 lpm)



## W620 In-Line Cartridge Filters

**Working Pressures to:** 6000 psi  
41,380 kPa  
413.8 bar

**Rated Static Burst to:** 15,000 psi  
103,400 kPa  
1034 bar

**Fatigue Pressure Rating:** 3000 psi  
20,700 kPa  
207 bar

**Flow Range To:** 150 gpm  
568 lpm



### Applications

- High Pressure Circuits
- In-Plant Systems
- Meets HF3 Specification
- Mobile Equipment

## Features

The W620 filter assembly contains the popular HF3 filter. It offers a reverse flow bypass valve option available for hydrostatic transmissions. Donaldson DT high-performance 4-layer media is offered in five different media grades. The differential pressure indicator line is designed to work with the wide assortment of bypass valves. Thermal lockout and surge control are two key features incorporated in many of the differential pressure indicators.

- Conforms to HF3 specifications
- Head material: cast iron
- Housing material: steel
- Reverse flow bypass valve option available

### Beta Rating

- Performance to  $\beta_{<4(c)} = 1000$

### Porting Size Options

- SAE-16, -20, 24 O-ring
- 1¼" SAE 4-Bolt Flange Code 61 or 62
- 1½" SAE 4-Bolt Flange Code 61

### Replacement Filter Lengths

- 8.22" / 203.2mm
- 12.91" / 330.2mm
- 16.84" / 406.4mm

### Operating Temperatures

- -20° to 250°F (-29° to 121°C)

### Standard Bypass Ratings

- 50 psi / 345 kPa / 3.5 bar
- 90 psi / 621 kPa / 6.2 bar
- No Bypass

### Assembly Weight

- 12.91": 33 lbs / 14.97 kg
- 19.48": 42 lbs / 19.05 kg
- 22.00": 48 lbs / 21.77 kg

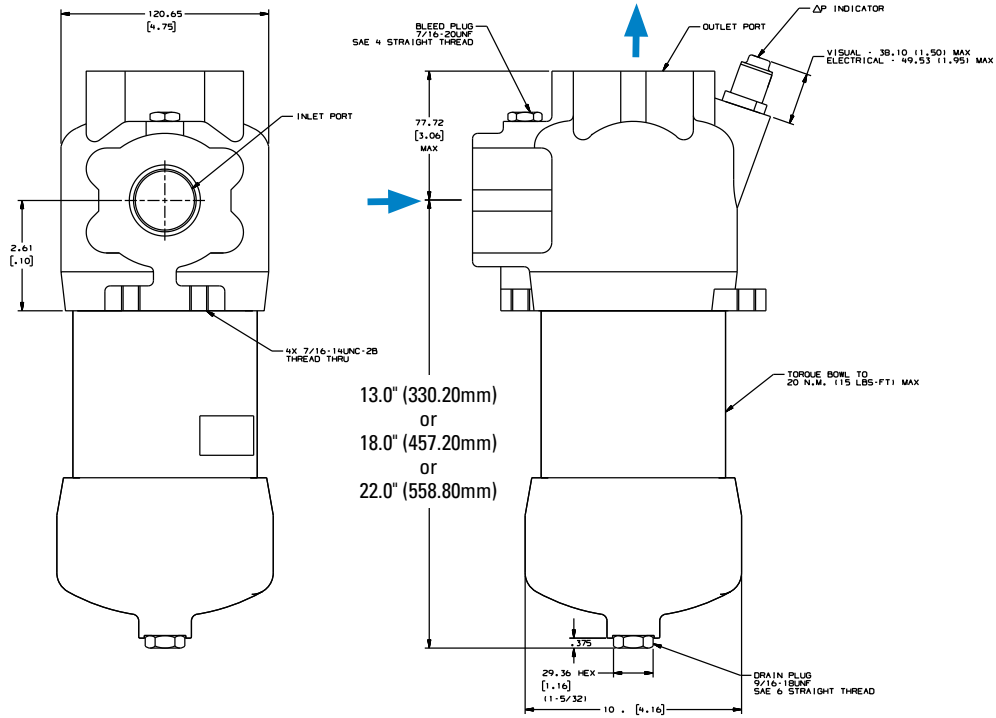
### Filter Collapse Ratings

- 150 psi / 1034 kPa / 10.3 bar (standard)
- 3000 psi / 20,700 kPa / 206.8 bar (high collapse)

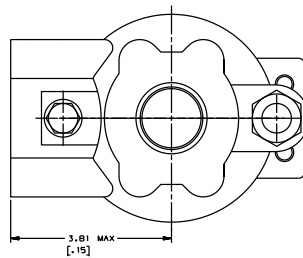
## W620 Specification Illustrations

All dimensions are shown in millimeters [inches].

### Assembly - Side View



### Head - Top View





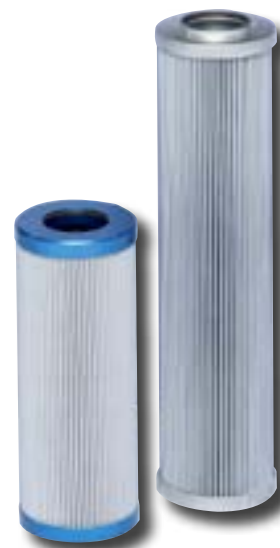
**W620**  
Max Flow: 150 gpm (568 lpm)



## W620 Components

### High-Performance DT Filter Choices

Media Type	$\beta_{x(e)} = 1000$ Rating based on ISO 16889	Length		Donaldson Part No.	Comments
		in	mm		
DT Synteq	<4 $\mu\text{m}$	8.22	209	P566209	DT-9600-8-2UM
Synthetic	5 $\mu\text{m}$	8.22	209	P566210	DT-9600-8-5UM
	8 $\mu\text{m}$	8.22	209	P566211	DT-9600-8-8UM
	12 $\mu\text{m}$	8.22	209	P566212	DT-9600-8-14UM
	23 $\mu\text{m}$	8.22	209	P566213	DT-9600-8-25UM
	5 $\mu\text{m}$	8.19	208	P566366	DT-9601-8-5UM, High collapse
	12 $\mu\text{m}$	8.19	208	P566367	DT-9601-8-14UM, High collapse
	<4 $\mu\text{m}$	8.22	209	P567875	DX2-9600-8-2UM
	5 $\mu\text{m}$	8.22	209	P565122	DX2-9600-8-5UM
	8 $\mu\text{m}$	8.22	209	P565123	DX2-9600-8-8UM
	12 $\mu\text{m}$	8.22	209	P564936	DX2-9600-8-14UM
	<4 $\mu\text{m}$	12.91	328	P566214	DT-9600-13-2UM
	5 $\mu\text{m}$	12.91	328	P566215	DT-9600-13-5UM
	8 $\mu\text{m}$	12.91	328	P566216	DT-9600-13-8UM
	12 $\mu\text{m}$	12.91	328	P566217	DT-9600-13-14UM
	23 $\mu\text{m}$	12.91	328	P566218	DT-9600-13-25UM
	5 $\mu\text{m}$	12.85	326	P566368	DT-9601-13-5UM, High collapse
	12 $\mu\text{m}$	12.85	326	P566369	DT-9601-13-14UM, High collapse
	<4 $\mu\text{m}$	12.91	328	P567876	DX2-9600-13-2UM
	5 $\mu\text{m}$	12.91	328	P565188	DX2-9600-13-5UM
	8 $\mu\text{m}$	12.91	328	P565189	DX2-9600-13-8UM
	12 $\mu\text{m}$	12.91	328	P565187	DX2-9600-13-14UM
	<4 $\mu\text{m}$	16.84	428	P566219	DT-9600-16-2UM
	5 $\mu\text{m}$	16.84	428	P566220	DT-9600-16-5UM
	8 $\mu\text{m}$	16.84	428	P566221	DT-9600-16-8UM
	12 $\mu\text{m}$	16.84	428	P566222	DT-9600-16-14UM
	23 $\mu\text{m}$	16.84	428	P566223	DT-9600-16-25UM
	5 $\mu\text{m}$	16.84	428	P566370	DT-9601-16-5UM, High collapse
	12 $\mu\text{m}$	16.84	428	P566371	DT-9601-16-14UM, High collapse
	<4 $\mu\text{m}$	16.81	427	P567877	DX2-9600-16-2UM
	5 $\mu\text{m}$	16.81	427	P565196	DX2-9600-16-5UM
	8 $\mu\text{m}$	16.81	427	P565197	DX2-9600-16-8UM
	12 $\mu\text{m}$	16.81	427	P565195	DX2-9600-16-14UM



#### Filter Notes

All Donaldson DT and DX2 filters utilize glass fiber media with an epoxy-based resin system for the ultimate in chemical compatibility.

All Donaldson DT and DX2 filters are potted with epoxy-based adhesives.

Standard collapse DT designs are double wire-backed using epoxy-coated steel mesh for maximum pleat support and dirt capacity.

High collapse designs are double wire-backed using stainless steel mesh.

High collapse designs are also potted into machined aluminum endcaps for greater filter integrity in critical applications.

Viton® seals are standard on all Donaldson DT and DX2 filters. Viton® is a registered trademark of E. I. DuPont de Nemours and Company.

DX2 filters utilize nylon mesh for pleat support.



## Head Assembly Choices

Port Size	Bypass Rating	Seal Material	Indicator Style & Location	Donaldson Part No.	Comments
SAE-16 O-ring	50 psi / 3.45 bar	Buna-N	Port Machined & Plugged	P574252	
SAE-24 O-ring	50 psi / 3.45 bar	Buna-N	Port Machined & Plugged	P574253	
1-1/2" SAE 4 Bolt Flange, Code 61	50 psi / 3.45 bar	Buna-N	Port Machined & Plugged	P574254	
1-1/4" SAE 4 Bolt Flange, Code 62	50 psi / 3.45 bar	Viton	Port Machined & Plugged	P575931	Reverse flow check valve
1-1/4" SAE 4 Bolt Flange, Code 62	50 psi / 3.45 bar	Viton	Port Machined & Plugged	P575932	
SAE-16 O-ring	90 psi / 6.21 bar	Viton	Port Machined & Plugged	P575933	
SAE-20 O-ring	50 psi / 3.45 bar	Viton	Port Machined & Plugged	P575934	
SAE-20 O-ring	50 psi / 3.45 bar	Viton	Port Machined & Plugged	P575935	Reverse flow check valve

## Housing Choices

Housing Length	Seal Material	Donaldson Part No.
4" (101.1mm)	Buna-N	X011557
8" (203.2mm)	Buna-N	X011559
13" (330.2mm)	Buna-N	X011554
16" (406.4mm)	Buna-N	X011555

## Indicator Choices

Indicator Pressure Setting	Connector Style	Seal Material	Donaldson Part No.	Thermal Lockout	Surge Control	Reset
<b>Visual Pop-up Models</b>						
35 psi / 241 kPa	NA	Buna-N	P572347	No	No	Auto
35 psi / 241 kPa	NA	Buna-N	P572348	Yes	Yes	Manual
35 psi / 241 kPa	NA	Viton	P567456	Yes	Yes	Manual
70 psid / 482 kPa	NA	Buna-N	P572319	Yes	Yes	Manual
70 psid / 482 kPa	NA	Viton	P567457	Yes	Yes	Manual
<b>Electrical / Visual Models</b>						
35 psi / 241 kPa	Hirschman	Buna-N	P572327	No	No	Auto
35 psi / 241 kPa	Brad Harrison	Buna-N	P572329	No	No	Auto
35 psi / 241 kPa	Hirschman	Buna-N	P572384	Yes	Yes	Manual
35 psi / 241 kPa	Hirschman	Viton	P567458	Yes	Yes	Manual
35 psi / 241 kPa	Brad Harrison	Buna-N	P572385	Yes	Yes	Manual
35 psi / 241 kPa	3 wire flying leads	Buna-N	P572349	No	No	Auto
70 psi / 482 kPa	Hirschman	Buna-N	P572320	Yes	Yes	Manual
70 psi / 482 kPa	Brad Harrison	Buna-N	P567459	Yes	Yes	Manual
70 psi / 482 kPa	Hirschman	Buna-N	P572373	Yes	No	Manual
70 psi / 482 kPa	Hirschman	Viton	P569639	Yes	No	Manual
<b>Electrical Models</b>						
35 psi / 241 kPa	Hirschman	Buna-N	P572359	No	No	Auto
35 psi / 241 kPa	Brad Harrison	Buna-N	P572361	No	No	Auto
70 psi / 482 kPa	Hirschman	Buna-N	P572369	No	No	Auto

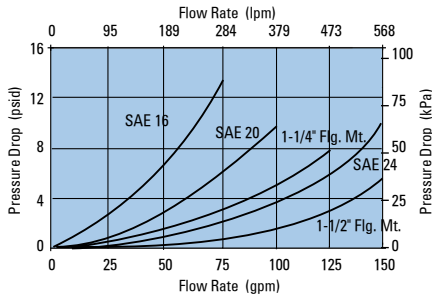
## Head/Bowl/Housing Seal Kits

Donaldson Part No.	Material
X011182	Buna
X011183	Viton

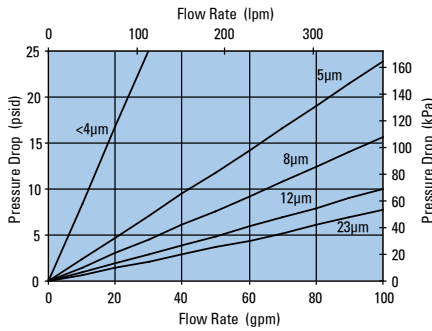


## Performance Data

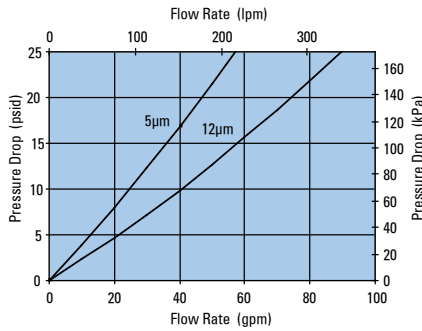
**W620 Housing Only**



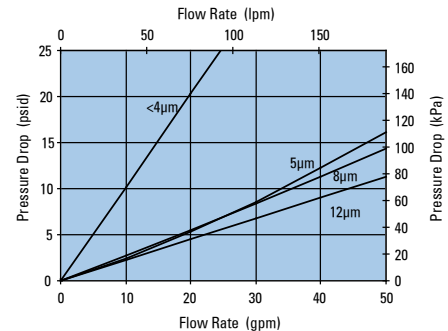
**W620 8" DT Filter Only**  
DT-9600-8, 8.22"/208.8mm



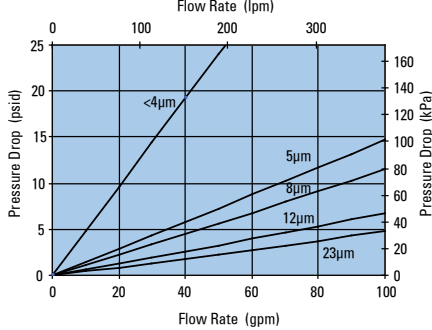
**W620 8" DT Filter Only**  
DT-9601-8, 8.19"/208mm



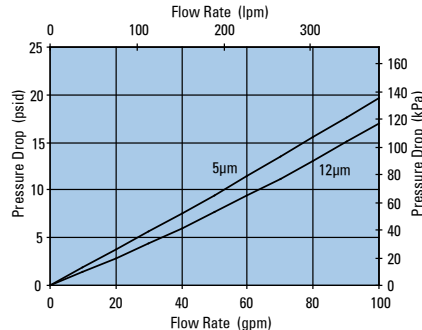
**W620 8" DX2 Filter Only**  
DX2-9600-8, 8.19"/208mm



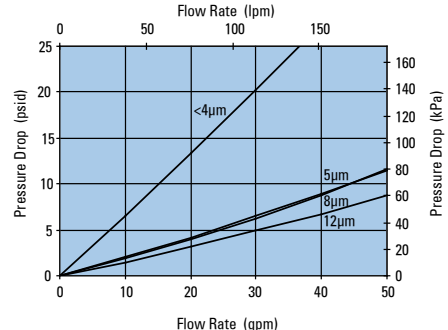
**W620 13" DT Filter Only**  
DT-9600-13, 12.91"/327.8mm



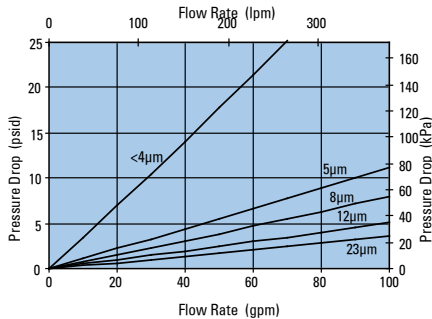
**W620 13" DT Filter Only**  
DT-9601-13, 12.85"/326.3mm



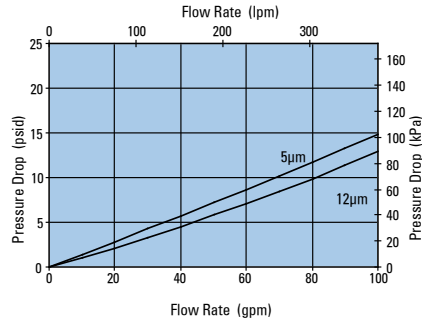
**W620 13" DX2 Filter Only**  
DX2-9600-13, 12.87"/327mm



**W620 16" DT Filter Only**  
DT-9600-16, 16.84"/427.8mm



**W620 16" DT Filter Only**  
DT-9601-16, 16.82"/427.1mm



**W620 16" DX2 Filter Only**  
DX2-9600-16, 16.81"/427mm

