



Tank Clean-out Covers

Model TC

MODEL		A	B	C	D	GASKET	"L" BOLT	ACCESS HOLE
TC-6	IN	6"	5"	0.4"	14 GA.	TCG-6		5"
	MM	152	127	10				
TC-10	IN	10"	8"	1.75"	7 GA.	TCG-10	1 1/4"	8"
	MM	254	203	44				
TC-12	IN	12"	10"	1.75"	7 GA.	TCG-12	1 3/4"	10"
	MM	305	254	44				
TC-14	IN	14"	12"	1.75"	7 GA.	TCG-14	1 3/4"	12"
	MM	356	305	44				
TC-16	IN	16"	14"	1.75"	7 GA.	TCG-16	2"	14"
	MM	406	356	44				
TC-18	IN	18"	16"	2"	7 GA.	TCG-18	2 1/2"	16"
	MM	457	406	51				

* TC-6 is black powder coated

Lip Gasket



TC-6



TC-12
With Lip Seal



TC-12D
With Lip Seal

Lenz has introduced a new series of tank covers, "TC Series". The tank covers include six models, ranging from a 6" to an 18" diameter. The TC Series tank covers are designed for ease of servicing hydraulic reservoirs through sidewall or through tank top.

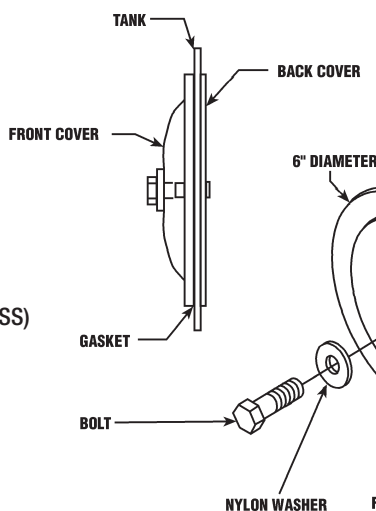
Features Include:

- Buna lip seal supplied 10, 12, 14, 16, 18
- Nylon crush washer supplied
- Zinc plated steel 10, 12, 14, 16, 18
- Durable no-leak gasket
- Quick easy access for cleaning and inspection
- For standard and fireproof hydraulic fluids

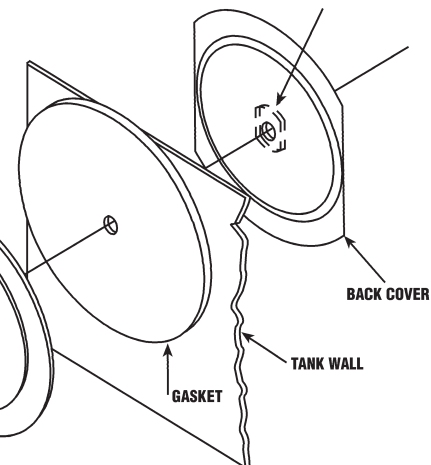
Options:

- 6", 10", 12", 14", 16", 18" Diameters
- Drain available – Add "D" to Model Number
- Stainless Steel – Add "SS" to Model Number (304SS)
- TC-BA – Tank cover Baffle Adapter
- TC Bolt – 5/8"-11 Bolt (TC-BX "L") Specify length.
- EPDM Gasket for Fireproof Hydraulic Fluids (TC-G-**-EPDM)

DETAIL ASSEMBLY



Installation Drawing of TC-6



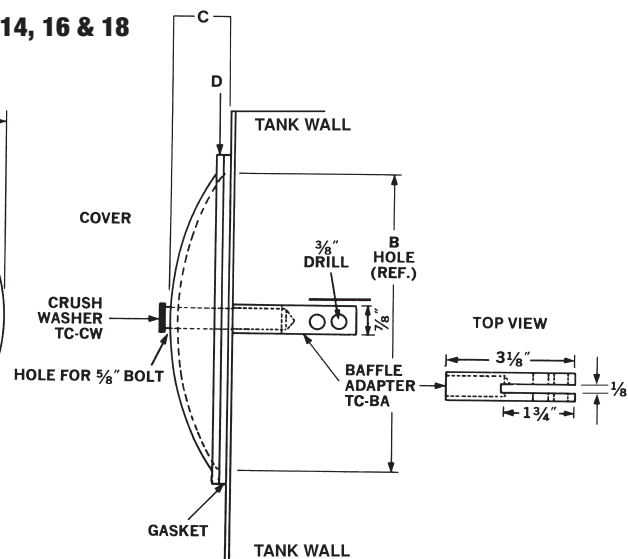
NOTE: THREADED TAB FACES INSIDE OF TANK

TC-6 Torque recommendations 5-7 ft lb.

Installation Drawing of TC Series 10, 12, 14, 16 & 18
(For use with Baffle)

See Lenz website for TCBR Bracket to Mount TC Covers in Tanks without Baffles

Maximum opening in tank should be 2" less than cover O.D.



TC-BA Baffle Adapter is not included as part of the model numbers below. Order separately.

TC-10-18 Torque recommendations 15 ft lb.