

# UNIVERSAL PULLERS

55 Ton & 100 TON



**Note:** Four cylinder extensions (not pictured) are included. The included lifting eyes (not pictured) permit use of an overhead crane to raise entire assembly.

## ENFORCER 55

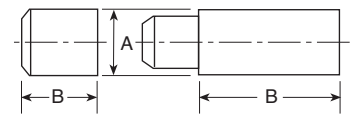
- 1** Hydraulic lift system for easy, precise position of puller.
- 2** Unique dual pump arrangement: Low pressure pump positions, holds and opens jaws. The high pressure pump advances and retracts the pushing cylinder without releasing clamped jaws.
- 3** Hydraulically-actuated jaws: Cylinder moves in or out to provide a safe, secure grip on workpiece.
- 4** Puller can be assembled in 2 or 3 jaw configurations.
- 5** Choice of cylinder with a 6 1/4" or 13 1/4" stroke.
- 6** Self-centering: Center cylinder on work; puller jaws will automatically grip work evenly.
- 7** Super Lock-Jaw™ feature means the harder the pull, the tighter the puller jaws grip. No chains or cages required to keep puller jaws from slipping or springing off the part being pulled.
- 8** Guards at pinch points protect operator.
- 9** Cart's swivel casters give ease of mobility.
- 10** Large wheels make movement of cart easy.
- 11** Puller can be mounted on cart 90 degrees to right or left of puller cart centerline, permitting use in tight quarters, such as between machinery.



**Conversion kit No. 251468** – Kit converts PH553C series to PH553CL series. Jaws are 12" longer. Kit contains three jaws and six straps with guards. Wt., 250 lbs.

### Pushing Adapters

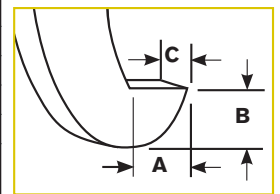
Order No.	A (in.)	B (in.)	Qty.*
<b>251002</b>	2 3/4	2 3/4	1
<b>350593†</b>	2 3/4	6	2
<b>350594</b>	2 3/4	3	1
<b>350637</b>	2 3/4	10	1



\*Number of adapters supplied with each Enforcer.  
†Only 1 for units with 13 1/4" stroke.

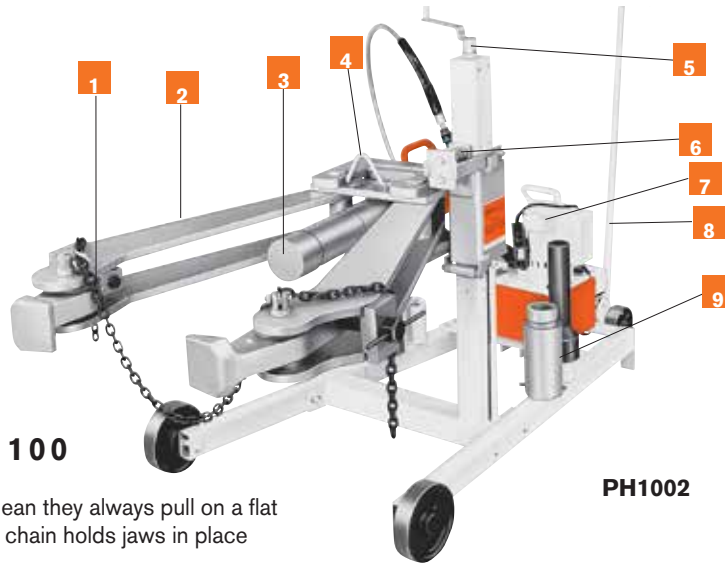
(251002 only)

Order No.	Min. Spread (in.)	Reach Min. Spread (in.)	Max. Spread (in.)	Reach Max. Spread (in.)	Overall Length* (in.)	Cyl. Stroke (in.)	Power Source Requirements	Prod. Wt. (lbs.)	Puller Jaw Tip Dimensions		
									A (in.)	B (in.)	C (in.)
<b>PH553C</b>	4	22	48	14	90	6 1/4	115 V, 60Hz, 25 Amp Cap.	749	7/8	1 1/4	1 7/8
<b>PH553C13</b>	4	15	48	7	90	13 1/4	115V, 60Hz, 25 Amp Cap.	776			
<b>PH553CL13</b>	2 1/2	25 5/8	45 1/4	22	102	13 1/4	115V, 60Hz, 25 Amp Cap.	836			
<b>PH553C-230</b>	4	22	48	14	90	6 1/4	230V, 50/60Hz, 15 Amp Cap.	749			
<b>PH553C13-230</b>	4	15	48	7	90	13 1/4	230V, 50/60Hz, 15 Amp Cap.	776			
<b>PH553CL-230</b>	2 1/2	32 5/8	45 1/4	29	102	6 1/4	230V, 50/60Hz, 15 Amp Cap.	809			
<b>PH553CL13-230</b>	2 1/2	25 5/8	45 1/4	22	102	13 1/4	230V, 50/60Hz, 15 Amp Cap.	836			



**Note:** See other pulling attachments on page 205

**Note:** Cart and Puller (cart width is 32")



## ENFORCER 100

- 1** Adjustable jaws mean they always pull on a flat surface. Retaining chain holds jaws in place during positioning.
- 2** Lock-Jaw™ feature means jaws grip progressively tighter as more pulling force is applied.
- 3** 100 ton hydraulic cylinder is single-acting, spring return type with a maximum working pressure of 10,000 psi.
- 4** Lifting bracket allows puller to be lifted if the workpiece center is more than 36" off the floor.
- 5** Adjusting screw allows operator to move vertical position of the puller.
- 6** Spring loaded feature means Enforcer 100 will align itself on uneven pulls.
- 7** Hydraulic pump is a 2-stage, high pressure unit controlled by remote hand switch with 25 foot cord.
- 8** Tow bar provides puller with plenty of mobility.
- 9** Pushing adapters have a diameter of 4 1/8" and 2 1/2".

**PH1002**

An ideal puller for steel mills, mines, oil fields, utility projects, paper mills, construction sites, railroads, airline shops, shipyards or anywhere else where large equipment and machinery pose tough maintenance challenges.

### "Enforcer 100" universal puller –

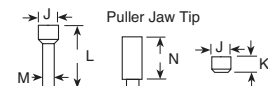
**No. PH1002** – 100 ton, 2-jaw universal hydraulic puller. Includes: 2-jaw Lock-Jaw™ puller, PE552S 2-speed electric/hydraulic power unit, C10010C 100 ton hydraulic cylinder with 10 1/4" stroke and six adapters. Wt., 890 lbs.

**No. PH1002J** – Same as PH1002, but without hydraulic power unit. Wt., 825 lbs.

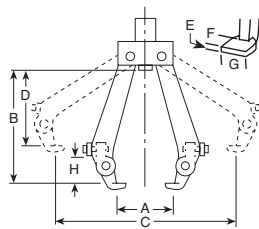
**PE552S** – Pump only. 1 1/8 hp, 115 volt, 50/60Hz, single phase, draws 25 amps at full load. Also available in 220 volt, 50Hz.

**Note:** For 220 volt, 50 Hz applications, order Part No. PH1002-220

### Ram extensions



Order No.	Adapter Type	Amount included w/puller	J (in.)	K (in.)	L (in.)	M (in.)	N (in.)
<b>44745</b>	Push	1	4 1/8	—	13 1/2	2 1/2	—
<b>44766</b>	Ext.	4	4 1/8	—	—	—	8
<b>303045</b>	Push	1	4 1/8	3 1/2	—	—	—



Order No.	Min. Spread A (in.)	Reach Min. Spread B (in.)	Max. Spread C (in.)	Reach Max. Spread D (in.)	Puller Jaw Tip E (in.)	F (in.)	G (in.)	Cylinder Height H (in.)	Vertical Stroke Adjust. (in.)	Overall Length (in.)	Max. Thickness Workpiece (in.)	Wheel Dia.	Power Source Requirements
<b>PH1002</b>	15	42	48	34	1	2 1/4	5	10 1/4	12-36	94	12	8	115v, 50/60Hz, 25 Amp Cap.
<b>PH1002J</b>	15	42	48	34	1	2 1/4	5	10 1/4	12-36	94	12	8	—

