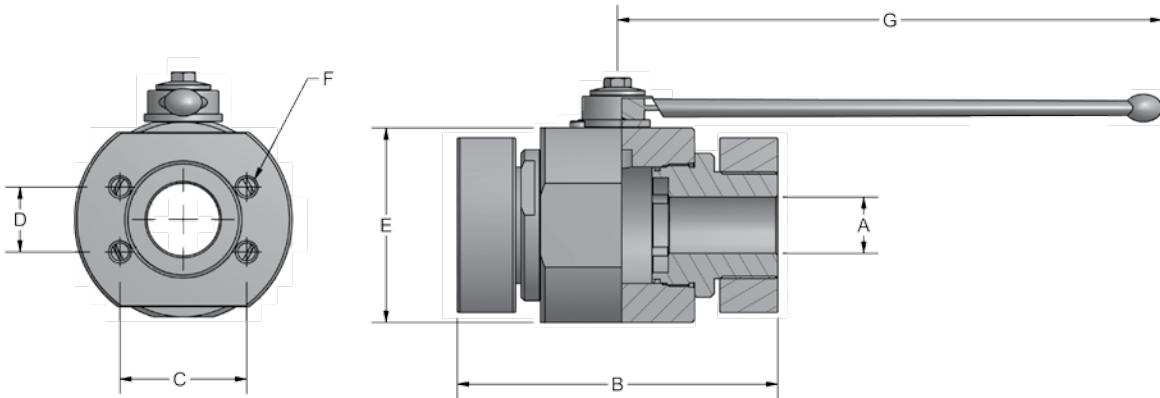


ABF Series - Two-Way Rounded Body Flat Face



- Carbon Steel with Zinc Chromate Plating (RoHS Compliant)
- 316 stainless steel available from stock
- POM seats & Buna O-rings standard on carbon steel valves
- Optional seal materials available for extreme temperature applications & fluid compatibility (Consult Factory)



Standard handle supplied is C92501Z-SW17. Refer to page 43 for details.

| ABF SERIES - CODE 61 | | | | | | | | | |
|----------------------|---------|--------|------|------|------|------|----------|-------|----------|
| SERIES | PSI MAX | A BORE | B | C | D | E | F UNC-2B | G | WEIGHT |
| ABF3#20 | 4000 | 1.26 | 6.77 | 2.31 | 1.19 | 3.66 | 7/16-14 | 11.81 | 17.9 LBS |
| ABF3#24 | 3000 | 1.57 | 6.95 | 2.75 | 1.41 | 4.21 | 1/2-13 | 11.81 | 24.6 LBS |
| ABF3#32 | 3000 | 1.89 | 7.72 | 3.06 | 1.69 | 4.49 | 1/2-13 | 11.81 | 33.8 LBS |

| ABF SERIES - CODE 62 | | | | | | | | | |
|----------------------|---------|--------|------|------|------|------|----------|-------|----------|
| SERIES | PSI MAX | A BORE | B | C | D | E | F UNC-2B | G | WEIGHT |
| ABF6#20 | 5000 | 1.26 | 6.77 | 2.63 | 1.25 | 3.66 | 1/2-13 | 11.81 | 17.9 LBS |
| ABF6#24 | 5000 | 1.57 | 6.95 | 3.13 | 1.44 | 4.21 | 5/8-11 | 11.81 | 24.6 LBS |
| ABF6#32 | 5000 | 1.89 | 7.72 | 3.81 | 1.75 | 4.49 | 3/4-10 | 11.81 | 33.8 LBS |



ABF Series - Two-Way Rounded Body Flat Face

Model Code Breakdown

ABF3 #32 - 1 1 D B _

VALVE SERIES

| | |
|------|---------|
| ABF3 | Code 61 |
| ABF6 | Code 62 |

CONNECTION SIZE

BODY & ADAPTER MATERIAL

| | |
|---|---------------------|
| 1 | Carbon Steel |
| 2 | 316 Stainless Steel |

BALL & STEM MATERIAL

| | |
|---|---------------------|
| 1 | Carbon Steel |
| 2 | 316 Stainless Steel |

**LOCKING KIT OR
OPTIONAL HANDLE CODE**
(See pages 42 & 43)

ADAPTER & STEM SEALS

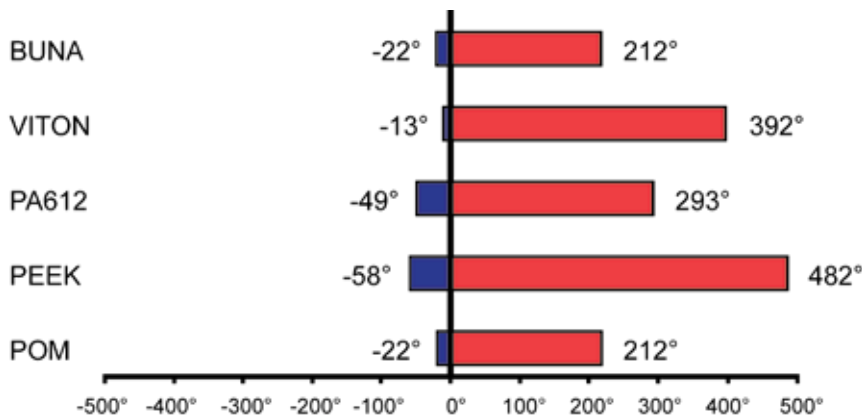
| | |
|---|--------------------|
| B | Buna- Standard |
| V | Viton (Std on S/S) |

BALL & STEM SEATS

| | |
|---|---------------|
| D | POM- Standard |
| P | PEEK |
| N | PA612 |

Please consult your system's seal manufacturer for recommendation of seal selection, as Anchor Fluid Power does not accept responsibility for seal selection.

MAXIMUM & MINIMUM WORKING TEMPERATURES FOR SEAL MATERIALS



All temperatures are in degrees Fahrenheit.