

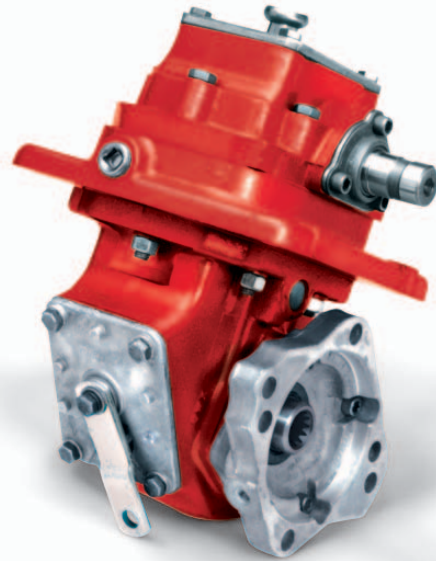
Chelsea® 2442 Series

Two Gear Gearbox for Engine Driven Applications



Overview:

The Chelsea 2442 P.T.O. is another example of why Chelsea P.T.O. technology is the best in the business. This front mounted gear box is comprised of the rugged Chelsea 442 and 100 Series P.T.O.s. This unit is designed to operate from the crankshaft of the engine. This economical workhorse features a cast iron housing and tapered cone bearing on the output shaft, giving it a high torque rating and long service life. The space saving air shift cover provides maximum clearance under the truck. The 2442 has strong tapered bearings instead of needle bearings for greater load bearing capability. Twenty-nine output options including Chelsea's popular 360° rotatable flange, seven internal speed ratios and ten shift options make this one versatile gearbox. Take advantage of over 65 years of Chelsea P.T.O. technology to increase performance and lower costs.



- Snow & Ice Removal
- Spreaders
- Refuse

Contact Information:

Parker Hannifin Corporation
Chelsea Products Division
8225 Hacks Cross Road
Olive Branch, MS 38654 USA

Phone: 1-888-PH4-TRUK
(1-888-744-8785)

Fax: 1-662-895-1069
chelseacustserv@parker.com

www.parker.com/chelsea

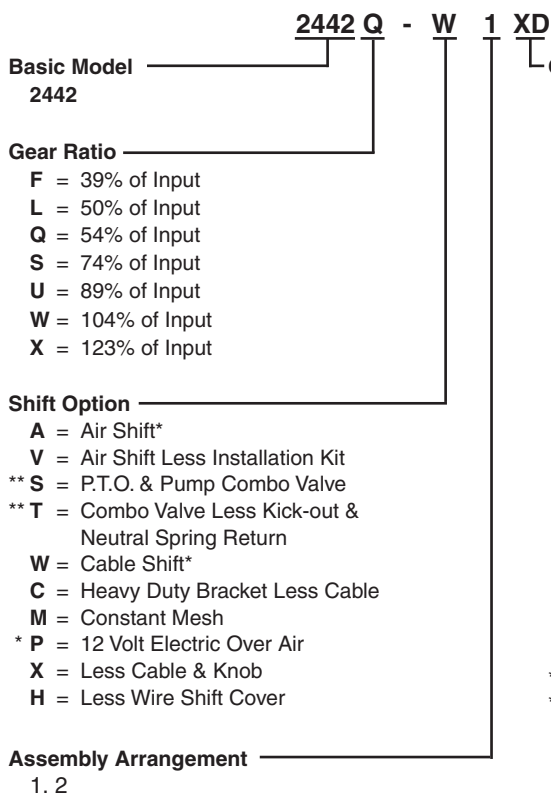
Product Features and Benefits:

- The economical 2442 Series is a manual shift P.T.O.
- Operator must stop the engine before shifting
- Available in 7 different speed ratios ranging from 39% to 123% of engine speed
- 10 shift options available
- 29 output options
- Two Year Warranty



ENGINEERING YOUR SUCCESS.

Model Number Designator



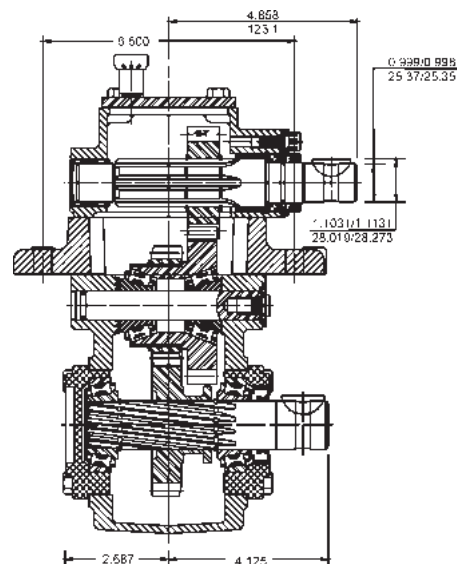
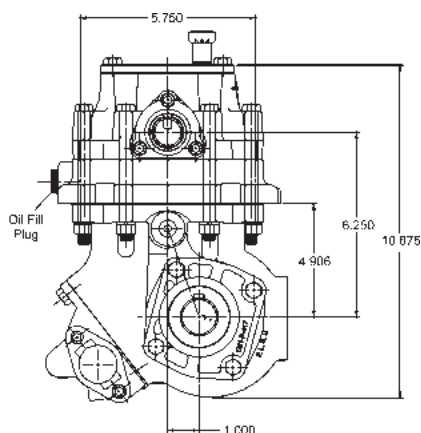
Output Designation

XD = 1-1/4" Rd Standard Shaft
XE = S.A.E. "A" 2 or 4-Bolt 5/8" - 9T
XG = S.A.E. "A" 2-Bolt 3/4" Rd
XJ = S.A.E. "A" 2-Bolt 3/4" Rd
XK = S.A.E. "B" 2 or 4-Bolt 7/8" - 13T
XQ = S.A.E. "B" 2 or 4-Bolt 7/8" - 13T
XR = Chelsea Special 7/8" - 13T
XX = Tapered Output Shaft
XY = DIN 5462 8T
AK = S.A.E. "B" 2-Bolt 7/8" - 13T
AF = S.A.E. "BB" 2 or 4-Bolt 1" - 15T
AZ = S.A.E. "B" 4-Bolt 1-1/4" - 14T
RA = Rotatable S.A.E. "B" 2-Bolt 7/8" - 13T
RB = Rotatable S.A.E. "B" 4-Bolt 7/8" - 13T
RC = Rotatable S.A.E. "A" 2-Bolt 5/8" - 9T
RD = Rotatable S.A.E. "A" 2-Bolt 7/8" - 13T
RE = Rotatable S.A.E. "BB" 4-Bolt 1" - 15T

* Includes mounting parts

** Includes installation kit, console sold separately

RF = Rotatable S.A.E. "BB" 2-Bolt 1" - 15T
RY = Rotatable DIN 5462 8T
GA = Greaseable Rotatable "B" 2-Bolt 7/8" - 13T
GB = Greaseable Rotatable "B" 4-Bolt 7/8" - 13T
GF = Greaseable S.A.E. "BB" 2 or 4-Bolt 1" - 15T
GH = Greaseable Rot. S.A.E. "BB" 2-Bolt 1" - 15T
GK = Greaseable S.A.E. "B" 2 or 4-Bolt 7/8" - 13T
GP = Greaseable S.A.E. "B" 2 or 4-Bolt 7/8" - 13T
GQ = Greaseable S.A.E. "B" 2 or 4-Bolt 7/8" - 13T
GR = Greaseable Chelsea Special 7/8" - 13T
GY = Greaseable DIN 5462 8T
GZ = Greaseable S.A.E. "B" 4-Bolt 1-1/4" - 14T



Series Specifications Chart – Crankshaft-Driven P.T.O.s

	2442*F	2442*L	2442*Q	2442*S	2442*U	2442*W	2442*X
Percent of Engine Speed	39%	50%	54%	74%	89%	104%	123%
Standard Output Shaft Size	1-1/4" Round w/key						
Intermittent Torque Rating (Lbs. ft.)	250	250	225	170	140	120	100
Intermittent Torque Rating (N.m.)	339	339	305	230	190	163	136
Horsepower Rating for Intermittent Service							
At 500 R.P.M. of Output Shaft (HP)	24	24	21	16	13	11	10
At 1000 R.P.M. of Output Shaft (HP)	48	48	43	32	27	23	19
At 500 R.P.M. of Output Shaft (Kw)	18	18	16	12	10	9	7
At 1000 R.P.M. of Output Shaft (Kw)	36	36	32	24	20	17	14
Approximate Weight:	69 lbs. [31 kg]						