

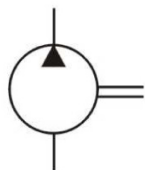
## SINGLE FIXED DISPLACEMENT 25V SERIES



### FEATURES

The Northman 25V Series pump is a fixed displacement, hydraulic balanced vane pump. This high performance intravane pump for industrial applications features high pressure capability with 12 vanes for low noise. The available flow ratings for the 25V series are from 10 GPM to 21 GPM at 1200 RPM. Viton seals are standard. Standard rotation is right-hand (clockwise), with left-hand rotation (counterclockwise) available ("L" option). The flange mounting is the SAE "B" two-bolt standard. The outlet port may be oriented in any one of four positions.

### SYMBOL



### MODEL CODE

**25** **V** - **14** - **A** - **1** - **C** - **\*\*** - **(L)**

1

2

3

4

5

6

7

8

#### 1 Series

25: 25 Series Fixed Vane Pump

#### 2 Design Type

V: Industrial Design

#### 3 GPM

Flow at 1200 RPM, 100 PSI:  
10, 12, 14, 17, 21

#### 4 Ports

A: Inlet - 1.5" SAE, 4-Bolt Flange  
Outlet - 1" SAE, 4-Bolt Flange

#### 5 Shaft

1: 7/8" Dia., 0.187 Sq. St. Key  
11: 13 Tooth Spline  
86: 1" Dia., 0.250 Sq. St. Key

#### 6 Position of Outlet Port (Viewed from Cover End)

A: Opposite Inlet  
B: 90° CCW from Inlet  
C: Inline with Inlet  
D: 90° CW from Inlet

#### 7 Design Number

#### 8 Shaft Rotation

(Viewed from Shaft End)  
No Code: Right Hand (CW)  
L: Left Hand (CCW)

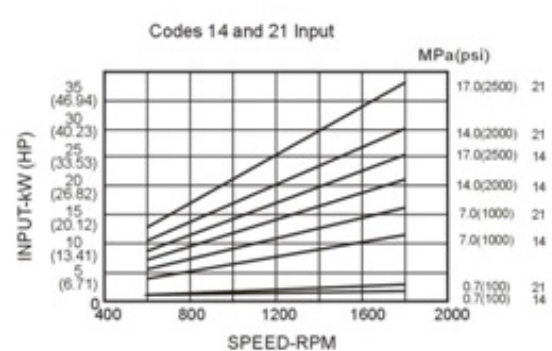
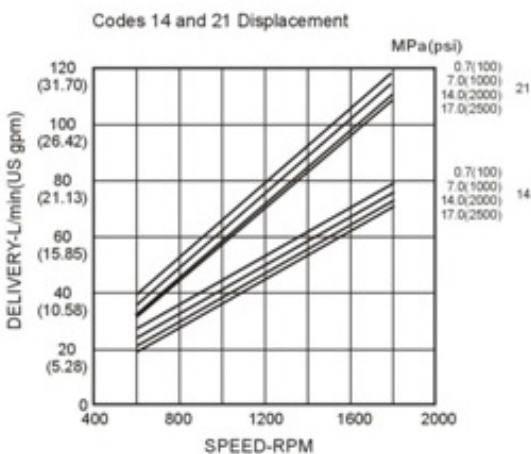
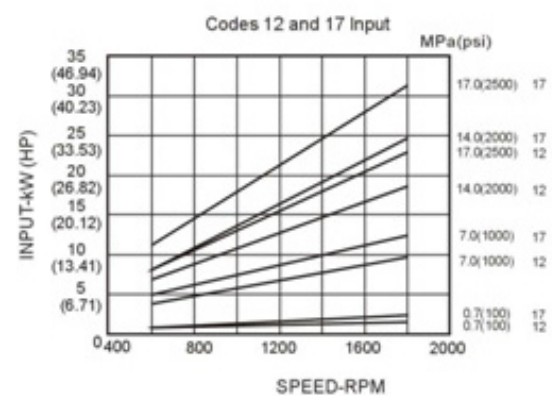
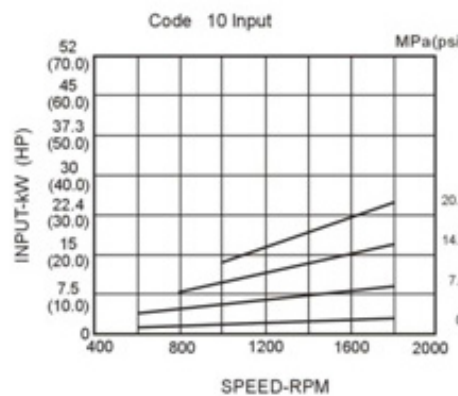
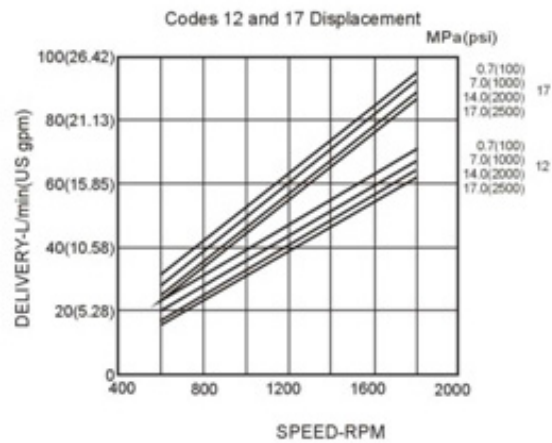
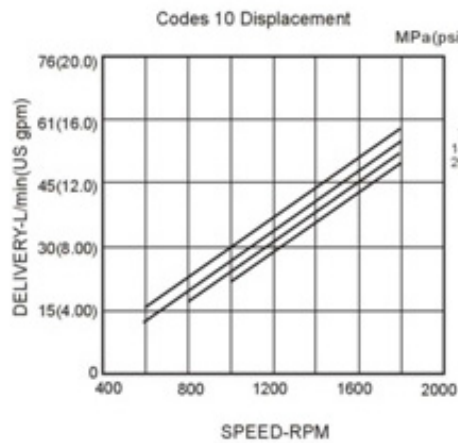
# SINGLE FIXED DISPLACEMENT 25V SERIES

## PERFORMANCE CURVES

25V Single Pump (Ring Size -12 & 17 GPM)

SAE 10W Fluid at 120°F.

Pump Inlet at 0" hg.



# SINGLE FIXED DISPLACEMENT

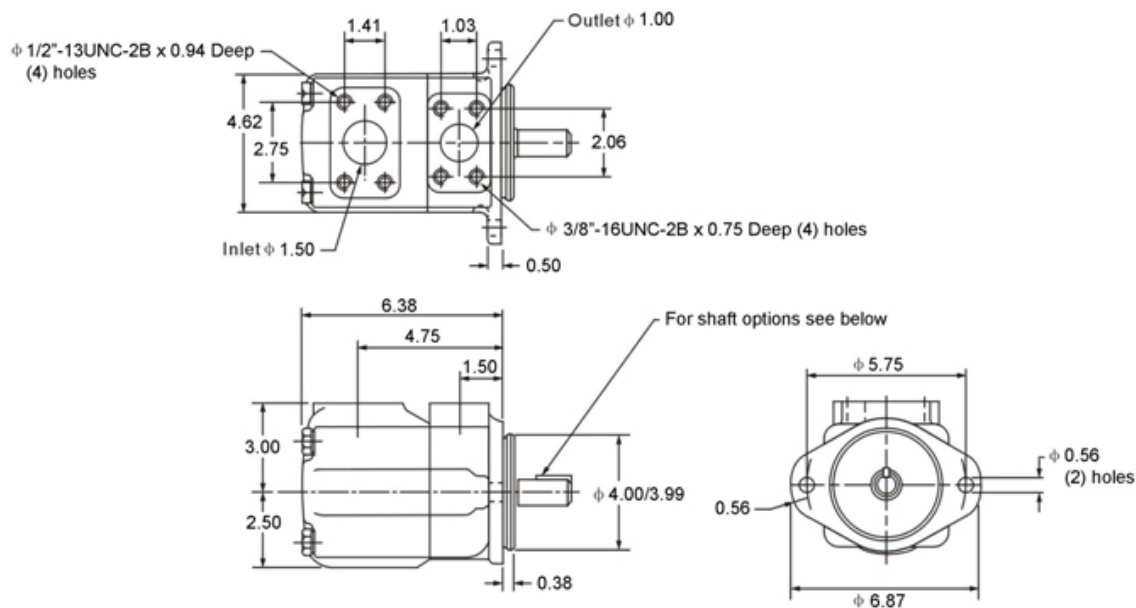
## 25V SERIES

### SPECIFICATIONS

Based on Petroleum Oil: 120°F (49°C), Viscosity 150 SUS at 100°F (38°C), 0 Inlet PSI					
Model	Flow Code GPM @ 1200 RPM & 100 PSI	Displacement in <sup>3</sup> /r (cm <sup>3</sup> /r)	Max. Speed RPM	Max. Pressure PSI (BAR)	Weight Lbs (Kg)
25V	10	1.98 (32.5)	1800	2500 (172)	32.0 (14.5)
	12	2.44 (40)			
	14	2.62 (43)			
	17	3.36 (55)			
	21	4.09 (67)			

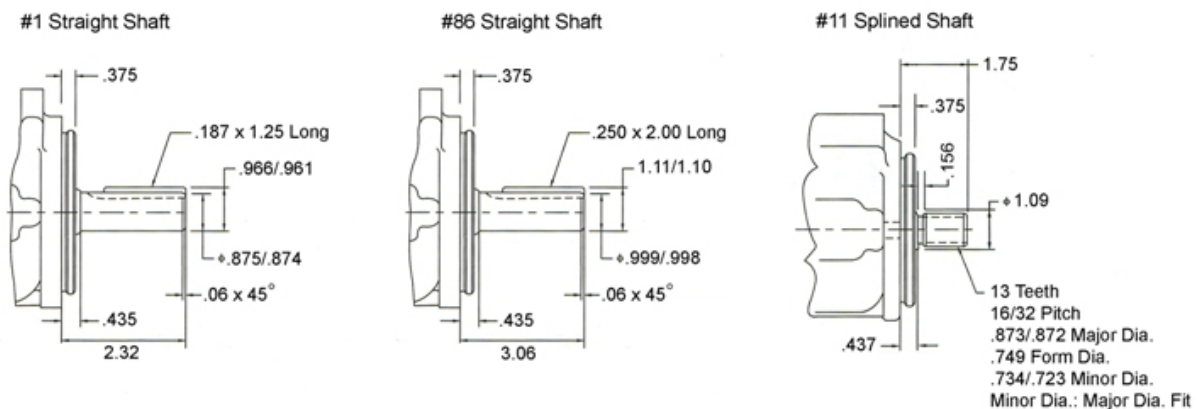
### DIMENSIONS

#### 25V Single Pump - Dimensions in Inches



#### 25V Shafts

Dimensions in inches



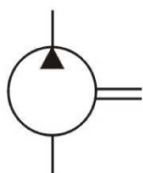
## SINGLE FIXED DISPLACEMENT 25VQ SERIES



### FEATURES

The Northman 25VQ Series pump is a fixed displacement, hydraulic balanced vane pump. This high performance intravane pump features the 10 vane design for the high pressure and speed requirements of mobile applications. The available flow ratings for the 25VQ series are from 10 GPM to 21 GPM at 1200 RPM. Viton seals are standard. Standard rotation is right-hand (clockwise), with left-hand rotation (counterclockwise) available ("L" option). The flange mounting is the SAE "B" two-bolt standard. The outlet port may be oriented in any one of four positions.

### SYMBOL



### MODEL CODE

**25 VQ - 14 - A - 1 - C - \*\* - (L)**

**1 2 3 4 5 6 7 8**

<b>1 Series</b> 25: 25 Series Fixed Vane Pump	<b>5 Shaft</b> 1: 7/8" Dia., 0.187 Sq. St. Key 11: 13 Tooth Spline 86: 1" Dia., 0.250 Sq. St. Key	<b>7 Design Number</b>
<b>2 Design Type</b> VQ: Mobile Design	<b>6 Position of Outlet Port</b> (Viewed from Cover End) A: Opposite Inlet B: 90° CCW from Inlet C: Inline with Inlet D: 90° CW from Inlet	<b>8 Shaft Rotation</b> (Viewed from Shaft End) No Code: Right Hand (CW) L: Left Hand (CCW)
<b>3 GPM</b> Flow at 1200 RPM, 100 PSI: 10, 12, 14, 17, 21		
<b>4 Ports</b> A: Inlet - 1.5" SAE, 4-Bolt Flange Outlet - 1" SAE, 4-Bolt Flange		

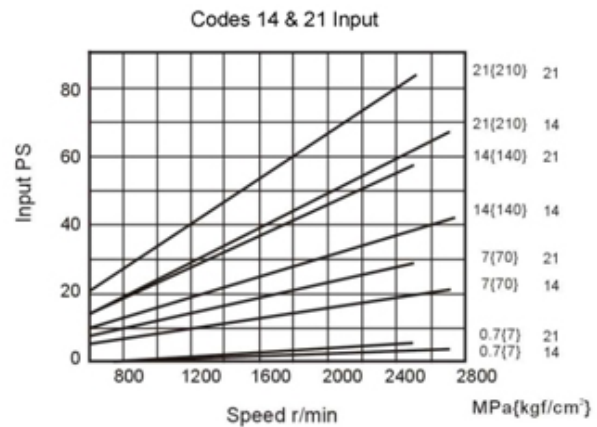
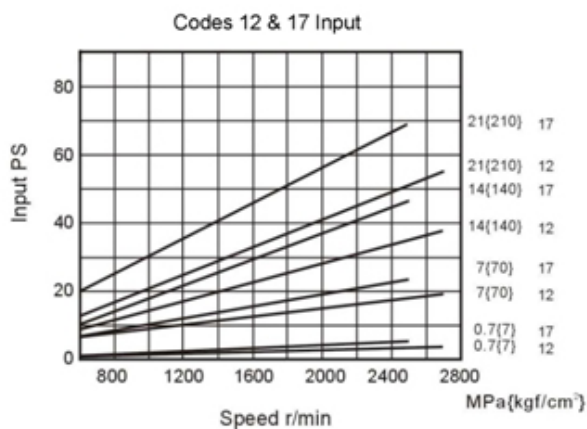
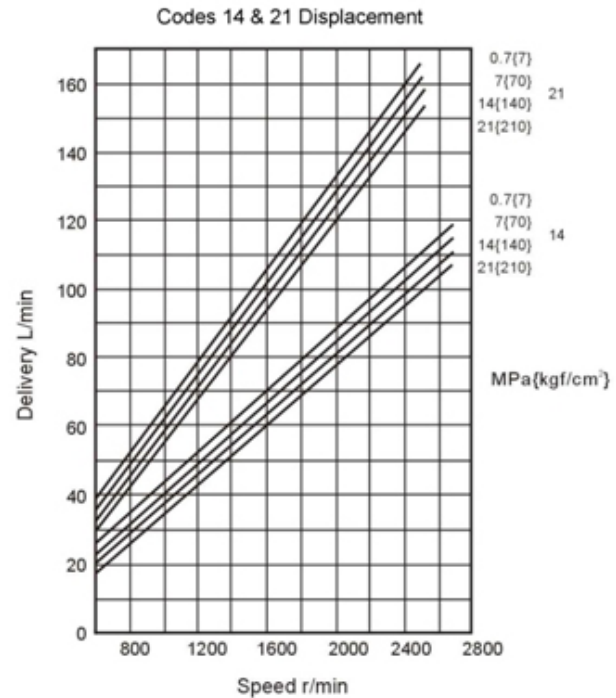
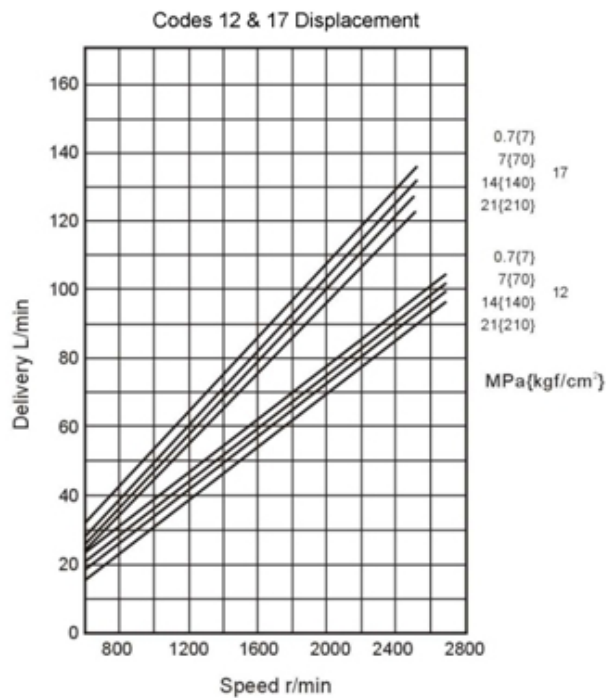
# SINGLE FIXED DISPLACEMENT 25VQ SERIES

## PERFORMANCE CURVES

25VQ Single Pump

SAE 10W Fluid at 120°F.

Pump Inlet at 0" hg.



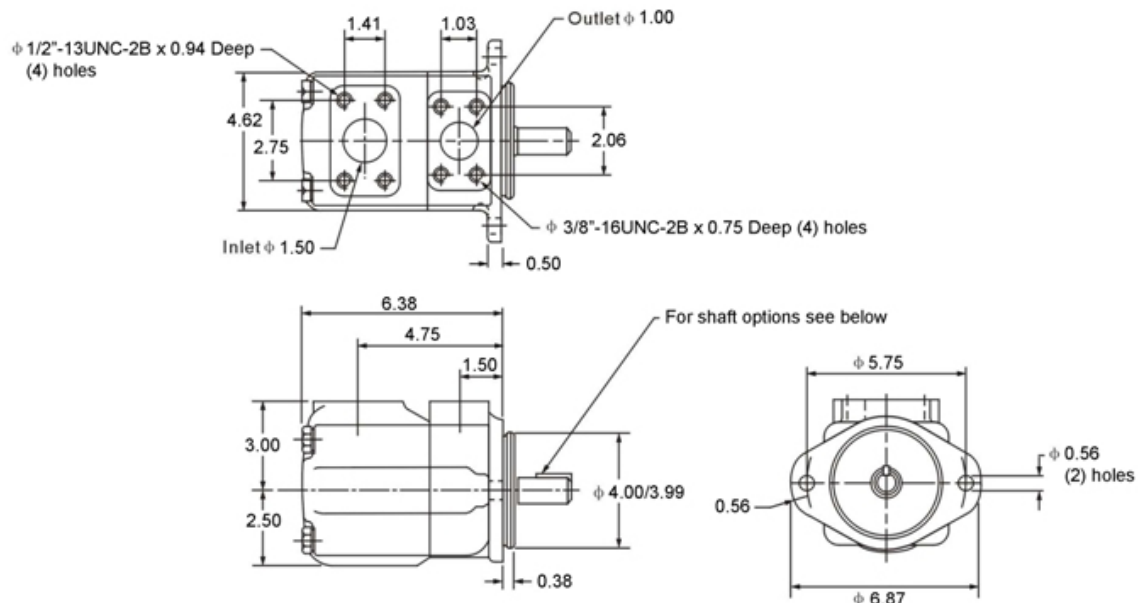
# SINGLE FIXED DISPLACEMENT 25VQ SERIES

## SPECIFICATIONS

Based on Petroleum Oil: 120°F (49°C), Viscosity 150 SUS at 100°F (38°C), 0 Inlet PSI					
Model	Flow Code GPM @ 1200 RPM & 100 PSI	Displacement in³/r (cm³/r)	Max. Speed RPM	Max. Pressure PSI (BAR)	Weight Lbs (Kg)
25VQ	10	1.98 (32.5)	2700	3000 (210)	32.0 (14.5)
	12	2.34 (38.3)			
	14	2.64 (43.3)			
	17	3.20 (52.5)	2500		
	21	3.97 (65.0)			

## DIMENSIONS

### 25VQ Single Pump - Dimensions in Inches



### 25VQ Shafts Dimensions in inches

