



Sump Strainers

49 / N49

49-SERIES

Plated Steel Hex, Nylon Hex, Aluminum Hex Pipe Nut Coupling:
In a full range of NPT sizes, 3/4" thru 3". Welded on.

Steel Support Tube:
Provides rigidity, permits easy cleaning and better flow.

Pleated, Reusable Stainless Wire Cloth:
Keeps its shape and allows better flow. For use with hydraulic fluids, oils, coolants, cutting oils and lubricants. Excellent for mobile equipment. Easily cleaned. Choice of 30, 60, 100 or 200 mesh. See table.

Plated Steel Cap End:
Epoxy-bonded for one-piece construction.

Trouble-Free Positive Protection:
All metal, nickel plated construction. No organic elements to deteriorate. These smooth, one-piece, epoxy-bonded units are carefully and compactly constructed with quality materials throughout. They assure trouble-free, positive protection for the entire system. Excellent for mobile equipment.

Easily Installed and Cleaned:
Easily removed and cleaned with gasoline and similar solvents.

OPTIONAL:
Nylon hex pipe nut coupling, one piece.
Aluminum hex pipe nut coupling (Consult Factory) made to order.

Bypass Valves
3 P.S.I./ 6" HG
5 P.S.I./ 10" HG

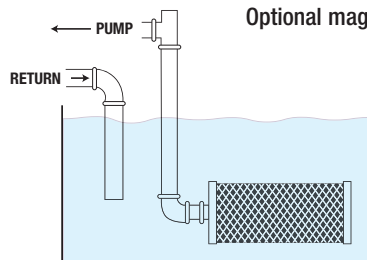
Operating Temperature
15F° (-9 C) to 212 F° (100C)

Magnetic Bands
Optional magnets are available

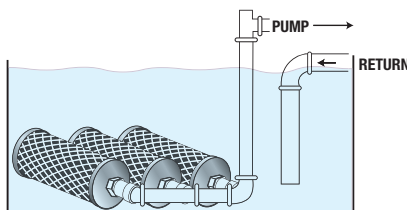
Steel Hex

N49-SERIES
Nylon Hex Nut

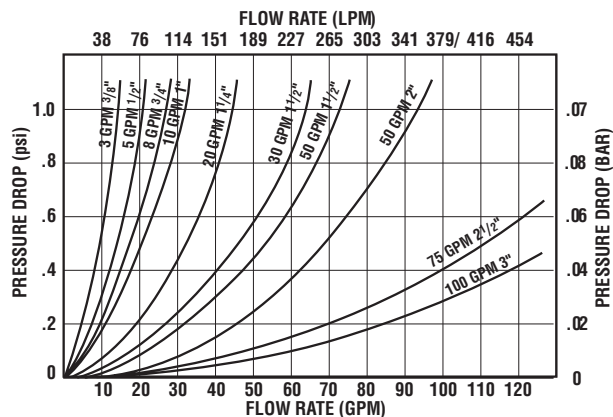
OPTIONAL
Built-in relief valve to prevent pump starvation
Add R3 or R5



Typical Single Unit Installation



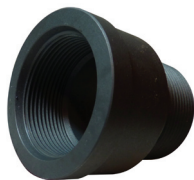
Typical Multiple Unit Installation



Temperature 100°F Viscosity 150SUS
Average Pressure drop through clean assembly with 150 SUS oil at 100F

Rated Flow Capacity Under 1" HG (1.5 P.S.I.) Pressure Drop @ 5ft./sec

AN-WM Weld Adapter
See page 36a





Ordering Code

49 — 20 — R3 — 100 — MAG

SERIES
49
N49

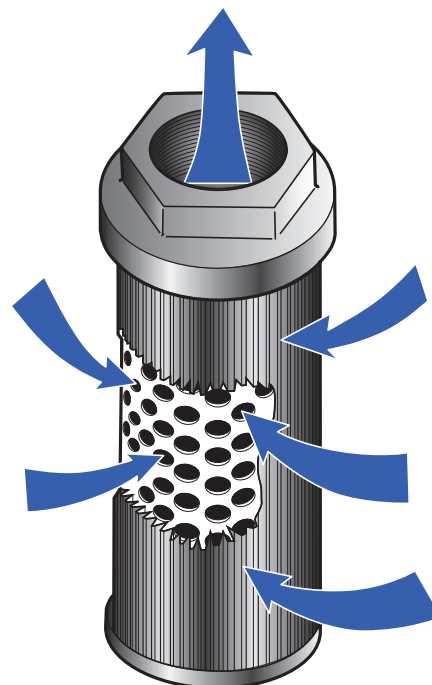
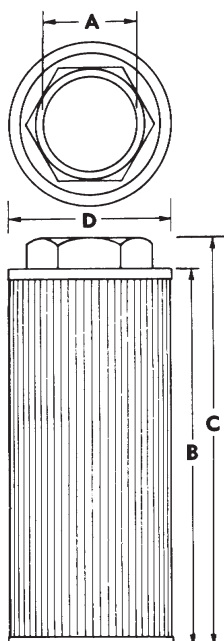
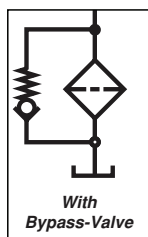
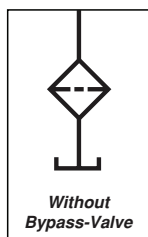
FLOW	SIZE
3	3/8" NPT
4	1/2" NPT
5	3/4" NPT
10	1" NPT
20	1 1/4" NPT
30	1 1/2" NPT
50	1 1/2" NPT
50	2" NPT
75	2 1/2" NPT
100	3" NPT
*200	3" NPT
*300	4" NPT
*400	4" NPT
*600	6" NPT

BYPASS	
OMIT	NO BYPASS
R3	3 PSI BYPASS
R5	5 PSI BYPASS

MESH	
100	100 MESH (STANDARD)
30	30 MESH
60	60 MESH
200	200 MESH

OPTIONS	
OMIT	
MAG	MAGNETS

*Not available nylon aluminum nuts



Dimensional Details

MODEL STEEL	MODEL NYLON	FLOW		A	B	C	D	AREA IN ² (CM ₂)
49-3	N49-3	3 GPM 11 LPM	IN MM	3/8"	1.2 30.4	2.5 63.5	1.9 48.3	34 (219.3)
49-4	N49-4	5 GPM 20 LPM	IN MM	1/2"	1.9 48.2	3.1 78.7	2.6 66	62 (399.9)
49-5	N49-5	8 GPM 30 LPM	IN MM	3/4"	2.9 73.7	3.6 91.4	2.6 66	88 (567)
49-10	N49-10	10 GPM 40 LPM	IN MM	1"	4.6 116.8	5.4 137.2	2.6 66	110 709.5)
49-20	N49-20	20 GPM 80 LPM	IN MM	1 1/4"	6.1 154.9	6.9 175.3	3 76.2	162 (1044.9)
49-30	N49-30	30 GPM 120 LPM	IN MM	1 1/2"	7.2 182.9	8 203.2	3.3 83.8	225 (1451.3)
49-50	N49-50	50 GPM 200 LPM	IN MM	1 1/2"	9.1 231.1	9.9 251.5	3.9 99.1	340 (2193)
49-50-2	N49-50-2	50 GPM 200 LPM	IN MM	2"	9.1 231.1	9.9 251.5	3.9 99.1	340 (2193)
49-75	N49-75	75 GPM 285 LPM	IN MM	2 1/2"	9.1 231.1	10.1 256.5	5.1 129.5	400 (2580)
49-100	N49-100	100 GPM 380 LPM	IN MM	3"	10.4 264.2	11.8 299.7	5.1 129.5	500 (3225)
49-200	N/A	200 GPM 800 LPM	IN MM	4"	8.6 220	11.6 295	7.9 200	965 (6225)
49-300	N/A	300 GPM 1200 LPM	IN MM	4"	12 306	15 381	7.9 200	1370 (8840)
49-400	N/A	400 GPM 1600 LPM	IN MM	4"	15.2 387	18.2 462	7.9 200	1740 (11,225)
49-600	N/A	600 GPM 2400 LPM	IN MM	4"	13.4 340	24.2 615	7.9 200	2430 (15,675)

Pressure drop will be < 2 PSI