

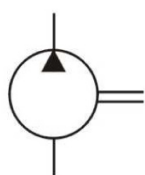
DOUBLE FIXED DISPLACEMENT 3525V SERIES

FEATURES

The Northman 3525V Series double pump is a fixed displacement, hydraulic balanced vane pump. This high performance intravane pump for industrial applications features high pressure capability with 12 vanes for low noise. The available flow ratings for the 3525V series are from 21 GPM to 38 GPM at 1200 RPM on the shaft end and from 10 to 21 GPM at 1200 RPM on the cover end. Viton seals are standard. Standard rotation is right-hand (clockwise), with left-hand rotation (counterclockwise) available ("L" option). The flange mounting is the SAE "C" two-bolt standard. The outlet port may be oriented in any one of four positions.



SYMBOL



MODEL CODE

3525 **V** - **25** - **A** - **14** - **1** - **CC** - ****** - **(L)**

1
2
3
4
5
6
7
8
9

1 Series

3525: 3525V Fixed
Double Pump

2 Design Type

V: Industrial Design

3 Shaft End Pump

Flow at 1200 RPM, 100 PSI:
21, 25, 30, 35, 38

4 Ports

A: Inlet - 3" SAE, 4-Bolt Flange
Shaft End Outlet -
1.25" SAE, 4-Bolt Flange
Cover End Outlet -
1" SAE, 4-Bolt Flange

5 Cover End Pump

Flow at 1200 RPM, 100 PSI:
10, 12, 14, 17, 21

6 Shaft

1: 1-1/4" Dia., 0.312 Sq. St. Key
11: 14 Tooth Spline
86: 1-3/8" Dia., 0.312 Sq. St. Key

7 Port Orientation

(Viewed from Cover End)

With No. 1 Outlet Opposite Inlet

AA - No. 2 Outlet 135° CCW from Inlet
AB - No. 2 Outlet 45° CCW from Inlet
AC - No. 2 Outlet 45° CW from Inlet
AD - No. 2 Outlet 135° CW from Inlet

With No. 1 Outlet 90° CCW from Inlet

BA - No. 2 Outlet 135° CCW from Inlet
BB - No. 2 Outlet 45° CCW from Inlet
BC - No. 2 Outlet 45° CW from Inlet
BD - No. 2 Outlet 135° CW from Inlet

7 Port Orientation (Cont.)

(Viewed from Cover End)

With No. 1 Outlet Inline with Inlet

CA - No. 2 Outlet 135° CCW from Inlet
CB - No. 2 Outlet 45° CCW from Inlet
CC - No. 2 Outlet 45° CW from Inlet
CD - No. 2 Outlet 135° CW from Inlet

With No. 1 Outlet 90° CW FROM Inlet

DA - No. 2 Outlet 135° CCW from Inlet
DB - No. 2 Outlet 45° CCW from Inlet
DC - No. 2 Outlet 45° CW from Inlet
DD - No. 2 Outlet 135° CW from Inlet

8 Design Number

9 Shaft Rotation

(Viewed from Shaft End)

No Code: Right Hand (CW)

L: Left Hand (CCW)

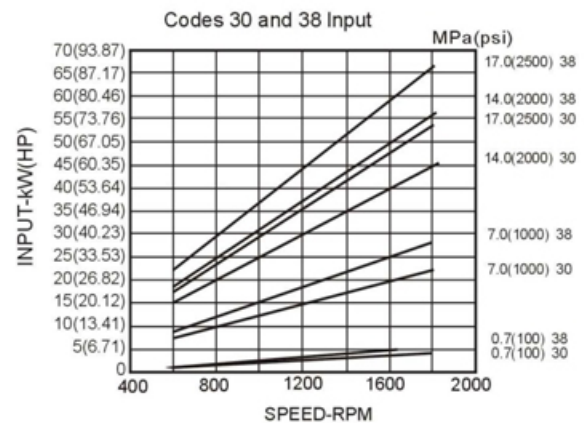
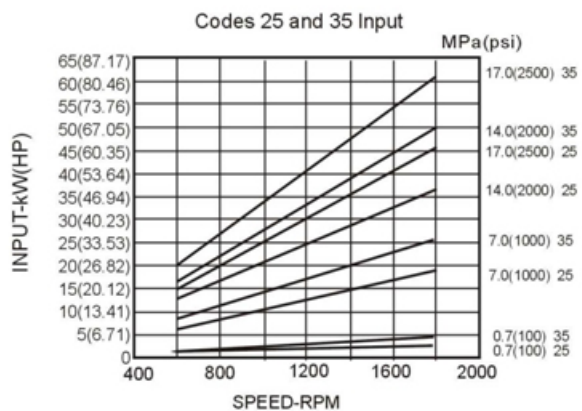
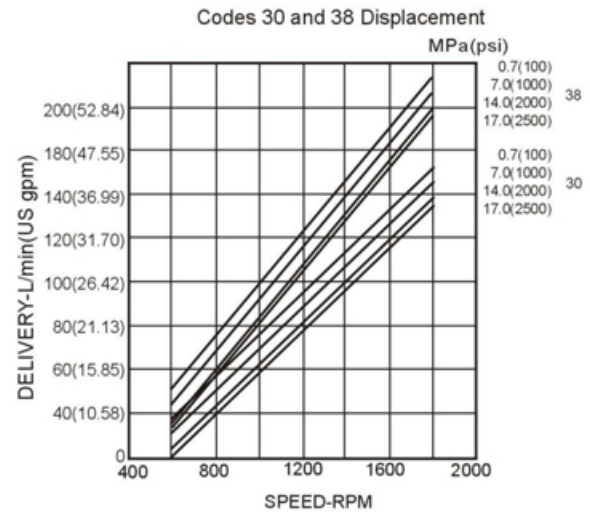
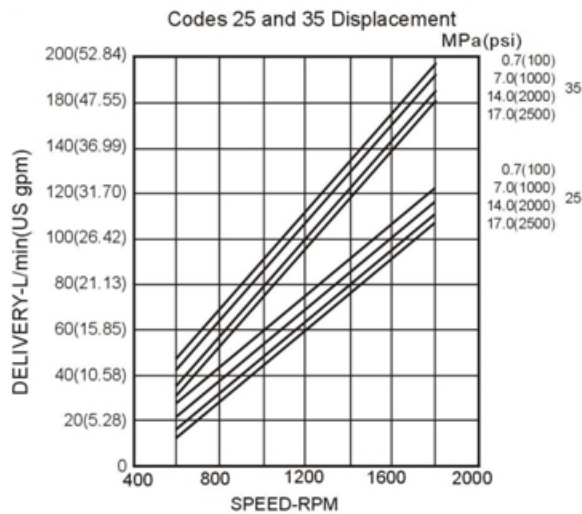
DOUBLE FIXED DISPLACEMENT 3525V SERIES

PERFORMANCE CURVES

3525V Double Pump

SAE 10W Fluid at 120°F.

Pump Inlet at 0" hg.



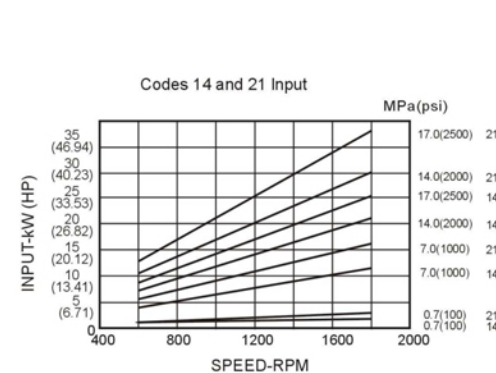
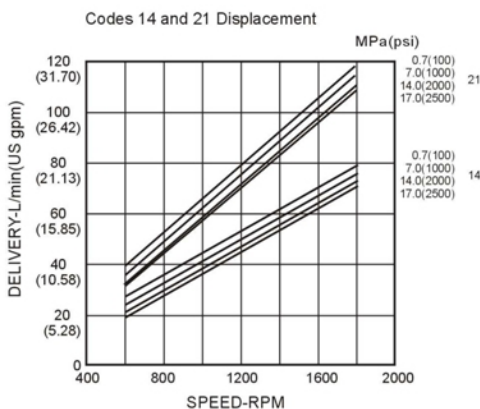
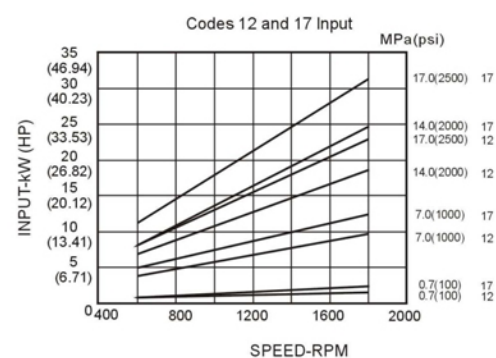
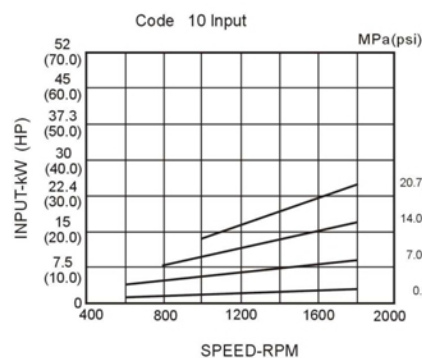
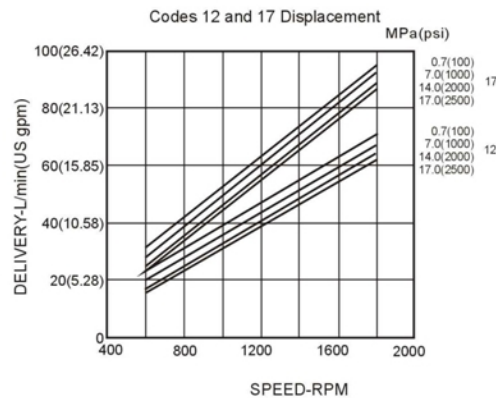
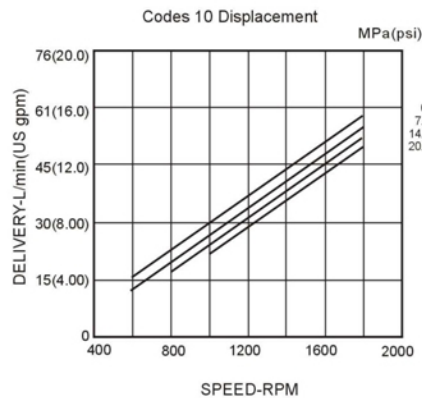
DOUBLE FIXED DISPLACEMENT 3525V SERIES

PERFORMANCE CURVES

3525V Double Pump

SAE 10W Fluid at 120°F.

Pump Inlet at 0" hg.



DOUBLE FIXED DISPLACEMENT 3525V SERIES

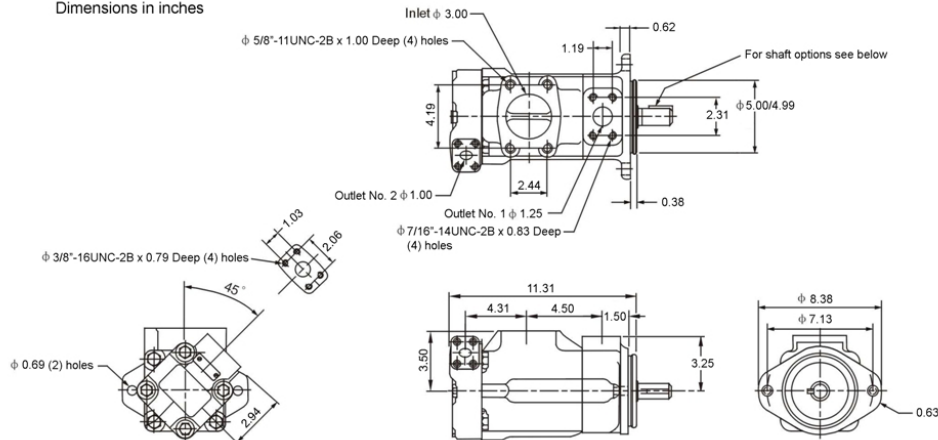
SPECIFICATIONS

Shaft End Pump	Flow Code GPM @ 1200 RPM & 100 PSI	Displacement in ³ /r (cm ³ /r)	Max. Pressure PSI (BAR)
P/N Example 3525V- <u>30</u> -A-12-1-CC-20 ("30" = Shaft End Pump)	21	4.09 (67)	2500 (172)
	25	4.94 (81)	
	30	5.92 (97)	
	35	6.83 (112)	
	38	7.38 (121)	
Cover End Pump	Flow Code GPM @ 1200 RPM & 100 PSI	Displacement in ³ /r (cm ³ /r)	Max. Pressure PSI (BAR)
P/N Example 3525V-30-A- <u>12</u> -1-CC-20 ("12" = Cover End Pump)	10	1.98 (32.5)	2500 (172)
	12	2.44 (40)	
	14	2.62 (43)	
	17	3.36 (55)	
	21	4.09 (67)	

DIMENSIONS

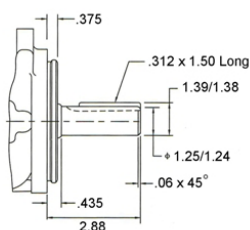
3525V Double Pump - Dimensions in Inches

3525V Dimensions
Dimensions in inches

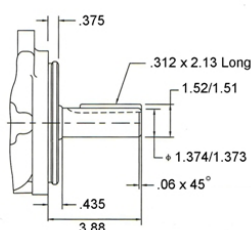


3525V Shafts
Dimensions in inches

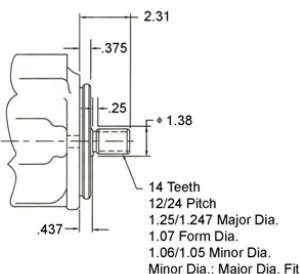
#1 Straight Shaft



#86 Straight Shaft



#11 Splined Shaft



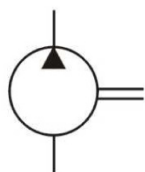
DOUBLE FIXED DISPLACEMENT 3525VQ SERIES

FEATURES

The Northman 3525VQ Series double pump is a fixed displacement, hydraulic balanced vane pump. This high performance intravane pump features the 10 vane design for the high pressure and speed requirements of mobile applications. The available flow ratings for the 3525VQ series are from 21 GPM to 38 GPM at 1200 RPM on the shaft end and from 10 to 21 GPM at 1200 RPM on the cover end. Viton seals are standard. Standard rotation is right-hand (clockwise), with left-hand rotation (counterclockwise) available ("L" option). The flange mounting is the SAE "C" two-bolt standard. The outlet port may be oriented in any one of four positions.



SYMBOL



MODEL CODE

3525 VQ - 25 - A - 14 - 1 - CC - ** - (L)

1
2
3
4
5
6
7
8
9

1 Series

3525: 3525VQ Fixed
Double Pump

2 Design Type

VQ: Mobile Design

3 Shaft End Pump

Flow at 1200 RPM, 100 PSI:
21, 25, 30, 35, 38

4 Ports

A: Inlet - 3" SAE, 4-Bolt Flange
Shaft End Outlet -
1.25" SAE, 4-Bolt Flange
Cover End Outlet -
1" SAE, 4-Bolt Flange

5 Cover End Pump

Flow at 1200 RPM, 100 PSI:
10, 12, 14, 17, 21

6 Shaft

1: 1-1/4" Dia., 0.312 Sq. St. Key
11: 14 Tooth Spline
86: 1-3/8" Dia., 0.312 Sq. St. Key

7 Port Orientation

(Viewed from Cover End)

With No. 1 Outlet Opposite Inlet

AA - No. 2 Outlet 135°CCW from Inlet
AB - No. 2 Outlet 45°CCW from Inlet
AC - No. 2 Outlet 45°CW from Inlet
AD - No. 2 Outlet 135°CW from Inlet

With No. 1 Outlet 90°CCW from Inlet

BA - No. 2 Outlet 135°CCW from Inlet
BB - No. 2 Outlet 45°CCW from Inlet
BC - No. 2 Outlet 45°CW from Inlet

7 Port Orientation (Cont.)

(Viewed from Cover End)

With No. 1 Outlet Inline with Inlet

CA - No. 2 Outlet 135°CCW from Inlet
CB - No. 2 Outlet 45°CCW from Inlet
CC - No. 2 Outlet 45°CW from Inlet
CD - No. 2 Outlet 135°CW from Inlet

With No. 1 Outlet 90°CW FROM Inlet

DA - No. 2 Outlet 135°CCW from Inlet
DB - No. 2 Outlet 45°CCW from Inlet
DC - No. 2 Outlet 45°CW from Inlet
DD - No. 2 Outlet 135°CW from Inlet

8 Design Number

9 Shaft Rotation

(Viewed from Shaft End)

No Code: Right Hand (CW)

L: Left Hand (CCW)

DOUBLE FIXED DISPLACEMENT 3525VQ SERIES

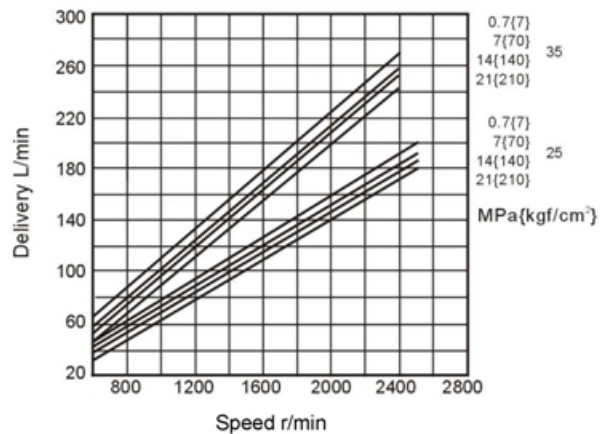
PERFORMANCE CURVES

3525VQ Double Pump

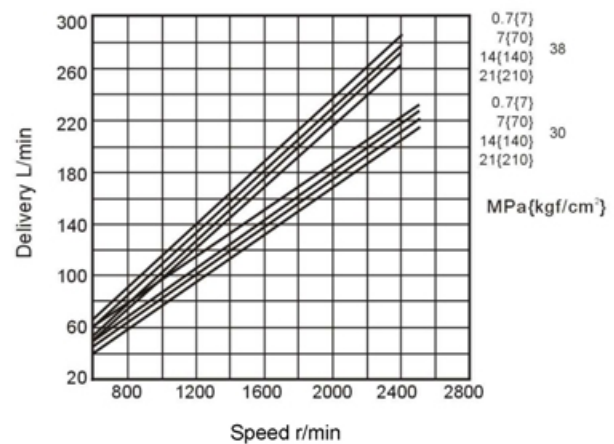
SAE 10W Fluid at 120°F.

Pump Inlet at 0" hg.

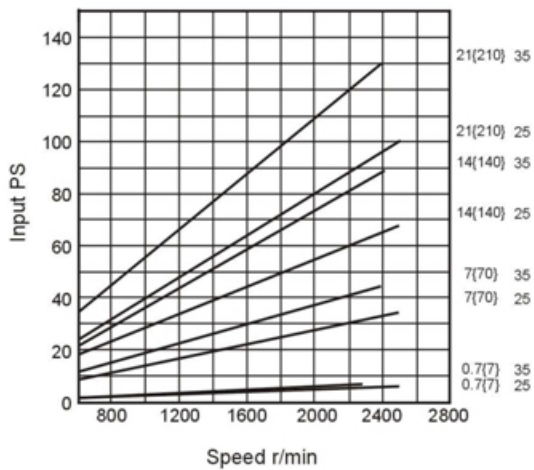
Codes 25 & 35 Displacement



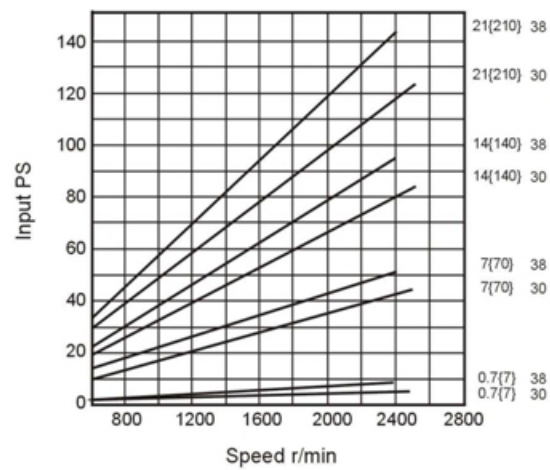
Codes 30 & 38 Displacement



Codes 25 & 35 Input



Codes 30 & 38 Input



DOUBLE FIXED DISPLACEMENT 3525VQ SERIES

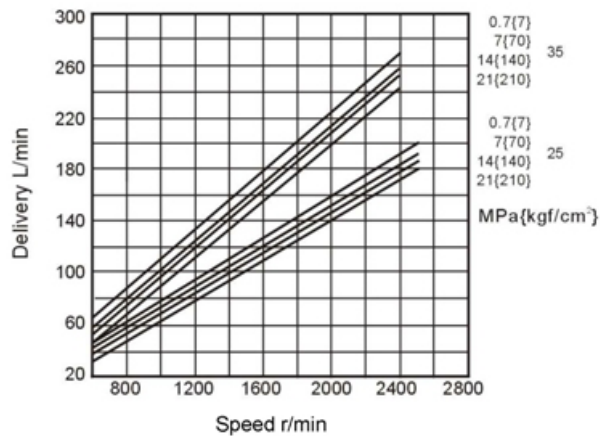
PERFORMANCE CURVES

3525VQ Double Pump

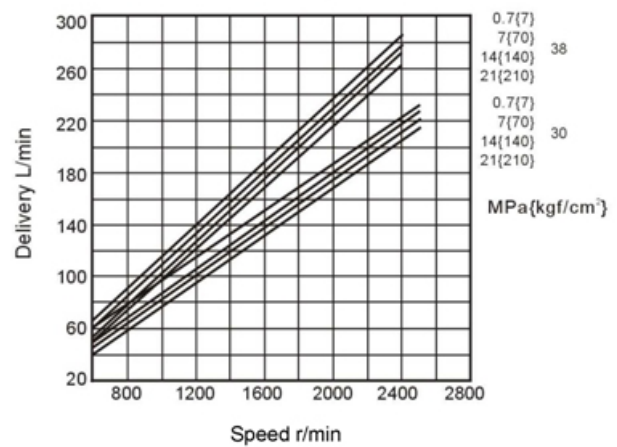
SAE 10W Fluid at 120°F.

Pump Inlet at 0" hg.

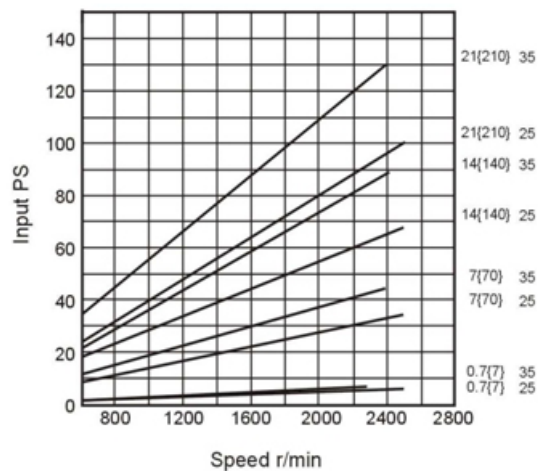
Codes 25 & 35 Displacement



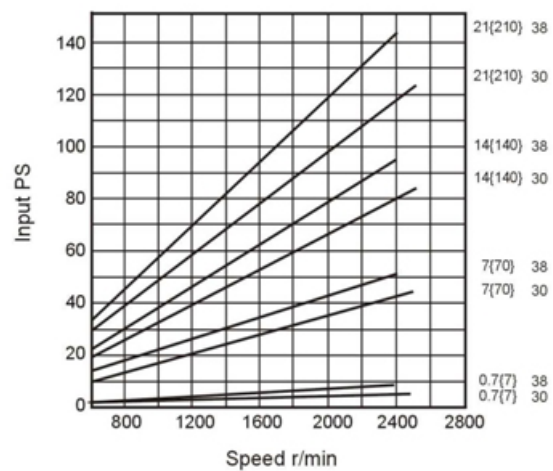
Codes 30 & 38 Displacement



Codes 25 & 35 Input



Codes 30 & 38 Input



DOUBLE FIXED DISPLACEMENT

3525VQ SERIES

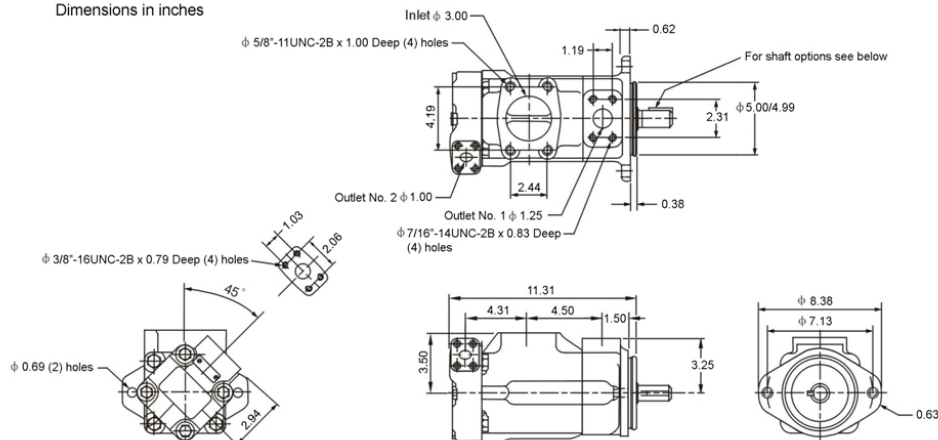
SPECIFICATIONS

Shaft End Pump	Flow Code GPM @ 1200 RPM & 100 PSI	Displacement in ³ /r (cm ³ /r)	Max. Speed RPM	Max. Pressure PSI (BAR)
P/N Example 3525VQ- <u>30</u> -A-12-1-CC-20 ("30" = Shaft End Pump)	21	3.90 (64)	2500	3000 (210)
	25	4.83 (79.2)		
	30	5.80 (95)		
	35	6.65 (109)	2400	
	38	7.20 (118)		
Cover End Pump	Flow Code GPM @ 1200 RPM & 100 PSI	Displacement in ³ /r (cm ³ /r)	Max. Speed RPM	Max. Pressure PSI (BAR)
P/N Example 3525VQ-30-A- <u>12</u> -1-CC-20 ("12" = Cover End Pump)	10	1.98 (32.5)	2700	3000 (210)
	12	2.34 (38.3)		
	14	2.64 (43.3)		
	17	3.20 (52.5)	2500	
	21	3.97 (65.0)		

DIMENSIONS

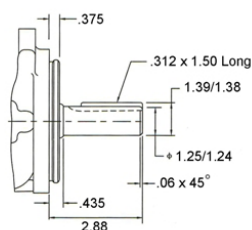
3525VQ Double Pump - Dimensions in Inches

3535VQ Dimensions
Dimensions in inches

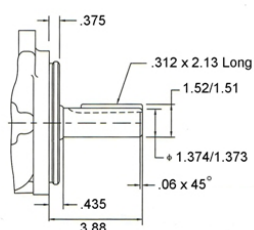


3525VQ Shafts
Dimensions in inches

#1 Straight Shaft



#86 Straight Shaft



#11 Splined Shaft

