

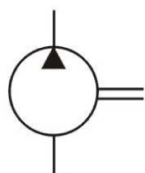
SINGLE FIXED DISPLACEMENT 35V SERIES



FEATURES

The Northman 35V Series pump is a fixed displacement, hydraulic balanced vane pump. This high performance intravane pump for industrial applications features high pressure capability with 12 vanes for low noise. The available flow ratings for the 35V series are from 21 GPM to 38 GPM at 1200 RPM. Viton seals are standard. Standard rotation is right-hand (clockwise), with left-hand rotation (counterclockwise) available ("L" option). The flange mounting is the SAE "C" two-bolt standard. The outlet port may be oriented in any one of four positions.

SYMBOL



MODEL CODE

35 **V** - **25** - **A** - **1** - **C** - ****** - **(L)**

1 **2** **3** **4** **5** **6** **7** **8**

1 Series

35: 35 Series Fixed Vane Pump

2 Design Type

V: Industrial Design

3 GPM

Flow at 1200 RPM, 100 PSI:

21, 25, 30, 35, 38

4 Ports

A: Inlet - 2" SAE, 4-Bolt Flange

Outlet - 1.25" SAE, 4-Bolt Flange

5 Shaft

1: 1-1/4" Dia., 0.3125 Sq. St. Key

11: 14 Tooth Spline

86: 1-3/8" Dia., 0.3125 Sq. St. Key

6 Position of Outlet Port

(Viewed from Cover End)

A: Opposite Inlet

B: 90° CCW from Inlet

C: Inline with Inlet

D: 90° CW from Inlet

7 Design Number

8 Shaft Rotation

(Viewed from Shaft End)

No Code: Right Hand (CW)

L: Left Hand (CCW)

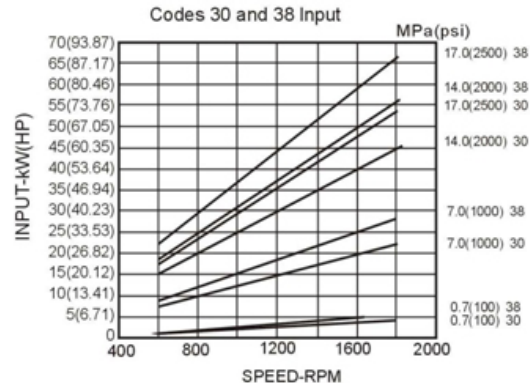
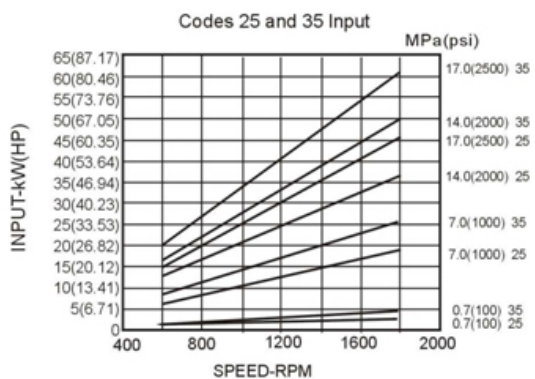
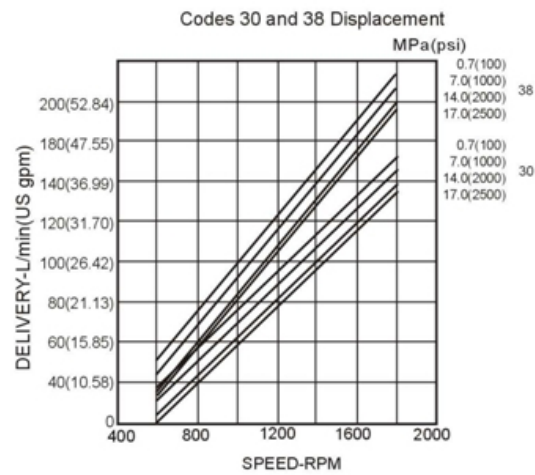
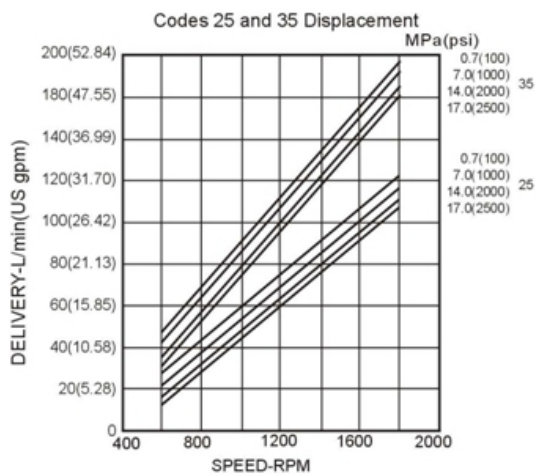
SINGLE FIXED DISPLACEMENT 35V SERIES

PERFORMANCE CURVES

35V Single Pump (Ring Size -25 & 35 GPM)

SAE 10W Fluid at 120°F.

Pump Inlet at 0° hg.



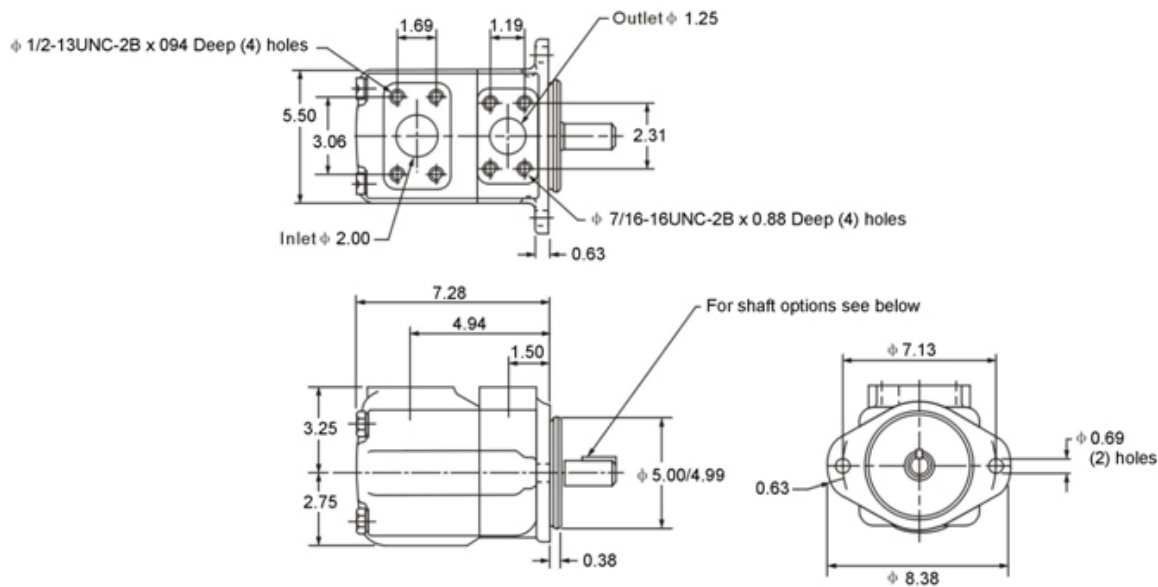
SINGLE FIXED DISPLACEMENT 35V SERIES

SPECIFICATIONS

Based on Petroleum Oil: 120°F (49°C), Viscosity 150 SUS at 100°F (38°C), 0 Inlet PSI					
Model	Flow Code GPM @ 1200 RPM & 100 PSI	Displacement in ³ /r (cm ³ /r)	Max. Speed RPM	Max. Pressure PSI (BAR)	Weight Lbs (Kg)
35V	21	4.09 (67)	1800	2500 (172)	50.0 (22.7)
	25	4.94 (81)			
	30	5.92 (97)			
	35	6.83 (112)			
	38	7.38 (121)			

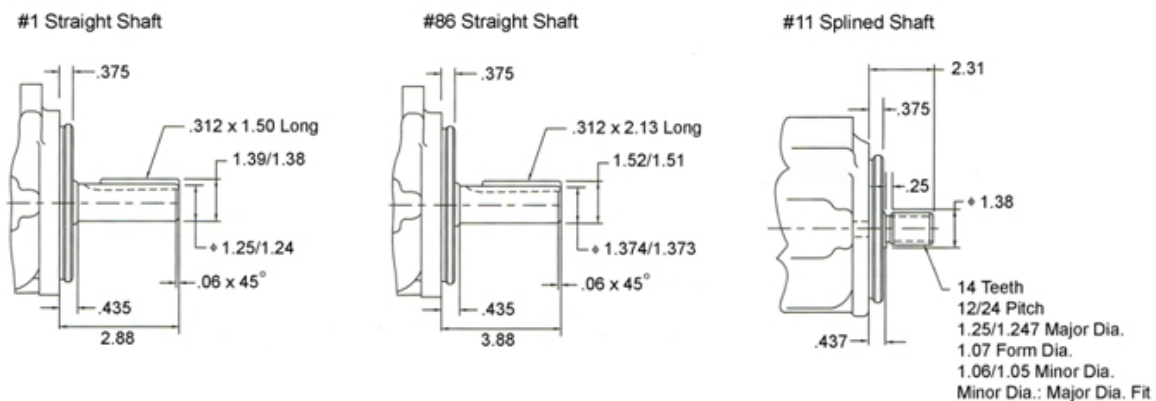
DIMENSIONS

35V Single Pump - Dimensions in Inches



35V Shafts

Dimensions in inches



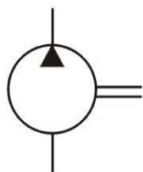
SINGLE FIXED DISPLACEMENT 35VQ SERIES



FEATURES

The Northman 35VQ Series pump is a fixed displacement, hydraulic balanced vane pump. This high performance intravane pump features the 10 vane design for the high pressure and speed requirements of mobile applications. The available flow ratings for the 35VQ series are from 21 GPM to 38 GPM at 1200 RPM. Viton seals are standard. Standard rotation is right-hand (clockwise), with left-hand rotation (counterclockwise) available ("L" option). The flange mounting is the SAE "C" two-bolt standard. The outlet port may be oriented in any one of four positions.

SYMBOL



MODEL CODE

35 **VQ** - **25** - **A** - **1** - **C** - ****** - **(L)**

1	2	3	4	5	6	7	8
1 Series	35: 35 Series Fixed Vane Pump		5 Shaft	1: 1-1/4" Dia., 0.3125 Sq. St. Key 11: 14 Tooth Spline 86: 1-3/8" Dia., 0.3125 Sq. St. Key		7 Design Number	8 Shaft Rotation (Viewed from Shaft End) No Code: Right Hand (CW) L: Left Hand (CCW)
2 Design Type	VQ: Mobile Design		6 Position of Outlet Port	(Viewed from Cover End) A: Opposite Inlet B: 90° CCW from Inlet C: Inline with Inlet D: 90° CW from Inlet			
3 GPM	Flow at 1200 RPM, 100 PSI: 21, 25, 30, 35, 38						
4 Ports	A: Inlet – 2" SAE, 4-Bolt Flange Outlet – 1.25" SAE, 4-Bolt Flange						

SINGLE FIXED DISPLACEMENT 35VQ SERIES

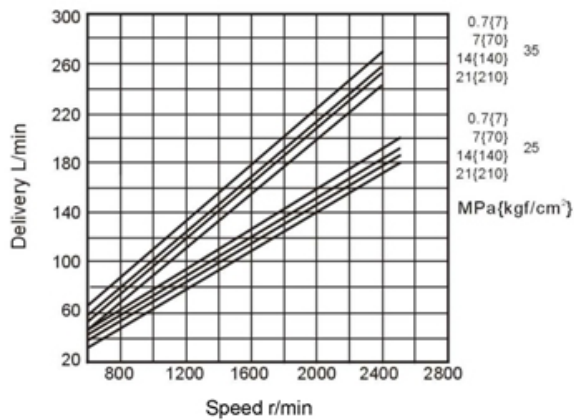
PERFORMANCE CURVES

35VQ Single Pump (Ring Size -25 & 35 GPM)

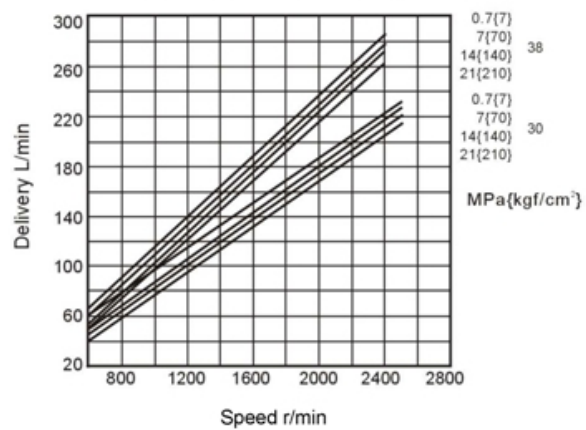
SAE 10W Fluid at 120°F.

Pump Inlet at 0° hg.

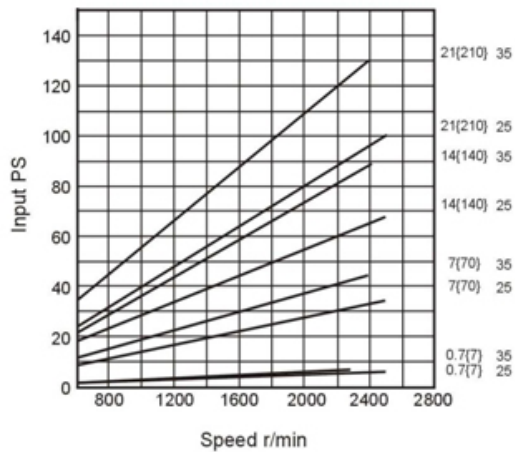
Codes 25 & 35 Displacement



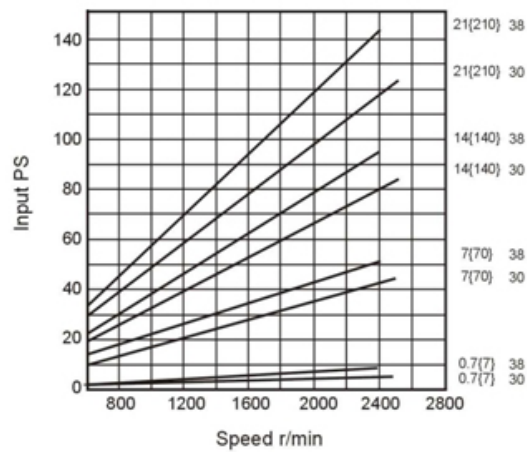
Codes 30 & 38 Displacement



Codes 25 & 35 Input



Codes 30 & 38 Input



SINGLE FIXED DISPLACEMENT

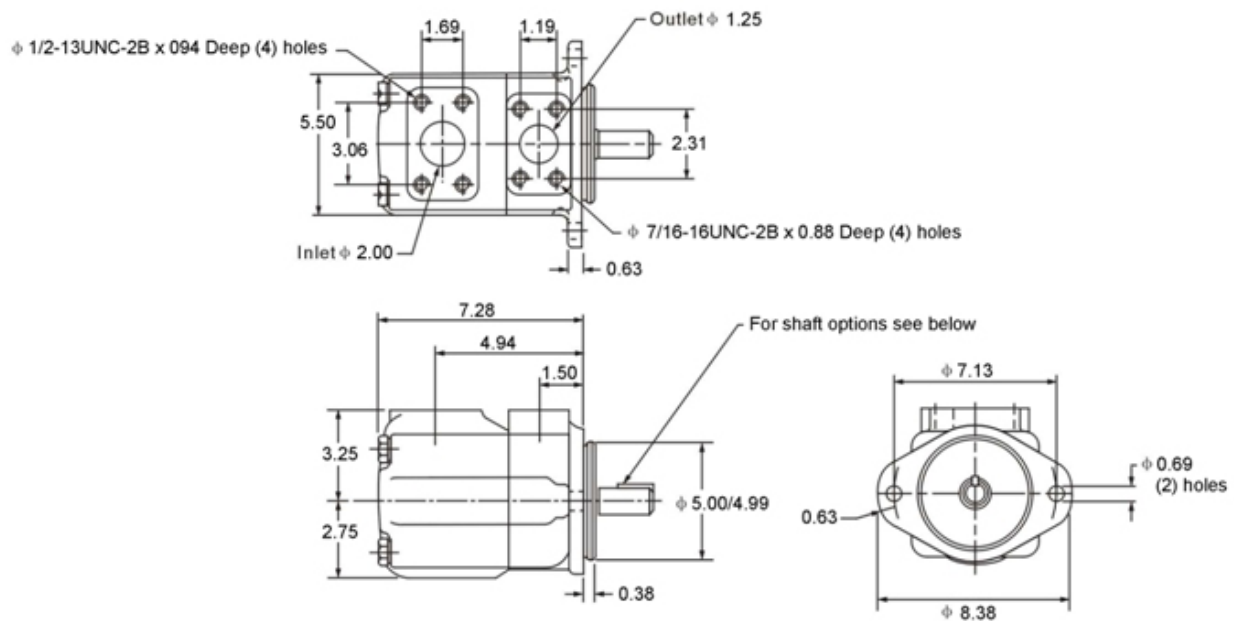
35VQ SERIES

SPECIFICATIONS

Based on Petroleum Oil: 120°F (49°C), Viscosity 150 SUS at 100°F (38°C), 0 Inlet PSI					
Model	Flow Code GPM @ 1200 RPM & 100 PSI	Displacement in³/r (cm³/r)	Max. Speed RPM	Max. Pressure PSI (BAR)	Weight Lbs (Kg)
35VQ	21	3.90 (64)	2500	3000 (210)	50.0 (22.7)
	25	4.83 (79.2)			
	30	5.80 (95)			
	35	6.65 (109)	2400		
	38	7.20 (118)			

DIMENSIONS

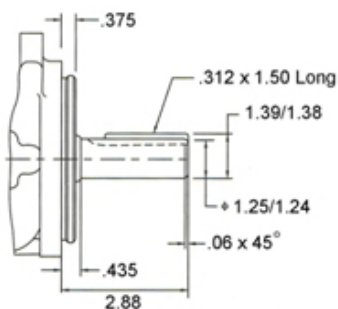
35VQ Single Pump - Dimensions in Inches



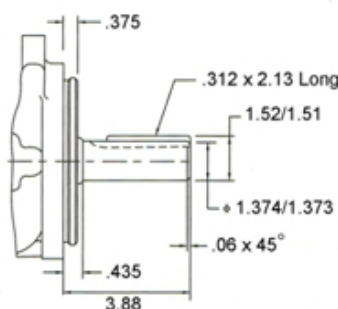
35VQ Shafts

Dimensions in inches

#1 Straight Shaft



#86 Straight Shaft



#11 Splined Shaft

