



## LTF Series

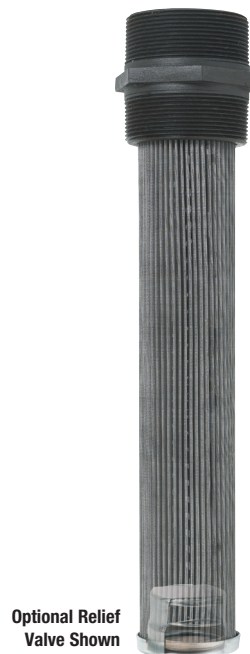
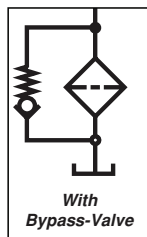
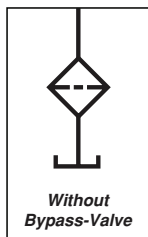
Designed for ease of servicing.  
Access to tank interior is not necessary

### Specifications

- Flows up to 49 GPM
- Cast iron bushing
- Perforated steel support tubes
- 100 mesh stainless steel pleated elements

### Options

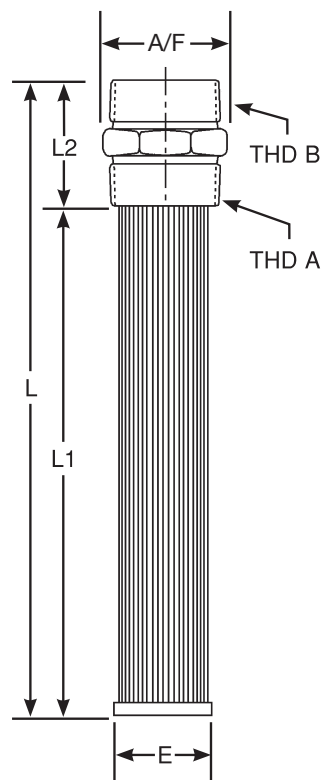
- No bypass or 5 P.S.I. bypass
- 30, 60, 200 mesh available upon to request



## Dimensional Details

MODEL NUMBER	FLOW	A NPT	B NPT		L	L1	L2	E	HEX A/F	AREA CM <sup>2</sup>
LTF-32-32	50 GPM 200 LPM	2"	2"	IN MM	13.50 343	10.75 273	2.72 69	2.13 54	2.75 70	135 870

\*See Page 35a for WFN Series Weld Flanges  
Pressure drop will be < 2PSI



## Ordering Code

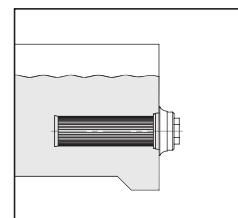
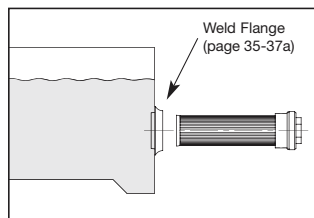
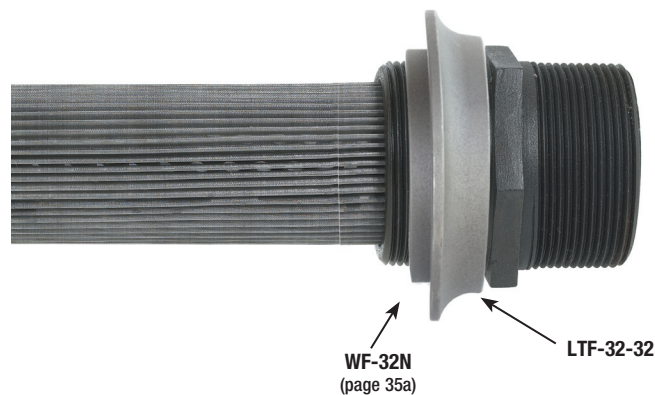
LTF - 32-32 - R3 - 100

SERIES
LTF

SIZE
32-32

BYPASS	
OMIT	NO BYPASS
R3	3 PSI BYPASS
R5	5 PSI BYPASS

MESH	
100	100 MESH (STANDARD)
30	30 MESH
60	60 MESH
200	200 MESH



### Mounting Details:

Mount through sidewall or through tank top and into standpipe.