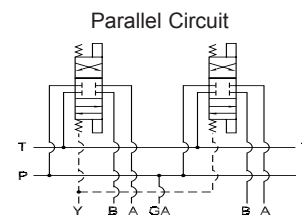
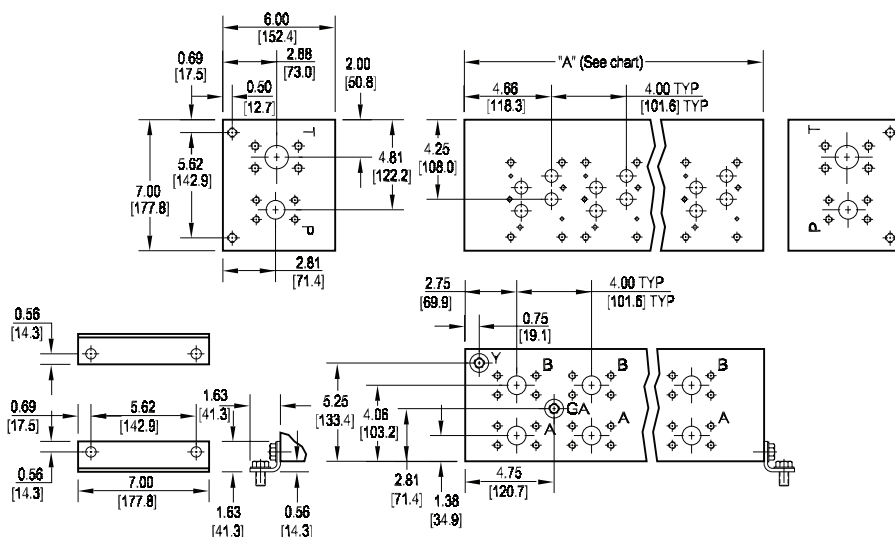
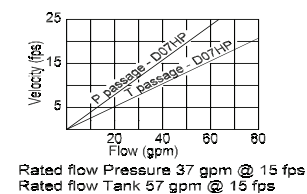


D07 High Flow Parallel Circuit Manifold - Flange Ports



Flow Curve



| No. of stations | * 01 | 02 | 03 | 04 | 05 | 06 |
|-----------------------------|-----------------|------------------|------------------|------------------|------------------|------------------|
| "A" length inch [mm] | 6.63 [168.3] | 10.63 [269.9] | 14.63 [371.5] | 18.63 [473.1] | 22.63 [574.7] | 26.63 [676.3] |
| apx. weight alum lb [kg] | 28 [12.6] | 45 [20] | 61 [28] | 78 [36] | 95 [43] | 112 [51] |
| apx. weight iron lb [kg] | 75 [34] | 120 [55] | 166 [75] | 211 [96] | 257 [116] | 302 [137] |

* Length of 01 station with relief cavity 7.13 [181.0]. Gauge port not available on 01 station.

All mounting hardware is supplied.
See page 63 for itemized list.

| Port code | Valve mtg. | Manifold mtg. | Flange mtg. | GA Port | Y Port | X Port * |
|--------------|--|-------------------------------|-----------------------------|-----------------|------------------------|------------------------|
| F | 0.38-16 UNC x 1.00 [25] DP 0.25-20 UNC x 0.75 [19] DP | 0.50-13 UNC x 0.88 [22] DP | ISO 6162 Type II - Inch | -6 SAE J1926 | -6 SAE J1926 | -4 SAE J1926 |
| F / M | M10 ISO 6H x 1.00 [25] DP M6 ISO 6H x 0.75 [19] DP | M12 ISO 6H x 0.88 [22] DP | ISO 6162 Type I - metric | NONE | M14 ISO 6149 | M10 ISO 6149 |

* X port is optional. See options on next page.

Specifications, descriptions, and dimensional data are subject to correction or change without notice or incurring obligation.
Download latest catalog page revisions at www.daman.com.

Ordering Information

| Material | Valve Pattern | Circuit | No. of Stations | Valve Spacing | Port Threads | / | Options |
|----------|---------------|---------|-----------------|---------------|--------------|---|---------|
|----------|---------------|---------|-----------------|---------------|--------------|---|---------|

| Material | |
|----------|---|
| A | Aluminum - 6061-T6 3000† psi • 20.7 MPa |
| D | Ductile Iron - D4512 5000† psi • 34.5 MPa |
| N | Electroless Nickel Coated Ductile Iron - D4512 5000† psi • 34.5 MPa |

† Working pressure should be considered in accordance with ISO 4413 to determine appropriate material type.

| Circuit | |
|-----------|-------------------------------|
| HP | Parallel Circuit High Flow |

| Valve Spacing | |
|---------------|-----------------------|
| 4 | 4.00 inch 101.6 mm |

| No. of Stations | |
|--------------------------|----------------------------------|
| Aluminum or Ductile Iron | |
| 01...06 | Available with spacing code 4 |

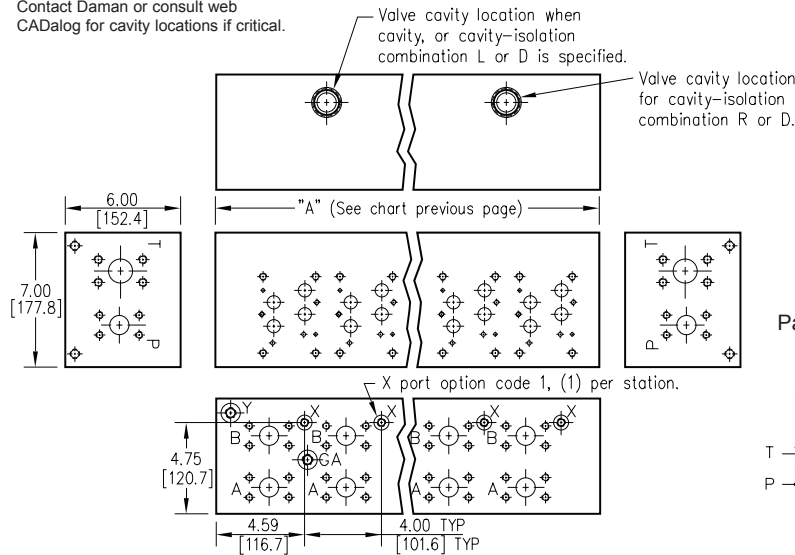
| Port Threads | | |
|--------------|---|-----------------|
| P,A,B | T | |
| F | CODE 61 4-Bolt Flange SAE J518 - CODE 61 ISO 6162 - 2.5 to 35 MPa | 1.00 CODE 61 |

| Options | |
|---|--|
| See next page for available options and ordering codes. | |

| Valve Pattern | |
|---------------|---|
| D07 | ISO 4401-07-06 NFPA T3.5.1-D07 See Tech Information |

Options - D07 High Flow Parallel Manifold Flange Ports

Contact Daman or consult web CADalog for cavity locations if critical.



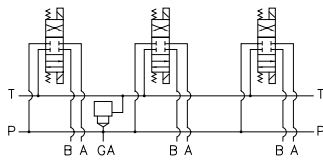
| ISOLATIONS | | |
|--|----------------------------------|--------------------------|
| Daman isolation options allow a manifold to have two independent pressure and/or tank ports. Isolations are drilled rather than plugged to ensure a leakproof and failproof isolation. | | |
| Ordering code letter: | * Isolation is between stations: | Available # of stations: |
| A | 01 & 02 | 02-06 |
| B | 02 & 03 | 03-06 |
| C | 03 & 04 | 04-06 |
| D | 04 & 05 | 05-06 |
| E | 05 & 06 | 06 |

* Stations are numbered left to right.

NOTES:

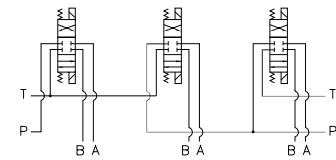
- 1) The GA port is not available on a (1) station manifold.
- 2) The GA port is not available when a pressure isolation is located between stations 1 & 2.

Parallel Circuit with Cavity



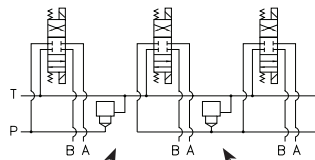
Valves with P in the nose and T out the side must be used.

Parallel Circuit with Isolations



Manifold shown with P isolation between 1 & 2 (PA), and T isolation between 2 & 3 (TB).

Cavity & Isolation Combinations



Option code L
Cavity left of isolation
Option code R
Cavity right of isolation
Option code D includes both cavities

Ordering Information

| ... / | | Thread Type | Pilot Ports | Cavity | Pressure Isolation | Tank Isolation | Cavity & Isolation Combinations | | | | | | | | | | | | | | | | | | | | | | | | | | | | | | | |
|--|--|---|-------------|--------|------------------------------|----------------------|---------------------------------|--|--|---|--------------------|--|----------------------------------|--|---------|--|---|---|--|--|----------------|--|----------------------------------|--|---------|----------------------------------|--|--|---------------------------------|--|--|--|---|---|---|--|---|---|
| | | <table><tr><th colspan="2">Thread Type</th></tr><tr><td>Omit</td><td>Inch threads / ports</td></tr><tr><td>M</td><td>Metric threads / ports</td></tr></table> | Thread Type | | Omit | Inch threads / ports | M | Metric threads / ports | | <table><tr><th colspan="2">Cavity</th></tr><tr><td colspan="2">Omit if cavity not required</td></tr><tr><td>C</td><td>Common cavity: No solenoid clearance. C-16-2 (P in nose)</td></tr><tr><td>S</td><td>Sun Cavity: T-16A (P in nose) See Tech Info for valves.</td></tr></table> | Cavity | | Omit if cavity not required | | C | Common cavity: No solenoid clearance. C-16-2 (P in nose) | S | Sun Cavity: T-16A (P in nose) See Tech Info for valves. | | <table><tr><th colspan="2">Tank Isolation</th></tr><tr><td colspan="2">Omit if T isolation not required</td></tr><tr><td>TA...TE</td><td>Available with spacing code 4</td></tr></table> | Tank Isolation | | Omit if T isolation not required | | TA...TE | Available with spacing code 4 | | <table><tr><th colspan="2">Cavity & Isolation Combinations</th></tr><tr><td colspan="2">Specify when using a combination of cavity and isolation options. Cavities do not have solenoid clearance.</td></tr><tr><td>L</td><td>Relief cavity is located left of the isolation.</td></tr><tr><td>R</td><td>Relief cavity is located right of the isolation.</td></tr><tr><td>D</td><td>Two relief cavities, one each side of isolation</td></tr></table> | Cavity & Isolation Combinations | | Specify when using a combination of cavity and isolation options. Cavities do not have solenoid clearance. | | L | Relief cavity is located left of the isolation. | R | Relief cavity is located right of the isolation. | D | Two relief cavities, one each side of isolation |
| Thread Type | | | | | | | | | | | | | | | | | | | | | | | | | | | | | | | | | | | | | | |
| Omit | Inch threads / ports | | | | | | | | | | | | | | | | | | | | | | | | | | | | | | | | | | | | | |
| M | Metric threads / ports | | | | | | | | | | | | | | | | | | | | | | | | | | | | | | | | | | | | | |
| Cavity | | | | | | | | | | | | | | | | | | | | | | | | | | | | | | | | | | | | | | |
| Omit if cavity not required | | | | | | | | | | | | | | | | | | | | | | | | | | | | | | | | | | | | | | |
| C | Common cavity: No solenoid clearance. C-16-2 (P in nose) | | | | | | | | | | | | | | | | | | | | | | | | | | | | | | | | | | | | | |
| S | Sun Cavity: T-16A (P in nose) See Tech Info for valves. | | | | | | | | | | | | | | | | | | | | | | | | | | | | | | | | | | | | | |
| Tank Isolation | | | | | | | | | | | | | | | | | | | | | | | | | | | | | | | | | | | | | | |
| Omit if T isolation not required | | | | | | | | | | | | | | | | | | | | | | | | | | | | | | | | | | | | | | |
| TA...TE | Available with spacing code 4 | | | | | | | | | | | | | | | | | | | | | | | | | | | | | | | | | | | | | |
| Cavity & Isolation Combinations | | | | | | | | | | | | | | | | | | | | | | | | | | | | | | | | | | | | | | |
| Specify when using a combination of cavity and isolation options. Cavities do not have solenoid clearance. | | | | | | | | | | | | | | | | | | | | | | | | | | | | | | | | | | | | | | |
| L | Relief cavity is located left of the isolation. | | | | | | | | | | | | | | | | | | | | | | | | | | | | | | | | | | | | | |
| R | Relief cavity is located right of the isolation. | | | | | | | | | | | | | | | | | | | | | | | | | | | | | | | | | | | | | |
| D | Two relief cavities, one each side of isolation | | | | | | | | | | | | | | | | | | | | | | | | | | | | | | | | | | | | | |
| | | <table><tr><th colspan="2">Pilot Ports</th></tr><tr><td colspan="2">Omit if X ports not required</td></tr><tr><td>1</td><td>X port ISO 4401-07-06 NFPA T3.5.1-D07</td></tr></table> | Pilot Ports | | Omit if X ports not required | | 1 | X port ISO 4401-07-06 NFPA T3.5.1-D07 | | <table><tr><th colspan="2">Pressure Isolation</th></tr><tr><td colspan="2">Omit if P isolation not required</td></tr><tr><td>PA...PE</td><td>Available with spacing code 4</td></tr></table> | Pressure Isolation | | Omit if P isolation not required | | PA...PE | Available with spacing code 4 | | | | | | | | | | | | | | | | | | | | | | |
| Pilot Ports | | | | | | | | | | | | | | | | | | | | | | | | | | | | | | | | | | | | | | |
| Omit if X ports not required | | | | | | | | | | | | | | | | | | | | | | | | | | | | | | | | | | | | | | |
| 1 | X port ISO 4401-07-06 NFPA T3.5.1-D07 | | | | | | | | | | | | | | | | | | | | | | | | | | | | | | | | | | | | | |
| Pressure Isolation | | | | | | | | | | | | | | | | | | | | | | | | | | | | | | | | | | | | | | |
| Omit if P isolation not required | | | | | | | | | | | | | | | | | | | | | | | | | | | | | | | | | | | | | | |
| PA...PE | Available with spacing code 4 | | | | | | | | | | | | | | | | | | | | | | | | | | | | | | | | | | | | | |