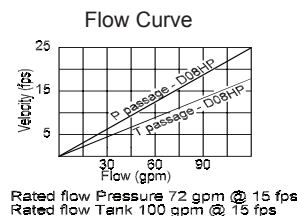
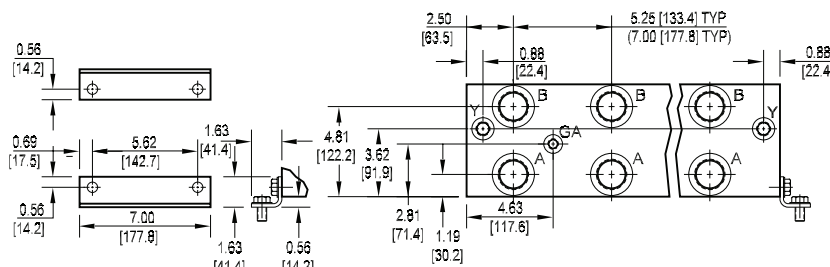
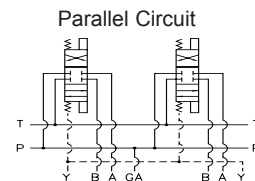
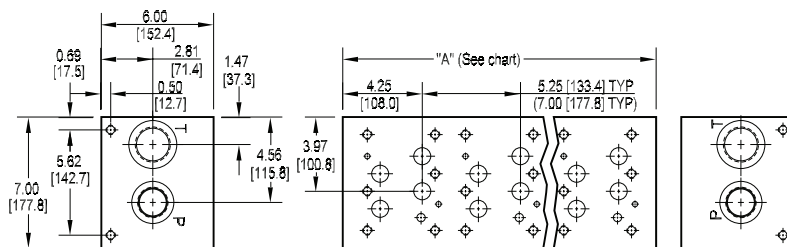


# D08 High Flow Parallel Circuit Manifold



| No. of stations                       | * 01            | 02               | 03               | 04               | 05               | 06               | 07               |
|---------------------------------------|-----------------|------------------|------------------|------------------|------------------|------------------|------------------|
| "A" length (code 5 spa.)<br>inch [mm] | 6.25<br>[158.8] | 11.50<br>[292.1] | 16.75<br>[425.5] | 22.00<br>[558.8] | 27.25<br>[692.2] | 32.50<br>[825.5] | 37.75<br>[958.9] |
| apx. weight alum<br>lb [kg]           | 26<br>[12]      | 48<br>[22]       | 70<br>[32]       | 92<br>[42]       | 114<br>[52]      | 136<br>[62]      | 158<br>[72]      |
| apx. weight iron<br>lb [kg]           | 69<br>[31]      | 126<br>[57]      | 183<br>[83]      | 240<br>[109]     | 298<br>[135]     | 355<br>[161]     | 412<br>[187]     |
| "A" length (code 7 spa.)<br>inch [mm] | --              | 13.25<br>[336.6] | 20.25<br>[514.4] | 27.25<br>[692.2] | 34.25<br>[870.0] |                  |                  |
| apx. weight alum<br>lb [kg]           | --              | 55<br>[25]       | 85<br>[39]       | 114<br>[52]      | 143<br>[65]      |                  |                  |
| apx. weight iron<br>lb [kg]           | --              | 145<br>[66]      | 221<br>[100]     | 298<br>[135]     | 374<br>[170]     |                  |                  |

\* Gauge port not available on 01 station.

All mounting hardware is supplied.  
See page 63 for itemized list.

| Port code | Valve mtg.                    | Manifold mtg.                   |
|-----------|-------------------------------|---------------------------------|
| P, S      | 0.50-13 UNC x<br>1.19 [30] DP | 0.50-13 UNC x<br>0.88 [22.3] DP |
| B, M, T   | M12 ISO 6H x<br>1.19 [30] DP  | M12 ISO 6H x<br>0.88 [22.3] DP  |

Specifications, descriptions, and dimensional data are subject to correction or change without notice or incurring obligation.  
Download latest catalog page revisions at [www.daman.com](http://www.daman.com).

## Ordering Information

| Material | Valve Pattern | Circuit | No. of Stations | Valve Spacing | Port Threads | / | Options |
|----------|---------------|---------|-----------------|---------------|--------------|---|---------|
|----------|---------------|---------|-----------------|---------------|--------------|---|---------|

| Material |   |
|----------|---|
| <b>A</b> | Aluminum - 6061-T6<br>3000† psi • 20.7 MPa                                |
| <b>D</b> | Ductile Iron - D4512<br>5000† psi • 34.5 MPa                              |
| <b>N</b> | Electroless Nickel Coated<br>Ductile Iron - D4512<br>5000† psi • 34.5 MPa |

† Working pressure should be considered in accordance with ISO 4413 to determine appropriate material type.

| Valve Pattern |   |
|---------------|---|
| <b>D08</b>    | ISO 4401-08-07<br>NFPA T3.5.1-D08<br>See Tech Information |

| Circuit   |                               |
|-----------|-------------------------------|
| <b>HP</b> | Parallel Circuit<br>High Flow |

| No. of Stations |                               |
|-----------------|-------------------------------|
| Aluminum        |                               |
| <b>01...07</b>  | Available with spacing code 5 |
| <b>02...05</b>  | Available with spacing code 7 |
| Ductile Iron    |                               |
| <b>01...07</b>  | Available with spacing code 5 |
| <b>02...05</b>  | Available with spacing code 7 |

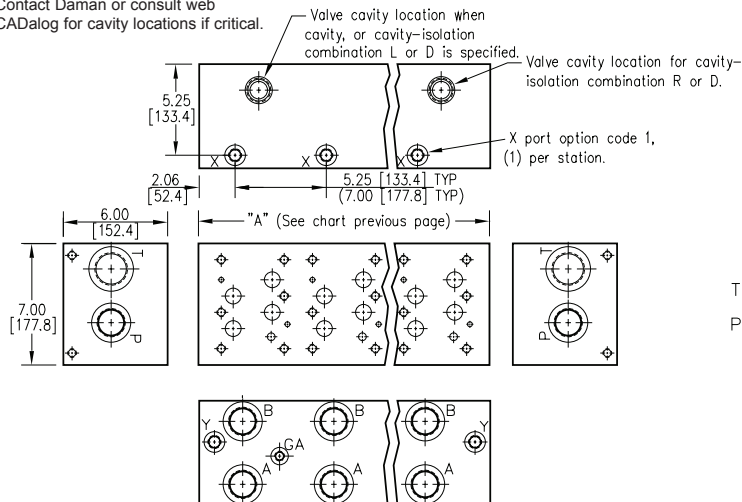
| Valve Spacing |                       |
|---------------|-----------------------|
| <b>5</b>      | 5.25 inch<br>133.4 mm |
| <b>7</b>      | 7.00 inch<br>177.8 mm |

| Port Threads |                     | P,A,B | T    | Y    | X<br>optional | GA   |
|--------------|---------------------|-------|------|------|---------------|------|
| <b>P</b>     | NPTF • ANSI B1.20.3 | 1.25  | 1.50 | 0.38 | 0.25          | 0.25 |
| <b>S</b>     | SAE • ISO 11926     | -20   | -24  | -8   | -4            | -6   |
| <b>B</b>     | BSPP • ISO 1179     | 1.25  | 1.50 | 0.50 | 0.25          | none |
| <b>M</b>     | ISO • ISO 6149      | M42   | M48  | M16  | M10           | none |
| <b>T</b>     | BSPT • ISO 7        | 1.25  | 1.50 | 0.50 | 0.25          | none |

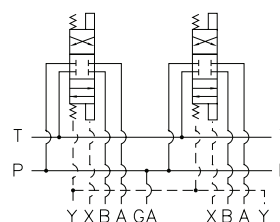
| Options   |  |
|---|--|
| See next page for available options and ordering codes. |  |

# Options - D08 High Flow Parallel Manifold

Contact Daman or consult web  
CADalog for cavity locations if critical.



Parallel Circuit with X



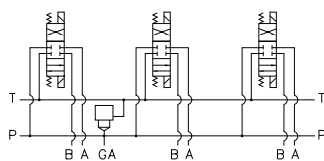
## ISOLATIONS

Daman isolation options allow a manifold to have two independent pressure and/or tank ports. Isolations are drilled rather than plugged to ensure a leakproof and failproof isolation.

| Ordering code letter: | * Isolation is between stations: | Available # of stations: |
|-----------------------|----------------------------------|--------------------------|
| 5.25 [133.4] spacing  |                                  |                          |
| A                     | 01 & 02                          | 02-07                    |
| B                     | 02 & 03                          | 03-07                    |
| C                     | 03 & 04                          | 04-07                    |
| D                     | 04 & 05                          | 05-07                    |
| E                     | 05 & 06                          | 06-07                    |
| F                     | 06 & 07                          | 07                       |
| 7.00 [177.8] spacing  |                                  |                          |
| A                     | 01 & 02                          | 02-05                    |
| B                     | 02 & 03                          | 03-05                    |
| C                     | 03 & 04                          | 04-05                    |
| D                     | 04 & 05                          | 05                       |

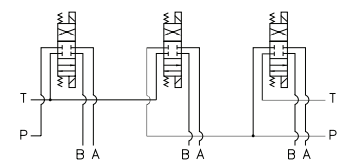
\* Stations are numbered left to right.

Parallel Circuit with Cavity



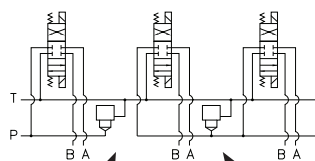
Valves with P in the nose and T out the side must be used.

Parallel Circuit with Isolations



Manifold shown with P isolation between 1 & 2 (PA), and T isolation between 2 & 3 (TB).

Cavity & Isolation Combinations



Option code L  
Cavity left of isolation  
Option code R  
Cavity right of isolation  
Option code D includes both cavities

## NOTES:

- 1) The GA port is not available on a (1) station manifold.
- 2) The GA port is not available when a pressure isolation is located between stations 1 & 2.

# Ordering Information

