



EPA Sealed Emissions Caps & Necks

Model FC Cap & FN Series necks

- EPA carb compliant
- Anti-splash self closing flap on fuel neck available
- Tethered audible cap FC-1 SAE J1114 threads
- Tested to a positive 3.5 PSIG (24.5 KPA) or vacuum pressure of .1 PSIG (.7 KPA)
- No need to change the cutout openings in your fuel tank

Option

- Diesel version with open bottom available

Weld Neck Models

FN270 Diesel

FN270-FL (Flapper) Fuel

Weld Neck Models

FN3HN Diesel

FN3HN-FL (Flapper) Fuel

FL suffix specifies Neck with Fuel Insert



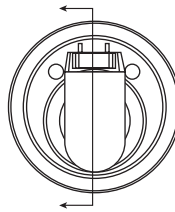
FC-1 &
FN-270-FL



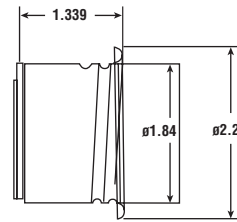
FN-3HN-FL



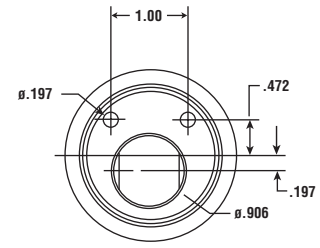
FN-3HN-FL



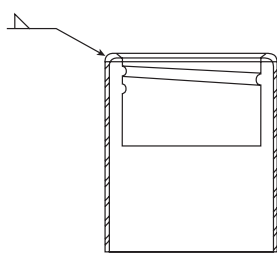
(FL) Fuel Insert
(Bottom)



(FL) Fuel Insert
(Side View)

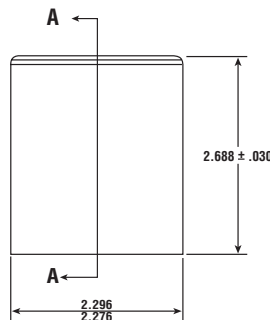


(FL) Fuel Insert
(Top)

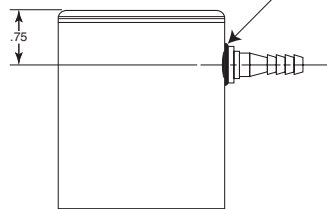


Section A-A

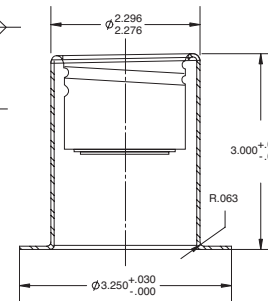
FN270-FL



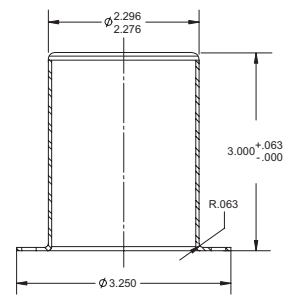
FN270



FN270-FL-OF
FN270-OF



FN3HN-FL



FN3HN

CARB (California Air Resource Board) SORE (Small Off-Road Engine) regulations Fuel Cap Performance Standards 40CFR 1060.245

- Fuel cap must be permanently tethered to the tank, equipment, or engine
- Fuel cap must be designed to provide physical and/or audible feedback to the user that a fuel tank vapor seal is established.
- Use a tethered or self closing gas cap on a fuel tank that stays sealed up to a positive pressure of 3.5 PSI or vacuum pressure of 1 PSI.
- The FC-1 tethered fuel cap has a low permeation seal gasket which threads unto FN series necks and these two components become a part of the customer's C.A.R.B. tank system certification.
- The FN270-OF series of necks has 1/4" hose barb stem provision for adding hose for a carbon canister or other device.



Hydraulic Filler Necks & Caps

Lenz Hydraulic Filler Caps & Necks are fabricated of heavy gauge steel with an optional stainless steel screen. Caps are available in standard or lockable, non-vented or vented.

Hydraulic Fill Necks

HYD Series-Hydraulic Applications

- 16 gauge (.060) steel not plated
- Tube extension .12 wall thickness, 2.21 diameter
- Standard 1.3", 3", 6" & 8" length tube extension
- Tube extension not plated / Safety chain standard
- SAE J829 Mounting Flange

Options

- Stainless steel, aluminum available
- Angle tube cutoffs / lockable tab available
- Stainless steel screen std. 4.5" 40 mesh
- Overflow tube available
- Threaded & flanged connection available
- SR option is neck with screen retainer, to allow neck to be welded, order screen separately if required
- 4.5 option the screen is assembled to the neck

Dimensional Detail

| MODEL NUMBER | | Optional Screen | | Length | | Wall | |
|--------------|----|-----------------|-----|--------|-----|------|------|
| | | A | B | C | D | E | F |
| HYD-125 | IN | N/A | N/A | 1.25 | N/A | 2.2 | 0.06 |
| | MM | N/A | N/A | 32 | N/A | 53 | 15 |
| HYD-270 | IN | N/A | N/A | 2.7 | N/A | 2.2 | 0.06 |
| | MM | N/A | N/A | 69 | N/A | 53 | 15 |
| HYD-403 | IN | 1 | 4.5 | 3 | 1.2 | 2.2 | 0.12 |
| | MM | 25 | 114 | 76 | 30 | 53 | 3 |
| HYD-406 | IN | 1 | 4.5 | 6 | 1.2 | 2.2 | 0.12 |
| | MM | 25 | 114 | 152 | 30 | 53 | 3 |
| HYD-408 | IN | 1 | 4.5 | 8 | 1.2 | 2.2 | 0.12 |
| | MM | 25 | 114 | 204 | 30 | 53 | 3 |
| HYD-4** | IN | 1 | 4.5 | N/A | 1.2 | 2.2 | 0.12 |
| | MM | 25 | 114 | N/A | 30 | 53 | 3 |

3", 6" & 8" stock length. Mark up drawing and fax for quotation.

Ordering Code

| LC — * — HYD — 406 — 4.5 | | | | | | | | | |
|--------------------------|----------|----------|-----------|--------|-----|--------------|------|---------------------------------|--|
| LOCK OPTIONAL | | MATERIAL | | SERIES | | NECK LENGTHS | | OPTIONS | |
| LC | LOCKABLE | OMIT | STEEL | HYD | 1.3 | 1.3" | | OMIT | |
| OMIT | | SS | STAINLESS | | 403 | 3" | 4.5" | 40 MESH SCREEN | |
| | | ALUM | ALUMINUM | | 406 | 6" | 52° | ANGLE OF CUT (50 PIECE MIN.) | |
| | | | | | 408 | 8" | | | |
| | | | | | | SPECIFY | | | |

*Caps ordered separately see page 1b, 2b and 3b for cap only ordering options.

Replacement Fill Screen is HYD-4.5

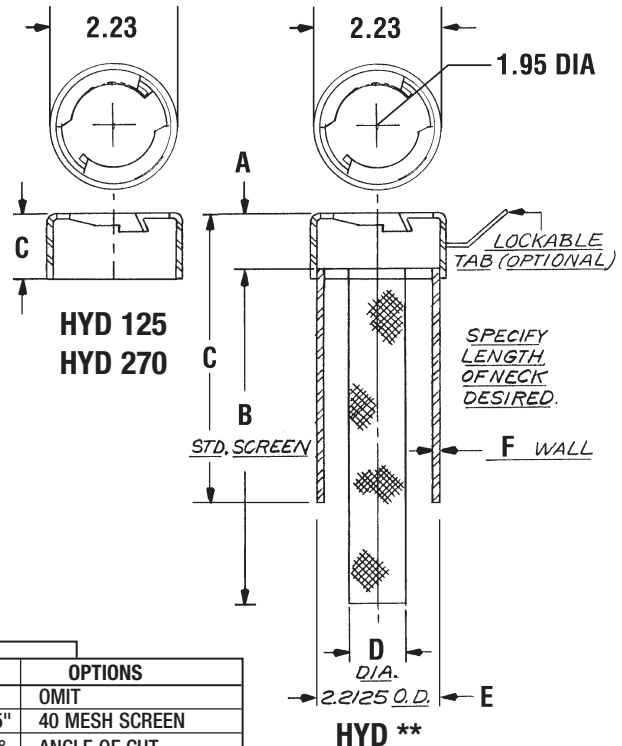


Stainless Steel Note:
The neck is 321 deep drawing 2B or 2D per MIL-S-6721
The tube is 304/304L per ASTM-A269/249
*Aluminum neck is 3003-0 Tempered



HYD-406
(Neck Only / Caps Ordered Separately)

ex. HYD-403-4.5
(Neck Only / Caps Ordered Separately)
Shown with 5NV Cap





Diesel Filler Necks & Caps

Lenz Fuel/Diesel Filler Caps & Necks are fabricated of heavy gauge steel with an optional stainless steel screen. Fuel Caps are available in standard or lockable, non-vented or vented – the vented Fuel Caps having a built-in diaphragm or deflector to reduce spillage.

Diesel Fill Necks

HDF Series-Diesel Fuel Applications

- 16 gauge (.060) steel
- Tube extension .12 wall thickness, 2.56 diameter
- Standard 3", 6" & 8" length tube extension
- Use Lenz 6V and LC-6V series vented caps
- Tube extension not plated
- Safety chain standard
- Stainless steel screen 40 mesh std.

Options

- Stainless steel, aluminum available
- Angle tube cutoffs / Lockable tab available
- Stainless steel screen std.. 4.5" 20 mesh
- Overflow tube available
- Dipstick available
- Non vented 6NV, LC-6NV
- SR option is neck with screen retainer, to allow neck to be welded, order screen separately if required
- 4.5 option the screen is assembled to the neck

| MODEL NUMBER | | Screen | | Length | | Wall | |
|--------------|----|--------|------|--------|------|------|-------|
| | | A | B | C | D | E | F |
| HDF-1.3 | IN | 1.3" | 4.5" | | 1.5" | 2.6" | 0.12" |
| | MM | 37 | 114 | | 38 | 66 | 3 |
| HDF-603 | IN | 1.44" | 4.5" | 3" | 1.5" | 2.6" | 0.12" |
| | MM | 37 | 114 | 76 | 38 | 66 | 3 |
| HDF-606 | IN | 1.44" | 4.5" | 6" | 1.5" | 2.6" | 0.12" |
| | MM | 37 | 114 | 152 | 38 | 66 | 3 |
| HDF-608 | IN | 1.44" | 4.5" | 8" | 1.5" | 2.6" | 0.12" |
| | MM | 37 | 114 | 204 | 38 | 66 | 3 |
| HDF-6** | IN | 1.44" | 4.5" | | 1.5" | 2.6" | 0.12" |
| | MM | 37 | 114 | | 38 | 66 | 3 |

3", 6" & 8" Stock length. Mark up drawing and fax for quotation.
Replacement fill screw HDS-4.5

**Caps ordered separately see below page 7b for cap only ordering options.*

Replacement Fill Screen is HDS 4.5 (40 mesh)

Non-vented Caps tested to 10 PSI

Replacement Fill Screen is 4.5 20M (20 Mesh)

Stainless Steel Note:
The neck is 30L/304 deep drawing
The tube is 30L/304 per ASTM-A269/249

Ordering Code

LC — * — HDF — 606 — 4.5

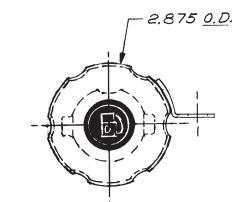
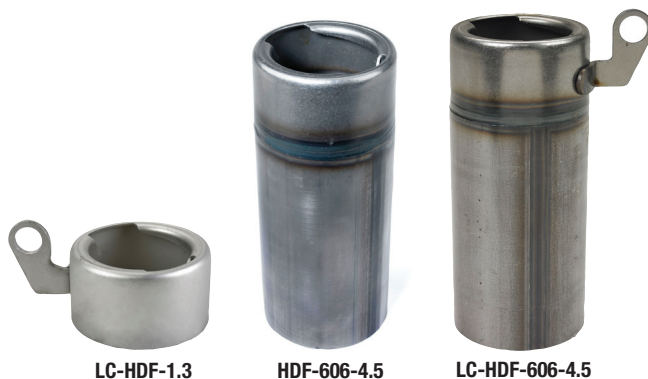
| |
|------------------|
| LOCK OPTIONAL |
| LC |
| OMIT |

| | |
|------|-----------|
| OMIT | STEEL |
| SS | STAINLESS |
| ALUM | ALUMINUM |

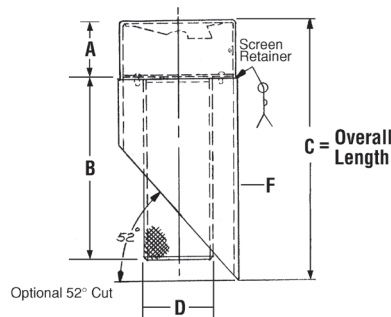
| |
|--------|
| SERIES |
| HDF |

| NECK LENGTHS | |
|--------------|---------|
| 1.3 | 1.3" |
| 603 | 3" |
| 606 | 6" |
| 608 | 8" |
| 6** | SPECIFY |

| OPTIONS | |
|-----------|------------------------------|
| OMIT | |
| 4.50 | 40 MESH SCREEN |
| 52° | ANGLE OF CUT (6" Minimum) |
| LCH | LESS CHAIN |
| 4.5 - 20M | 20 MESH SCREEN |

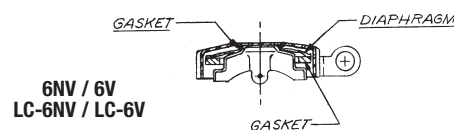


Diesel Neck
"HDF"

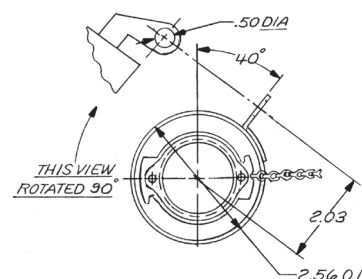


For side mounting on tank.

Diesel Caps



LC-Lock Drawing



LC-HDF-606-52-4.5
w/ LC-6V
LC-HDF-6

LC-HDF-603-4.5
W/ LC-6V



Cap Ordering Information

| MODEL | CAP DIAMETER | ANTI SLOSH DEFLECTOR | VENT | LOCK TAB | CHAIN HOOK | DIPSTICK |
|--------|--------------|----------------------|---------------|----------|------------|----------|
| 6V | 2.88 | YES | (2).040 HOLES | NO | OPTIONAL | OPTIONAL |
| LC-6V | 2.88 | YES | (2).040 HOLES | YES | OPTIONAL | OPTIONAL |
| 6NV | 2.88 | YES | NON-VENT | NO | OPTIONAL | OPTIONAL |
| LC-6NV | 2.88 | YES | NON-VENT | YES | OPTIONAL | OPTIONAL |

**Dipstick option minimum 25 pcs.*



LC-6V Cap only