

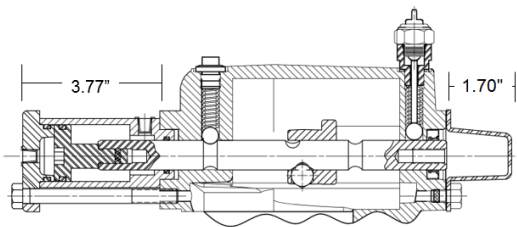
## NEW 823 Air Shifter for Eaton ECA Clearance

The Chelsea 823 Series PTO has a NEW low-profile, two-sided air shift assembly that eliminates interference with the EATON Electronic Clutch Actuator (ECA) assembly. The previous shifter used a single-sided shift assembly that controlled the engage and disengage operation. The new shifter splits the operation to two sides to mitigate interference with the ECA. The new style is still a double-acting operation. The new style shifter requires significant changes to the PTO housing and the new parts are not backward compatible.

There are no changes to the air shift option code and no price difference for the new style shifter.

### **OLD STYLE**

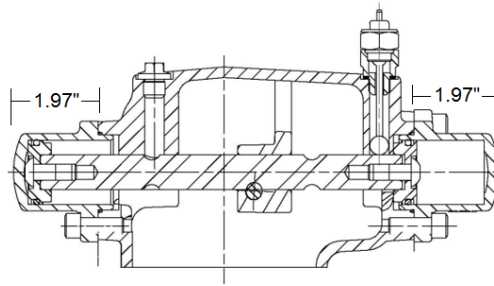
Ser. No. 8044\*\*\*\* and Prior



▪ Housing:		(1)
▪ 3 & 6 Arr.	1-P-323	
▪ 4 & 5 Arr.	1-P-324	
▪ Shifter Shaft	11-P-135	(1)
▪ Oil Seal	28-P-218	(1)
▪ Shifter Spring	37-P-51	(2)
▪ Shifter Ball	378002	(2)
▪ O-ring	28-P-61	(2)
▪ Air Cyl Gasket	22-P-113	(1)
▪ Air Cyl Body	65-P-29	(1)
▪ Shifter Piston	66-P-24	(1)
▪ Air Cyl Cap	379027	(1)
▪ Air Cap Fastener	378431-31	(2)
▪ O-ring (Cylinder)	28-P-198	(1)
▪ Dust Cap	65-P-31	(1)
▪ Dust Cap Gasket	35-P-99	(1)
▪ Dust Cap Fastener	378431-4	(2)

### **NEW STYLE**

Ser. No. 8045\*\*\*\* and Later



▪ Housing:		(1)
▪ 3 & 6 Arr.	1-P-784	
▪ 4 & 5 Arr.	1-P-785	
▪ Cylinder	65-P-57	(2)
▪ O-ring (Cyl to Hsg)	28-P-388	(2)
▪ O-ring (Piston)	28-P-241	(2)
▪ Piston	66-P-61	(2)
▪ Shifter Shaft	11-P-170	(1)
▪ Piston Fastener	380600	(2)
▪ Cap Fastener	379433-6	(4)
▪ Oil Seal (Lever Shift ONLY)	28-P-389	(1)

All P/Ns for the new shifter style are NEW P/Ns

If you have questions about this bulletin or other technical questions, contact us at:

#### **UNITED STATES**

Chelsea Products Division

888-PH4-TRUK (8785)

#### **EUROPE**

Parker Hannifin – Europe

+49 (0) 371 3937 157

Curtis Dalton  
Market Product Manager  
Chelsea Products Division  
Parker Hannifin Corporation