

Chelsea® 870 Series

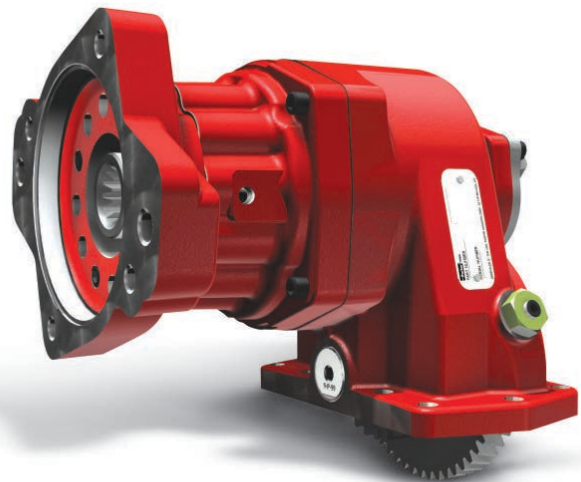
Ten Bolt PowerShift PTO



Overview:

Power density is what you will find in the Chelsea 870 Series PTO. The 870 Series has a 10-Bolt mounting pattern that will fit on today's popular automatic transmissions. Its compact housing eliminates clearance issues. Two assembly arrangements to maximize your installation possibilities. High capacity bearings and superior gear designs provide you with torque ratings up to 670 lbs-ft for ultimate performance. There is no need to de-rate the PTO for continuous duty applications. A single hose is required for a simplified installation. Our popular Electronic Overspeed Control (EOC) is also available to protect your driven equipment. Multiple gear ratios provide a wide variety of speeds to meet a variety of application requirements. Direct mount pump flange options are available with our Wet Spline design to increase PTO and pump shaft life. Versatility, power, ease of maintenance and installation make the 870 Series the only choice for your vocational truck requirements.

- Fire & Rescue
- Refuse
- Vacuum
- Oil & Gas
- Snow & Ice



Contact Information:

Parker Hannifin Corporation
Chelsea Products Division
8225 Hacks Cross Road
Olive Branch, MS 38654 USA

Phone: 1-888-PH4-TRUK
(1-888-744-8785)

Fax: 1-662-895-1069
chelseacustserv@parker.com

www.parker.com/chelsea

Product Features and Benefits:

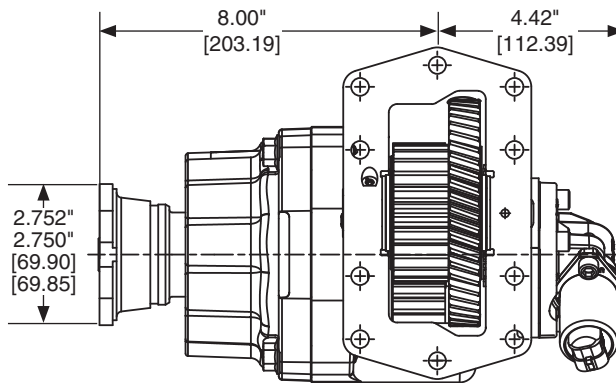
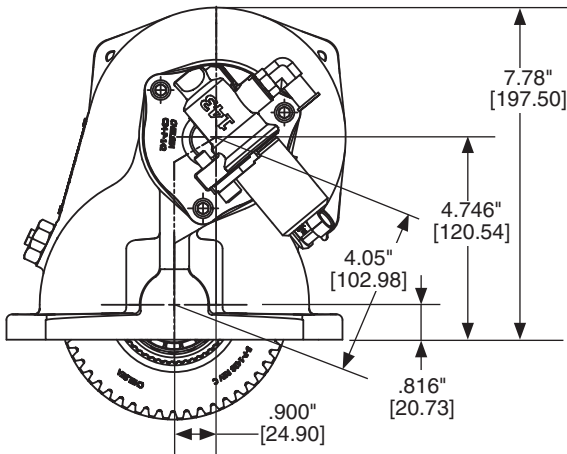
- **Power** – Torque capacity up to 670 lbs-ft / 908 Nm.
- **Compact** – Housing height reduces clearance issues.
- **Quiet** – Quiet Gear™ input option available.
- **Smart Start** – Option available to reduce shock load at start-up for certain applications.
- **Insurance** – Electronic Overspeed Control (EOC) protects driven equipment.
- **Speeds** – Nine speed ratios.
- **Outputs** – Thirteen output options.
- **Protection** – Wet Spline pump flange extends PTO and pump shaft life.



ENGINEERING YOUR SUCCESS.

870 SERIES POWER TAKE-OFF SPECIFICATIONS AND TECHNICAL DATA

Basic Model 870	870	X	A	FJ	P	-	B	5	XV
Mounting Option X = Standard Mount w/ Metric Studs									Output Option Driveline Output XV = 1410 Series Companion Flange AB = DIN 120 Flange AC = DIN 100 Flange BB = Shaft Brake - DIN 120 Flange BC = Shaft Brake - DIN 100 Flange BV = Shaft Brake - 1410 Series Companion Flange SB = Smart Start - DIN 120 Flange SC = Smart Start - DIN 100 Flange SV = Smart Start - 1410 Series Companion Flange Pump Mount 47 RF = Rotatable SAE B 2 or 4-Bolt Flange, SAE BB Shaft (1" - 15T) 47 RZ = Rotatable SAE B 2 or 4-Bolt Flange, SAE C Shaft (1-1/4" - 14T) 47 RS = Rotatable SAE C 2 or 4-Bolt Flange, SAE C Shaft (1-1/4" - 14T) 47 RY = Rotatable ISO 7653 Pump Mount DIN 5462 Shaft
Gear Ratio (Internal) A = 24/40 B = 25/39 C = 26/38 D = 27/37 E = 29/35 F = 31/33 G = 33/31 H = 34/30 J = 35/29									
Input Option FJ QT = Quiet Gear™ NOTE: For more details, see Application Catalog (Transmission model number required)									
Lube Option Pressure P = Pressure Lube R = Valve Body Rotated 120° S = Valve Body Rotated 240° Wet Spline 5 W = Wet Spline 5 V = Valve Body Rotated 120° w/ Wet Spline 5 Y = Valve Body Rotated 240° w/ Wet Spline 5 Automatically pressure lubed 47 Available with Wet Spline									Assembly Arrangement 3 = Right side - bulge down Left side - bulge up 5 = Left side - bulge down Right side - bulge up Shift Option B = 12V Elec/Hyd D = 24V Elec/Hyd E = 12V Elec/Hyd w/o Installation Kit N = 24V Elec/Hyd w/o Installation Kit K = 12V Elec/Hyd w/ EOC L = 24V Elec/Hyd w/ EOC G = 12V Elec/Hyd Valve w/o EOC - Remote H = 24V Elec/Hyd Valve w/o EOC - Remote



Specifications Chart	Approximate Weight: 56 lbs. [25 kg]								
	870*A	870*B	870*C	870*D	870*E	870*F	870*G	870*H	870*J
Continuous Torque Rating (lbs-ft) [Nm]	670 [908]	630 [854]	590 [800]	550 [746]	485 [658]	430 [583]	380 [515]	355 [481]	335 [454]
HP Rating for Continuous Duty									
At 500 RPM of Output Shaft (HP) [Kw]	64 [48]	60 [45]	56 [42]	52 [39]	46 [35]	41 [31]	36 [27]	34 [25]	32 [24]
At 1000 RPM of Output Shaft (HP) [Kw]	128 [95]	120 [90]	112 [84]	105 [78]	92 [69]	82 [61]	72 [54]	68 [51]	64 [48]

© 2019 Parker Hannifin Corporation

Supersedes HY25-0152-B1/US July 2018

HY25-0152-B1/US July 2019