

Chelsea® 877 Series

Ten Bolt Constant Mesh PTO



Overview:

Power density is what you will find in the Chelsea 877 Series PTO. The 877 Series has a 10-Bolt mounting pattern that will fit on today's popular automatic transmissions, like the Allison 3000/4000 Family. Its compact housing eliminates clearance issues. Two assembly arrangements maximize installation possibilities. High capacity bearings and superior gear designs deliver torque ratings up to 670 lbs-ft for ultimate performance. There is no need to de-rate the PTO for continuous duty applications. A single hose is required for a simplified installation. Multiple gear ratios offer a wide variety of speeds to meet a variety of application requirements. Direct mount pump flange options are available with our Wet Spline technology to increase PTO and pump shaft life. Versatility, power, ease of maintenance and installation make the 877 Series the only choice for your vocational truck requirements.

- Fire & Rescue
- Refuse
- Vacuum
- Snow & Ice
- Blower & Vacuum



Contact Information:

Parker Hannifin Corporation
Chelsea Products Division
8225 Hacks Cross Road
Olive Branch, MS 38654 USA

Phone: 1-888-PH4-TRUK
(1-888-744-8785)

Fax: 1-662-895-1069
chelseacustserv@parker.com

www.parker.com/chelsea

Product Features and Benefits:

- **Power** – Torque capacity up to 670 lbs-ft / 908 Nm
- **Compact** – Housing height reduces clearance issues
- **Speeds** – Ten speed ratios
- **Outputs** – Seven output options
- **Protection** – Wet Spline pump flange extends PTO and pump shaft life



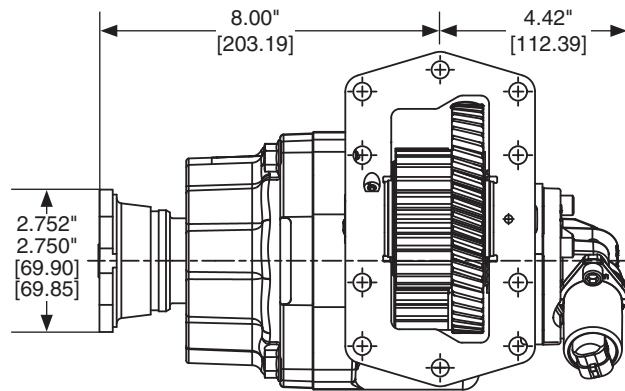
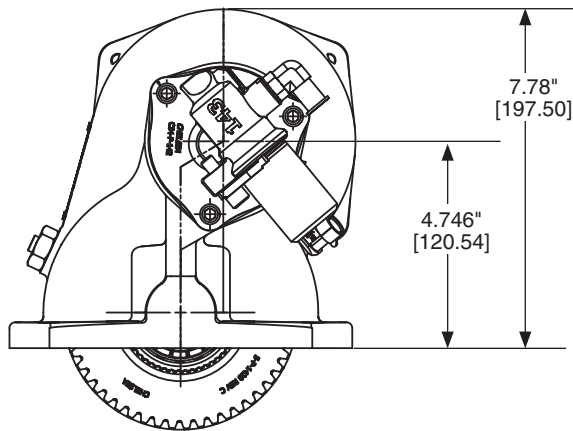
ENGINEERING YOUR SUCCESS.

877 SERIES POWER TAKE-OFF SPECIFICATIONS AND TECHNICAL DATA

Basic Model 877	877	X	A	FJ	P	-	M	5	XV	Output Option
Mounting Option X = Standard Mount w/ Metric Studs										Driveline Output
Gear Ratio (Internal) A = 24/40 B = 25/39 C = 26/38 D = 27/37 E = 29/35 F = 31/33 K = 32/32 G = 33/31 H = 34/30 J = 35/29										XV = 1410 Series Companion Flange AB = DIN 120 Flange AC = DIN 100 Flange
Input Option FJ = Allison NOTE: For more details, see Application Catalog (Transmission Model Number required)										Pump Mount
Lube Option Pressure P = Pressure Lube Wet Spline ⁵ W = Wet Spline										⁴⁷ RF = Rotatable SAE B 2 or 4-Bolt Flange, SAE BB Shaft (1" - 15T) ⁴⁷ RZ = Rotatable SAE B 2 or 4-Bolt Flange, SAE C Shaft (1-1/4" - 14T) ⁴⁷ RS = Rotatable SAE C 2 or 4-Bolt Flange, SAE C Shaft (1-1/4" - 14T) ⁴⁷ RY = Rotatable ISO 7653 Pump Mount DIN 5462 Shaft
										Assembly Arrangement
										3 = Right side - bulge down Left side - bulge up 5 = Left side - bulge down Right side - bulge up
										Shift Option M = Constant Mesh

⁵ Automatically pressure lubed

⁴⁷ Available with Wet Spline



Specifications Chart										Approximate Weight: 56 lbs. [25 kg]
	877*A	877*B	877*C	877*D	877*E	877*F	877*K	877*G	877*H	877*J
Continuous Torque Rating (lbs-ft) [Nm]	670 [908]	630 [854]	590 [800]	550 [746]	485 [658]	430 [583]	357 [484]	380 [515]	355 [481]	335 [454]
HP Rating for Continuous Duty										
At 500 RPM of Output Shaft (HP) [Kw]	64 [48]	60 [45]	56 [42]	52 [39]	46 [35]	41 [31]	34 [25]	36 [27]	34 [25]	32 [24]
At 1000 RPM of Output Shaft (HP) [Kw]	128 [95]	120 [90]	112 [84]	105 [78]	92 [69]	82 [61]	68 [51]	72 [54]	68 [51]	64 [48]

© 2018 Parker Hannifin Corporation

Supersedes HY25-0153-B1/US September 2017

HY25-0153-B1/US July 2018