



CONV-APS-1



CONV-UNI-4



CONV-APS-7

## CONSOLES

Features and Benefits:

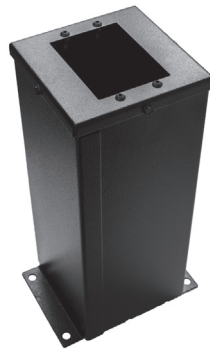
- Private Label Available
- Standard consoles available covering all typical applications
- Stainless lid provides a clean consistent professional finish
- Screen printed verbiage provides user-friendly, safe application
- Supplied pre-plumbed and assembled - reducing installation time and costs

PART#	APPLICAITON	H	W	L	HOIST	T.G. LATCH	AUX	AUX 2	P.T.O.	QUAD PLOW CONTROL	STROBE	PLOW LIGHT	BRAKE BAND	CLUTCH CONTROL	WINCH IN / OUT	WORK LIGHT	SPEED FAST / SLOW	ROTARY SWITCH OPENING
CONV-UNI-4	Dump	14"	12"	8"	Y	Y	O	O	Y	Y	Y	Y	N	N	N	N	N	N
CONV-APS-1	Winch	14"	8"	7"	N	N	N	N	Y	N	Y	N	Y	Y	Y	Y	Y	N
CONV-APS-5	Winch	13"	6"	6"	N	N	N	N	Y	N	N	N	Y	Y	N	N	N	N
CONV-APS-7	Dump	13"	6"	6"	Y	Y	N	N	Y	N	N	N	N	N	N	N	N	Y

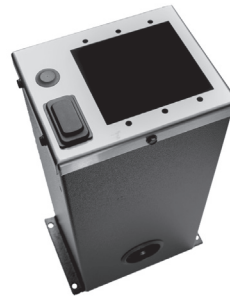
# VM CONSOLES



CONB-1-S



CONB-2



CONB-3R

PART#	CONSOLE ACCOMIDATES	HEIGHT	WIDTH	LENGTH
CONB-1-S	(1) x VM-7	13"	4.56"	5.25"
CONB-1-S8	(1) x VM-7	8"	4.56"	5.25"
CONB-1-R	(1) x VM-7, (1) VR-9-S (rocker)	13"	5.25"	5.25"
CONB-2	(2) x VM-7	13"	5.25"	5.25"
CONB-2-R	(2) x VM-7, (1) VR-9-S (rocker)	14"	7.25"	6.75"
CONB-3-R	(3) x VM-7, (1) VR-9-S (rocker)	14"	7.25"	6.75"
CONB-4	(4) Bank VM-7	14"	8"	7"
CONB-Q	(1) x VM-10	13"	5.25"	5.25"
4648	BLANK		4.299"	4.313"
4464	SPACER			

Should you not find what you are looking for, contact us at (918) 622-5600  
 Visit [www.apscopower.com](http://www.apscopower.com) for installation instructions and dimensional drawings