

# Chelsea® 941 Series

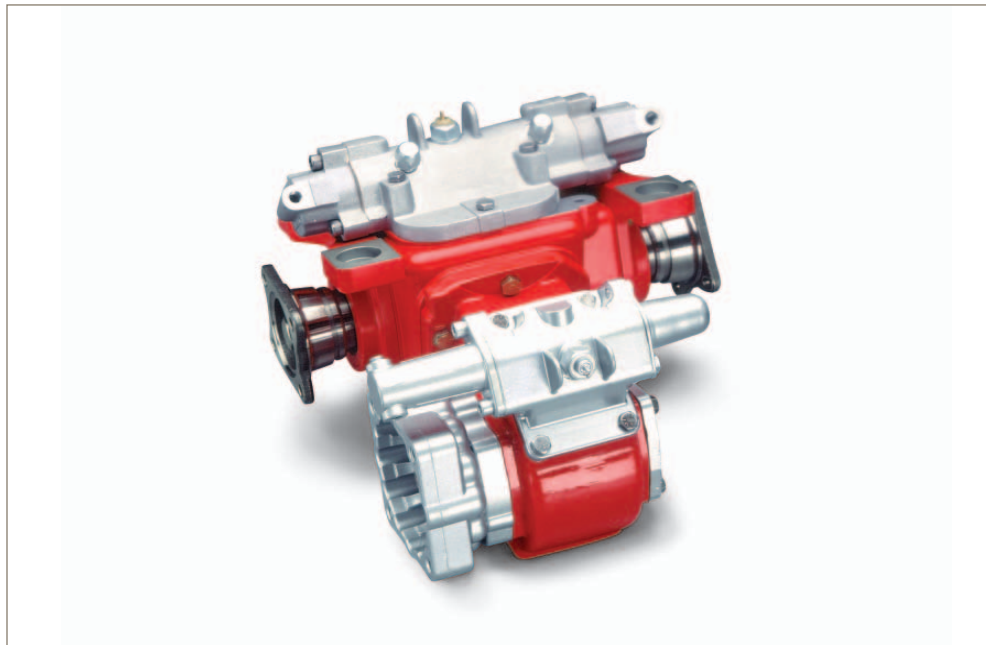
Split Shaft P.T.O.



## Overview:

The 941 Split Shaft is designed specifically for the Class 3 through 6 trucks with automatic transmissions and one or no P.T.O. openings on the transmission. This is a smaller version of our popular 912 Series. The 941 features two 6-Bolt openings allowing a variety of Chelsea P.T.O.s to be mounted. This unit is an excellent choice when you need to operate more than one piece of driven equipment. This unit can be lever or air shifted. It features three input output options offering 1410 or 1500 series flanges attached to the unit or a no flange option.

- Pumper Cleaner
- Fire and Rescue
- Tire Service Vehicles



## Product Features and Benefits:

### Contact Information:

Parker Hannifin Corporation  
**Chelsea Products Division**  
8225 Hacks Cross Road  
Olive Branch, MS 38654 USA

**Phone: 1-888-PH4-TRUK**  
**(1-888-744-8785)**

**Fax: 1-662-895-1069**  
**chelseacustserv@parker.com**

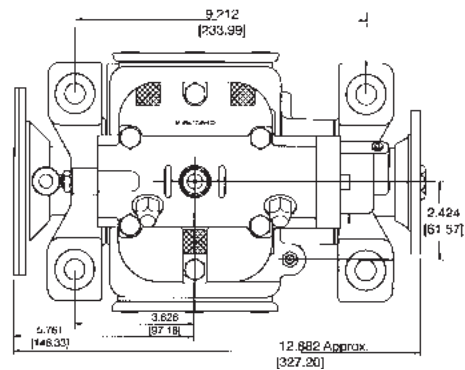
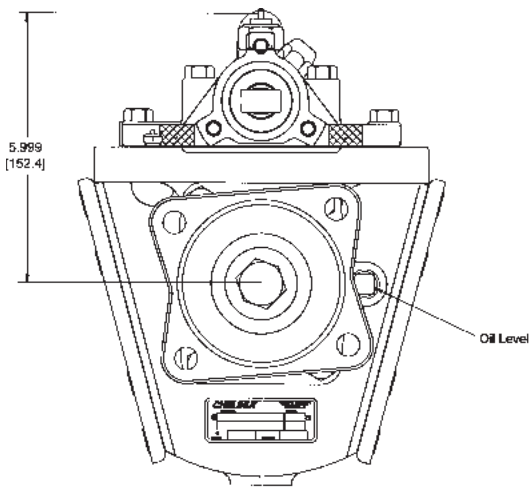
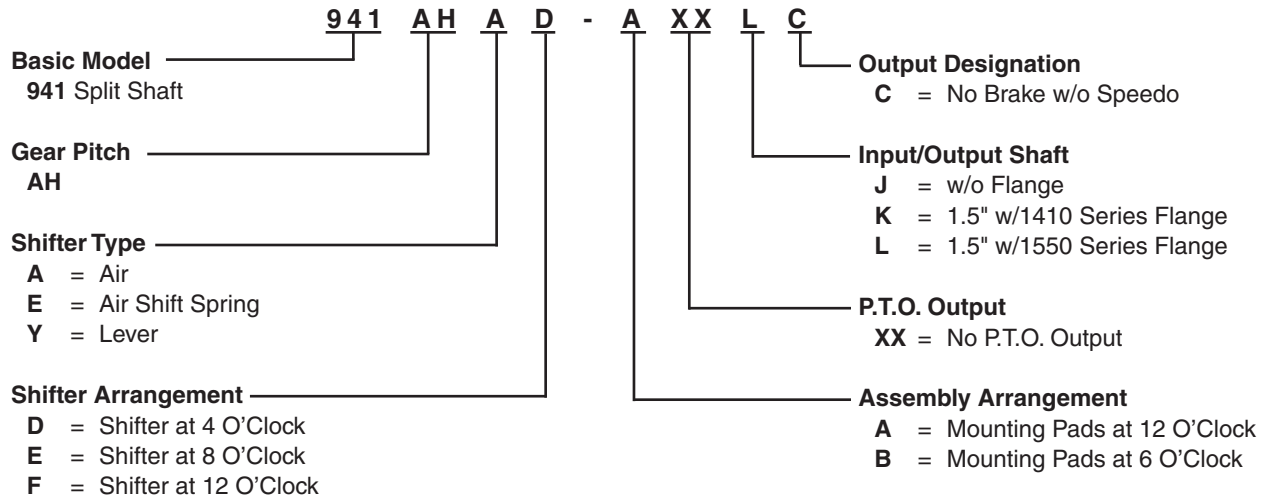
[www.parker.com/chelsea](http://www.parker.com/chelsea)

- Smaller version of the 912 Series with two 6-Bolt openings
- Several 6-Bolt and Reversible P.T.O.s will fit on the 941 Series
- Designed for Class 3, 4, 5 and 6 trucks with automatic transmissions and no P.T.O. opening or trucks requiring additional P.T.O. openings



ENGINEERING YOUR SUCCESS.

# Model Number Designator



## Specifications Chart – 941 Series

<b>941</b>		
Standard Output Shaft Size	1-1/2" 12 Spline	
Max Thru Torque Capacity	Lbs. ft	Nm
w/ Diesel Engine		
Automatic Transmission	3,100	4,203
Manual Transmission	2,900	3,932
w/ Gas Engine		
Automatic Transmission	4,200	5,694
Manual Transmission	3,900	5,288
Approximate Weight:	60 lbs. [27 kg]	

