



Chelsea® Power Take-Offs

Quick Reference Guide – 2017



WARNING — User Responsibility

FAILURE OR IMPROPER SELECTION OR IMPROPER USE OF THE PRODUCTS DESCRIBED HEREIN OR RELATED ITEMS CAN CAUSE DEATH, PERSONAL INJURY AND PROPERTY DAMAGE.

This document and other information from Parker Hannifin Corporation, its subsidiaries and authorized distributors provide product or system options for further investigation by users having technical expertise.

The user, through its own analysis and testing, is solely responsible for making the final selection of the system and components and assuring that all performance, endurance, maintenance, safety and warning requirements of the application are met. The user must analyze all aspects of the application, follow applicable industry standards, and follow the information concerning the product in the current product catalog and in any other materials provided from Parker or its subsidiaries or authorized distributors.

To the extent that Parker or its subsidiaries or authorized distributors provide component or system options based upon data or specifications provided by the user, the user is responsible for determining that such data and specifications are suitable and sufficient for all applications and reasonably foreseeable uses of the components or systems.

Offer of Sale

The items described in this document are hereby offered for sale by Parker Hannifin Corporation, its subsidiaries or its authorized distributors. This offer and its acceptance are governed by the provisions stated in the “Offer of Sale”.

Patent Information

The Chelsea® Power Take-Off or its components shipped with this owner's manual may be manufactured under one or more of the following U.S. patents:

4610175	5228355	4597301	5645363
6151975	6142274	6260682	7159701 B2
690450 B2	7510064	9494227 B2	

Other patents pending.

© Copyright 2017, Parker Hannifin Corporation,
All Rights Reserved

Table of Contents

6-Bolt

221 Series, 252 Series, 272 Series	1
290 Series, 340 Series, 352 Series	2
442 Series, 447 Series, 660 Series	3

8-Bolt

282 Series, 348 Series, 489 Series	4
680 Series, 823 Series, 852 Series	5
863 Series, 880 Series, 885 Series	6

10-Bolt

267 Series, 280 Series, 287 Series	7
870 Series, 877 Series, 890/892 Series	8
897/899 Series	9

Rear Mount

511 Series, 523 Series	9
541 Series, 560V Series, 590 Series	10

PTO Application Worksheet	11-12
--	-------

CAT-D Series, CAT-H Series	13
----------------------------------	----

Ford

247 Series	13
249 Series, 249V Series, 272F	14

Front Mount

2442 Series	15
-------------------	----

Split Shaft

901 Series, 912 Series	15
941 Series	16

Geared Adapters

626 Series, 628 Series,	16
630 Series, 645 Series	17
PTO Application Guidelines	18-20
Troubleshooting	21
Formulas & Abbreviations	22

For more information regarding Chelsea PTOs or Applications, please contact Chelsea Customer Service/Technical Service at 888-PH4-TRUK.

**6
Bolt**

221 Series

Intermittent Torque Rating

Up to 250 lbs-ft
[339 Nm]



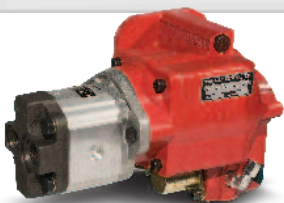
- Mechanical
- 48 HP [36 Kw] at 1000 RPM
- 30 Lbs. [13.6 kg]

**6
Bolt**

252 Series

Intermittent Torque Rating

Up to 120 lbs-ft
[163 Nm]



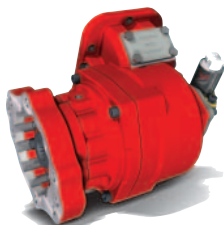
- PowerShift (Hydraulic)
- 23 HP [17 Kw] at 1000 RPM
- 25 Lbs. [11 kg]



272 Series

Continuous Torque Rating

Up to 300 lbs-ft
[407 Nm]



- PowerShift (Air or Hydraulic)
- 54 HP [43 Kw] at 1000 RPM
- 49 Lbs. [22 kg]
- 272F - Ford TorqueShift6® Transmission (Released March 2017)

Consult Chelsea Application Catalog HY25-3000/US for specific applications.

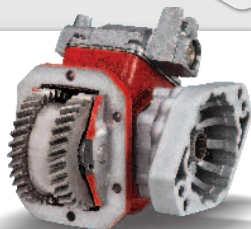
290 Series

Intermittent Torque Rating

Up to 175 lbs-ft
[237 Nm]

**6
Bolt**

- Mechanical
- 33 HP [25 Kw] at 1000 RPM
- 37 Lbs. [16.8 kg]



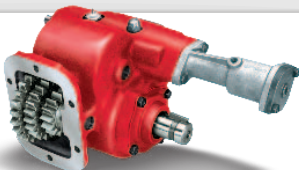
340 Series

Intermittent Torque Rating

Up to 200 lbs-ft
[271 Nm]

**6
Bolt**

- Mechanical
(Reversible)
- 38 HP [28 Kw] at 1000 RPM
- 32 Lbs. [15 kg]



352 Series

Intermittent Torque Rating

Up to 140 lbs-ft
[190 Nm]

**6
Bolt**

- Mechanical
(Reversible)
- 27 HP [20 Kw] at 1000 RPM
- 37 Lbs. [17 kg]



Consult Chelsea Application Catalog HY25-3000/US for specific applications.

ENGINEERING YOUR SUCCESS.

**6
Bolt**

442 Series

Intermittent Torque Rating

Up to 250 lbs-ft
[339 Nm]



- Mechanical
- 48 HP [36 Kw] at 1000 RPM
- 21 Lbs. [9.5 kg]

**6
Bolt**

447 Series

Intermittent Torque Rating

Up to 225 lbs-ft
[305 Nm]



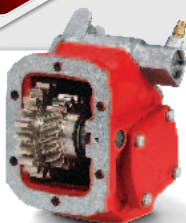
- Mechanical
- 43 HP [32 Kw] at 1000 RPM
- 21 Lbs. [9.5 kg]

**6
Bolt**

660 Series

Intermittent Torque Rating

Up to 375 lbs-ft
[508 Nm]



- Mechanical
- 71 HP [53 Kw] at 1000 RPM
- 28.2 Lbs. [12.8 kg]

Consult Chelsea Application Catalog HY25-3000/US for specific applications.

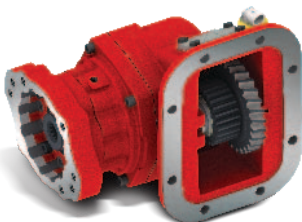
282 Series



Continuous Torque Rating

Up to 300 lbs-ft
[407 Nm]

- PowerShift
(Air or Hydraulic)
- 57 HP [43 Kw]
at 1000 RPM
- 49 Lbs. [22 kg]



348 Series

Intermittent Torque Rating

Up to 200 lbs-ft
[271 Nm]

8 Bolt

- Mechanical
(Reversible)
- 38 HP [28 Kw] at
1000 RPM
- 32 Lbs. [15 kg]



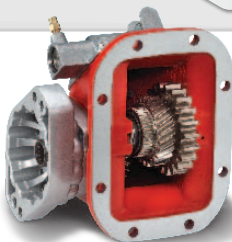
489 Series

Intermittent Torque Rating

Up to 250 lbs-ft
[339 Nm]

8 Bolt

- Mechanical
- 48 HP [36 Kw] at
1000 RPM
- 30 Lbs. [13.6 kg]



Consult Chelsea Application Catalog HY25-3000/US for specific applications.

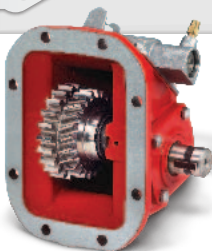
ENGINEERING YOUR SUCCESS.

**8
Bolt**

680 Series

Intermittent Torque Rating

Up to 375 lbs-ft
[508 Nm]



- Mechanical
- 71 HP [53 Kw] at 1000 RPM
- 28.2 Lbs. [12.8 kg]

**8
Bolt**

823 Series

Intermittent Torque Rating

Up to 750 lbs-ft
[919 Nm]



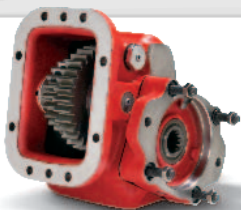
- Mechanical
- 142 HP [105 Kw] at 1000 RPM
- 76 Lbs. [34.5 kg]

**8
Bolt**

852 Series

Intermittent Torque Rating

Up to 500 lbs-ft
[678 Nm]



- PowerShift (Hydraulic)
- 95 HP [71 Kw] at 1000 RPM
- 88 Lbs. [40 kg]

Consult Chelsea Application Catalog HY25-3000/US for specific applications.

863 Series

Intermittent Torque Rating

Up to 500 lbs-ft
[678 Nm]

**8
Bolt**

- Reversible
- 95 HP [71 Kw] at 1000 RPM
- 96 Lbs. [44 kg]



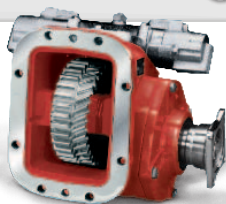
880 Series

Intermittent Torque Rating

Up to 500 lbs-ft
[678 Nm]

**8
Bolt**

- Mechanical
- 95 HP [71 Kw] at 1000 RPM
- 63 Lbs. [28.6 kg]



885 Series

Intermittent Torque Rating

Up to 500 lbs-ft
[678 Nm]

**8
Bolt**

- PowerShift (Air)
- 95 HP [71 Kw] at 1000 RPM
- 88 Lbs. [40 kg]



Consult Chelsea Application Catalog HY25-3000/US for specific applications.

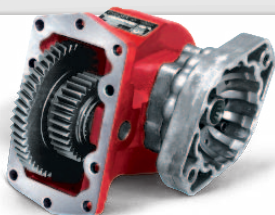
ENGINEERING YOUR SUCCESS.

**10
Bolt**

267 Series

Intermittent Torque Rating

Up to 335 lbs-ft
[454 Nm]



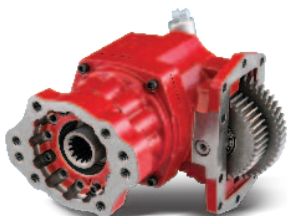
- Constant Mesh
- 64 HP [48 Kw] at 1000 RPM
- 35 Lbs. [16 kg]

**10
Bolt**

280 Series

Continuous Torque Rating

Up to 390 lbs-ft
[529 Nm]



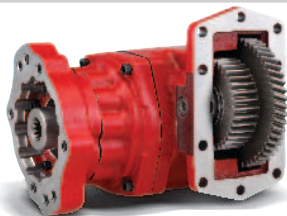
- PowerShift (Hydraulic)
- 74 HP [56 Kw] at 1000 RPM
- 49 Lbs. [22 kg]

**10
Bolt**

287 Series

Continuous Torque Rating

Up to 390 lbs-ft
[529 Nm]



- Constant Mesh
- 74 HP [56 Kw] at 1000 RPM
- 44 Lbs. [20 kg]

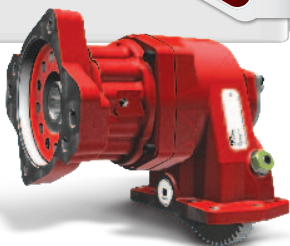
Consult Chelsea Application Catalog HY25-3000/US for specific applications.

870 Series

Continuous Torque Rating

Up to 670 lbs-ft
[908 Nm]

- Powershift (Hydraulic)
- 128 HP [95 Kw] at 1000 RPM
- 56 Lbs. [25 kg]



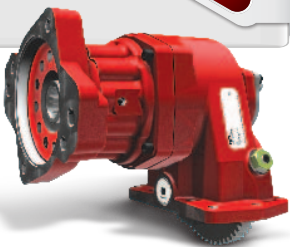
10 Bolt

877 Series

Continuous Torque Rating

Up to 670 lbs-ft
[908 Nm]

- Constant Mesh
- 128 HP [95 Kw] at 1000 RPM
- 48 Lbs. [22 kg]



10 Bolt

890/892 Series

Continuous Torque Rating

Up to 670 lbs-ft
[908 Nm]

- PowerShift (Hydraulic)
- 128 HP [95 Kw] at 1000 RPM
- 97 Lbs. [44 kg]



10 Bolt

Consult Chelsea Application Catalog HY25-3000/US for specific applications.

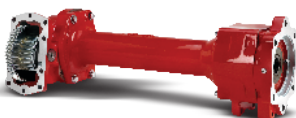
ENGINEERING YOUR SUCCESS.

10 Bolt

897/899 Series

Continuous Torque Rating

Up to 670 lbs-ft
[908 Nm]



- Constant Mesh
- 128 HP [95 Kw] at 1000 RPM
- 86 Lbs. [39 kg]

Rear Mount

511 Series

Continuous Torque Rating

Up to 590 lbs-ft
[800 Nm]



- Mechanical
- 112 HP [84 Kw] at 1000 RPM
- 4.2 Lbs. [1.9 kg]

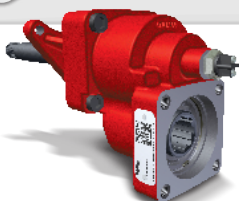
NOTE: Available for Eaton, Mack, Volvo, ZF, Iveco. Check catalog for other offerings.

Rear Mount

523 Series

Continuous Torque Rating

Up to 258 lbs-ft
[350 Nm]



- Mechanical
- 49 HP [37 Kw] at 1000 RPM
- 12 Lbs. [5.4 kg]

NOTE: Available for Eaton, Mack, Volvo, ZF, Iveco. Check catalog for other offerings.

Consult Chelsea Application Catalog HY25-3000/US for specific applications.

541 Series

Intermittent Torque Rating

Up to 400 lbs-ft
[542 Nm]

**Rear
Mount**

- Mechanical
- 76 HP [57 Kw] at 1000 RPM
- 37 Lbs. [17 kg]



560V Series

Continuous Torque Rating

Up to 650 lbs-ft
[881 Nm]

**Rear
Mount**

- PowerShift (Hydraulic)
- Integrated Vane Pump
- 64 HP [48 Kw] at 1000 RPM
- 71 Lbs. [32.2 kg]



590 Series

Continuous Torque Rating

Up to 650 lbs-ft
[881 Nm]

**Rear
Mount**

- PowerShift (Hydraulic)
- 124 HP [93 Kw] at 1000 RPM
- 50 Lbs. [22.8 kg]



Consult Chelsea Application Catalog HY25-3000/US for specific applications.

ENGINEERING YOUR SUCCESS.

PTO Application Work Sheet

INFORMATION FROM CUSTOMER:

A. Make and model of transmission.

B. Type of driven equipment.

C. Input horsepower required for driven equipment.

D. Operating speed of driven equipment.

E. Desired engine speed during operation.

-or-

PTO Ratio (if known)

F. From items C and D, determine the torque requirement of the driven equipment using this formula: $\frac{HP \times 5252}{RPM} = \text{lbs-ft.}$

RPM

For continuous operation divide by .7

(Torque \div .70) to get torque requirement for driven equipment.

G. Direction of driven equipment shaft rotation when equipment is mounted on vehicle.

H. Reverse gear requirements.

Yes_____ No_____

I. Type and size of PTO output required.
(i.e. driveshaft, direct mount pump).

USE HY25-3000/US CHELSEA APPLICATION CATALOG:

Steps to specifying proper PTO:

1. Application page number.

2. Select the proper PTO type (i.e. Mechanical, PowerShift, etc.).

3. Using the Application page number from step 1, find PTOs that meet or exceed the torque requirements of the application.

4. From that list, pick the unit that comes closest to satisfying the rotation and speed percentage for the application.

5. Note the PTO model number and all other kits required on the line to the right.

6. Determine what options are needed and change model number designators to obtain correct options (Shifter, Output, etc.).

CAUTION: It is very important to read all notes at the bottom of the Application Page. The notes contain warnings and/or special parts that need to be considered for that PTO application.

NOTE: Intermittent – Operating less than 5 minutes in a given 15 minute period of time.

Continuous – Operating longer than 5 minutes in a given 15 minute period of time.

Consult Chelsea Application Catalog HY25-3000/US for specific applications.

ENGINEERING YOUR SUCCESS.

**Rear
Mount**

CAT-D Series

Continuous Torque Rating

Up to 800 lbs-ft
[1085 Nm]



- Direct Drive
- 152 HP [114 Kw] at 1000 RPM
- 8.2 Lbs. [3.7 kg]

NOTE: CAT CX28 & CX31 Transmissions

**Rear
Mount**

CAT-H Series

Continuous Torque Rating

Up to 335 lbs-ft
[454 Nm]



- PowerShift (Hydraulic)
- 64 HP [48 Kw] at 1000 RPM
- 42.5 Lbs. [19.3 kg]

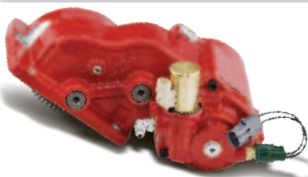
NOTE: CAT CX28 & CX31 Transmissions

Ford

247 Series

Intermittent Torque Rating

Up to 120 lbs-ft
[163 Nm]



- PowerShift (Hydraulic)
- 42 HP [32 Kw] at 1848 RPM
- 20 Lbs. [9 kg]

NOTE: Ford 5R110 Transmission

Consult Chelsea Application Catalog HY25-3000/US for specific applications.

249 Series

Intermittent Torque Rating

Up to 200 lbs-ft
[271 Nm]

Ford

- PowerShift
(Hydraulic)
- 57 HP [42 Kw] at
1488 RPM
- 27 Lbs. [11 kg]



NOTE: Ford 6R140 Transmission
Patent #9,494,227 B2

249V Series

Intermittent Torque Rating

Up to 200 lbs-ft
[271 Nm]



- PowerShift
(Hydraulic)
- 57 HP [42 Kw] at
1488 RPM
- 53 Lbs. [9 kg]



NOTE: Ford 6R140 Transmission
Patent #9,494,227 B2

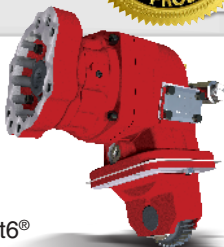
272 Series – Ford

Intermittent Torque Rating

Up to 300 lbs-ft
[407 Nm]



- PowerShift
(Hydraulic)
- *40 HP [30 Kw] at
1000 RPM
- 55 Lbs. [25 kg]
- 272F - Ford TorqueShift6®
Transmission



Consult Chelsea Application Catalog HY25-3000/US for specific applications.

*See Ford Body Builders for transmission operation specifications.

ENGINEERING YOUR SUCCESS.

Front Mount

2442 Series

Intermittent Torque Rating

Up to 250 lbs-ft
[339 Nm]



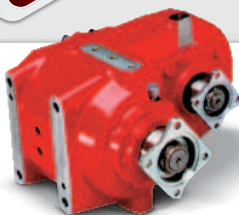
- Mechanical
- 48 HP [36 Kw] at 1000 RPM
- 69 Lbs. [31 kg]

Split Shaft

901 Series

Intermittent Torque Rating

Up to 500 lbs-ft
[678 Nm]



- Mechanical
- Four output options
- 185 Lbs. [84 kg]

Split Shaft

912 Series

Intermittent Torque Rating

Up to 16,000 lbs-ft Thru-torque
[21,693 Nm]



- Mechanical
- Three 8-Bolt PTO openings
- 130 Lbs. [59 kg]

Consult Chelsea Application Catalog HY25-3000/US for specific applications.

941 Series

Intermittent Torque Rating

Up to 4,200 lbs-ft Thru-torque
[5,694 Nm]

**Split
Shaft**

- Mechanical
- Three 6-Bolt PTO openings
- 60 Lbs. [27 kg]



626 Series

Intermittent Torque Rating

Torque rating same as PTO
in application.

**Geared
Adapter**

- 6-Bolt-to-6-Bolt SAE
- Moves PTO directly away from trans.
- 1:1 Ratio with the PTO



628 Series

Intermittent Torque Rating

Torque rating same as PTO
in application.

**Geared
Adapter**

- 6-Bolt-to-8-Bolt SAE
- Moves PTO directly away from trans.
- 1:1 Ratio with the PTO



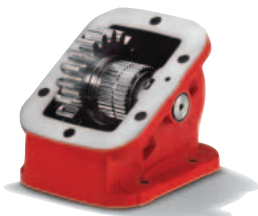
Consult Chelsea Application Catalog HY25-3000/US for specific applications.

ENGINEERING YOUR SUCCESS.

**Geared
Adapter**

630 Series

Intermittent Torque Rating
Torque rating same as PTO
in application.



- 6-Bolt-to-6-Bolt SAE
- Moves PTO away from trans. at a 30 degree angle.
- 1:1 Ratio with the PTO

**Geared
Adapter**

645 Series

Intermittent Torque Rating
Torque rating same as PTO
in application.



- 6-Bolt-to-6-Bolt SAE
- Moves PTO away from trans. at a 45 degree angle.
- 1:1 Ratio with the PTO

Consult Chelsea Application Catalog HY25-3000/US for specific applications.

Chelsea PTO Application Guidelines

Application	PTO %	PTO Type (see legend)	Torque Rating (lb-ft)	Comment
Blower (bulk transfer trailer)	150+	b, g, h, k, l, m, n, o	275+	Use HD 6 or 8-bolt only. See Chelsea Blower Guide. Possible Smart Start Application. Continuous Duty
Bucket Truck	100	b, c, d, e, f, g, h, o, p	175	Direct Mount pumps; many are Press Comp systems
Bulk feed body or Trailer	100-125	b, g, h, k, l, m, n, o	250+	Continuous Duty
Car hauler	100-125	b, c, d, e, g, h, k, l, m, n, o	140+	This a multi-car trailer, not a rollback/wrecker.
Chemical sprayers	100-125	b, c, d, e, g, h, k, l, m, n, o	140+	Standard units are ok, hot shifts are preferred.
Compressor (Mech)	100+	b, c, d, e, g, h, k, l, m, n, o	175+	Use PTO with standard output shaft or companion flange. High-Torque Start-Up. Possible Smart Start Application
Compressor (Hydraulic)	100+	b, c, d, e, g, h, k, l, m, n, o	140+	Hyd. motor will probably come with compressor
Crane	100+	b, c, d, e, g, h, k, l, m, n, o	140+	Many types available, use caution.
Dump Trailer/Walking Floor combo	100-125	b, g, k, l, m, n, o	200+	Do not use plastic reservoir or dump pump. Too much heat for plastic tanks. Systems require more pressure than standard dump pumps.
Dump Body (small)	75-110	g, h, k, l, m, n, o	125	
Dump Truck or Trailer	95-120	b, g, h, k, l, m, n, o	175+	May require 3-Line system to include filter and recirculation line if using for asphalt.
Fire Truck (pump)	125+	g, h, k, l, m, n, o	200+	Continuous Duty. Possible Smart Start Application.
Fifth Wheel (hydraulic)	90-110	b, c, d, e, f, g, h, o	165+	Is the application a yard spotter?

Chelsea PTO Application Guidelines

Application	PTO %	PTO Type (see legend)	Torque Rating (lb-ft)	Comment
Fuel/Oil Delivery tanker	75-95	a, b, c, d, e, g, h	140+	Possible 452 series application; Propane delivery may require a shaft brake.
Generator	100+	a, b, c, d, e, g, h	140+	Could be mechanical or hydraulic drive; Could be high torque if used on shredder trucks. Possible Smart Start Application.
Low Boy Trailer	100-125	b, g, k, l, m, n, o	140+	There are many types, be careful; get all details; some units use a winch.
Product Pump (mech)	65-85	b, g, k, l, m, n, o	140+	Do not exceed 90%
Product Pump (Hyd)	100-125	b, g, k, l, m, n, o	175+	Continuous Duty
Refuse	100-110	g, h, m, p	250+	Front loaders, rear loaders and automated systems.
Roll-Offs	100-125	b, g, k, l, m, n, o	175+	Refuse container truck
Vacuum Truck	100+	b, h, k, l, m, n, o	175+	Continuous Duty; Sewer/septic trucks
Walking Floor	100-125	b, h, k, l, m, n, o	200+	Do not use poly reservoir or dump pump.
Wrecker (small)	100-125	b, c, d, e, g, h	120-200	One ton chassis F550 or equiv; wheel lift or rollback.
Wrecker (medium)	100-125	b, g, h, k, l, m, n, o	175+	All hydraulic including winch.
Wrecker (large)	100-125	b, g, h, k, l, m, n, o	200+	Class 8 chassis

NOTE: Torque rating (above) refers to the minimum “intermittent” PTO torque shown in the catalog.

The information on this sheet is ONLY suggestive and is not intended to be an absolute and comprehensive source for determining the necessary PTO. There is more information required to make an informed decision as to the proper PTO for each application. It is the responsibility of the system designer and/or truck upfitter to determine the proper PTO.

See next page for Legend.

Legend/PTO Type

- a** = 221, 442 Series – Light Duty
- b** = 221, 260, 290, 442, 447, 489 Series – Two gear standard PTO; Medium Duty
- c** = 247, 249, 249V Series – Special hot shift PTOs for Ford Super Duty automatic; Light Duty
- d** = 272 Series – Medium Duty hot shift for automatic transmissions
- e** = 252 Series – Special hot shift for Allison 1000-2000; Light Duty
- f** = 267 Series – Non-shiftable; Special for Allison World Transmission; Medium Duty
- g** = 272, 282 Series – PowerShift; Medium to Heavy Duty
272 6-Bolt; 282 8-Bolt
- h** = 280 Series – Allison World Transmission; PowerShift; Heavy Duty
- i** = 340, 348, 352, 863 Series – 1 forward 1 reverse
- k** = 511, 523, 541 Series – Countershaft type; Medium to Heavy Duty
- l** = 880 Series – Heavy Duty
- m** = 852, 870, 885, 890 Series – Extra Heavy Duty hot shifts; 890 is an extended shaft PTO.
- n** = 880, 823 Series – 8-Bolt standard PTO; Extra Heavy Duty
- o** = 660, 680 Series – Heavy Duty 6-Bolt; 680 8-Bolt opening.
- p** = 877, 897 Series – Non-shiftable; Special for Allison 3000 and 4000 Series; Extra Heavy Duty

Troubleshooting

Noisy PTO

1. **Improper number of gaskets** – Correct as outlined under PTO “Installation.”
2. **Gears worn and pitted** – Replace worn gears. Check application to ensure PTO is properly spec'd for torque requirement.
3. **Bearing worn, due to high loads or chips** – Reduce load – Replace worn and rough bearings and races. Change oil.

Jumping Out of Gear

1. **Shift rail poppet spring broken** – Replace poppet spring.
2. **Shift rail poppet notch worn** – Replace shift rail.
3. **Shift fork spring or loose on shift rail** – Replace spring fork or tighten set screw in shift fork.
4. **Gear teeth worn** – Replace worn gears.
5. **Gears not shifted fully in mesh** – Check shift linkage for proper adjustments.
6. **Shift linkage too short** – Adjust linkage to permit full shift.

PowerShift PTO Won't Engage

1. **Incorrect high pressure line plumbing** – Correct plumbing as shown on installation instructions included with PTO.
2. **Incorrect electrical wiring** – Correct wiring as shown on wiring diagram in installation instructions included with PTO.
3. **Restriction in pressure line** – Check hose and fittings for obstructions.

Oil Leakage

1. **Oil seal failure** – Replace worn seal.
2. **Broken gasket** – Replace gaskets.
3. **Crack or hole in housing** – Replace housing.

General

Before disassembling Power Take-Offs, carefully note the arrangement of the gears, output shaft, shift rod and fork.

Useful Formulas
Pump Output Horsepower: $HP = GPM \times PSI \div 1714$
Pump Input Horsepower: $HP = GPM \times PSI \div (1714 \times E)$
Pump Input Torque (Lbs-ft): $T = CID \times PSI \div 75.36$
Gallons Per Minute: $GPM = CID \times RPM \div 231$
Cubic Inch Displacement: $CID = GPM \times 231 \div RPM$
Horsepower: $HP = T \times RPM \div 5252$
Flow in GPM using PTO: $GPM = (Engine\ RPM \times PTO\ \%) \times (CIR \div 231) \times E$
CCM Conversion: $CCM = CID \times 16.39$
CID Conversion: $CID = CCM \times .06102$

Abbreviations
HP = Horsepower
GPM = Gallons Per Minute
CID = Cubic Inch Displacement
CCM = Cubic Centimeter Displacement
PSI = Pounds per Square Inch
RPM = Revolutions Per Minute
E = Efficiency
T = Torque

NOTES

[illegible]

NOTES

[illegible]

Parker Hannifin Corporation

Chelsea Products Division

8225 Hacks Cross Road

Olive Branch, Mississippi 38654 USA

www.parker.com/chelsea

www.phtruck.com/chelsea

Supersedes HY25-0175-B1/US
February 2017

HY25-0175-B1/US
HW 1M April 2017

