

ACCESS COVERS

BAFFLE MOUNT — STEEL AND STAINLESS STEEL

Access Covers (Cleanout Covers) are designed to allow access into a dry (drained) reservoir for cleaning, inspection or mounting of components inside of the reservoir.

Standard Features:

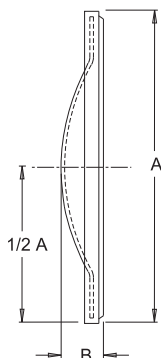
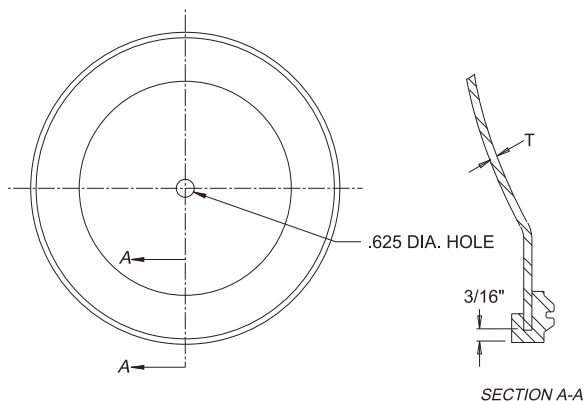
- Center clearance hole for mounting bolt
- With or without drain connection
- Buna N lip gasket
- Reference Spec Sheet for Access Cover kits that includes the mounting hardware

Standard Materials:

- Carbon Steel
- 304 Stainless Steel

NOTE:

- Recommended Torque = 15 ft-lb

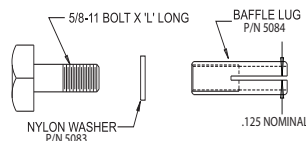


Carbon Steel



304 Stainless Steel

NOTE: All dimensions are inches



Access Covers: Baffle Mount - Steel

Access Cover Size (inches)	*Kit w/o Drain Part No.	*Kit with 3/4 inch NPT Drain Part No.	†Cover Only w/o Drain Part No.	†Cover Only with Drain Part No.	*Kit with SAE-12 Drain Part No.	†Cover Only with SAE-12 Drain Part No.
10	5067	5068	5070	5072	5053-D	5053
12	5080	5080-D	5085	5086-D	5054-D	5054
14	5065	5066	5071	5073	5055-D	5055
16	5087	5087-D	5089	5090-D	5056-D	5056
18	5091	5091-D	5095	5094-D	5057-D	5057

Access Covers: Baffle Mount - Stainless Steel

Access Cover Size (inches)	*Kit w/o Drain Part No.	*Kit with 3/4 inch NPT Drain Part No.	†Cover Only w/o Drain Part No.	†Cover Only with Drain Part No.
10	5067-SS	5067-D-SS	5070-SS	5072-D-SS
12	5080-SS	5080-D-SS	5085-SS	5085-D-SS
14	5065-SS	5065-D-SS	5071-SS	5071-D-SS
16	5087-SS	5087-D-SS	5089-SS	5089-D-SS
18	5091-SS	5091-D-SS	5095-SS	5095-D-SS

Access Cover Dimensions (inches)

Access Cover Size	A	*B	T	H L	Access Hole Dia.
10	10.75	1.50	11 GA	1.25	8
12	12.62	1.00	7 GA	1.75	10
14	14.62	1.81	7 GA	1.75	12
16	16.62	2.25	7 GA	2.00	14
18	18.62	2.62	7 GA	2.50	16

* All "B" dimensions are reference only

*NOTE: Access Cover Kit includes - (1) access cover, (1) Buna N gasket, (1) 5/8-11 bolt, (1) Nylon washer, (1) baffle lug

†NOTE: Access Cover only includes - (1) access cover, (1) Buna N gasket

Dimensions and specifications are subject to change without notice. Not all items are Made-To-Stock, contact us for availability.

02/14

Ph : 920-682-6877
Fx : 920-684-7210



sales@ldi-industries.com
www.ldi-industries.com

ACCESS COVERS

6 INCH ACCESS COVER

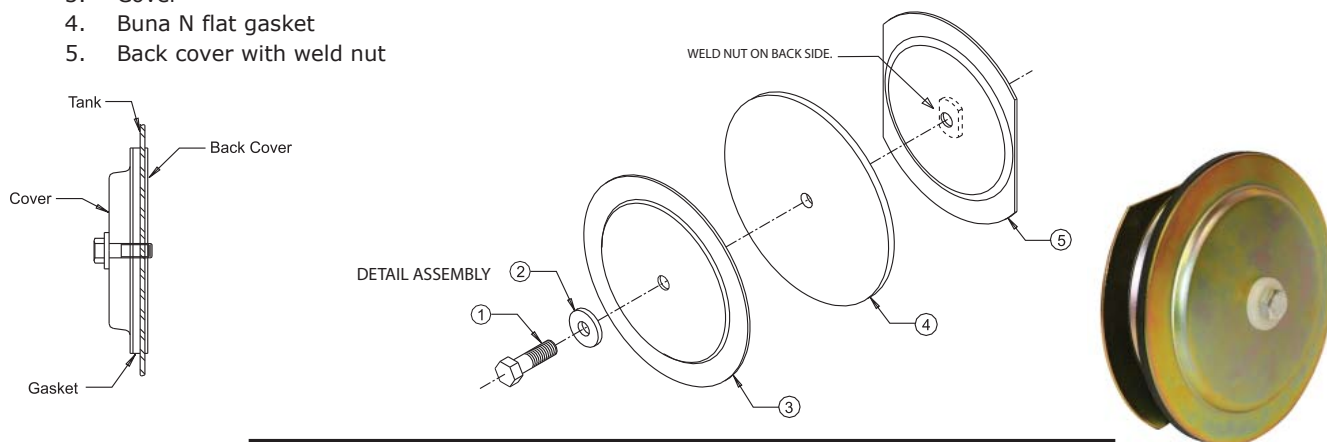
Access Covers (Cleanout Covers) are designed to allow access into a dry (drained) reservoir for cleaning, inspection or mounting of components inside of the reservoir.

Standard Features:

1. (1) 3/8 inch x 1-1/14 inch long hex head bolt
2. (1) Nylon washer
3. Cover
4. Buna N flat gasket
5. Back cover with weld nut

Standard Material:

- Zinc plated carbon steel



6 Inch Access Cover		
Part No.	Opening Diameter (inches)	Recommended Torque (ft.-lbs)
V1917	4 5/8	15

BAFFLE MOUNT — STEEL W/ FLOW RESTRICTORS

Access Covers (Cleanout Covers) with flow restrictors are designed to help prevent hydraulic fluid from by-passing the baffle cutout by flowing around the cover dome. It will also allow access into a dry (drained) reservoir for cleaning, inspection or mounting of components inside of the reservoir.

Standard Features:

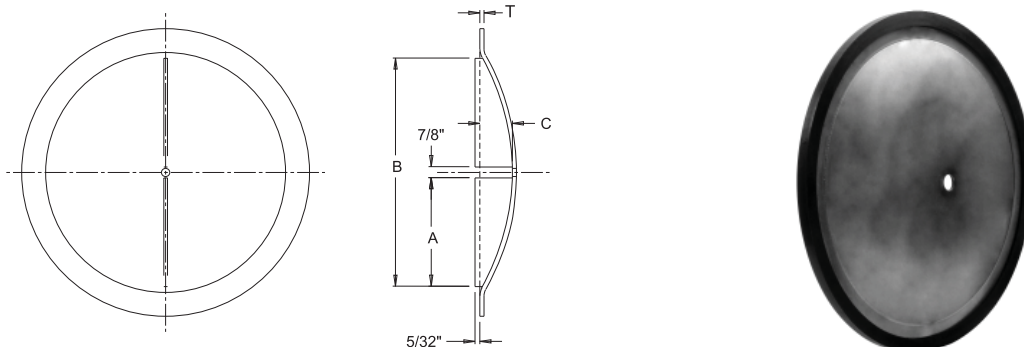
- Center clearance hole for mounting bolt
- One piece design
- With or without drain connection
- Buna N lip gasket

Standard Material:

- Carbon Steel

NOTES:

- Stainless steel also available upon request
- Recommended Torque = 15 ft-lb



NOTE: All dimensions are inches

Access Cover Size (inches)	Dimensions				Access Cover Openings (inches)	Steel Access Cover w/Restrictor w/Drain Part No.	Steel Access Cover w/Restrictor w/o Drain Part No.	Steel Access Cover w/Restrictor w/SAE-12 Drain Part No.
	A (inches)	B (inches)	C (inches)	T				
12	4.50	9.88	1.50	7 GA	10.00	5080-R	50800-R	50540
14	5.00	11.88	1.50	7 GA	12.00	5065-R	5066-R	50550
16	5.62	12.12	1.75	7 GA	12.25	5087-R	50870-R	50560
18	7.50	15.88	2.25	7 GA	16.00	5091-R	50910-R	50570

Dimensions and specifications are subject to change without notice. Not all items are Made-To-Stock, contact us for availability.

02/14

Ph : 920-682-6877
Fx : 920-684-7210



sales@ldi-industries.com
www.ldi-industries.com

ACCESS COVERS

BRACKET MOUNTS - STEEL

Bracket Mounted Access Covers (Cleanout Covers) are removable and designed to be used when a baffle is unavailable to mount the cover and when access to inside of reservoir is required. This allows access into a dry (drained) reservoir for cleaning, inspection or mounting of components inside of the reservoir with full access through the opening in the reservoir.

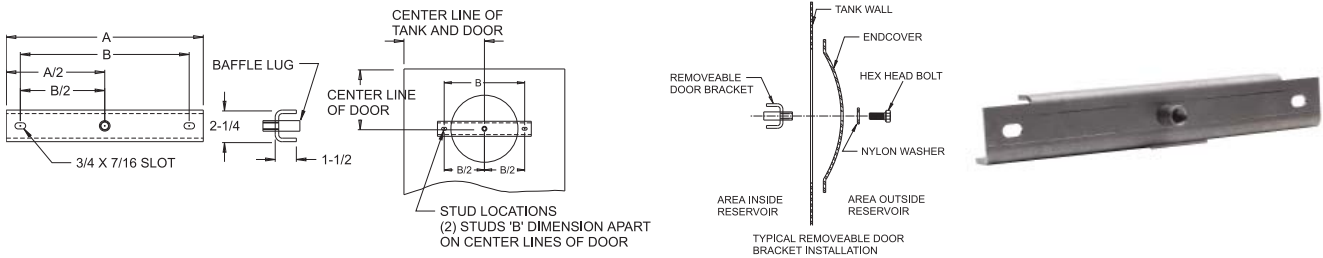
Standard Features:

- Spider bracket mounted kits are available in two sizes with different options
- A removable bracket style is available
- Quick and easy installation

Standard Material:

- Carbon Steel

REMOVABLE ACCESS COVER BRACKET



NOTE: All dimensions are inches

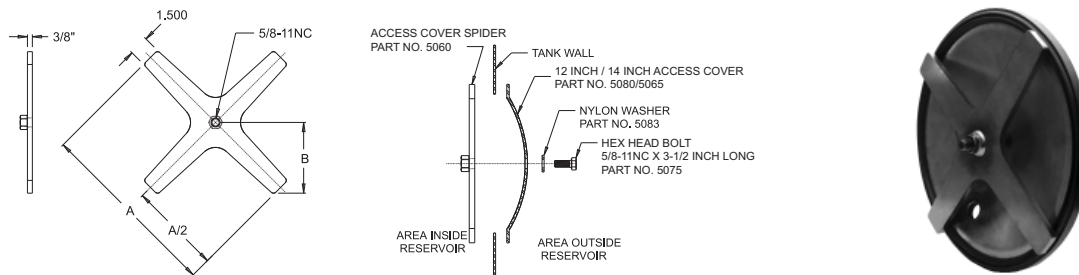
Removable Access Cover Brackets

Access Cover Dia (inches)	Access Hole Diameter (inches)	Part No.	A (inches)	A/2 (inches)	B (inches)	B/2 (inches)
10	8	V-5393	12.00	6.00	10.00	5.00
12	10	V-5392	14.00	7.00	12.00	6.00
14 / 16	12 / 12.25	V-5390	16.25	8.12	14.25	7.12
18	16	V-5391	20.00	10.00	18.00	9.00

Each Removable Access Cover Bracket includes:

- (1) Removable Access Cover Bracket
- *(2) Studs 3/8 inch x 3/4 inch long
- *(2) 3/8 inch hex nuts
- *(2) lockwashers
- *When installed by LDI

REMOVABLE ACCESS COVER WITH SPIDER



NOTE: All dimensions are inches

NOTE: Recommended Torque = 15 ft-lb

Removable Access Cover With Spider

Access Cover Description	Access Hole Diameter (inches)	Part No.	A (inches)	A/2 (inches)	B (inches)
12 inch w/no drain	10	5060-12-S	14.00	7.00	5.31
14 inch w/no drain	12	5060-14-S	14.00	7.00	5.31
12 inch w/ 3/4 inch NPT Drain	10	5060-12-N-S	14.00	7.00	5.31
14 inch w/ 3/4 inch NPT Drain	12	5060-14-N-S	14.00	7.00	5.31
12 inch w/SAE-12 Drain	10	5060-12-S-S	14.00	7.00	5.31
14 inch w/SAE-12 Drain	12	5060-14-S-S	14.00	7.00	5.31

Available as kit only

- Each kit includes:**
- (1) access cover with gasket
 - (1) removable access cover spider
 - (1) hex head bolt
 - (1) Nylon washer

Dimensions and specifications are subject to change without notice. Not all items are Made-To-Stock, contact us for availability.

07/15

Ph : 920-682-6877
Fx : 920-684-7210



sales@ldi-industries.com
www.ldi-industries.com

ACCESS COVERS

CAST BOLT MOUNT — DIN TYPE

DIN Type access covers (Cleanout Covers) are designed to allow access into a dry (drained) reservoir for cleaning, inspection or mounting of components inside of the reservoir.

Standard Features:

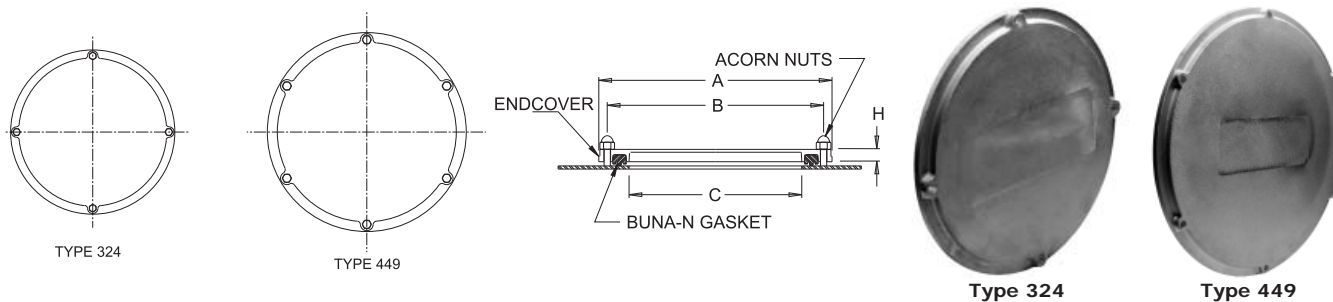
- Multi-bolt mounting for positive sealing
- Available in two sizes
- Does not require a baffle for mounting
- Buna N gasket

Standard Material:

- Cast Aluminum

NOTES:

- Recommended Torque = 35 in-lb



Access Covers: Cast Bolt Mount - DIN Type

Access Cover Type	*Access Cover Kit No. For All Parts	M10 Acorn Nut Part No.	DIN Type Access Cover Gaskets (Buna N) Part No.	DIN Type Access Cover Part No.	A Dia inches (mm)	B BC inches (mm)	C Cutout inches (mm)	H inches (mm)
324	136699	108499	V-6701	DIN324	13.78 (350)	12.75 (324)	9.76 (248)	.70 (18)
449	136799	108499	V-6702	DIN449	18.70 (475)	17.68 (449)	15.08 (383)	.70 (18)

*NOTE: Access cover kit includes- (1) DIN type door, (1) Buna N gasket, (4) or (6) acorn nuts. Access cover includes (1) DIN type door and (1) Buna N gasket

MULTIPLE BOLT ACCESS COVERS

Multiple Bolt Access Cover (Cleanout Cover) are designed to allow access into a dry (drained) reservoir for cleaning, inspection or mounting of components inside of the reservoir.

Standard Features:

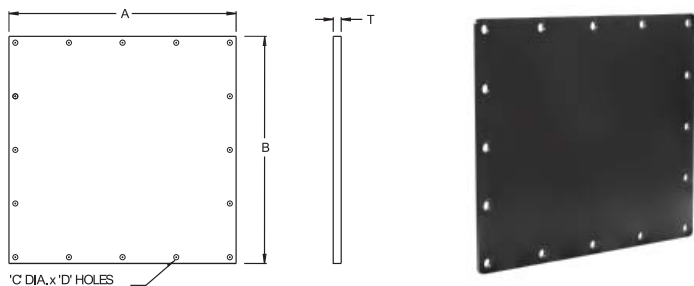
- Multi-bolt mounting bolts for positive sealing
- Larger access hole in the reservoir
- Available in different sizes
- Does not require a baffle for mounting

Standard Material:

- Carbon Steel

NOTES:

- Recommended Torque = 25 ft-lb



Multiple Bolt Access Cover

Access Cover Size (inches)	Access Hole Size (inches)	Part No.	A (inches)	B (inches)	C (inches)	Qty D	T	Buna N Basket Part No.
18x18	16x16	5334	18.00	18.00	.44	16	.25	5335
12x14	10x12	5283	14.00	12.00	.44	16	.25	5079
24x24	20x20	5338	24.00	24.00	.44	24	.25	5339

Dimensions and specifications are subject to change without notice. Not all items are Made-To-Stock, contact us for availability.

02/14

Ph : 920-682-6877
Fx : 920-684-7210



sales@ldi-industries.com
www.ldi-industries.com