

- CV** Check Valves
- SH** Shuttle Valves
- LM** Load/Motor Controls
- FC** Flow Controls
- PC** Pressure Controls
- LE** Logic Elements
- DC** Directional Controls
- MV** Manual Valves
- SV** Solenoid Valves
- PV** Proportional Valves
- CE** Coils & Electronics
- BC** Bodies & Cavities
- TD** Technical Data

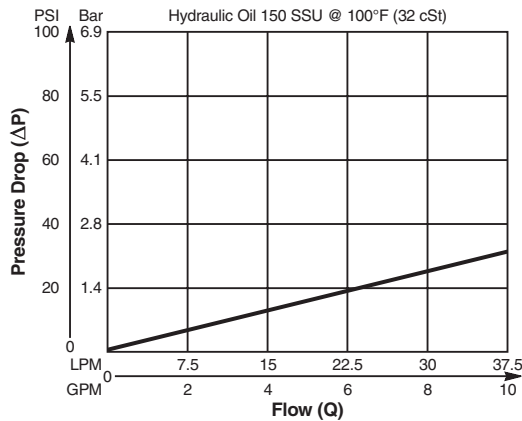
### Valve/Cavity Compatibility

For additional information see Technical Tips on pages BC1-BC6.

CAVITY	VALVE				
	Winner's Circle	Parker	Waterman	FPS	CEC
Winner's Circle	X	X	X	X	X
Parker	X	X	X	X	X
Waterman	X	X	X	X	X
FPS	X	X	X	X	X
CEC	X	X	X	X	X

### Performance Curve

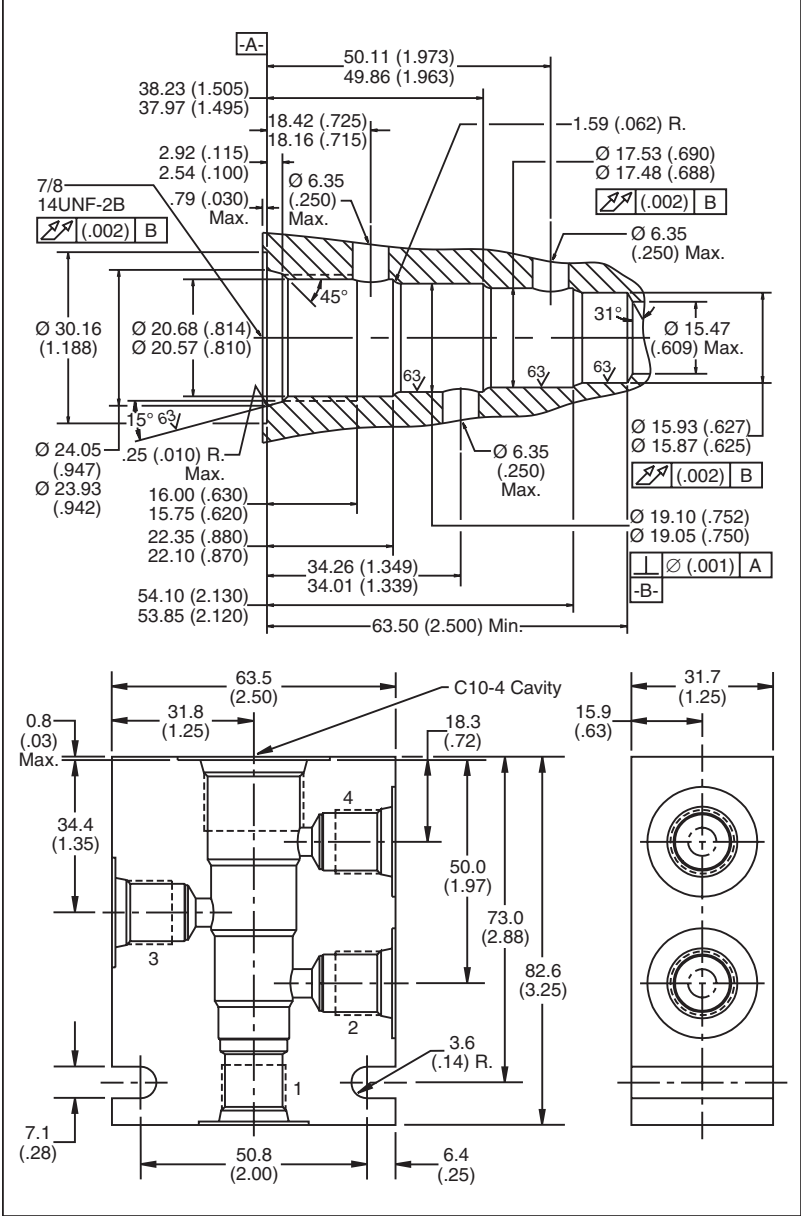
#### Pressure Drop vs. Flow



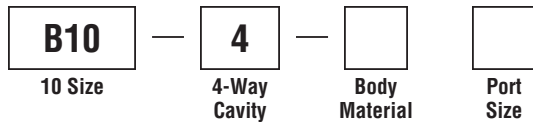
**NOTE:**

When machining for use with DF102P, Ports 1 and 4 must be connected in the manifold/block.

### Dimensions



### Ordering Information



Code	Body Material
Omit	Steel
A	Aluminum

Code	Port Size
6P	3/8" NPTF
6T	SAE - 6
8T	SAE - 8
6B†	3/8" BSPG

† Steel body only.

**Form Tool:** Rougher NFT10-4R  
 Finisher NFT10-4F  
**Weight:** .90 kg (2.0 lbs.)