

4

3

2

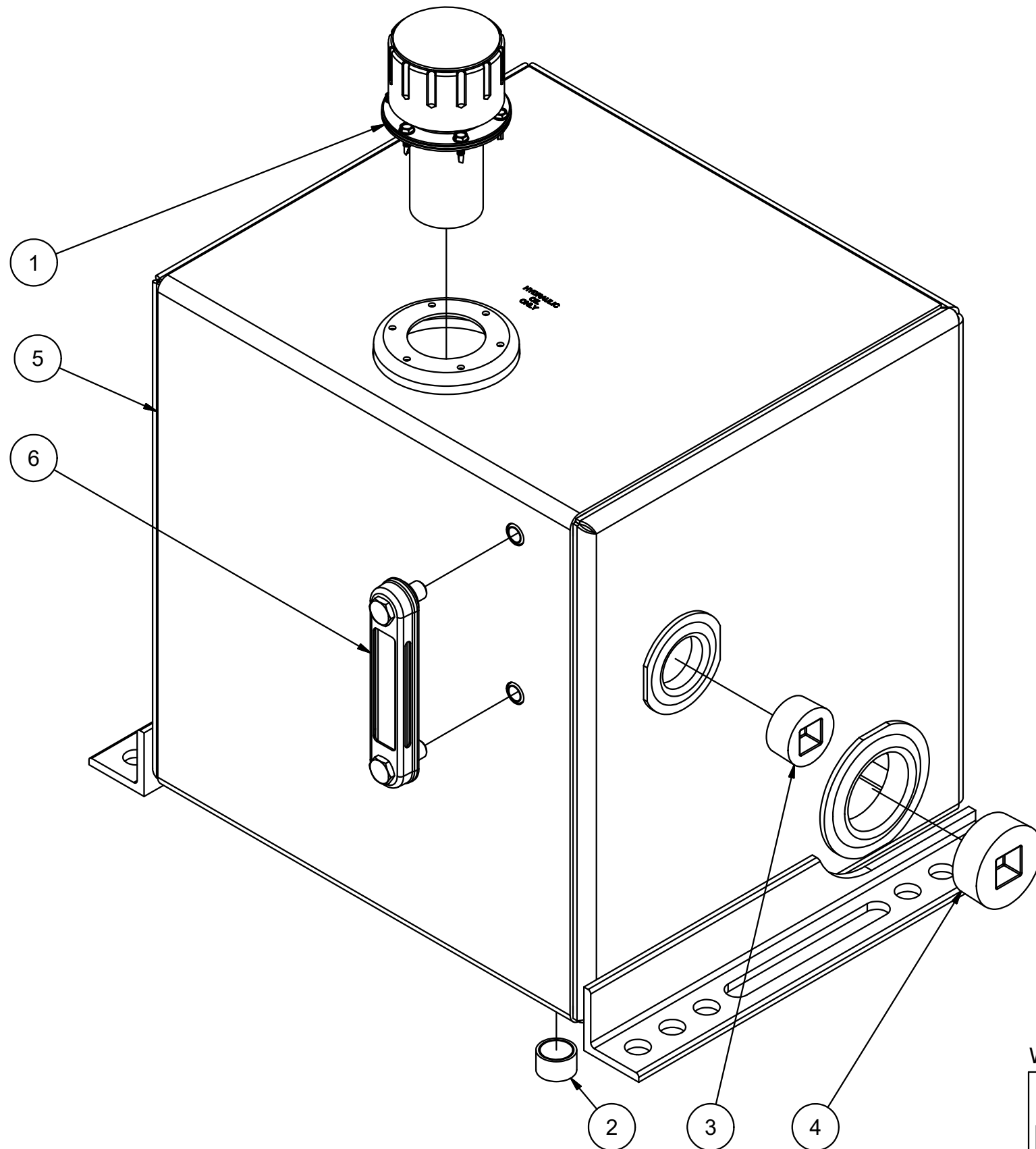
1

Parts List

ITEM	QTY	PART NUMBER	DESCRIPTION
1	1	57XL-40	40 Micron FILL w/30 Mesh Stainless Strainer
2	1	APP0750-M	3/4" NPT MAG PLUG
3	1	APP1250	1 1/4" NPT SQUARE SOCKET PLUG
4	1	APP2000	2" NPT SQUARE SOCKET PLUG
5	1	N_A3150BE	NAM WELDMENT ~56.3 lbs
6	1	T-LLG-5	SIGHT/TEMP. GAUGE, 5"

NOTES:

- POWDER COAT BLACK
- APPLY RUST INHIBITOR INSIDE
- PLUG ALL PORTS FOR SHIPMENT



WT: ~57.84 lbmass

<b>AMERICAN MOBILE POWER</b> PH: (800) 634-8265 FAX: (765) 948-3403	DRAWING BY: BPKNIGHT	DESIGN FOR: AMP	FILE NAME: A3150BE	
	COMPLETED: 3/29/2017		SHEET: 1 of 7	SHEET SIZE: B

4

3

2

1

B

B

A

A

4

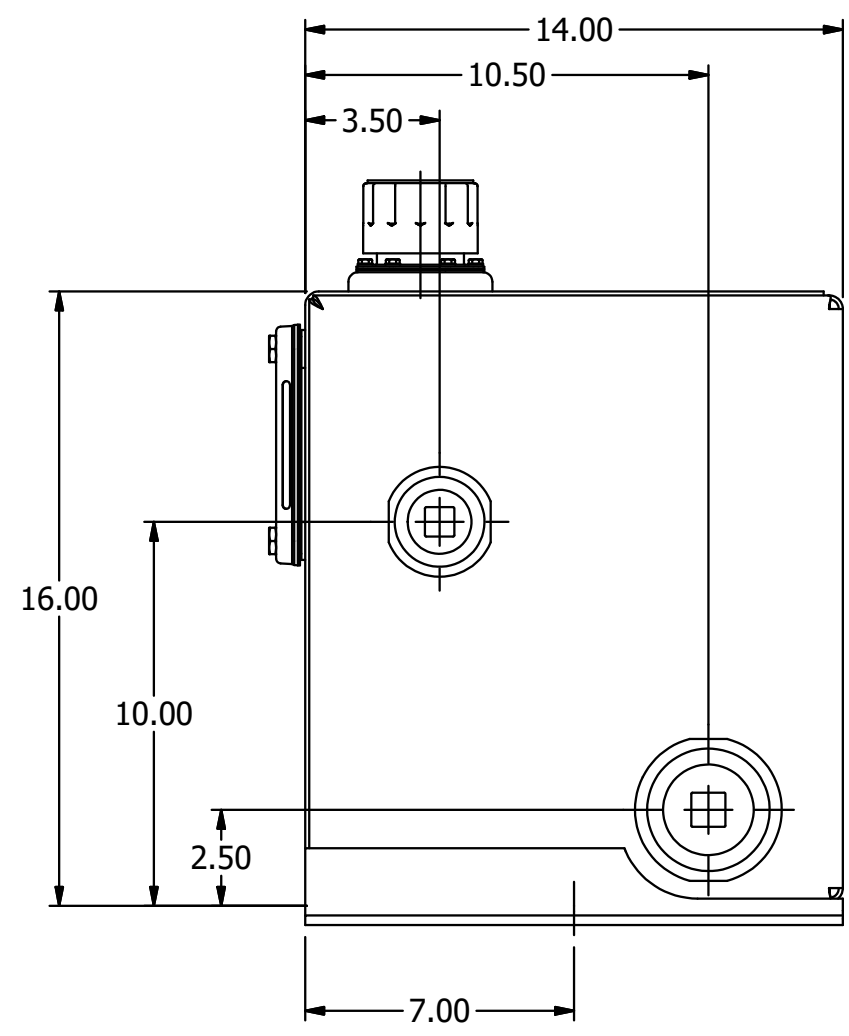
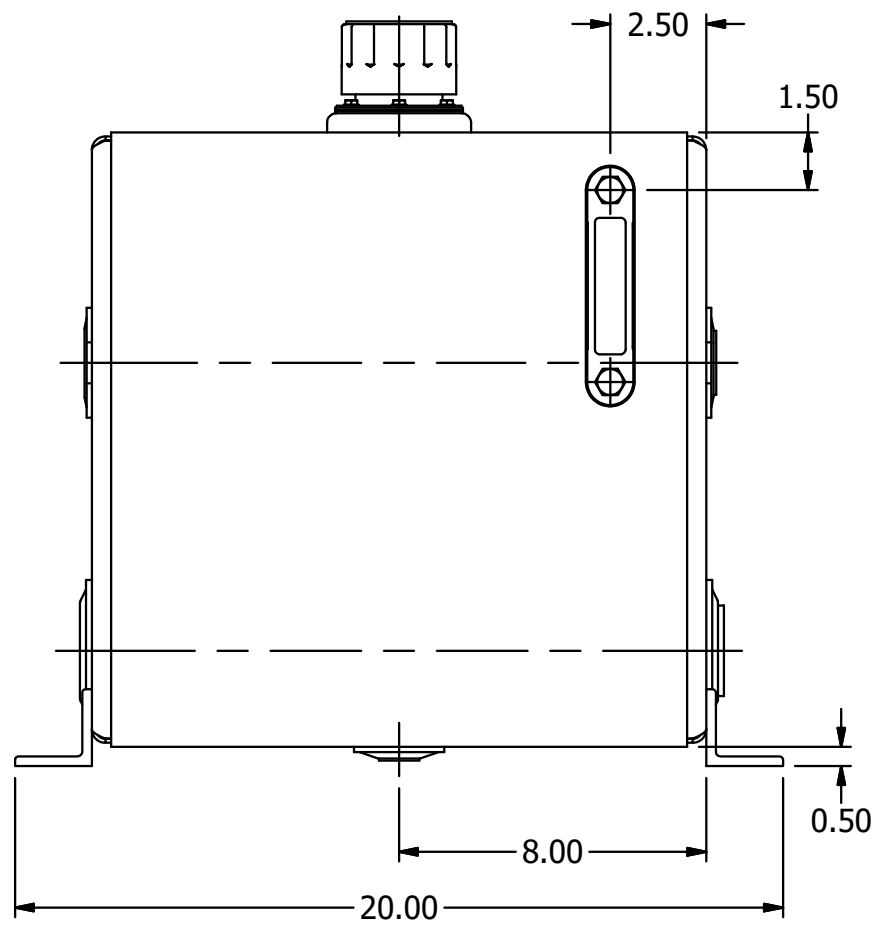
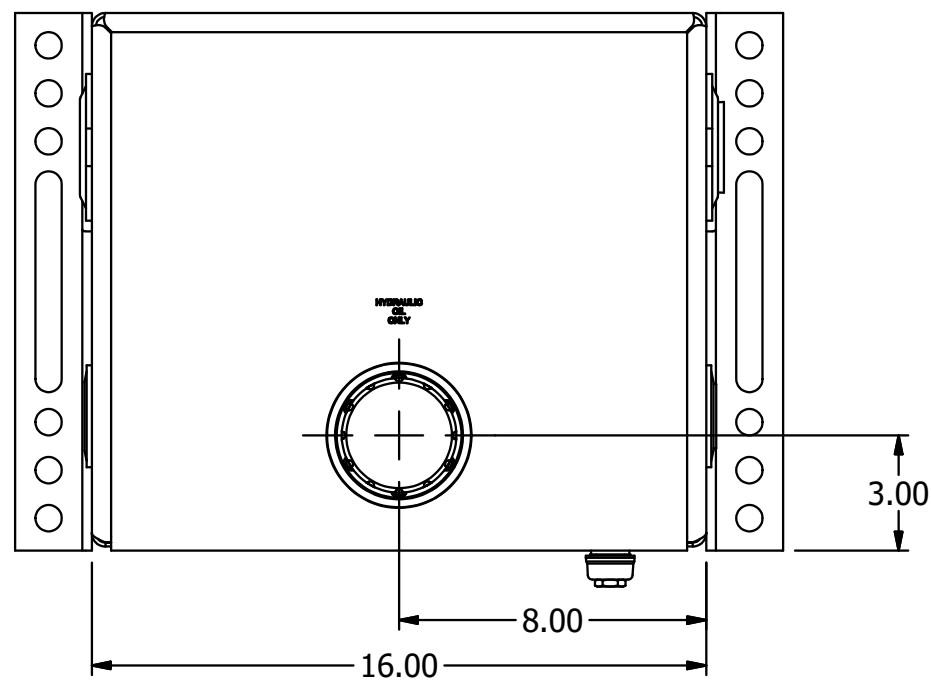
3

2

1

B

B



A

A

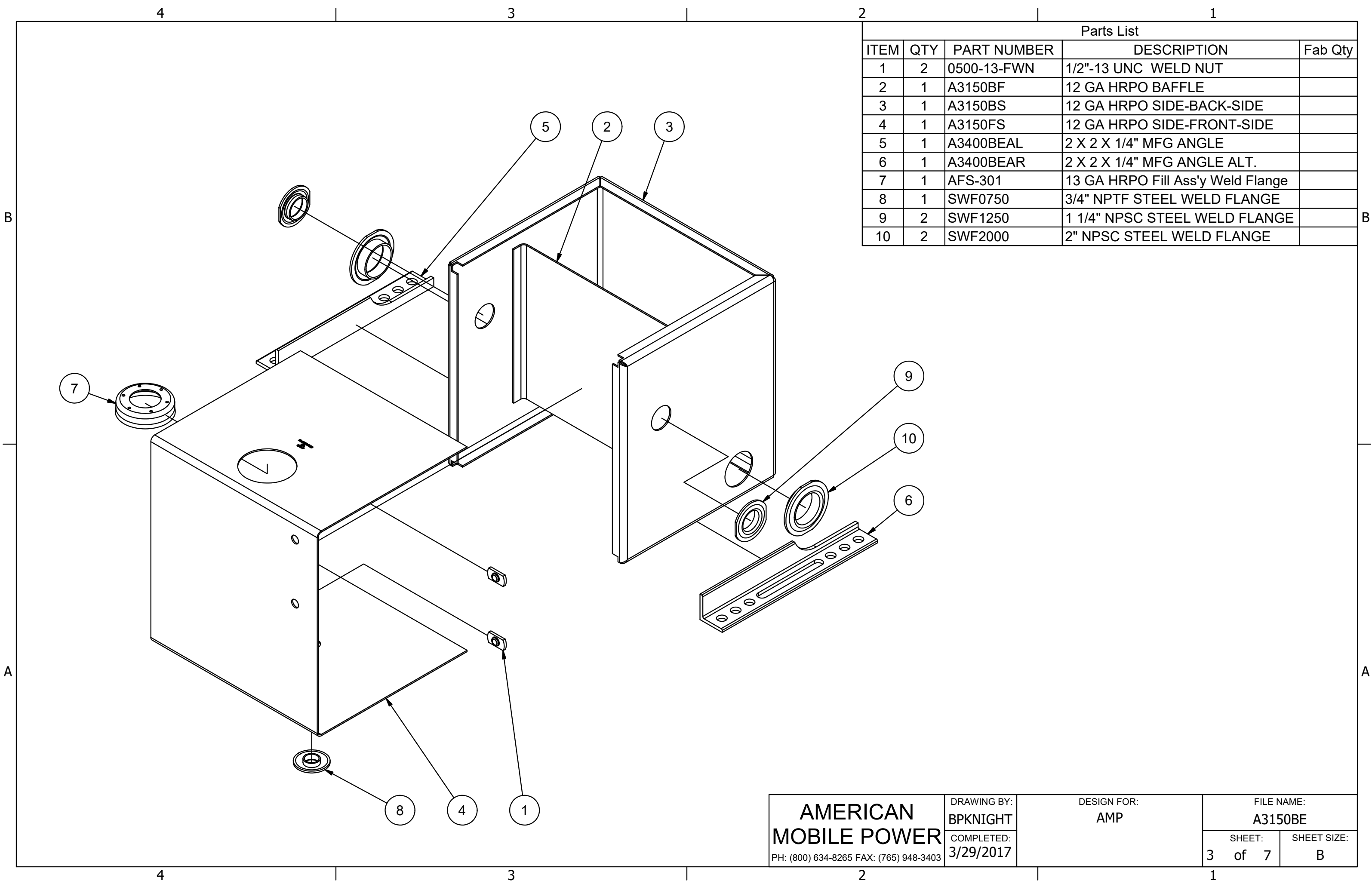
4

3

2

1

<b>AMERICAN MOBILE POWER</b> PH: (800) 634-8265 FAX: (765) 948-3403	DRAWING BY: BPKNIGHT	DESIGN FOR: AMP	FILE NAME: A3150BE	
	COMPLETED: 3/29/2017		SHEET: 2 of 7	SHEET SIZE: B



Parts List				
ITEM	QTY	PART NUMBER	DESCRIPTION	Fab Qty
1	2	0500-13-FWN	1/2"-13 UNC WELD NUT	
2	1	A3150BF	12 GA HRPO BAFFLE	
3	1	A3150BS	12 GA HRPO SIDE-BACK-SIDE	
4	1	A3150FS	12 GA HRPO SIDE-FRONT-SIDE	
5	1	A3400BEAL	2 X 2 X 1/4" MFG ANGLE	
6	1	A3400BEAR	2 X 2 X 1/4" MFG ANGLE ALT.	
7	1	AFS-301	13 GA HRPO Fill Ass'y Weld Flange	
8	1	SWF0750	3/4" NPTF STEEL WELD FLANGE	
9	2	SWF1250	1 1/4" NPSC STEEL WELD FLANGE	
10	2	SWF2000	2" NPSC STEEL WELD FLANGE	

<b>AMERICAN MOBILE POWER</b> <small>PH: (800) 634-8265 FAX: (765) 948-3403</small>	<small>DRAWING BY:</small> <b>BPKNIGHT</b>	<small>DESIGN FOR:</small> <b>AMP</b>	<small>FILE NAME:</small> <b>A3150BE</b>	
	<small>COMPLETED:</small> <b>3/29/2017</b>		<small>SHEET:</small> <b>3 of 7</b>	<small>SHEET SIZE:</small> <b>B</b>