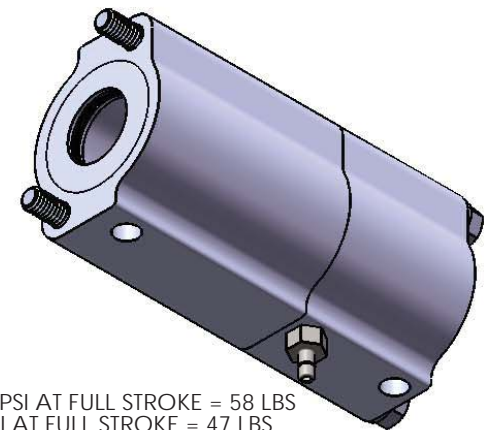
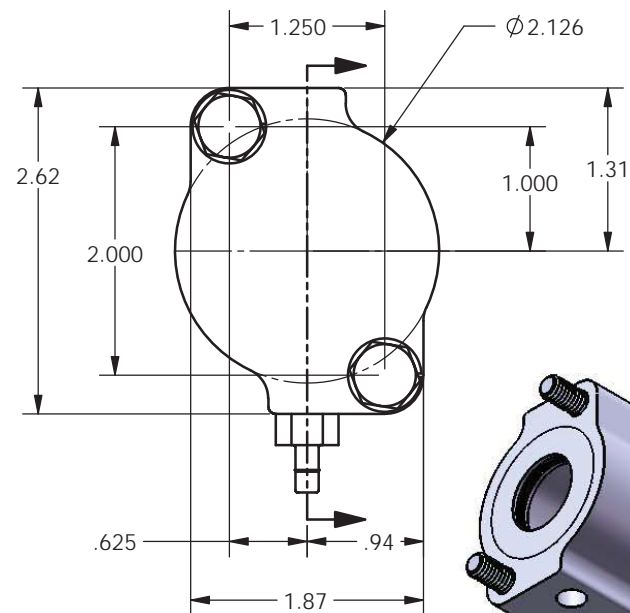
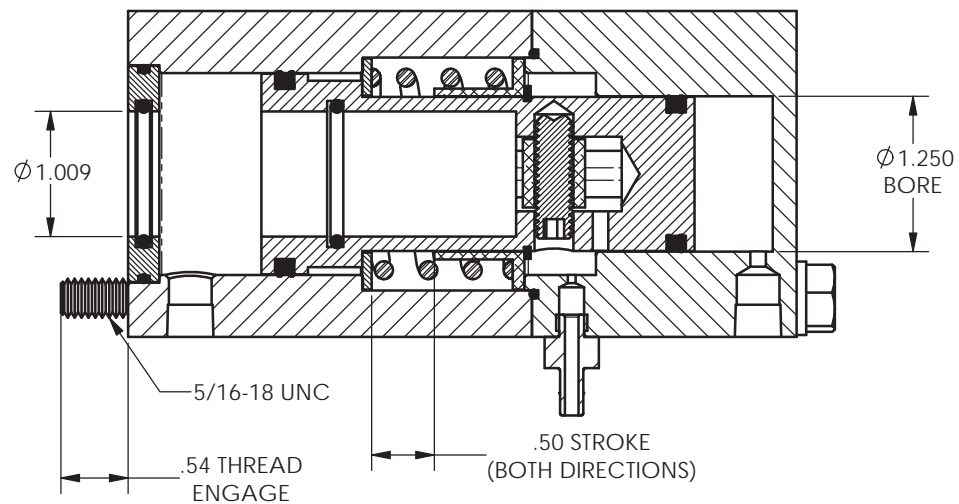
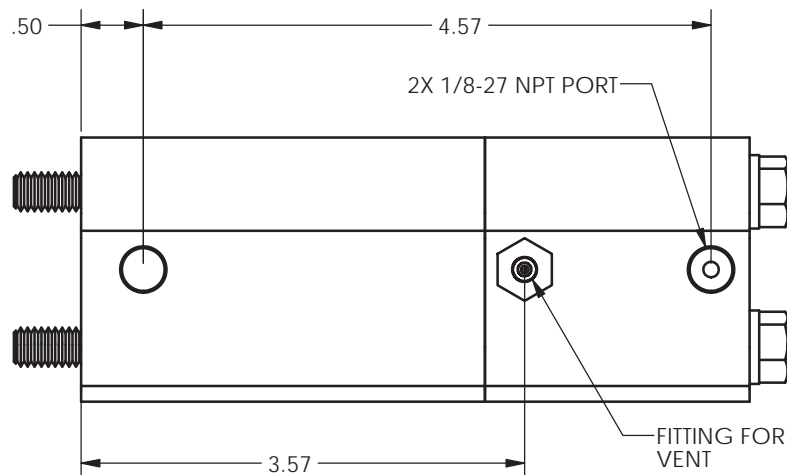


REVISIONS				
ECR	REV	DESCRIPTION	DATE	APPROVED
E1769	D	See Sheet1	06/26/2012	JUMPER



1. NEUTRAL POSITION SHOWN
2. SPRING PRELOAD = 25.4 LBS
3. MIN. EXTENSION FORCE @ 100 PSI AT FULL STROKE = 58 LBS
4. MIN. RETRACT FORCE @ 100 PSI AT FULL STROKE = 47 LBS



<b>TYPE OF PROJECTION</b>  THIRD ANGLE PROJECTION		<b>DO NOT SCALE DRAWING</b> UNLESS OTHERWISE SPECIFIED DIMENSIONS ARE IN INCHES TOLERANCES ARE: DECIMALS .X = $\pm .03$ .XX = $\pm .010$ .XXX = $\pm .005$ FRACTION = $\pm .015$ ANGLES = $\pm 1/2^\circ$		 8178 EAST 44TH STREET TULSA, OK 74145	
<b>PROPRIETARY AND CONFIDENTIAL</b> THE INFORMATION CONTAINED IN THIS DRAWING IS THE SOLE PROPERTY OF APSCO Inc.. ANY REPRODUCTION IN PART OR AS A WHOLE WITHOUT WRITTEN PERMISSION OF APSCO Inc. IS PROHIBITED.		<b>SURFACE TEXTURE OR BETTER</b> MATERIAL: N/A FINISH: N/A		<b>TITLE:</b> AIR ACT FOR C101/102 HYD PUMP	
		<b>DWG. NO.</b> C-3805-DM		<b>REV</b> D	
<b>SIZE</b> B		<b>DRAWN</b> JUMPER	<b>DATE</b> 06/26/2012	<b>CLASS</b> CYL	<b>SHT.</b> 2 OF 2
F/N:C-3000 SERIES					