

Technical Information

- CV Check Valves
- SH Shuttle Valves
- LM Load/Motor Controls
- FC Flow Controls
- PC Pressure Controls
- LE Logic Elements
- DC Directional Controls
- MV Manual Valves
- SV Solenoid Valves
- PV Proportional Valves
- CE Coils & Electronics
- BC Bodies & Cavities
- TD Technical Data

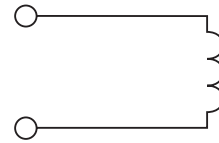
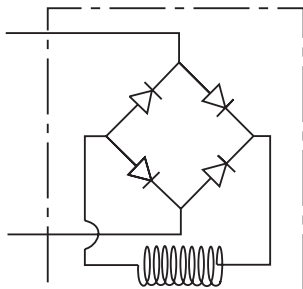
Features

- Integral Deutsch connector coil exceeds IP69K standards
- Integral Deutsch connector coil thermal shock dunk test rated
- Integral Amp Jr. coil exceeds IP67 standards for thermal shock, water resistance and "dunk capability"
- Universal 50/60 Hz operation
- Coil hermetically sealed, requires no O-rings or waterproofing kits
- External plated steel flux-carrying band (unlike encapsulated band) enables coil to withstand severe thermal shocks without cracking
- Symmetrical coil can be reversed without affecting performance

Specifications

|  |  |              |
|--|--|--------------|
| Coil Type  | S  | Standard     |
|  | P  | Puissant     |
| Nominal Wattage (See Ordering Information For Exact Wattage) | S  | 18 Watts     |
|  | P  | 28 Watts     |
| Duty Cycle   | Continuous @ 100% voltage  |              |
| Magnetic Wire Insulation Class                               | 'N' Rated at 200°C (392°F)   |              |
| Temperature Range  | -40°C to +200°C (-40°F to +392°F)  |              |
| Temperature Rise At Nominal Voltage And Natural Ventilation  | S  | 75°C (135°F) |
|  | P  | 95°C (172°F) |
| Dielectric Strength Maximum Current Leakage (Amps)           | .0005 In dry lab condition at 1000V AC for 30 seconds  |              |
|  | .001 After being immersed in 23°C (77°F) water with waterproof connector for 24 hours at 500V AC |              |
| Encapsulating Material                                       | Glass filled rynite  |              |
| Color Identification On The Terminal Boss                    | S  | Black Ring   |
|  | P  | Red Ring     |
| Weight   | 0.29 kg (0.64 lbs.)  |              |

AC Coil Assembly



Ordering Information

|                      |         |         |             |
|----------------------|---------|---------|-------------|
| CA                   |         |         |             |
| Super Coil 5/8" I.D. | Wattage | Voltage | Termination |

|      |          |
|------|----------|
| Code | Wattage  |
| S    | Standard |
| P    | Puissant |

| Code | Voltage | Watts |    | Amps |      | Ohms** |      |
|------|---------|-------|----|------|------|--------|------|
|      |         | S     | P  | S    | P    | S      | P    |
| 010  | 10 VDC  | 18    | 28 | 1.80 | 2.80 | 5.56   | 3.57 |
| 012* | 12 VDC  | 18    | 28 | 1.50 | 2.33 | 8.00   | 5.14 |
| 018  | 18 VDC  | 18    | 28 | 1.00 | 1.56 | 18.0   | 11.6 |
| 024* | 24 VDC  | 18    | 28 | 0.75 | 1.17 | 32.0   | 20.6 |
| 048  | 48 VDC  | 18    | 28 | 0.38 | 0.58 | 128.0  | 82.3 |
| 115* | 115 VAC | 18    | 28 | 0.20 | 0.26 | 554    | 417  |
| 230  | 230 VAC | 18    | 28 | 0.10 | 0.15 | 2100   | 1430 |

\*Standard Voltages      \*\*Resistance ±10% at 68°F

| Code | Termination  |
|------|--|
| A    | Amp Jr. (DC Only)  |
| AD   | Amp Jr. with 3 Amp Diode (DC Only)   |
| C    | Double Lead Wire with Conduit Connector (AC Only)                                      |
| *D   | DIN 43650 (AC or DC, Supplied without DIN Connector)                                   |
| H    | Integral Deutsch   |
| HE   | Integral Deutsch with 3 Amp Diode  |
| HS   | Integral Deutsch with Internal Seal  |
| *L   | Double Lead (DC Only)  |
| LS   | Sealed Lead Wire IP69K Rated (Available January 1, 2011)                               |
| LD   | Double Lead with Deutsch Connector DT04-2P-EP04 (DC Only) (Use 'H' series if possible) |
| LE   | Double Lead with 3 Amp Diode (DC Only)   |
| PF   | Double Lead Wire with Packard Female Weather Pack Connector 1201 5792 (DC Only)        |
| PM   | Double Lead Wire with Packard Male Weather Pack Connector 1201 0973 (DC Only)          |
| *S   | Double Spade (DC Only)   |
| *W   | Double Screw (DC only)   |
| WE   | Double Screw with 3 Amp Diode (DC Only)  |
| *Y   | Single Screw (Internally Grounded, DC Only)  |

\*UL listed 12/24/48 VDC only.

Note: Additional voltages and other terminals are available. Some coils are UL approved. For details please consult factory.

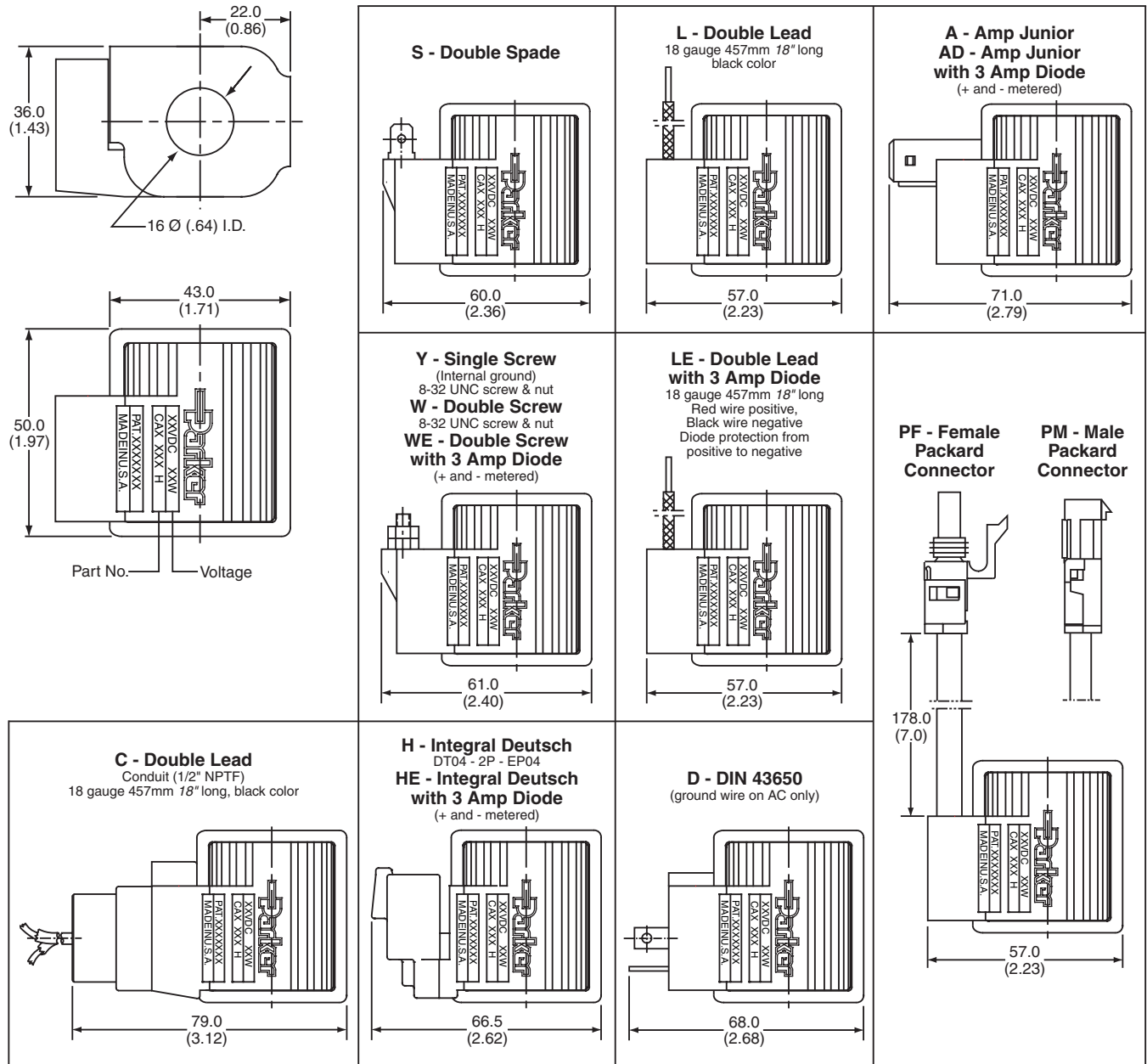
DIN Female Mating Connector: See page CE2

Deutsch Mating Connector: # DT06-2S

Packard Male Weather Pack Connector: 12010973

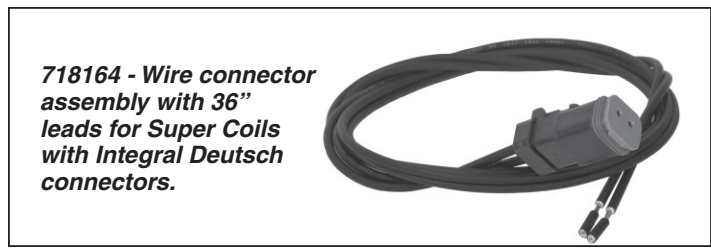
Packard Female Weather Pack Connector: 12015792

**Terminal Styles and Dimensions**



**NOTES:**

1. The standard A.C. coil includes a molded-in full wave rectifier rated for 800 peak reverse voltage.
2. All P Puissant (high wattage) coils use a red ring as an indication marker on the terminal boss. (No ring on Integral Deutsch connector.)



- CV** Check Valves
- SH** Shuttle Valves
- LM** Load/Motor Controls
- FC** Flow Controls
- PC** Pressure Controls
- LE** Logic Elements
- DC** Directional Controls
- MV** Manual Valves
- SV** Solenoid Valves
- PV** Proportional Valves
- CE** Coils & Electronics
- BC** Bodies & Cavities
- TD** Technical Data