

**Bulletin HY14-2716-B1/US**

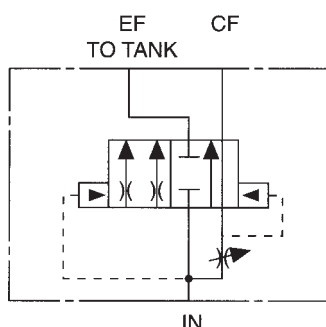
## **Series CFDA Flow Control**

***Pressure Compensated  
By-pass Type***

Effective: February 1, 2004  
Supersedes: Cat. No. GPA-2-200 dated 3/95

### **Features**

- Adjustable flow rate
- Cross drilled spool: provides extremely accurate metering
- Hardened metering spool
- High-tensile cast iron body



### **Description**

The Parker Series CFDA Flow Control offers a dependable means of obtaining flow adjustment up to 15 GPM (56.8 liters/min). It provides easy manual control where frequent flow change is required. Pressure compensation provides a smooth, constant output flow regardless of pressure changes at the controlled flow port.

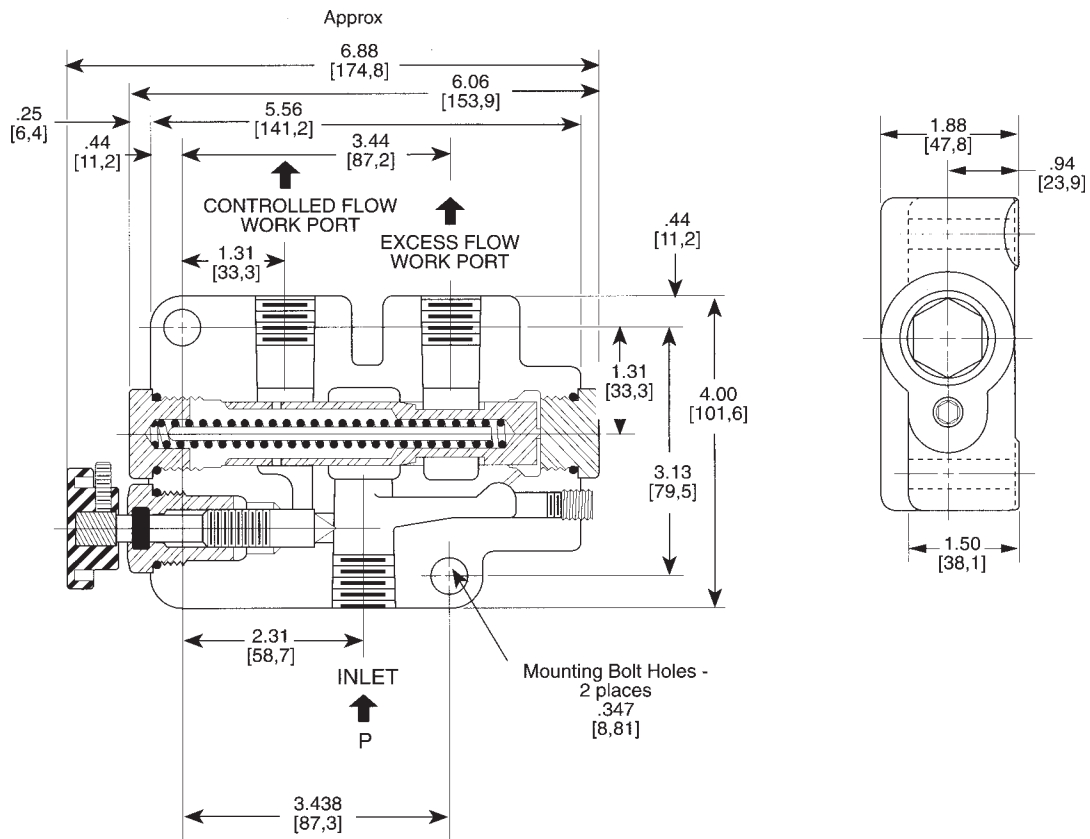
Rotating the adjusting knob varies the flow from the controlled flow port. When controlled flow demand is satisfied, the balance of the inlet flow passes through the excess flow port and returns to the tank. The excess flow port is not a work port and must not be pressurized.

Flow through the controlled flow port can be reversed, but is not pressure compensated. The Series CFDA is not available with a built-in relief valve.

### **Specifications**

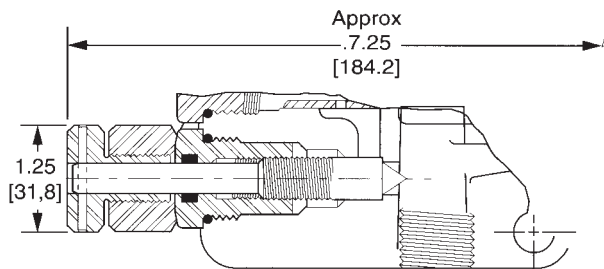
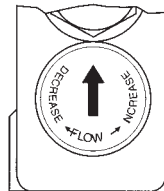
- |                                       |   |
|---------------------------------------|---|
| ■ Capacity (nominal) Adjustable ..... | Up to 15 GPM [56 litres/min]                      |
| ■ Maximum Operating Pressure.....     | 2500 PSI [172 bar]                                |
| ■ Flow Adjustment.....                | Approx. 6 turns of knob<br>from min. to max. flow |
| ■ Maximum Regulated Flow.....         | 15 GPM [56 litres/min]                            |
| ■ Minimum Compensating Pressure.....  | 50 PSI [3,4 bar]                                  |
| ■ Shipping Weight.....                | 8 Pounds [3,6 kg]                                 |

# DIMENSIONS



## OPTIONAL LOCK NUT ASSEMBLY

An optional adjusting knob arrangement with a Locking Nut to lock the adjusting screw in a selected position is available.



DIMENSIONS ARE IN INCHES (MILLIMETERS) AND ARE FOR REFERENCE ONLY.

## ORDER CODE

MODEL NO. CFDA - L - 10

### ADJUSTMENT

|   |                  |
|---|------------------|
| - | Standard Knob    |
| L | With Locking Nut |

### PORT SIZES (ALL PORTS)

|    |                        |
|----|------------------------|
| 10 | SAE 10 (7/8" - 14 UNF) |
| 50 | 1/2" - 14 NPT          |
| 75 | 3/4" - 14 NPT          |
| 51 | 1/2" - 14 BSP          |
| 71 | 3/4" - 14 BSP          |

NOTE: NPT ports are not recommended for pressures above 2000 PSI [138 bar].



# **WARNING**

FAILURE OR IMPROPER SELECTION OR IMPROPER USE OF THE PRODUCTS AND/OR SYSTEMS DESCRIBED HEREIN OR RELATED ITEMS CAN CAUSE DEATH, PERSONAL INJURY AND PROPERTY DAMAGE.

This document and other information from Parker Hannifin Corporation, its subsidiaries and authorized distributors provide product and/or system options for further investigation by users having technical expertise. It is important that you analyze all aspects of your application and review the information concerning the product or system in the current product catalog. Due to the variety of operating conditions and applications for these products or systems, the user, through its own analysis and testing, is solely responsible for making the final selection of the products and systems and assuring that all performance, safety and warning requirements of the application are met.

The products described herein, including without limitation, product features, specifications, designs, availability and pricing, are subject to change by Parker Hannifin Corporation and its subsidiaries at any time without notice.

## **Offer of Sale**

The items described in this document are hereby offered for sale by Parker Hannifin Corporation, its subsidiaries or its authorized distributors. This offer and its acceptance are governed by the provisions stated in the "Offer of Sale".

© Copyright 2004, Parker Hannifin Corporation, All Rights Reserved



### **Parker Hannifin Corporation**

Hydraulic Valve Division

520 Ternes Avenue

Elyria, Ohio, USA 44035

Tel: (440) 366-5200

Fax: (440) 366-5253

[www.parker.com/hydraulicvalve](http://www.parker.com/hydraulicvalve)

Bulletin HY14-2716-B1/US,  
3C, 2/04, PHD