

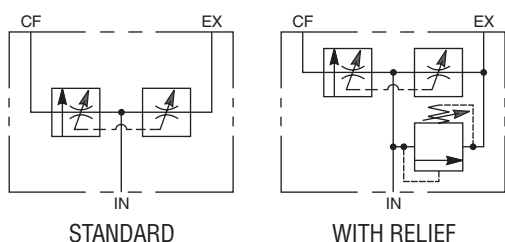
## Bulletin HY14-2725-B1/US

# Series CFQ Flow Control

Effective: February 1, 2004  
Supersedes: Cat. No. GPA-2-300 dated 6/98

## Features

- Widest array of cataloged port options
- Eliminates need for stand-off washers
- Readily convertible for three controlled-flow ranges
- Easily serviced with one rebuild kit



## Description

The Parker Series CFQ is a priority-type flow control. A constant flow rate is maintained at port "CF" regardless of load pressure changes downstream.

When flow requirements are met at port "CF", the compensator spool shifts to deliver excess flow to port "EX" for use in a secondary circuit.

The compensator maintains a constant differential pressure of less than 50 PSI (34.5 bar). With port "EX" plugged, the CFQ serves as a 2-port, pressure-compensated flow control.

On models with built-in relief, port "EX" must be connected to tank. Numerals on the indicator plate denote position only - not rate of flow. At position "0", all flow is directed to the "EX" port.

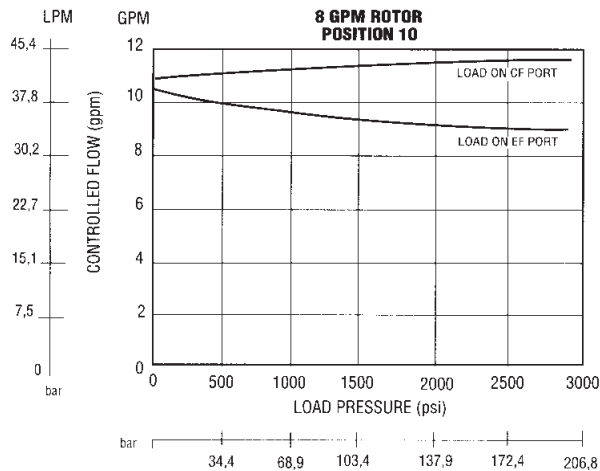
## Specifications

Operating Pressure .....	3000 PSI (206,8 bar) maximum
.....	Optional adjustable relief preset at 2500 PSI (172,4 bar)
Flow Rating .....	35 GPM (132,4 lpm) Maximum Inlet Flow
.....	Up to 30 GPM (113,5 lpm) maximum controlled flow; Other limits related to Port Size
Temperature .....	Under normal operating condition, fluid temperature should not exceed 180°F (82°C)
.....	In no instance should the temperature exceed 200°F (93°C)
Seals .....	Buna-N-Seals are standard; Consult factory for other seal requirements
Fluid Recommendations .....	Premium grade hydraulic fluid with 60 SUS (10cSt) to
.....	1000 SUS (216cSt) at operating temperature
Mounting Restrictions .....	None
Material .....	High tensile grey iron body, electroless nickel plated control spool, plated hardware parts
Weight .....	Approximately 7.8 lbs. (3,5 kg)
Accuracy .....	± 10%

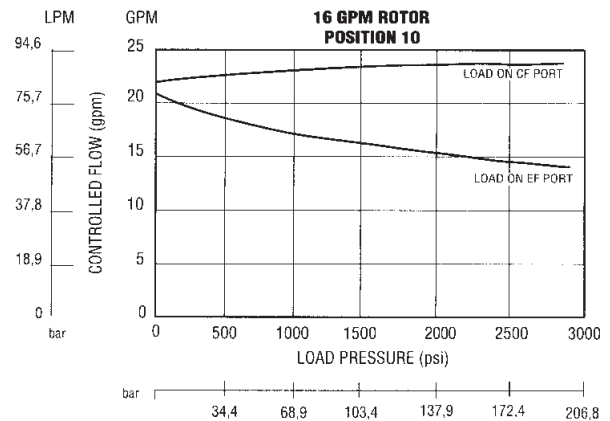
**NOTE:** Customized specifications are available, such as stainless steel control spool, special flow rates, and unique port size combinations on an OEM basis, consult factory for details.

# PERFORMANCE

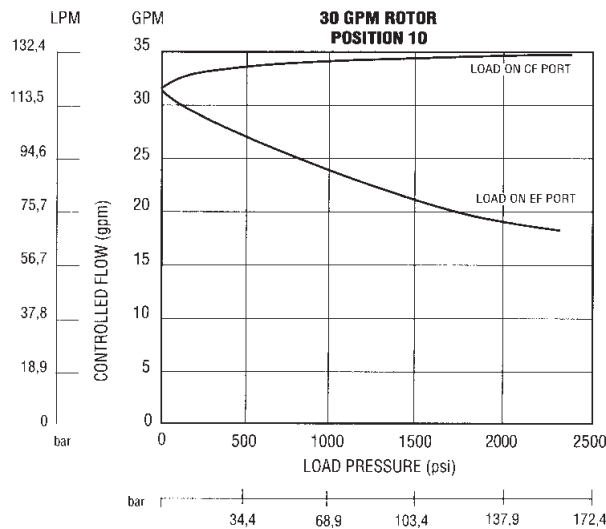
**8 GPM (30.2 LPM)**  
(Port Sizes 38, 8, 31)



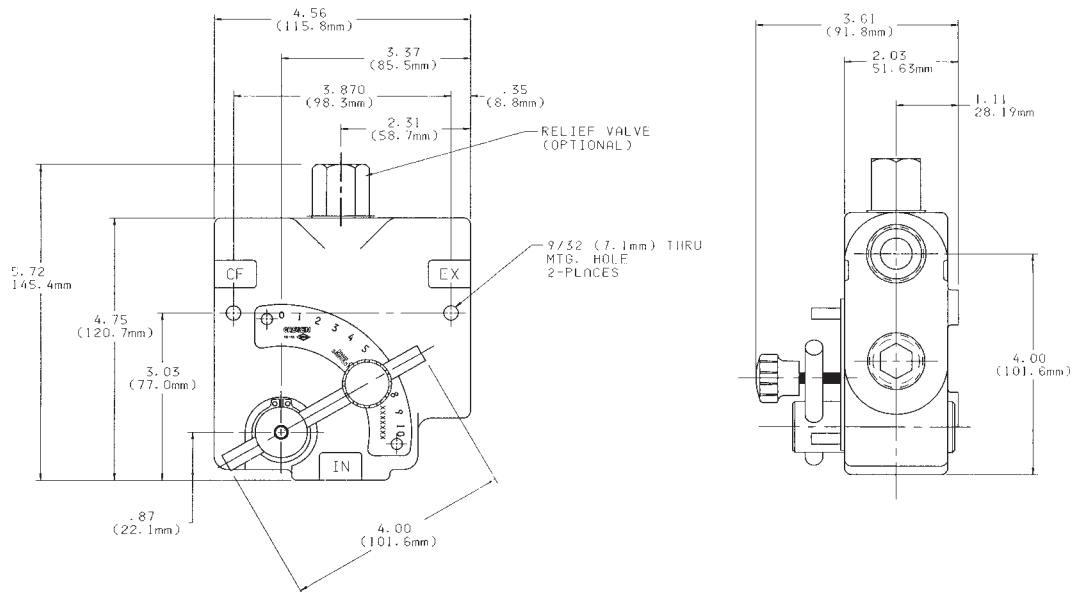
**16 GPM (60.5 LPM)**  
(Port Sizes 50, 10, 51)



**30 GPM (113.5 LPM)**  
(Port Sizes 75, 12, 71)



## ***DIMENSIONS***



DIMENSIONS ARE IN INCHES (MILLIMETERS) AND ARE FOR REFERENCE ONLY.

**ORDER CODE**

**CFQ - A - \*\* - \***

### PORT SIZES (IN, CF, AND EX)

38\* 3/8 - 18 NPTF  
50\* 1/2 - 14 NPTF  
75 3/4 - 14 NPTF

8\* 3/4 - 16 UN-2B  
10\* 7/8 - 14 UN-2B  
12\* 1 1/16 - 14 UN-2B

31\* 3/8 - 19 BSPP  
51\* 1/2 - 14 BSPP  
71\* 3/4 - 14 BSPP

\*Available after June, 1998

RELIEF

– None

R - Adjustable Relief - Factory set @ 1500 PSI (103,4 bar)  
@ 10 GPM (37,8 litres)

AVAILABLE KITS		
<b>REBUILD</b>	<b>ALL-MODELS</b>	<b>00712424</b>
<b>CONVERSION</b>	8 GPM (30,2 lpm)	00712521
	16 GPM (60,5 lpm)	00712520
	30 GPM (113,5 lpm)	00712519



#### **WARNING**

FAILURE OR IMPROPER SELECTION OR IMPROPER USE OF THE PRODUCTS AND/OR SYSTEMS DESCRIBED HEREIN OR RELATED ITEMS CAN CAUSE DEATH, PERSONAL INJURY AND PROPERTY DAMAGE.

This document and other information from Parker Hannifin Corporation, its subsidiaries and authorized distributors provide product and/or system options for further investigation by users having technical expertise. It is important that you analyze all aspects of your application and review the information concerning the product or system in the current product catalog. Due to the variety of operating conditions and applications for these products or systems, the user, through its own analysis and testing, is solely responsible for making the final selection of the products and systems and assuring that all performance, safety and warning requirements of the application are met.

The products described herein, including without limitation, product features, specifications, designs, availability and pricing, are subject to change by Parker Hannifin Corporation and its subsidiaries at any time without notice.

#### **Offer of Sale**

The items described in this document are hereby offered for sale by Parker Hannifin Corporation, its subsidiaries or its authorized distributors. This offer and its acceptance are governed by the provisions stated in the "Offer of Sale".

© Copyright 2004, Parker Hannifin Corporation, All Rights Reserved



#### **Parker Hannifin Corporation**

Hydraulic Valve Division

520 Ternes Avenue

Elyria, Ohio, USA 44035

Tel: (440) 366-5200

Fax: (440) 366-5253

[www.parker.com/hydraulicvalve](http://www.parker.com/hydraulicvalve)

Bulletin HY14-2725-B1/US,  
3C, 2/04, PHD