

CV

Check  
Valves

SH

Shuttle  
ValvesLM  
Load/Motor  
Controls

FC

Flow  
ControlsPC  
Pressure  
ControlsLE  
Logic  
ElementsDC  
Directional  
Controls

MV

Manual  
Valves

SV

Solenoid  
ValvesPV  
Proportional  
ValvesCE  
Coils &  
ElectronicsBC  
Bodies &  
CavitiesTD  
Technical  
Data

## General Description

Cartridge Style Pilot Operated Check Valve. For additional information see Technical Tips on pages CV1-CV4.

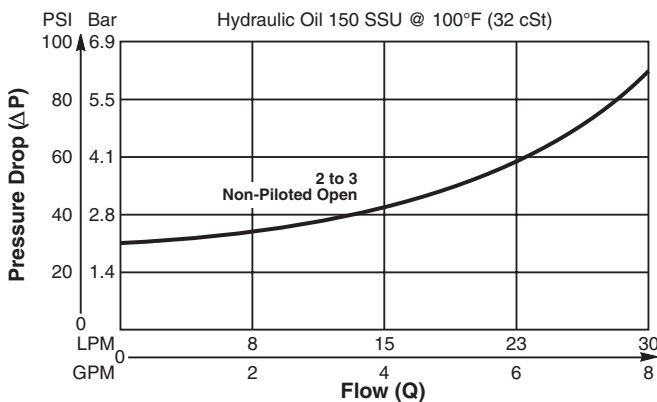


## Features

- Hardened, precision ground parts for durability
- Internal pilot position simplifies manifold design
- All external parts have yellow zinc dichromate. This coating is ideal for salt spray applications.

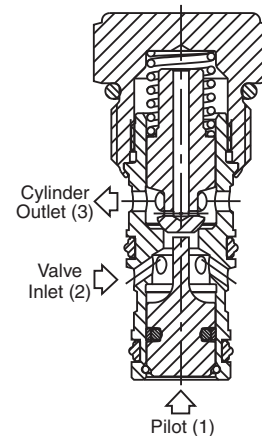
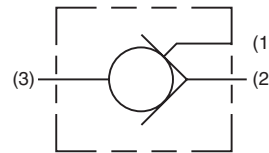
## Performance Curve

Pressure Drop vs. Flow (Through cartridge only)

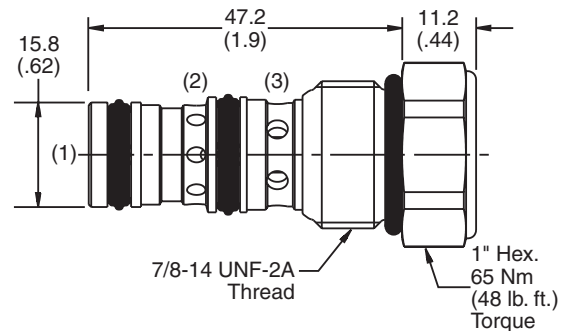


## Specifications

Rated Flow	30 LPM (8 GPM)
Maximum Inlet Pressure	350 Bar (5000 PSI)
Leakage at 150 SSU (32 cSt)	2 drops/min. (0.13 cc/min.) at 350 Bar (5000 PSI)
Pilot Ratio	4:1
Cartridge Material	All parts steel. All operating parts hardened steel.
Operating Temp. Range/Seals	-45°C to +93.3°C ("D"-Ring) (-50°F to +200°F) -31.7°C to +121.1°C (Fluorocarbon) (-25°F to +250°F)
Fluid Compatibility/Viscosity	Mineral-based or synthetic with lubricating properties at viscosities of 45 to 2000 SSU (6 to 420 cSt)
Filtration	ISO code 16/13, SAE Class 4 or better
Approx. Weight	.09 kg (0.2 lbs.)
Cavity	C10-3 (See BC Section for more details)
Form Tool	Rougher NFT10-3R Finisher NFT10-3F



## Dimensions Millimeters (Inches)



## Ordering Information

CPH104P

10 Size  
P.O. Check ValveCracking  
Pressure

Seals

Body  
MaterialPort  
Size

Code	Cracking Pressure
15	1.0 Bar (15 PSI)
Omit	2.1 Bar (31 PSI)
50	3.5 Bar (50 PSI)

Code	Body Material
Omit	Steel
A	Aluminum

Code	Seals / Kit No.
Omit	"D"-Ring / (SK10-3)
N	Nitrile / (SK10-3N)
V	Fluorocarbon / (SK10-3V)

\* Add "A" for aluminum, omit for steel.  
† Steel body only.

Code	Port Size	Body Part No.
Omit	Cartridge Only	
4P	1/4" NPTF	(B10-3-*4P)
6P	3/8" NPTF	(B10-3-*6P)
8P	1/2" NPTF	(B10-3-*8P)
6T	SAE-6	(B10-3-*6T)
8T	SAE-8	(B10-3-*8T)
6B	3/8" BSPG	(B10-3-6B)†
8B	1/2" BSPG	(B10-3-*8B)