

CV

Check  
Valves

SH

Shuttle  
Valves

LM

Load/Motor  
Controls

FC

Flow  
Controls

PC

Pressure  
Controls

LE

Logic  
Elements

DC

Directional  
Controls

MV

Manual  
Valves

SV

Solenoid  
Valves

PV

Proportional  
Valves

CE

Coils &  
Electronics

BC

Bodies &  
Cavities

TD

Technical  
Data

## General Description

Cartridge Style Check Valve.

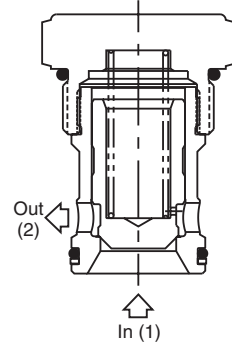
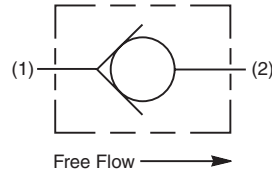
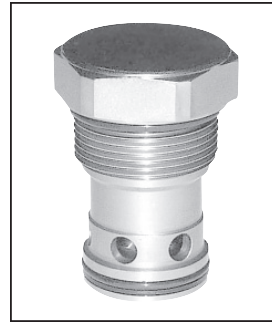
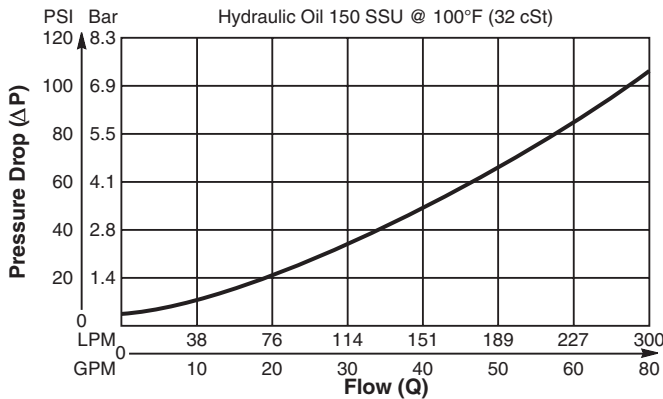
For additional information see Technical Tips on pages CV1-CV4.

## Features

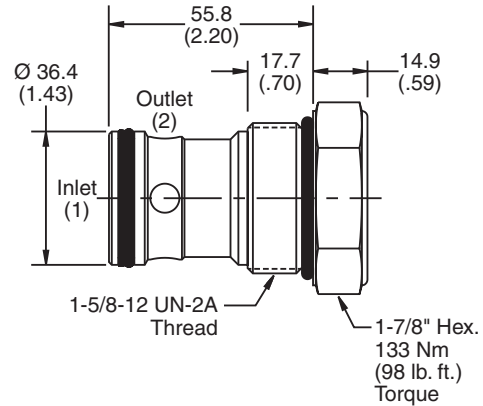
- Hardened, precision ground parts for durability
- Fully guided poppet for smooth operation
- All external parts zinc plated

## Performance Curve

Pressure Drop vs. Flow (Through cartridge only)



## Dimensions

 Millimeters (Inches)

## Specifications

<b>Rated Flow</b>	303 LPM (80 GPM)
<b>Maximum Inlet Pressure</b>	350 Bar (5000 PSI)
<b>Leakage at 150 SSU (32 cSt)</b>	5 drops/min. (.33 cc/min.) at 350 Bar (5000 PSI)
<b>Cartridge Material</b>	All parts steel. All operating parts hardened steel.
<b>Operating Temp. Range/Seals</b>	-40°C to +93.3°C (Nitrile) (-40°F to +200°F) -31.7°C to +121.1°C (Fluorocarbon) (-25°F to +250°F)
<b>Fluid Compatibility/Viscosity</b>	Mineral-based or synthetic with lubricating properties at viscosities of 45 to 2000 SSU (6 to 420 cSt)
<b>Filtration</b>	ISO code 16/13, SAE Class 4 or better
<b>Approx. Weight</b>	.27 kg (0.6 lbs.)
<b>Cavity</b>	C20-2 (See BC Section for more details)
<b>Form Tool</b>	Rougher None Finisher NFT20-2F

## Ordering Information

**CVH201P**20 Size  
Check ValveCracking  
Pressure

Seals

Body  
MaterialPort  
Size

Code	Cracking Pressure
Omit	0.3 Bar (5 PSI)
20	1.4 Bar (20 PSI)
65	4.5 Bar (65 PSI)

Code	Body Material
Omit	Steel

Code	Seals / Kit No.
Omit	Nitrile / (SK20-2)
V	Fluorocarbon / (SK20-2V)

Code	Port Size	Body Part No.
Omit	Cartridge Only	
20T	SAE-20	(B20-2-20T)
20B	1-1/4" BSPG	(B20-2-20B)