

**CV** Check Valves  
**SH** Shuttle Valves  
**LM** Load/Motor Controls  
**FC** Flow Controls  
**PC** Pressure Controls  
**LE** Logic Elements  
**DC** Directional Controls  
**MV** Manual Valves  
**SV** Solenoid Valves  
**PV** Proportional Valves  
**CE** Coils & Electronics  
**BC** Bodies & Cavities  
**TD** Technical Data

## General Description

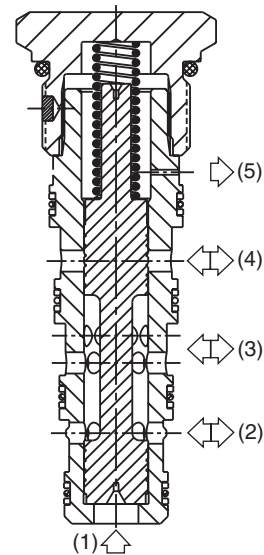
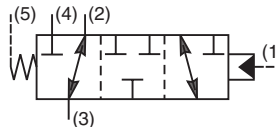
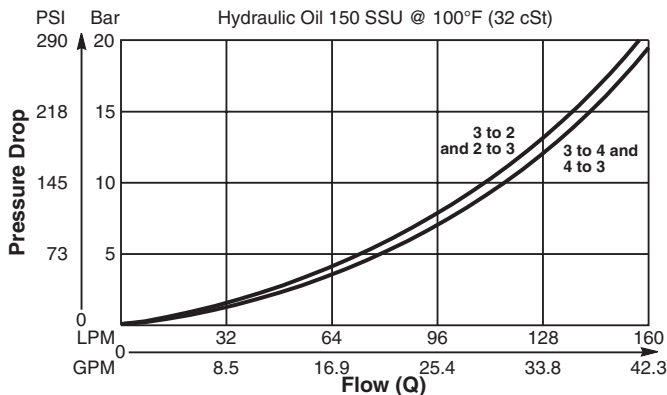
Pilot Operated Directional Valve, 3-Way, 2 Position, External Drain, Closed Transition.

## Features

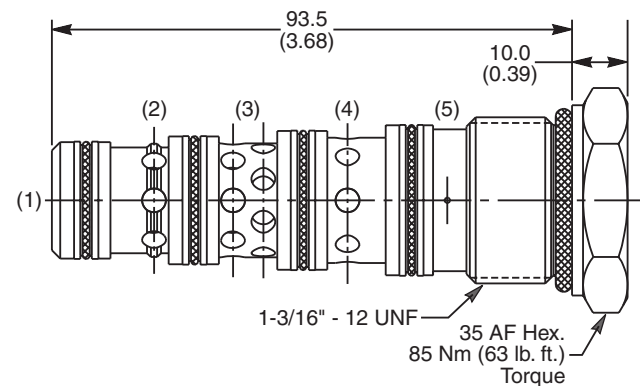
- High flow capacity
- Used as high flow switching or metering element
- Range of spring settings available
- All external parts zinc plated

## Performance Curve

**Pressure Drop vs. Flow (Through cartridge only)**



## Dimensions



## Specifications

<b>Rated Flow</b>	160 LPM (42.3 GPM)
<b>Nominal Flow @ 7 Bar (100 PSI)</b>	90 LPM (24 GPM)
<b>Maximum Inlet Pressure</b>	420 Bar (6000 PSI)
<b>Pilot Switching Pressure</b>	See ordering information
<b>Cartridge Material</b>	Steel operating parts, hardened steel spool.
<b>Operating Temp. Range/Seals</b>	-40°C to +93.3°C (Nitrile, Buna-N) (-40°F to +200°F) -31.7°C to +121.1°C (Fluorocarbon) (-25°F to +250°F)
<b>Fluid Compatibility/Viscosity</b>	Mineral-based or synthetic with lubricating properties at viscosities of 45 to 2000 SSU (6 to 420 cSt)
<b>Filtration</b>	ISO code 16/13, SAE Class 4 or better
<b>Approx. Weight</b>	.33 kg (.76 lbs.)
<b>Cavity</b>	5A (See BC Section for more details)

## Ordering Information

<b>N5B125</b>	Directional Valve (All Ports Closed)	Pilot Switching Pressure	Seals
---------------	--------------------------------------	--------------------------	-------

Code	Switching Pressure
0.0	0.0 Bar (0 PSI)
5.0	5.0 Bar (73 PSI)
6.9	6.9 Bar (100 PSI) Std.
10.0	10.0 Bar (145 PSI)
15.0	15.0 Bar (217 PSI)

*If no switching pressure is specified, valve will be supplied as N5B125-6.9N*

Code	Seals / Kit No.
N	Nitrile, Buna-N / (SK30103N-1)
V	Fluorocarbon / (SK30103V-1)

### Order Bodies Separately

<b>LB10</b>	Line Body	Porting	Body Material
<b>Code</b>	<b>Porting</b>	<b>Code</b>	<b>Body Material</b>
314	3/4" BSP (main) 1/4" BSP (aux)	A	Aluminum
321	3/4" SAE (main) 1/4" SAE (aux)	S	Steel