

Bulletin HY14-2730-B1/US

Series DS12, DS75, DS71 Two-Position, Double Selector Valve

Effective: February 1, 2004
Supersedes: All Previous Publications

Features

- Pressure balanced spool
- Chrome plated spool
- High-tensile cast iron body
- Three handle position options

PORTING KEY

With spool pushed into housing: (Viewed from handle end)

- Ports A and D are connected to each other.
- Ports B and C are connected to each other.

With spool pulled out of housing: (Viewed from handle end)

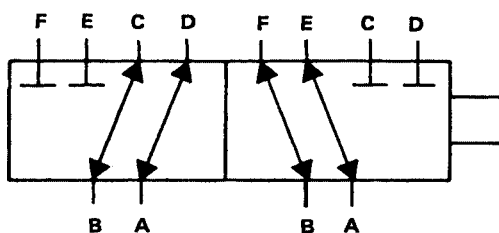
- Ports A and E are connected to each other.
- Ports B and F are connected to each other.

Description

The Parker Series DS two-position, double selector valve directs the flow of hydraulic oil to two separate circuits. This permits operation of two, double-acting cylinders with one, four-way control valve or four, single-acting cylinders with two, three-way control valves.

The hydraulic circuit which is to be operated should be selected before pressure is applied.

Valve spool is of the open crossover type. As spool is moved and one set of outlet ports starts to close, the other set of outlet ports starts to open.



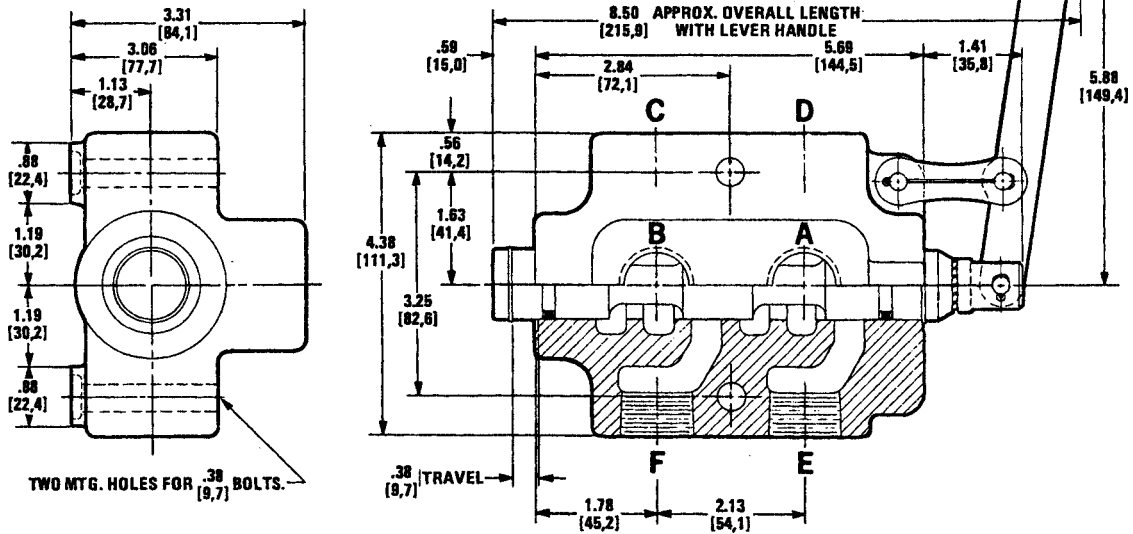
Specifications

Capacity (nominal)	25 GPM [94 litres/min]
Maximum Operating Pressure	
Model DS-75	2000 PSI [138 bar]
Model DS-12	3000 PSI [207 bar]
Shipping Weight	12 Pounds [5,5 kg]

DIMENSIONS

ALL DIMENSIONS ARE IN INCHES [MILLIMETRES]
AND ARE FOR REFERENCE ONLY

STANDARD HANDLE – MAY BE
MOUNTED TO EITHER SIDE OR
IN VERTICAL POSITION. HANDLE
IS SHOWN IN SIDE POSITION.



ORDER CODE

MODEL NO. DS - 12

PORT SIZES (ALL PORTS)	
12	SAE 12 (1-1/16" – 12 UN)
75	3/4" – 14 NPT
71	3/4" – 14 BSP

NOTE: NPT pipe ports are not recommended for pressures above 2000 PSI [138 bar].

If handle assembly is not required, specify: LCHA (Less Complete Handle Assembly).

WARNING

FAILURE OR IMPROPER SELECTION OR IMPROPER USE OF THE PRODUCTS AND/OR SYSTEMS DESCRIBED HEREIN OR RELATED ITEMS CAN CAUSE DEATH, PERSONAL INJURY AND PROPERTY DAMAGE.

This document and other information from Parker Hannifin Corporation, its subsidiaries and authorized distributors provide product and/or system options for further investigation by users having technical expertise. It is important that you analyze all aspects of your application and review the information concerning the product or system in the current product catalog. Due to the variety of operating conditions and applications for these products or systems, the user, through its own analysis and testing, is solely responsible for making the final selection of the products and systems and assuring that all performance, safety and warning requirements of the application are met.

The products described herein, including without limitation, product features, specifications, designs, availability and pricing, are subject to change by Parker Hannifin Corporation and its subsidiaries at any time without notice.

Offer of Sale

The items described in this document are hereby offered for sale by Parker Hannifin Corporation, its subsidiaries or its authorized distributors. This offer and its acceptance are governed by the provisions stated in the "Offer of Sale".

© Copyright 2004, Parker Hannifin Corporation, All Rights Reserved



Parker Hannifin Corporation
Hydraulic Valve Division
520 Ternes Avenue
Elyria, OH, 44035 USA
Tel: (440) 366-5200
Fax: (440) 366-5253
www.parker.com/hydraulicvalve

Bulletin HY14-2730-B1/US,
3C, 3/04, PHD