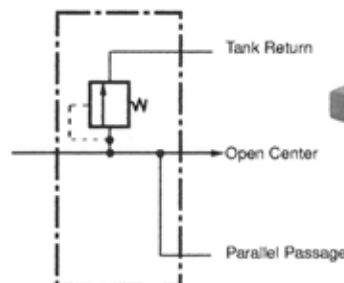


## Inlets (2500 psi)

NOTE: Inlets are machined for a main R/V or R/V plug and are furnished with plastic closures. See Section G, Page 32 for inlet port plugs

Code	End Port HP	Top Port HP	End Port LP	Top Port LP
DVA20-A440	1" NPT	1" NPT	N/A	N/A
DVA20-A880	SAE-16	SAE-16	N/A	N/A
DVA20-A000	NON-PORTED HOUSING			
Combination Inlet - Outlet				
DVA20-N4444	1" NPT	1" NPT	1" NPT	1" NPT
DVA20-N8888	SAE-16	SAE-16	SAE-16	SAE-16
DVA20-N0000	NON-PORTED HOUSING			



Schematic shown with main R/V



NOTE: For inlet with solenoid section pilot supply port machining, see DVG20 inlet sections, page C1.

## Mid-section Inlets

### Split Flow

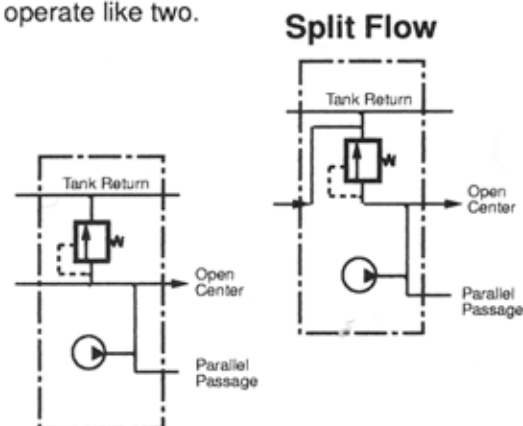
Code	Top Port
DVA20-SFA30	3/4" NPT
DVA20-SFA70	SAE-12
DVA20-SFA00	Non-Ported

### Combined Flow

DVA20-CFA30	3/4" NPT
DVA20-CFA70	SAE-12
DVA20-CFA00	Non-Ported

NOTE: Mid-section inlets are machined for a main R/V or R/V plug and are furnished with plastic closures. See Section G, Page 32 for inlet port plugs

Separates primary and secondary pump flows which allows one valve bank to operate like two.



### Combined Flow

Combines primary and secondary pump flows for faster operating speed of downstream functions. Schematics shown with main R/V

## Adjustable Relief Valve Cartridges

### For Inlets and Mid-section Inlets

Code	Description
DVA20-MRV	Main R/V pressure range 800-2500 psi. Factory set @ 2000 psi @ 30 gpm
DVA20-MRVP	Main relief valve plug



### For Code N Combination Inlet / Outlets

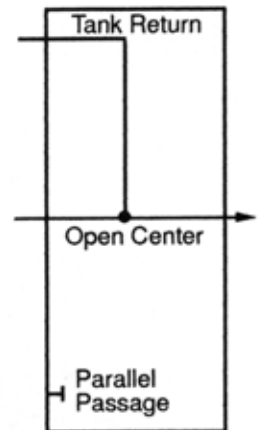
DV-PRVAC	Main R/V, Screw Adj., 500 to 2500 psi
DV-PRV-1	Main R/V, Slug Adj., 500 to 1000 psi
DV-PRV-2	Main R/V, Slug Adj., 1000 to 2500 psi
DV-PRVP	Main R/V, Plug

## Outlets

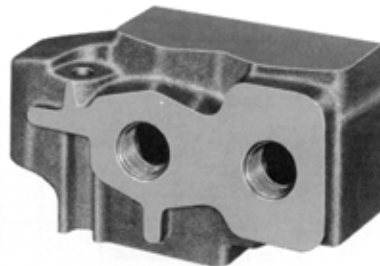
### Tank Return Type

Code	End Port	Top Port
DVA20-TR44	1" NPT	1" NPT
DVA20-TR88	SAE-16	SAE-16
DVA20-TR00	NON-PORTED HOUSING	

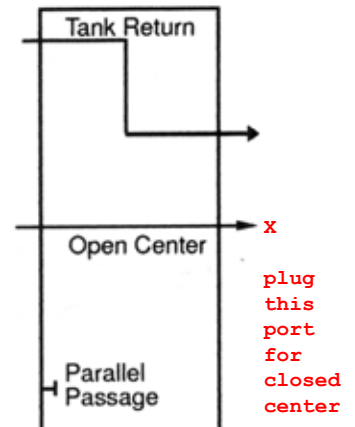
See section G, Page32 for port plugs



### Pressure Beyond Type



	End Port LP	End Port HP	Top Port LP	Top Port HP
DVA20-PB44	1" NPT	1" NPT	1" NPT	1" NPT
DVA20-PB80	SAE-16	SAE-16		
DVA20-PB08			SAE-16	SAE-16
DVA20-PB00	Non-Ported Housing			



### Stud Kits

Torque to 350 inch pounds

Number of Sections Between Inlet and Outlet

Code	1	2	3	4	5	6	7	8
DVA20-	SK-1	SK-2	SK-3	SK-4	SK-5	SK-6	SK-7	SK-8
Code N - Combination Inlet / Outlet Studs								
DVA20-	NSK-1	NSK-2	NSK-3	NSK-4	NSK-5	NSK-6	NSK-7	NSK-8

## Lo-Boy Work Sections -- Parallel Circuits

Code	4-Way 3-Position Hold In Neutral	3-Way 3-Position Hold In Neutral	4-Way 3-Position Float In Neutral	4-Way 4-Position Float Position Detented	Port Size	Work Port NOT Machined	Spring Return	3-Position Detent	Metered Hydraulic Remote Control	Solenoid Operated	Air Shift		
DVA20-DAO	•					•	•						
DVA20-DA3	•				3/4" NPT		•						
DVA20-DA7	•				SAE-12		•						
DVA20-SAO		•				•	•						
DVA20-SA3		•			3/4" NPT		•						
DVA20-SA7		•			SAE-12		•						
DVA20-MAO			•			•	•						
DVA20-MA3			•		3/4" NPT		•						
DVA20-MB3			•		3/4" NPT			•					
DVA20-MA7			•		SAE-12		•						
DVA20-MB7			•		SAE-12			•					
DVA20-FC3				•	3/4" NPT		•						
DVA20-FC7				•	SAE-12		•						
DVA20-DK7-12V	•				SAE-12					12VDC			
DVA20-DK7-24V	•				SAE-12					24 VDC			
DVA20-DX3	•				3/4" NPT				•				
DVA20-DX7	•				SAE-12				•				
DVA20-DV3	•				3/4" NPT						•		
DVA20-DV7	•				SAE-12						•		
DVA20-MX3			•		3/4" NPT				•				
DVA20-MX7			•		SAE-12				•				
DVA20-DB3	•				3/4" NPT			•					
DVA20-DB7	•				SAE-12			•					
DVA20-WDA7	Series				SAE-12		•						
DVA20-WMA7			Series		SAE-12		•						

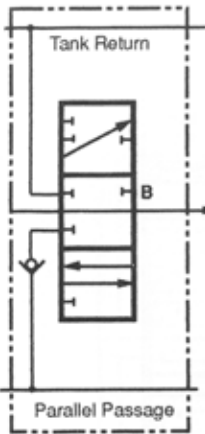
Note: See Section G, Page 33 for section seal kits.

Codes outside of the shaded area may require increased lead time.

Most codes outside the shaded area can be made from codes inside the area and kits on page 33.

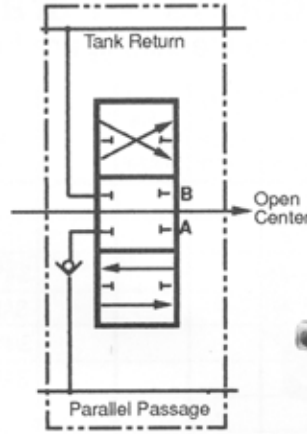
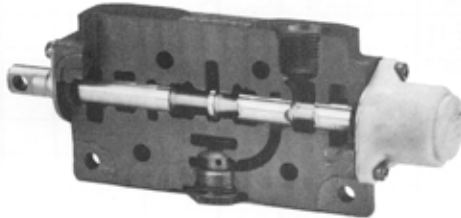
Solenoids are furnished with spade connectors

Machining instructions for standard housings are included in solenoid kits.



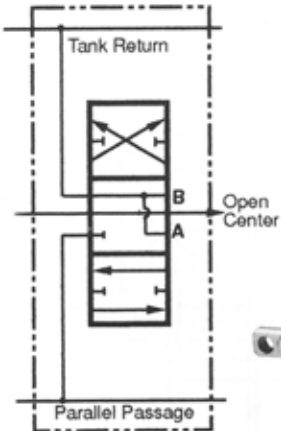
### SA7

Single-Acting Section  
3-Way, 3-Position, Hold in Neutral  
Cylinder Spool



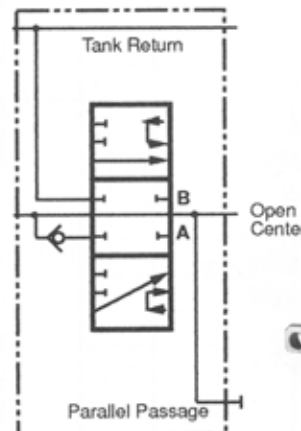
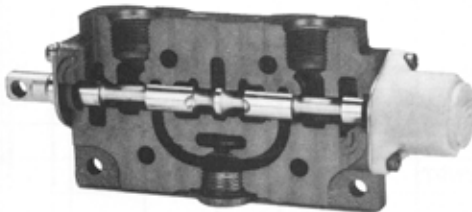
### DA7

Double-Acting Section  
4-Way, 3-Position, Hold in Neutral  
Cylinder Spool



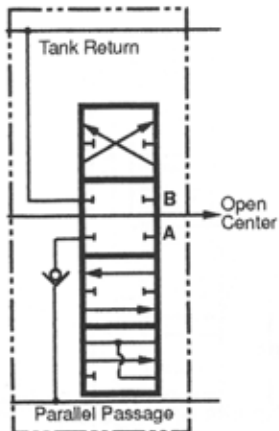
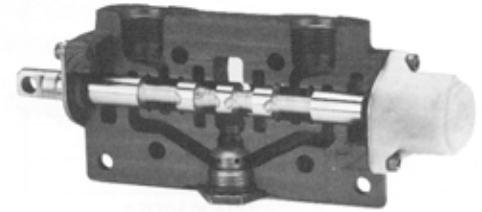
### MA7

Double-Acting Section  
4-Way, 3-Position, Float in Neutral  
Motor Spool



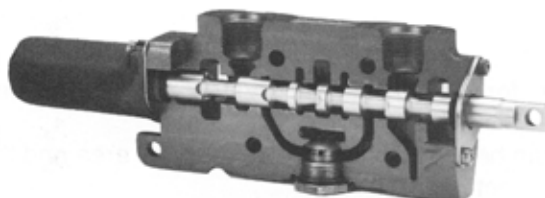
### WDA7

Double-Acting Section  
Series Circuit  
4-Way, 3-Position, Hold in Neutral  
Cylinder Spool



### FC7

Double-Acting Float Section  
4-Way, 4-Position, Detent in Float  
Hold in Neutral, Float in 4th Position



### Hi-Boy Work Sections -- Parallel Circuit

Sections with port relief valve machining are furnished with plastic closures

CODE	4-Way 3-Pos Hold In Neutral	3-Way 3-Pos Hold In Neutral	4-Way 3-Pos Float In Neutral		Port Size	Work Port NOT Machined	Spring Return	3-Pos Detent	Metered Hydraulic Remote Control	Solenoid Operated	Air Shift	Port R/V Machined
DVA20-HA000	•					•	•					
DVA20-HA055	•					•	•					•
DVA20-HA355	•				3/4"NPT		•					•
DVA20-HA755	•				SAE-12		•					•
DVA20-HA300	•				3/4"NPT		•					
DVA20-HA700	•				SAE-12		•					
DVA20-JA005		•				•	•					•
DVA20-JA305		•			3/4"NPT		•					•
DVA20-JA705		•			SAE-12		•					•
DVA20-LA000			•			•	•					
DVA20-LA055			•			•	•					•
DVA20-LA355			•		3/4"NPT		•					•
DVA20-LA755			•		SAE-12		•					•
DVA20-LA300			•		3/4"NPT		•					
DVA20-LA700			•		SAE-12		•					
DVA20-LB300			•		3/4"NPT			•				
DVA20-LB700			•		SAE-12			•				
DVA20-LV755			•		SAE-12						•	•
DVA20-LX755			•		SAE-12				•			•
DVA20-HK755-12V	•				SAE-12					•12VDC		•
DVA20-HK755-24V	•				SAE-12					•24VDC		•
DVA20-HX355	•				3/4"NPT				•			•
DVA20-HX755	•				SAE-12				•			•
DVA20-HV355	•				3/4"NPT						•	•
DVA20-HV755	•				SAE-12						•	•
DVA20-HB355	•				3/4"NPT			•				•
DVA20-HB755	•				SAE-12			•				•
DVA20-JV700		•			SAE-12						•	
DVA20-JB700		•			SAE-12			•				
DVA20-JV705		•			SAE-12						•	•
DVA20-JB305		•			3/4"NPT			•				•
DVA20-JB705		•			SAE-12			•				•

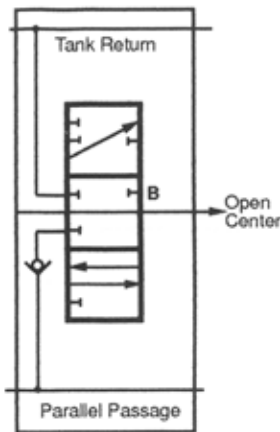
Note: See section G, pages 32 and 33, for section seal kits and R/V port accessories.

Codes outside the shaded area may require longer lead time.

Most codes outside the shaded area can be made from codes inside the area and the kits on page 33.

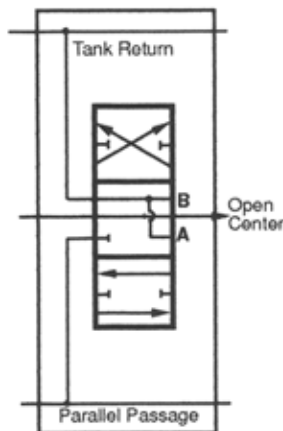
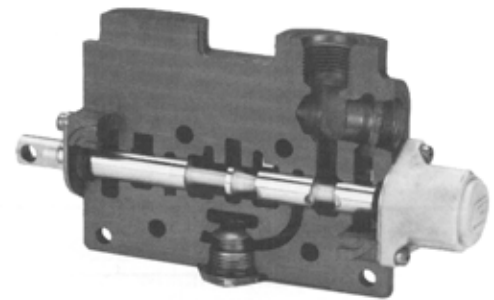
Solenoids are furnished with spade connectors.

Machining instructions for standard housings are included in solenoid kits.



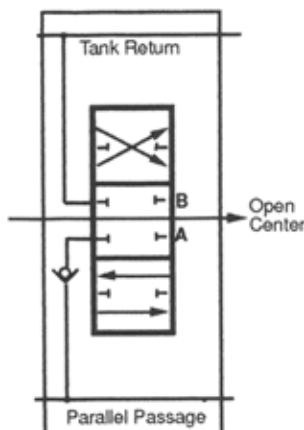
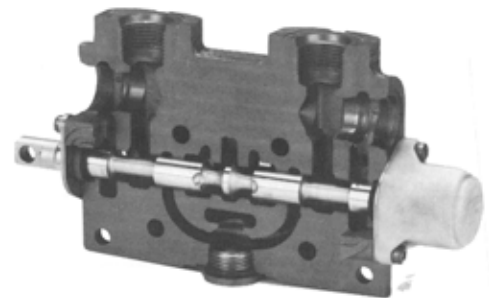
## JA705

Single-Acting Section  
3-Way, 3-Position, Hold in Neutral  
Cylinder Spool



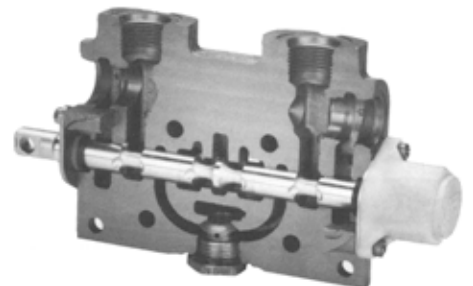
## LA755

Double-Acting Section  
4-Way, 3-Position, Float in Neutral  
Motor Spool



## HA755

Double-Acting Section  
4-Way, 3-Position, Hold in Neutral  
Cylinder Spool



## Relief Valves For DVA20/35 and DVG20/35

Code	Screw Adjustable Port Relief Valve With A/C 500 to 5000 psi	Slug Adjustable Port Relief Valve Without A/C		
		500 to 1000	1000 to 2500	2500 to 3500
DV-	*** PRVAC	*PRV-1	**PRV-2	***PRV-3
DV-	---	PRV-SK Shim Kit for Above		

All relief valves are full-flow  
See inlet sections for main relief valve codes  
Port relief valves are factory set at 10 gpm and:

- \* 1000 psi
- \*\* 2000 psi
- \*\*\* 2500 psi



## Accessories For DVA20/35 and DVG20/35

Code	Anti-Cavitation Check	Port Relief Valve Plug
DV-	AC	PRVP

## Valve Work Port Plugs For all valve series

Code	NPT Plugs					SAE Plugs					
	1/2"	3/4"	1"	1 1/4"	1 1/2"	SAE-8	SAE-10	SAE-12	SAE-16	SAE-20	SAE-24
DV-DPL-	50	75	100	125	150	8	10	12	16	20	24

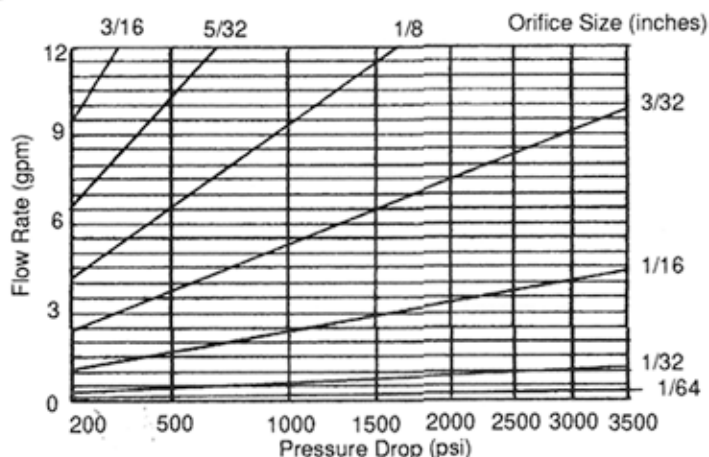
SAE PLUGS INCLUDE "O" RING



## Work Port Restrictors

Code	Description
DV-PRT-8	For SAE-8 Work Port
DV-PRT-10	For SAE-10 Work Port
DV-PRT-12	For SAE-12 Work Port
DV-PRT-16	For SAE-16 Work Port

Restrictors are furnished without orifices.  
See chart for orifice drill size.





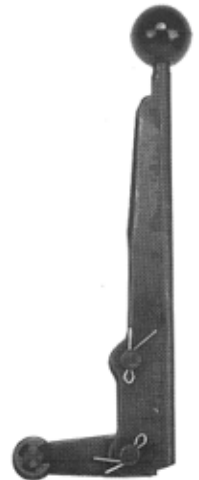
## Handle Assembly

For DVA20/35 and DVG20/35

A=Old Style Handle W/ VA Linkage

VA=New Style Handle W/ VA Linkage

Lever Length	6"		8"		10"		Linkage Kits Handle to Valve			
Handle Style	A	VA	A	VA	A	VA	A to VA	VA to A	VA to VA	A to A
Code										
DV20-	H-3	H-6	H-4	H-8	H-5	H-10	HK-1	HK-2	HK-5	HK-7
DV35-	H-3	H-6	H-4	H-8	H-5	H-10	HK-3	HK-4	HK-6	HK-8



## Work Section -- Spool Actuation Kits

For DVA20/35 and DVG20/35

Code	Spring Return	3-Position Detent	Rotary Control	Air Shift	Metering Hydraulic Remote Control	On / Off Pilot Operated	Single-Ended D. A. Solenoid 12 VDC	Double-Ended D.A. Solenoid 12VDC	Detent IN Spring Ret'n OUT	Detent OUT Spring Ret' IN	Single Ended DA Solenoid 24 v
DV20-	K-100	K-101	K-102	K-113	K-109	K-110	K-106	K-111	K-107	K-108	K112
DV35-	K-200	K-201	K-202	K-213	K-209	K-210	K-206	K-211	N/A	N/A	K212



These kits are for LH assemblies ONLY. RH kits are NOT AVAILABLE

## Seal Kits

For DVA20/35 and DVG20/35

Code	Work Section Assembly Kit	Work Section Repair Kit	Port R/V Without A/C Seal Kit	Port R/V With A/C Seal Kit	Main R/V Repair Kit	Main R/V Seal Kit
DV20-	K-1	K-2	K-3	K-3-1	K-4	K-5
DV35-	K-11	K-12	K-3	K-3-1	K-14	K-15
Kit Contains	Section Seals	Section, Spool and Check Seals	All Replaceable Seals	All Replaceable Seals	All Replaceable Seals & Cartridge Body	All Replaceable Seals



## Spools

For DVA20/35, DVG20/35 and DVG18

Code	Description
DV20-SPL-1	4-Way 3-Position Hold in neutral Standard
DV20-SPL-3	4-Way 3-position Float in neutral Standard
DV20-SPL-5	3-Way 3-Position Hold in neutral Standard
DV20-SSPL-1	4-Way 3-Position Hold in neutral Standard (MARINE)
DV20-SSPL-3	4-Way 3-Position Float in neutral Standard (MARINE)
DV35-SPL-11	4-Way 3-Position Hold in neutral Standard
DV35-SPL-13	4-Way 3-position Float in neutral Standard
DV35-SPL-15	3-Way 3-Position Hold in neutral Standard
DV35-SSPL-11	4-Way 3-Position Hold in neutral Standard (MARINE)
DV35-SSPL-13	4-Way 3-Position Float in neutral Standard (MARINE)
DVG18-SPL-21	4-Way 3-Position Hold in neutral Standard
DVG18-SPL-23	4-Way 3-position Float in neutral Standard
DVG18-SPL-25	3-Way 3-Position Hold in neutral Standard
DVG18-SPL-26	3-Way 3-Position Float in neutral Standard
DVG18-SSPL-21	4-Way 3-Position Hold in neutral Standard (MARINE)
DVG18-SSPL-23	4-Way 3-Position Float in neutral Standard (MARINE)
DVG18-LFSPL-21	4-Way 3-Position Hold in neutral Low Flow
DVG18-LFSPL-23	4-Way 3-position Float in neutral Low Flow
DVG18-LFSPL-25	3-Way 3-Position Hold in neutral Low Flow

DV35-SPL-11



DV35-SPL-13



DV20-SPL-3

