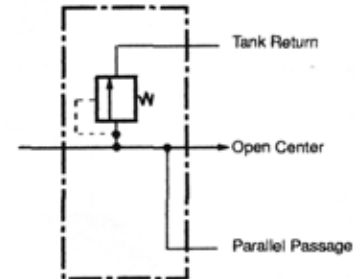


Inlets (3500 psi)

Code	End Port HP	Top Port HP	End Port LP	Top Port LP
DVG80-A0404	NONE	1 1/2"SF	NONE	1 1/2"SF
DVG80-A0808	NONE	SAE-24	NONE	SAE-24
DVG80-A4040	1 1/2"SF	NONE	1 1/2"SF	NONE
DVG80-A8080	SAE-24	NONE	SAE-24	NONE
DVG80-A0000	NON-PORTED HOUSING			



Schematic shown has main R/V

NOTE: Inlets are machined for a main R/V or R/V plug and are furnished with plastic closures

See Section G for inlet port plugs... Page 32



Adjustable Relief Valves

Code	Description
DVG80-MRV	Main R/V pressure range 500-3500 psi. Factory set @ 2000 psi @ 80 gpm
DVG80-MRVP	Main relief valve plug

Outlet Sections

Code	End Port LP	Top Port LP	End Port HP	Top Port HP
DVG80-TRC0404	NONE	1 1/2"SF	NONE	1 1/2"SF
DVG80-TRC0808	NONE	SAE-24	NONE	SAE-24
DVG80-TRC4040	1 1/2"SF	NONE	1 1/2"SF	NONE
DVG80-TRC8080	SAE24	NONE	SAE-24	NONE
DVG80-TRC0000	Non-Ported housing			
DVG80-PBS	PRESSURE BEYOND SLEEVE			

Note: The PBS Sleeve converts a tank return outlet to pressure beyond.

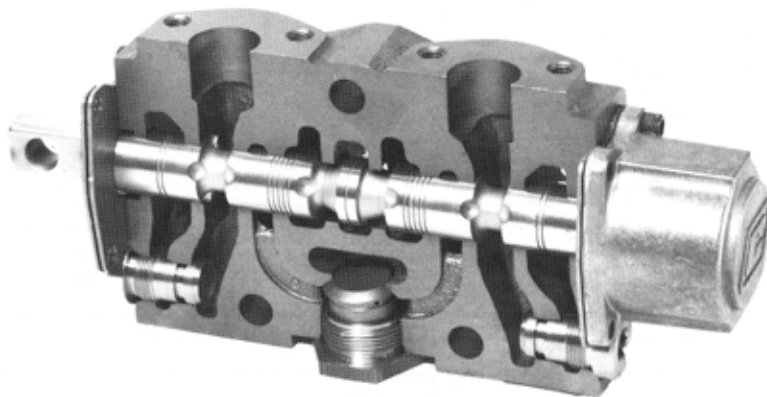
All TRC outlets are machined to accept PBS sleeves.

Hi-Boy Work Sections -- Parallel Circuits

Sections have port relief valve machining.
Furnished with plastic closures

Code	4-Way 3-Position Hold in Neutral	3-Way 3-Position Hold in Neutral	4-Way 3-Position Float in Neutral	Port Size SAE-20	Port Size 1" SF	Port Size 1 1/4" SF	Work Port NOT Machined	Spring Return	3-Position Detent	Metered Hydraulic Remote Control
DVG80-HA055	•						•	•		
DVG80-HA255	•				•			•		
DVG80-HA355	•					•		•		
DVG80-HA755	•			•				•		
DVG80-HB755	•			•					•	
DVG80-HX355	•					•				•
DVG80-HX755	•			•						•
DVG80-LA055			•				•	•		
DVG80-LA255			•		•			•		
DVG80-LA355			•			•		•		
DVG80-LA755			•	•				•		
DVG80-LB755			•	•					•	
DVG80-LX355			•			•				•
DVG80-LX755			•	•						•
DVG80-JA205		•			•			•		
DVG80-JA305		•				•		•		
DVG80-JA705		•		•				•		

DVG80
Manually controlled
Spring returned section
4-Way – 3-Position
Hold in neutral



Port Relief Valves

Code	Screw Adjustable Port R/V With A/C	A/C Only	Plug
DV	-PRVAC	-AC	-PRVP



Stud Kits

Code	Number of sections between inlet and outlet					
	1	2	3	4	5	6
DVG80-	SK-1	SK-2	SK-3	SK-4	SK-5	SK-6

Torque to 1800 inch pounds

Stud Specifications are Grade 8



Work Section Spool Actuator Kits

Code	Spring Return	3-Position Detent	Metered Hydraulic Remote Control
DV80-	K-300	K-301	K-309

Seal Kits

Code	Work Section Assembly Kit	Work Section Repair Kit	Main RV Repair Kit
DV80-	K-21	K-22	K-24
Kit Contains	Section Seals	Section, Spool and Check Seals	All Replaceable Seals