

## HIGH FLOW FC FLOW CONTROL (FC51) INSTALLATION & USER GUIDE

### **SPECIFICATIONS:**

- Rated for 3000 psi (207 bar).
- Weighs 28 – 3/4 lbs. (13.0 kg).
- 30-Micron Filtration Recommended.
- Torque to turn side lever spool.  
40 in\*lbs (4.5Nm) with 3000 (207 bar) psi on CF port or the EX port.

### **FEATURES:**

- **CF port (Controlled Flow)** - Flow coming from the CF port is pressure compensated and proportional to the side lever rotation. Flow can vary from closed to wide open.
- **EX port (Excess Flow)** - Flow coming from the EX port is also pressure compensated. Note: When side lever is set to 0, entire flow will exit valve via EX port.

### **MOUNTING INSTRUCTIONS:**

- **Mounting** – Valve can be mounted in any orientation. Valve must be mounted on a flat surface with a recessed area for the side lever spool. Special attention should be paid to not bend or twist the casting when mounting. Doing so may cause the compensator spool to bind, causing valve to fail.

### **FREQUENTLY ASKED QUESTIONS:**

**Q:** Can the CF port be blocked or plugged?

**A:** No. If the CF port is blocked or plugged for any reason the compensation spool will attempt to compensate for increasing pressure, and shift, thus blocking the EX port as well, and rendering valve inoperable. **DO NOT BLOCK CF PORT.**

**Q:** Can the EX port be blocked or plugged?

**A:** The EX port can be blocked or plugged, but doing so requires a pressure compensated or load sense pump.

**Q:** Can flow be sent in reverse through valve.

**A:** It is not recommended to send flow in reverse, as it will cause valve to become inoperable.

**Q:** Can I add a relief to my large FC51 valve?

**A:** The large FC is unable to have a relief installed.

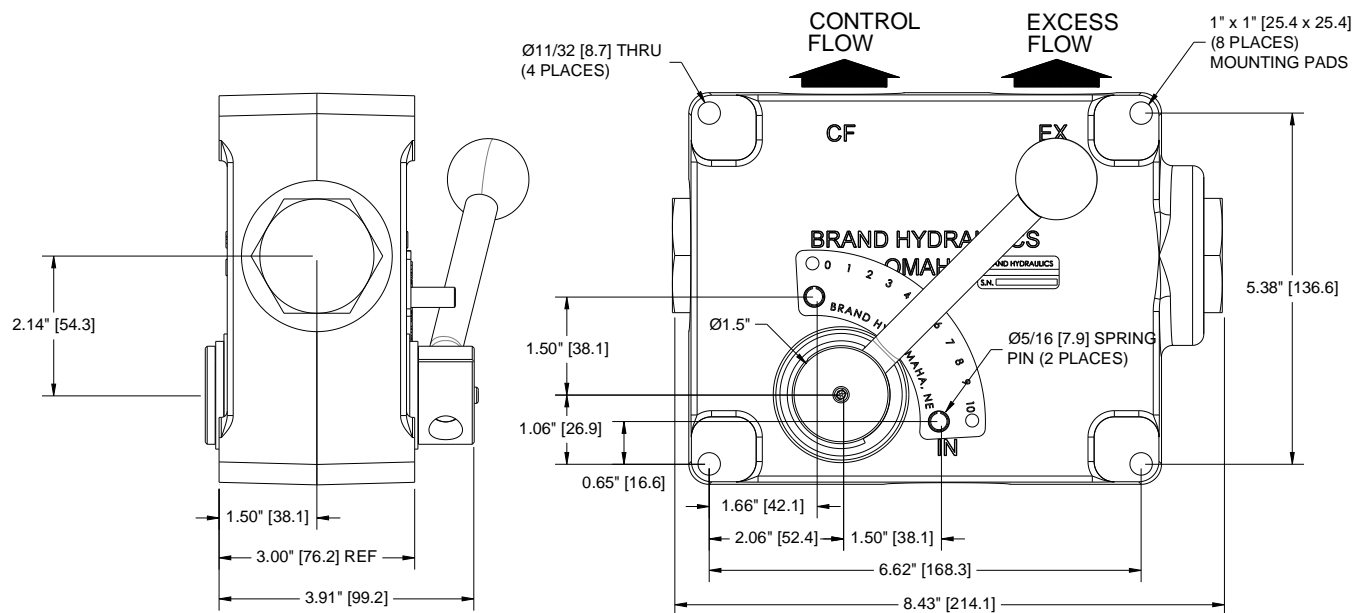
**Q:** What kits are available for this valve?

**A:** There is a replacement seal kit for the FC51 (Part # LFC-K).

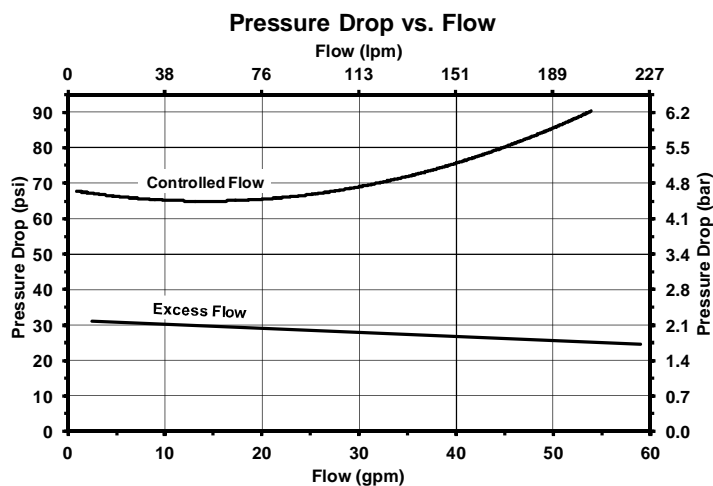
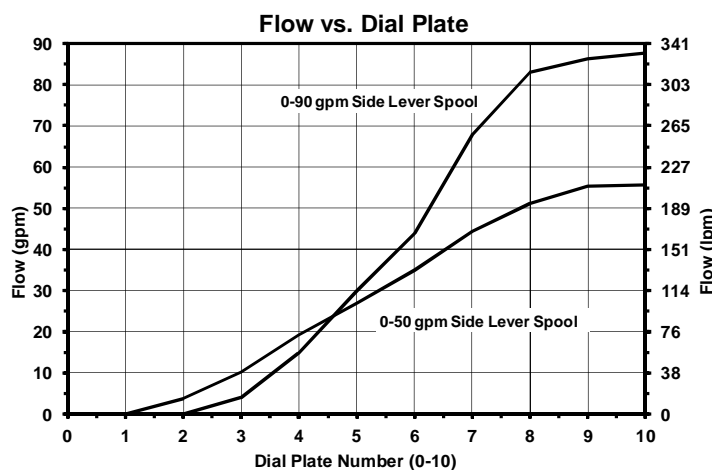
### **GENERAL INFORMATION:**

**Pipe Thread Sealant** - Warranty is void when Teflon tape is used to seal pipe threads. This is because Teflon tape is a friction reducing agent which allows customers to over-torque fittings. We recommend using a sealant that does not include friction reducing agents i.e. Lead Plate.

## DIMENSIONAL DATA:



## FLOW & PRESSURE INFORMATION:



## **SAFETY PRECAUTIONS**

- It is the purchaser's responsibility to determine the suitability of any Brand Hydraulics Co. product for an intended application, and to ensure that it is installed in accordance with all federal, state, local, private safety and health regulations, codes and standards. Due to the unlimited variety of machines, vehicles and equipment on which our products can be used, it is impossible for Brand Hydraulics Co. to offer expert advice on the suitability of a product for a specific application. It is our customer's responsibility to undertake the appropriate precautions, testing and evaluation to prevent injury to the end-user.
- Overpressure may cause sudden and unexpected failure of a component in the hydraulic system, resulting in serious personal injury or death. Always use a gauge when adjusting a relief valve.