

GAS ENGINE ADAPTERS

LB152 FLANGE

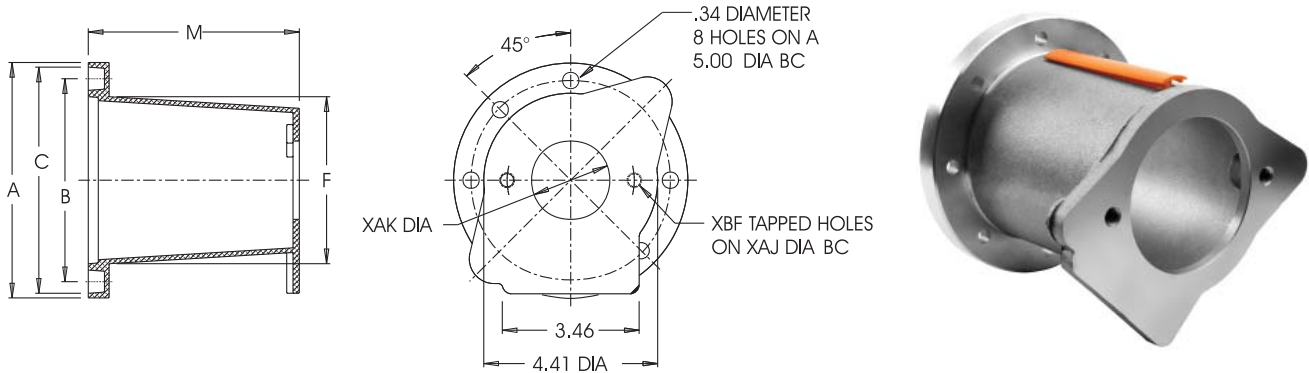
Pump Gas Engine Adapters (Bell Housings) are designed to assure proper shaft alignment between the gasoline engine and your hydraulic pump. They also reduce assembly cost over using a foot mounting bracket or riser.

Standard Features:

- Light weight - High strength
- Drive coupling access hole
- Safety orange removable cover for coupling access hole
- Gas Engine Adapters are designed to be used with gas engines with horizontal shafts only.

Standard Material:

- Cast Aluminum



NOTE: All dimensions are inches.

Gas Engine Adapter - LB152 Flange (inches)

Part No.	Pump Type	Pump Mounting Flange	XAJ Bolt Circle	XAK Pump Pilot	XBF Mounting Holes (NC)	Dimensions				M Face to Face
						A	B	C	F	
LB152825A	SAE A	2 Bolt	4.19	3.25	3/8-16	5.98	5.00	5.74	4.33	5.59

Dimensions and specifications are subject to change without notice. Not all items are Made-To-Stock, contact us for availability.

02/14

Ph : 920-682-6877
Fx : 920-684-7210

LDI Industries

sales@ldi-industries.com
www.ldi-industries.com