

Model LD2

Lock Valve Pilot Operated Check

50 GPM (Nominal), 3000 PSI, SAE 16 Ports

Lock valves are designed to lock a cylinder, or part of a circuit, without leakage while the control valve is in neutral position. Lock valves function as check valves, allowing flow to a cylinder and blocking reverse flow until pilot pressure is applied to "unlock" the circuit.

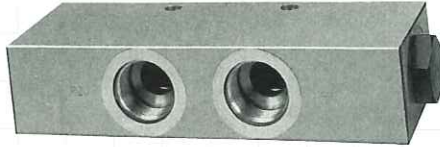
Model LD2 lock valves incorporate a two-stage poppet design which minimizes shock. These valves provide prolonged holding of cylinder position and smooth operation throughout the entire pressure range.

SAE ports and viton seals are standard on single and double valves.

Single



Double



SPECIFICATIONS

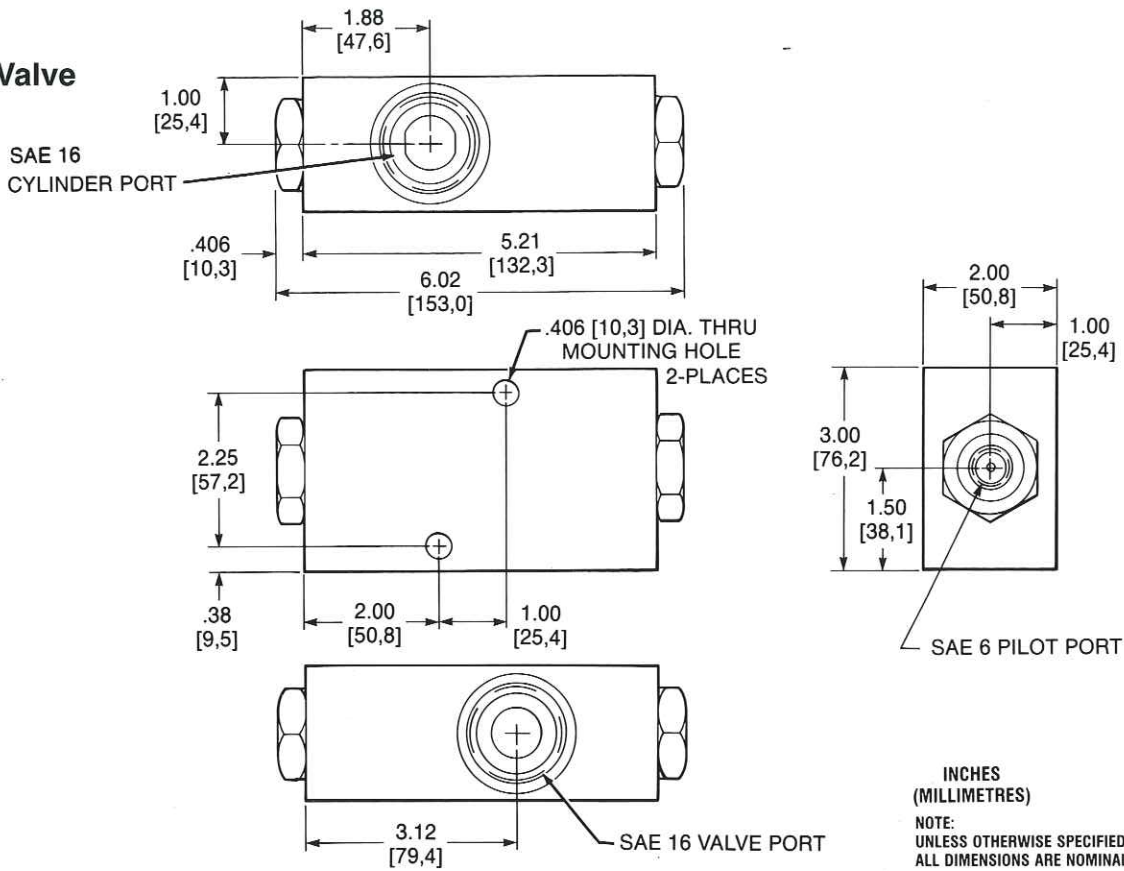
- **Flow Rating** (nominal) 50 GPM [190 litres/min.]
- **Pressure Rating** (maximum) 3000 PSI [207 bar]
- **Temperature** Under normal conditions of continuous operation, fluid temperature should not exceed 200°F [93°C]. For temperatures above 200°F [93°C] contact the factory.
- **Fluid Recommendations** Compatible with all petroleum base fluids and most fire resistant fluids. For information on specific fluid compatibility, contact the factory.
- **Seals** Viton seals are standard in single and double valves to allow operation with petroleum base fluids and most fire resistant fluids.
- **Filtration** For minimum leakage, 10 micron filtration is recommended.
- **Mounting Position** Not restricted
- **Material** All steel
- **Decompression Ratio** (nominal) 12:1
- **Opening Ratio** 1:1
- **Weights** (approx.) Single Valve — 6 lbs. [2,72 kg]; Double Valve — 10 lbs. 8 oz. [4,76 kg]

GRESEN®



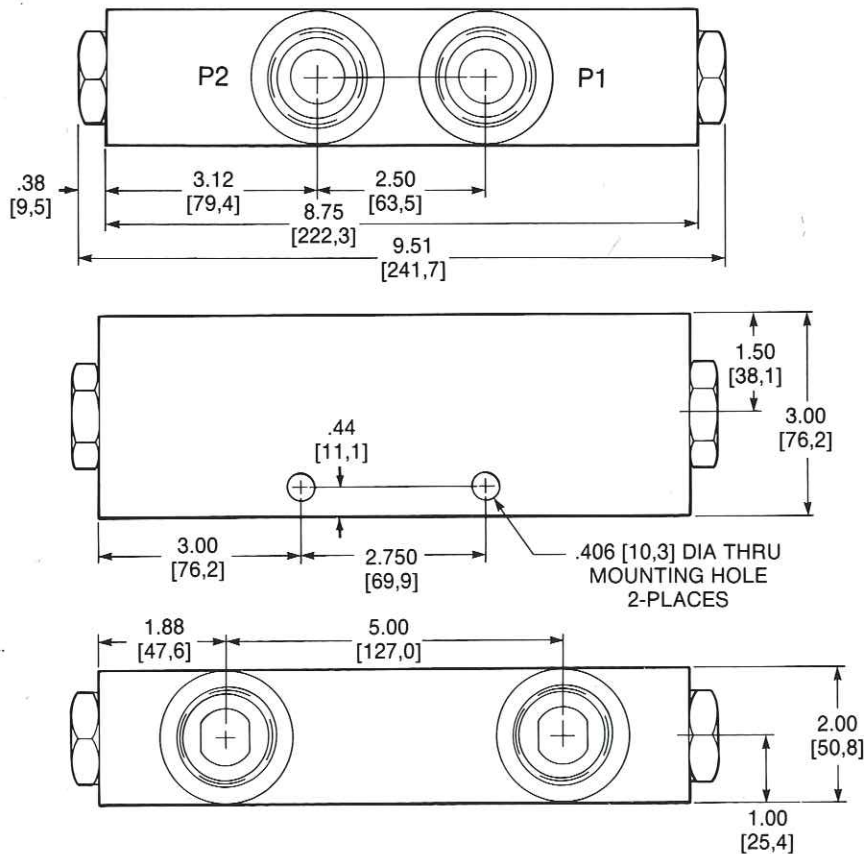
DIMENSIONS

Single Valve



INCHES
(MILLIMETRES)
NOTE:
UNLESS OTHERWISE SPECIFIED
ALL DIMENSIONS ARE NOMINAL.

Double Valve

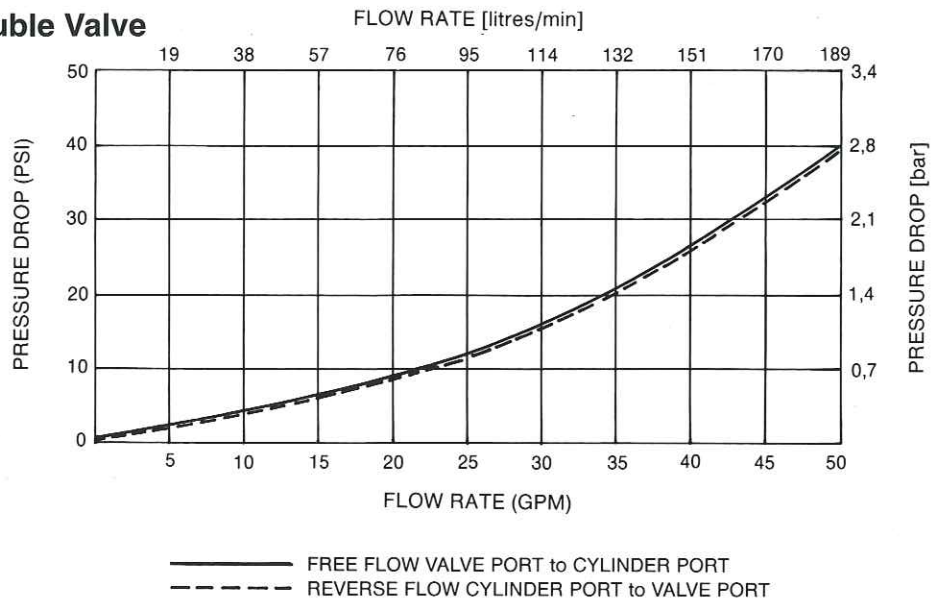


INCHES
(MILLIMETRES)
NOTE:
UNLESS OTHERWISE SPECIFIED
ALL DIMENSIONS ARE NOMINAL.

PRESSURE DROP CURVES

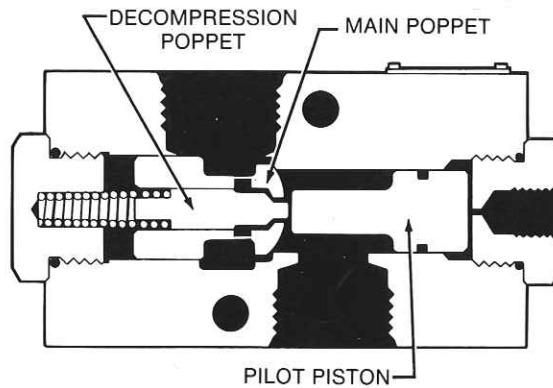
Single and Double Valve

Single and Double Valve

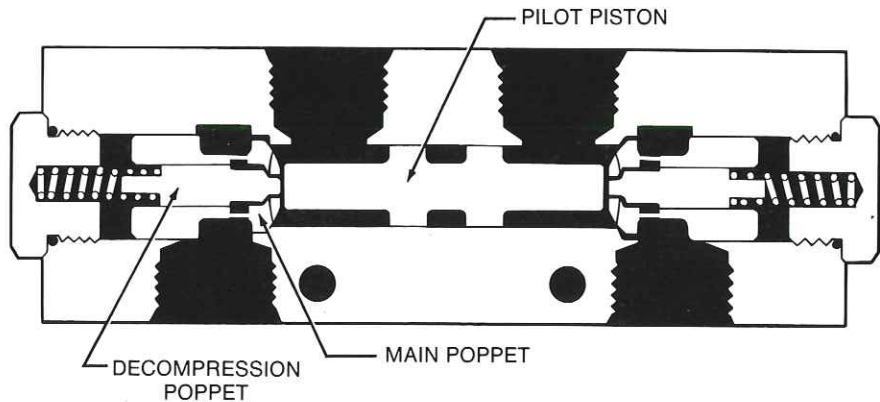


ILLUSTRATIONS

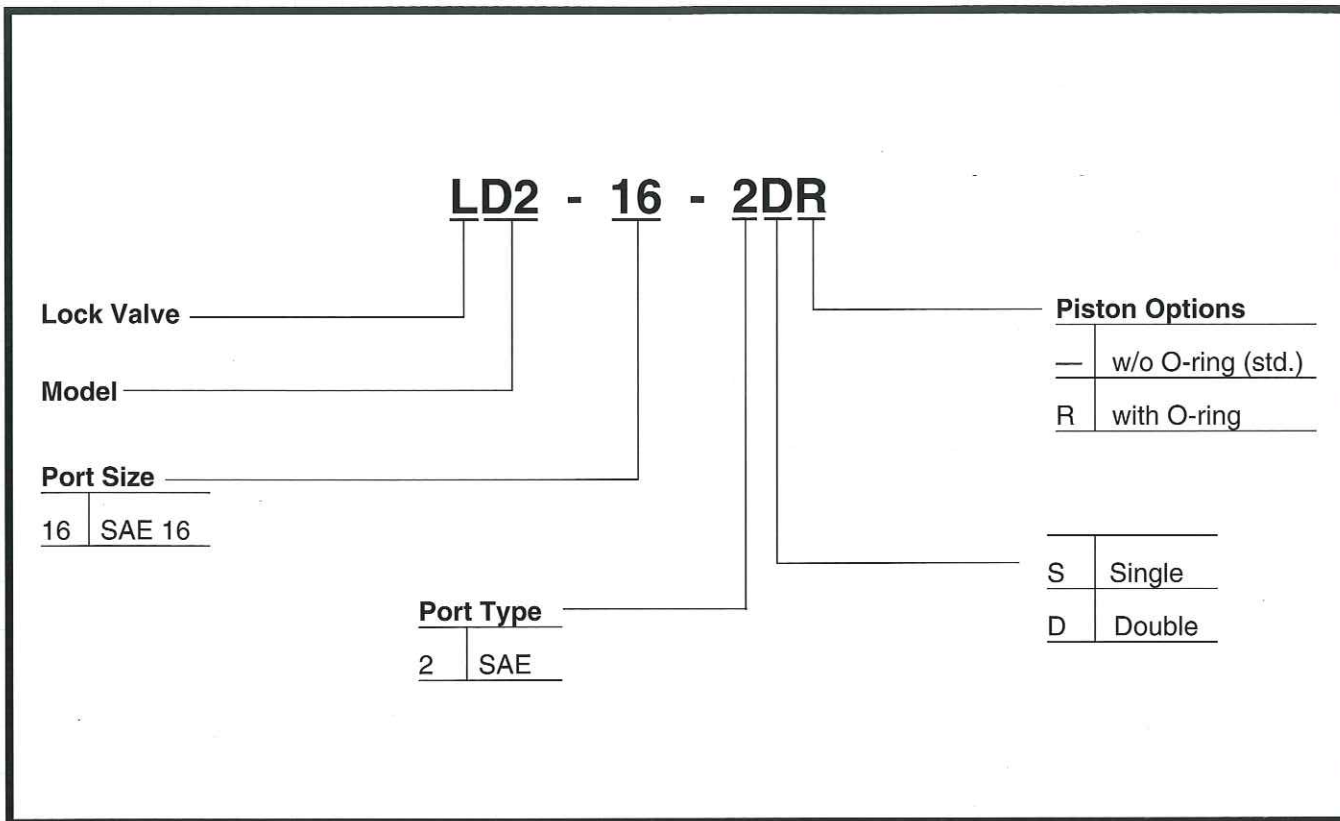
Single Valve



Double Valve



ORDER CODE



GRESEN®



GRESEN HYDRAULICS DIVISION • DANA CORPORATION
4675 CLARK ROAD, SARASOTA, FL 34233 • PHONE 941-921-2380 • FAX 941-921-8519

People Finding A Better Way™



CATALOG NO. GP-4011
Rev. 10/94 Printed in U.S.A
Copyright © 1994 Dana Corporation