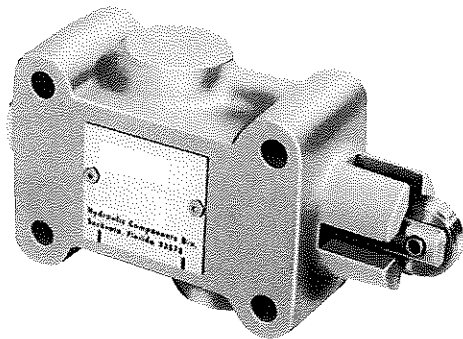


GRESEN®



Engineering Data



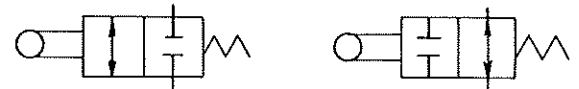
DIRECTIONAL CONTROL

2-WAY VALVE

1/4"

3000 PSI
6 GPM

CAM OPERATED
FOOT MOUNTED
SUBPLATE MOUNTED



SYMBOL

SPECIFICATIONS

PRESSURE RATING--3000 psi (207 bar; 20,700 kPa)

FLOW RATING--6 gpm (23 L/min)

FLUID RECOMMENDATIONS--Premium grade hydraulic fluid with 60 SUS (10cSt) to 1000 SUS (216cSt) viscosity at operating temperature.

THROTTLING SPOOLS--Throttling spools are standard to allow for less shock in opening and closing of valve.

SEALS--High pressure slipper seals - no drain line required. Rod wiper is standard. Viton seals are standard to allow operation with petroleum based fluids and most fire resistant fluids.

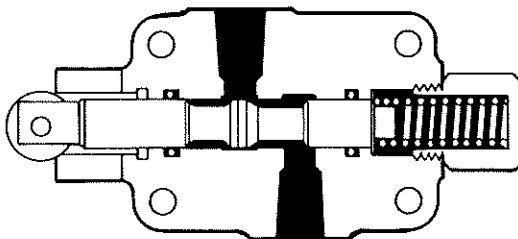
TEMPERATURE--Under normal conditions of continuous operation, fluid temperature should not exceed 180°F (82°C). In no instance, should temperature exceed 200°F (93°C).

APPLICATION--Stainless roller and plated stem are standard for extra protection in outdoor use.

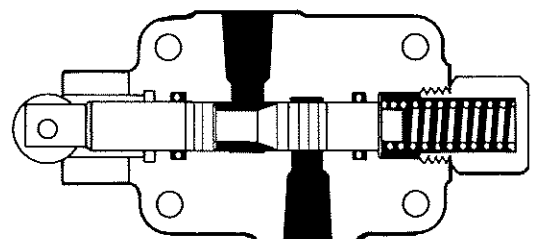
MATERIAL--Body - Cast Iron
Internal Components - Steel

WEIGHT (Approx.)--2 pounds 6 ounces (1.1 kg)

PICTORIALS

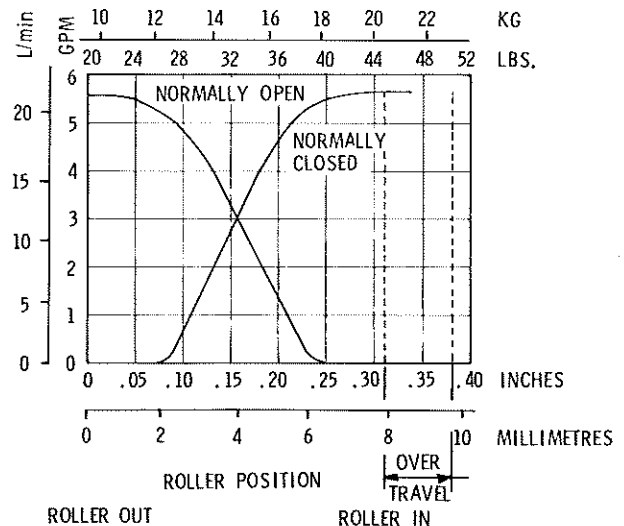
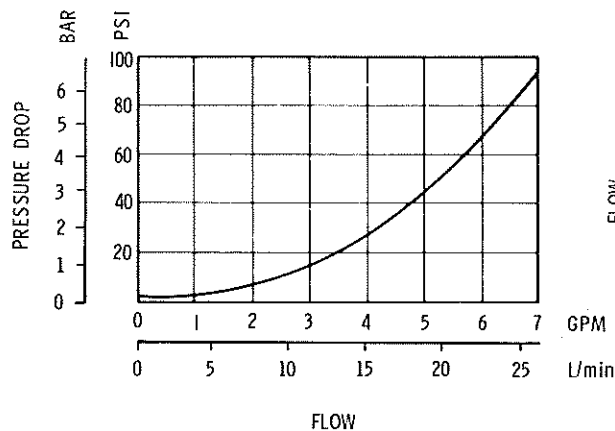


NORMALLY OPEN

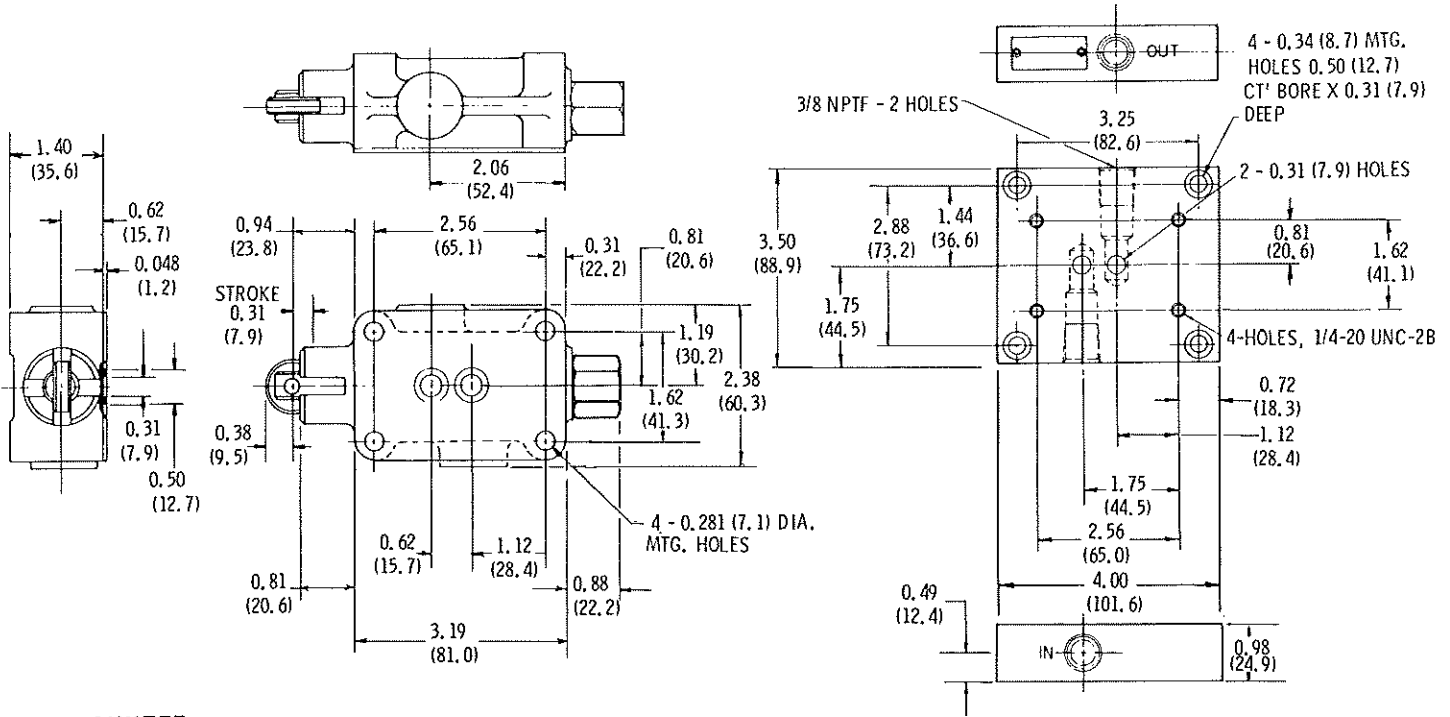


NORMALLY CLOSED

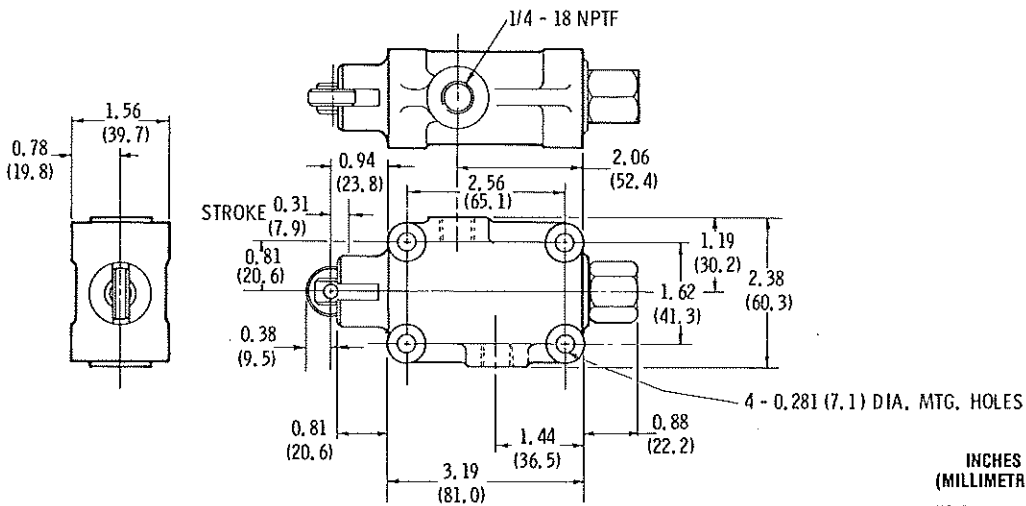
PERFORMANCE CHARACTERISTICS



DIMENSIONAL DATA - SUBPLATE MOUNTED

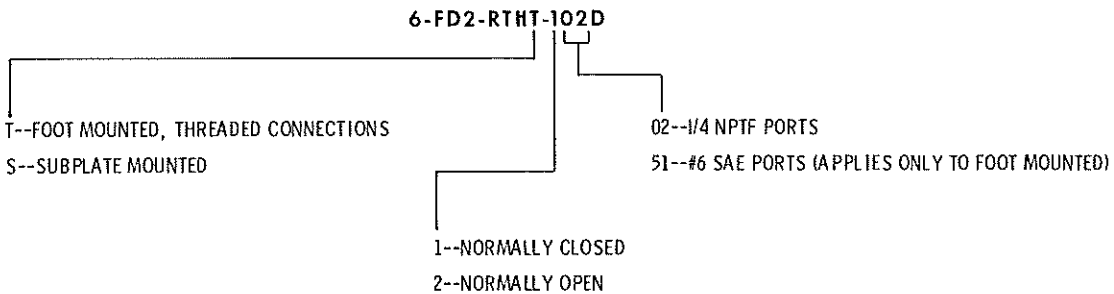


FOOT MOUNTED



INCHES
(MILLIMETRES)
NOTE:
UNLESS OTHERWISE SPECIFIED
ALL DIMENSIONS ARE NOMINAL.

HOW TO ORDER



MA Series

GRESEN®



GRESEN HYDRAULICS DIVISION • DANA CORPORATION
4675 CLARK ROAD, SARASOTA, FL 34233 • PHONE 941-921-2380 • FAX 941-921-8519

People Finding A Better Way



CATALOG NO. MC-5
Rev. 8/87 Printed in U.S.A
Copyright © 1987 Dana Corporation

