

MODULAR CHECK VALVE

MC-02 SERIES

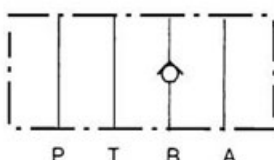
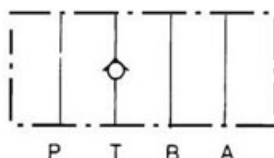
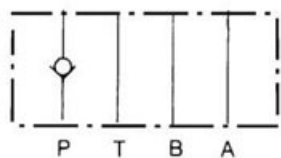


FEATURES

- The modular check valve will allow free flow in one direction and block flow in the opposite direction. It may be specified to operate on the P, T, A, or B port with a 7 PSI or 50 PSI cracking pressure.

As a modular valve, this valve mounts between an NFPA D03 size directional control valve and the sub-plate. A longer than standard bolt kit is required when mounting modular valves in a stack. Refer to bolt kits.

Symbol



Model Code

MC - 02 P - 05 - **

1 2 3 4 5

1 **Series**

MT: Modular Check Valve

2 **Mounting Style**

02: NFPA Size D03

3 **Function Port**

P: P Port

T: T Port

A: A Port

B: B Port

4 **Cracking Pressure**

05: 0.5 BAR (7 PSI)

50: 3.5 BAR (50 PSI)

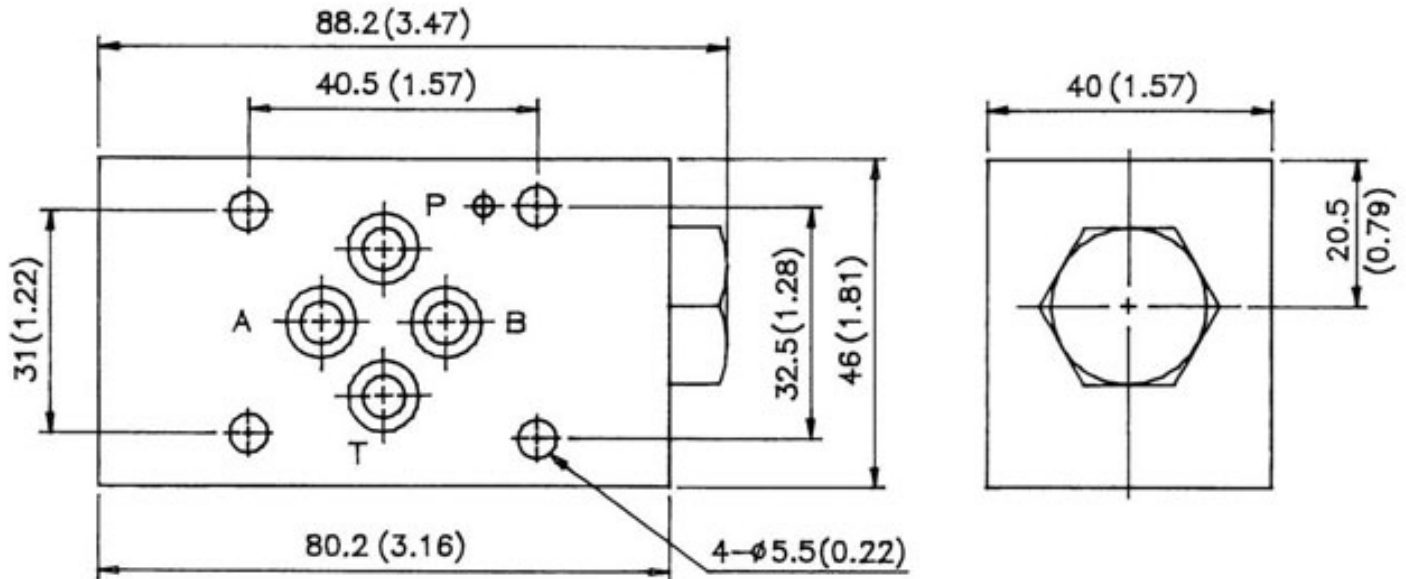
5 **Design Number**

MODULAR CHECK VALVE MC-02 SERIES

DIMENSIONS

UNIT: mm(inch) WEIGHT: 1.5 kgs(3.3 lbs) Mounting Surface: ISO 4401-AB-03-4-A

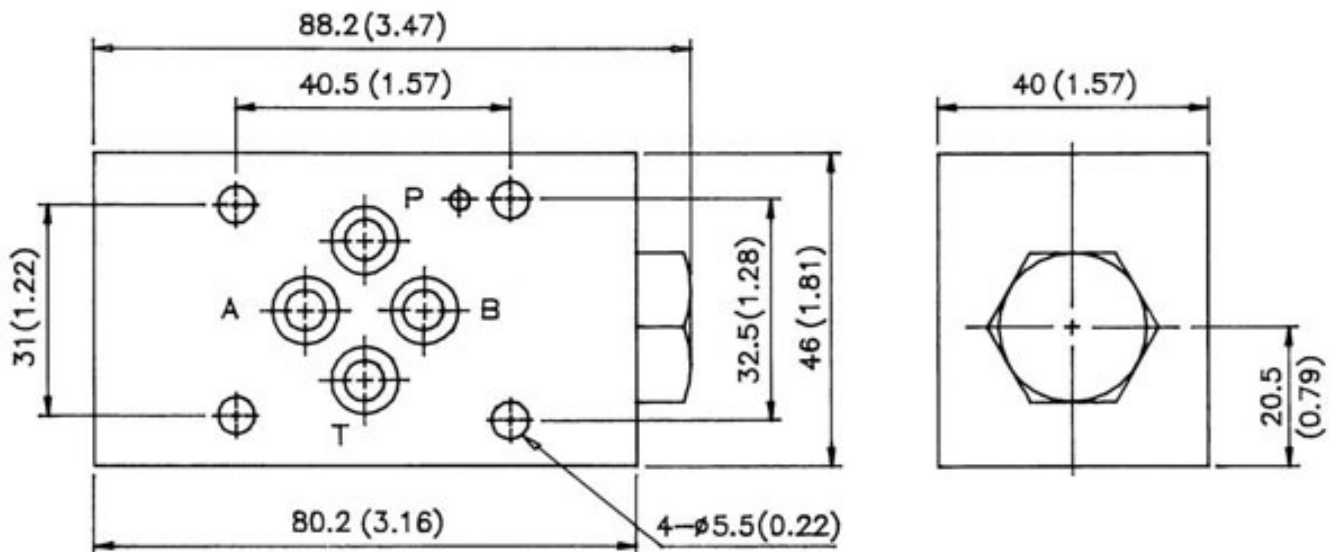
MC-02P- ** -40



DIMENSIONS

UNIT: mm(inch) WEIGHT: 1.5 kgs(3.3 lbs) Mounting Surface: ISO 4401-AB-03-4-A

MC-02T- ** -40

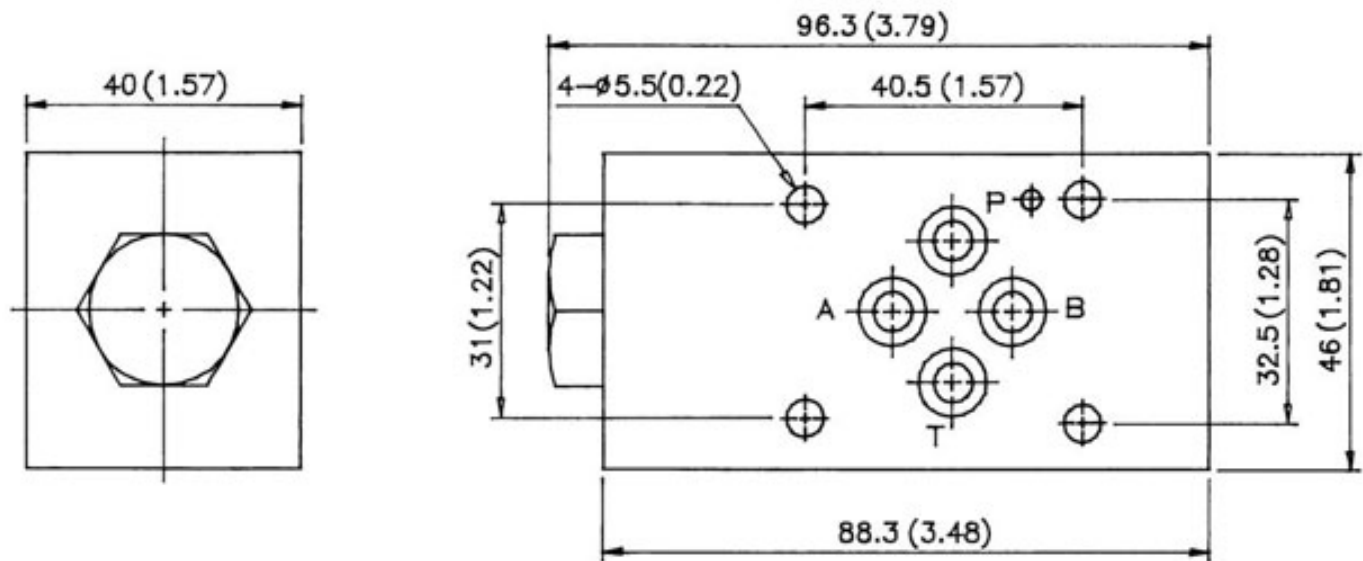


MODULAR CHECK VALVE MC-02 SERIES

DIMENSIONS

UNIT: mm(inch) WEIGHT: 1.5 kgs(3.3 lbs) Mounting Surface: ISO 4401-AB-03-4-A

MC-02A- ** -40



DIMENSIONS

UNIT: mm(inch) WEIGHT: 1.5 kgs(3.3 lbs) Mounting Surface: ISO 4401-AB-03-4-A

MC-02B- ** -40

