

# MODULAR PILOT CHECK VALVE

## MPC-02 SERIES

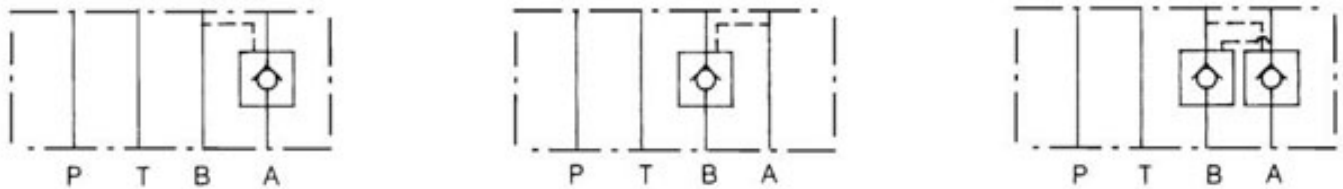


### FEATURES

•The modular pilot-operated check valve will allow free flow in one direction and block flow in the opposite direction. It functions to positively hold the actuator in a neutral position. Movement is restored by an automatic pilot pressure signal when the directional control valve shifts to move the actuator. It may be specified to operate on the A, B, or A & B port.

As a modular valve, this valve mounts between an NFPA D03 size directional control valve and the subplate. A longer than standard bolt kit is required when mounting modular valves in a stack. Refer to bolt kits.

### Symbol



### Model Code

**MPC – 02 W – 50 – \*\***

1            2   3            4            5

**1 Series**  
**MPC:** Modular Pilot  
 Check Valve

**2 Mounting Style**  
**02:** NFPA Size D03

**3 Function Port**  
**A:** A Port  
**B:** B Port  
**W:** A & B Ports

**4 Cracking PSI**  
**50:** 50 PSI (3.5 BAR)

**5 Design Number**

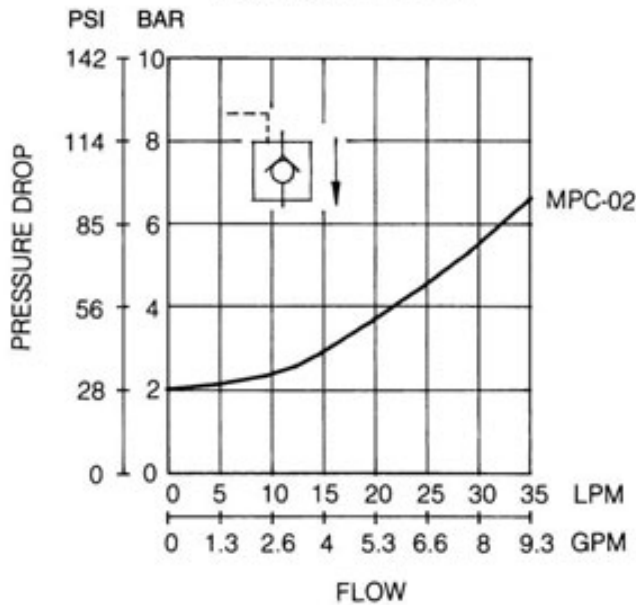
# MODULAR PILOT CHECK VALVE MPC-02 SERIES

## SPECIFICATIONS

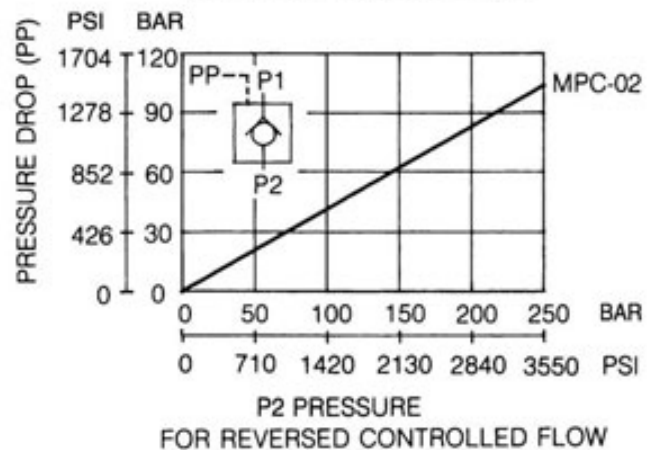
MAX. OPERATING PRESSURE      250 BAR (3675 PSI)  
 MAX. FLOW CAPACITY            35 LPM (9.3 GPM)

Internal Leakage: 0.1 cc/minute (2 drops/minute) MAX. at 207 BAR(3000 PSI).

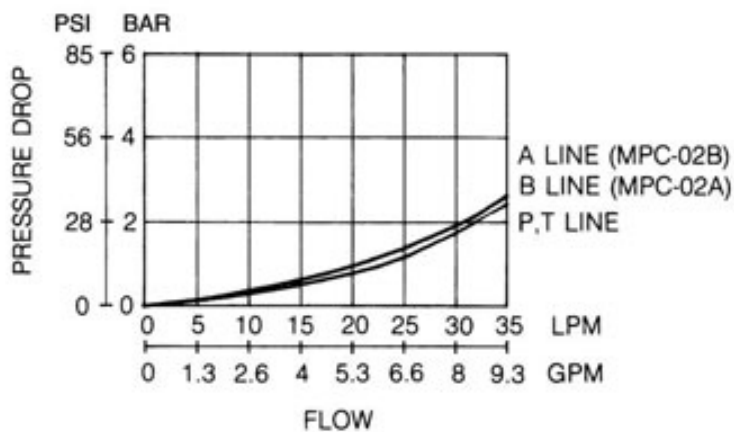
**PRESSURE DROP  
FOR FREE FLOW**



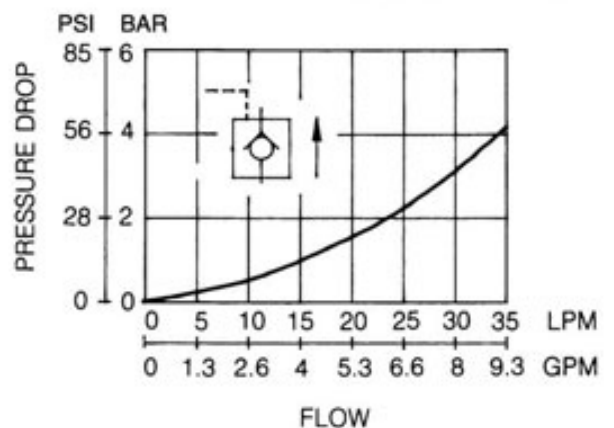
**MIN. PILOT PRESSURE**



**PRESSURE DROP**



**PRESSURE DROP FOR  
REVERSE CONTROLLED FLOW**



# MODULAR PILOT CHECK VALVE

## MPC-02 SERIES

### DIMENSIONS

UNIT: mm(inch) WEIGHT: 1.5 kgs(3.3 lbs) Mounting Surface: ISO 4401-AB-03-4-A

MPC-02- \* -40

