

MODULAR PILOT CHECK VALVE
MPC-04 SERIES

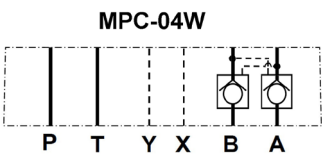


FEATURES

- The modular pilot-operated check valve will allow free flow in one direction and block flow in the opposite direction. It functions to positively hold the actuator in a neutral position. Movement is restored by an automatic pilot pressure signal when the directional control valve shifts to move the actuator. It operates on the A & B ports.

As a modular valve, this valve mounts between an NFPA D07 size directional control valve and the subplate. A longer than standard bolt kit is required when mounting modular valves in a stack. Refer to bolt kits.

Symbol



Model Code

MPC – 04 W – 50 – **

1 2 3 4 5

1 **Series**
MPC: Modular Pilot
Check Valve

2 **Mounting Style**
04: NFPA Size D07

3 **Function Port**
W: A & B, Meter-Out

4 **Spring**
50: Spring PSI

5 **Design Number**

MODULAR THROTTLE AND CHECK VALVE MT-04 SERIES

SPECIFICATIONS

MAX. OPERATING PRESSURE	250 BAR (3675 PSI)
MAX. FLOW CAPACITY	190 LPM (50 GPM)

DIMENSIONS

MPC-04W

Inch (mm)

