

MODULAR PILOT CHECK VALVE

MPC-06 SERIES

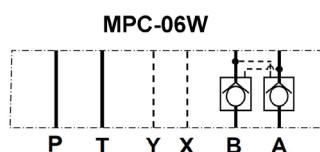


FEATURES

- The modular pilot-operated check valve will allow free flow in one direction and block flow in the opposite direction. It functions to positively hold the actuator in a neutral position. Movement is restored by an automatic pilot pressure signal when the directional control valve shifts to move the actuator. It operates on the A & B ports.

As a modular valve, this valve mounts between an NFPA D08 size directional control valve and the subplate. A longer than standard bolt kit is required when mounting modular valves in a stack. Refer to bolt kits.

Symbol



Model Code

MPC – 06 W – **

1

2

3

4

1 **Series**

MPC: Modular Pilot
Check Valve

3 **Function Port**

W: A & B Ports

2 **Mounting Style**

06: NFPA Size D08

4 **Design Number**

Note: Inquire for availability of other port options.

MODULAR THROTTLE AND CHECK VALVE MPC-06 SERIES

SPECIFICATIONS

MAX. OPERATING PRESSURE	250 BAR (3675 PSI)
MAX. FLOW CAPACITY	300 LPM (79 GPM)

DIMENSIONS

● MPC-06W

in (mm)

