

MODULAR PRESSURE REDUCING VALVE

MPR-03 SERIES

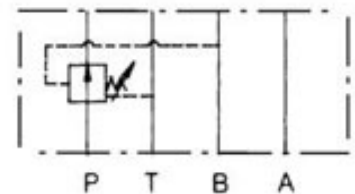
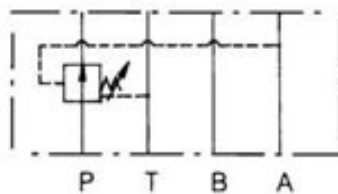
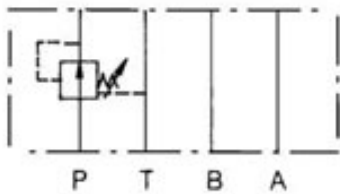


FEATURES

•The modular adjustable pressure reducing valve will ensure that the operating pressure in a branch of a hydraulic system will be maintained at a lower setting than that of the main system pressure. The valve functions on the selected P, A, or B port and is internally drained. Adjustment is made with a calibrated knob, standard with the valve.

As a modular valve, this valve mounts between an NFPA D05 size directional control valve and the sub-plate. A longer than standard bolt kit is required when mounting modular valves in a stack. Refer to bolt kits.

Symbol



Model Code

MPR - 03 P - K - 1 - ** - N

1

2

3

4

5

6

1 Series

MPR: Modular Pressure Reducing Valve

2 Mounting Style

03: NFPA Size D05

3 Function Port

P: P Port

A: A Port

B: B Port

4 Adjustment Style

K: Adjusting Knob

5 Pressure Adj. Range

0: 1.5-35 BAR (20-500 PSI)

1: 8-70 BAR (120-1000 PSI)

2: 35-40 BAR (500-2000 PSI)

3: 70-210 BAR (1000-3000 PSI)

6 Design Number

MODULAR PRESSURE REDUCING VALVE

MPR-03 SERIES

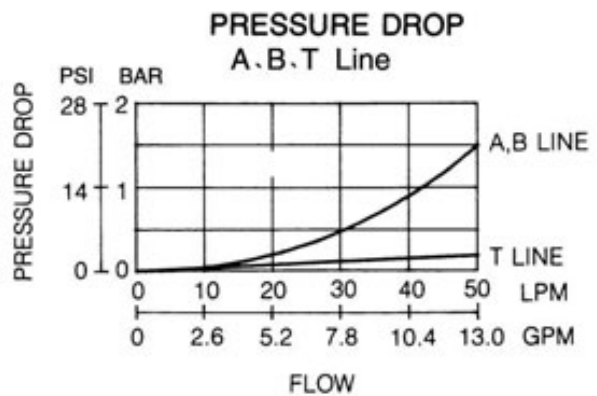
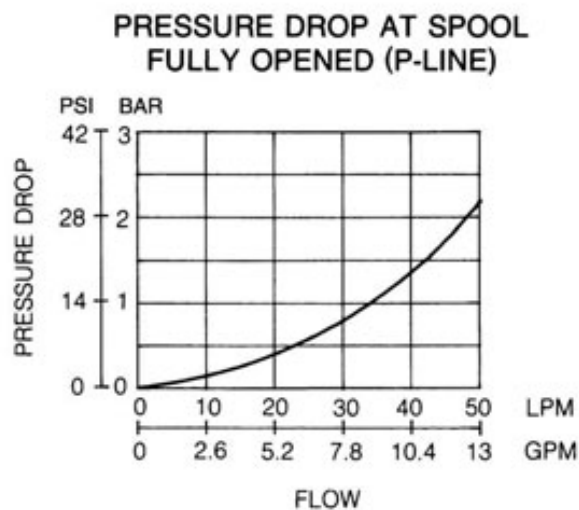
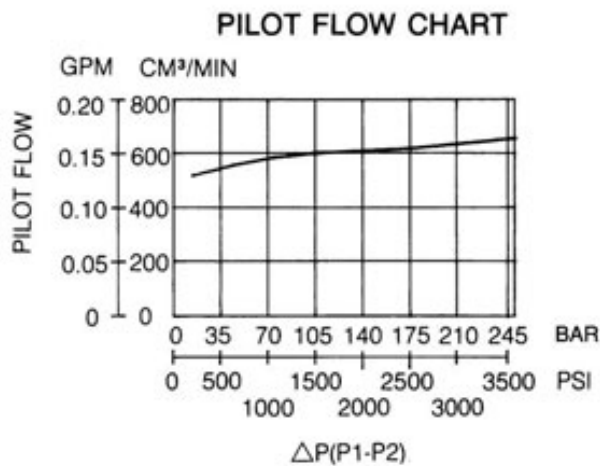
SPECIFICATIONS

MAX. OPERATING PRESSURE	250 BAR (3675 PSI)
MAX. FLOW CAPACITY	35 LPM (9.3 GPM)

PERFORMANCE CURVES

TEST CONDITIONS

Viscosity: 35 cSt (175 SSU) Temperature: 50° C (122° F)



MODULAR RELIEF VALVE

MPR-03 SERIES

DIMENSIONS

UNIT: mm(inch) WEIGHT: 1.5 kgs(3.3 lbs) Mounting Surface: ISO 4401-AB-03-4-A

MPR-03A/B/P-*-* -40

