

MODULAR PRESSURE REDUCING VALVE

MPR-04 SERIES

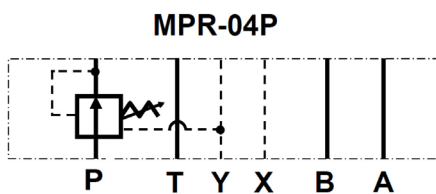


FEATURES

•The modular adjustable pressure reducing valve will ensure that the operating pressure in a branch of a hydraulic system will be maintained at a lower setting than that of the main system pressure. The valve functions on the P port and is internally drained. Adjustment is made with a calibrated knob, standard with the valve.

As a modular valve, this valve mounts between an NFPA D07 size directional control valve and the sub-plate. A longer than standard bolt kit is required when mounting modular valves in a stack. Refer to bolt kits.

Symbol



Model Code

MPR - 04 P - K - 2 - **

1
2
3
4
5
6

1 Series
MPR: Modular Pressure Reducing Valve

2 Mounting Style
04: NFPA Size D07

3 Function Port
P: P Port

4 Adjustment Style
K: Adjusting Knob

5 Pressure Adj. Range
2: 35-40 BAR (500-2000 PSI)

6 Design Number

MODULAR PRESSURE REDUCING VALVE

MPR-04 SERIES

SPECIFICATIONS

MAX. OPERATING PRESSURE	250 BAR (3675 PSI)
MAX. FLOW CAPACITY	190 LPM (50 GPM)

DIMENSIONS

MPR-04P

Inch (mm)

