

MODULAR PRESSURE REDUCING VALVE

MPR-06 SERIES

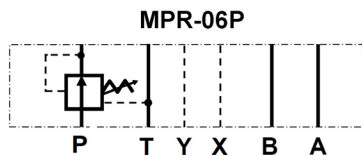


FEATURES

•The modular adjustable pressure reducing valve will ensure that the operating pressure in a branch of a hydraulic system will be maintained at a lower setting than that of the main system pressure. The valve functions on the P port and is internally drained. Adjustment is made with a calibrated knob, standard with the valve.

As a modular valve, this valve mounts between an NFPA D08 size directional control valve and the sub-plate. A longer than standard bolt kit is required when mounting modular valves in a stack. Refer to bolt kits.

Symbol



Model Code

MPR – 06 P – K – 2 – ** -N

1

2

3

4

5

6

1 Series

MPR: Modular Pressure Reducing Valve

2 Mounting Style

06: NFPA Size D08

3 Function Port

P: P Port

4 Adjustment Style

K: Adjusting Knob

5 Pressure Adj. Range

1: 8-70 BAR (120-1000 PSI)

2: 35-40 BAR (500-2000 PSI)

3: 70-210 BAR (1000-3000 PSI)

6 Design Number

MODULAR PRESSURE REDUCING VALVE

MPR-06 SERIES

SPECIFICATIONS

MAX. OPERATING PRESSURE	250 BAR (3675 PSI)
MAX. FLOW CAPACITY	200 LPM (53 GPM)

DIMENSIONS

● MPR-06-K

