

MODULAR RELIEF VALVE

MRF-02 SERIES



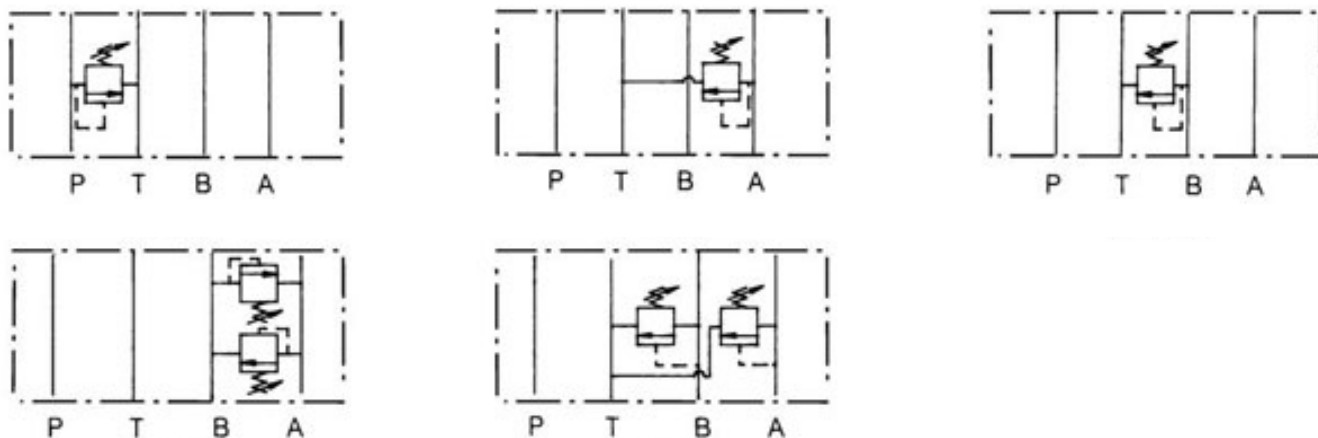
FEATURES

- The modular adjustable relief valve is designed to limit the operating pressure in a hydraulic system or in a branch of the system to a maximum set pressure. The internal piston moves to smoothly relieve the pressure when the system pressure reaches the desired setting, maintaining stable pressure control and repeatability.

Pressure relief is available on the P, A, B, and A & B ports. Adjustment is made with a calibrated knob, standard with the valve.

As a modular valve, this valve mounts between an NFPA D03 size directional control valve and the sub-plate. A longer than standard bolt kit is required when mounting modular valves in a stack. Refer to bolt kits.

Symbol



Model Code

MRF - 02 P - K - 1 - **

1

2

3

4

5

6

1 Series

MRF: Modular Relief Valve

2 Mounting Style

02: NFPA Size D03

3 Function Port

P: P Port

A: A Port

B: B Port

C: A & B Ports Relieve to Tank

D: A & B Ports Crossover

4 Adjustment Style

K: Adjusting Knob

5 Pressure Adj. Range

1: 8-70 BAR (120-1000 PSI)

2: 35-40 BAR (500-2000 PSI)

3: 70-210 BAR (1000-3000 PSI)

6 Design Number

MODULAR RELIEF VALVE

MRF-02 SERIES

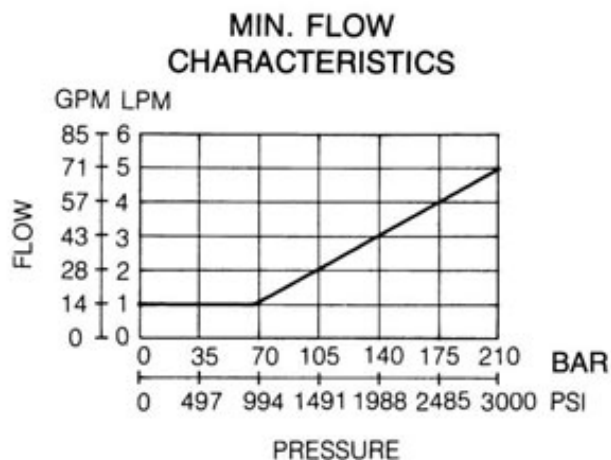
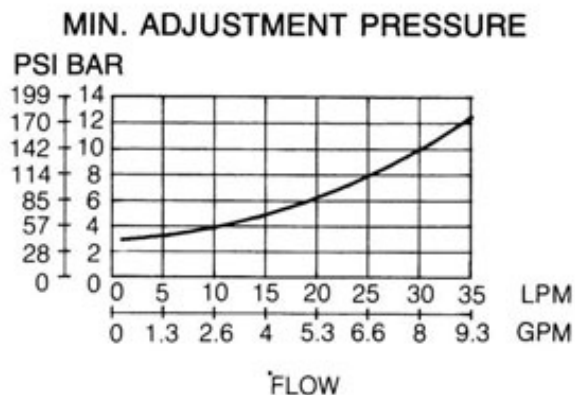
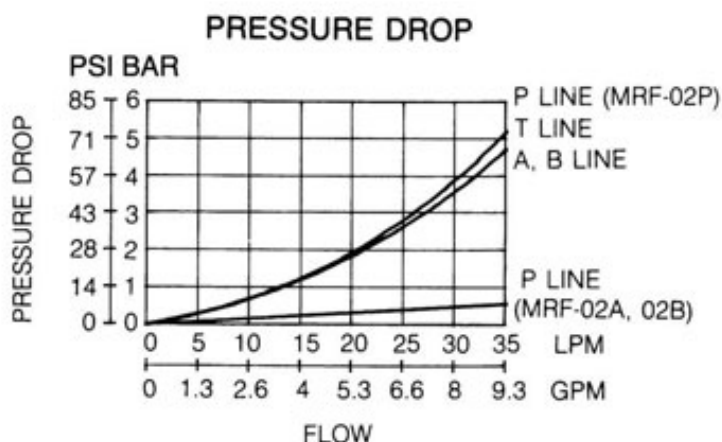
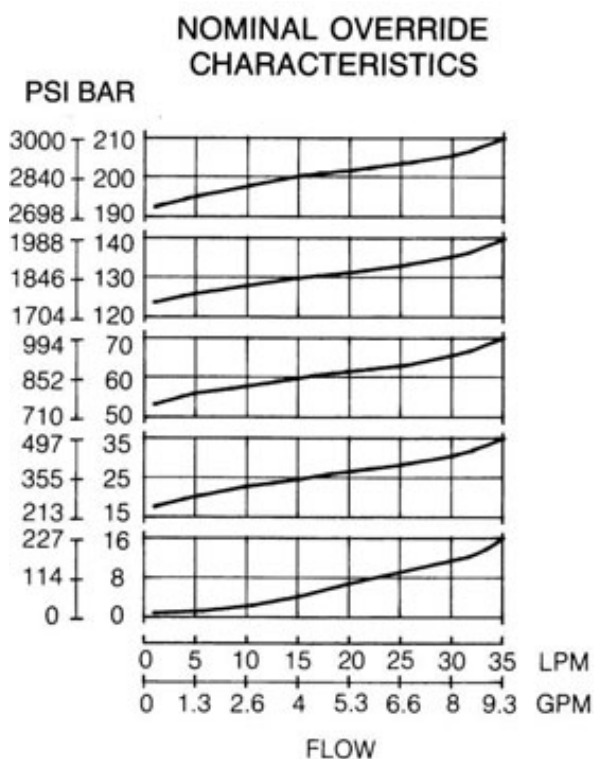
SPECIFICATIONS

MAX. OPERATING PRESSURE	250 BAR (3675 PSI)
MAX. FLOW CAPACITY	35 LPM (9.3 GPM)

PERFORMANCE CURVES

TEST CONDITIONS

Viscosity: 35 cSt (175 SSU) Temperature: 50° C (122° F)



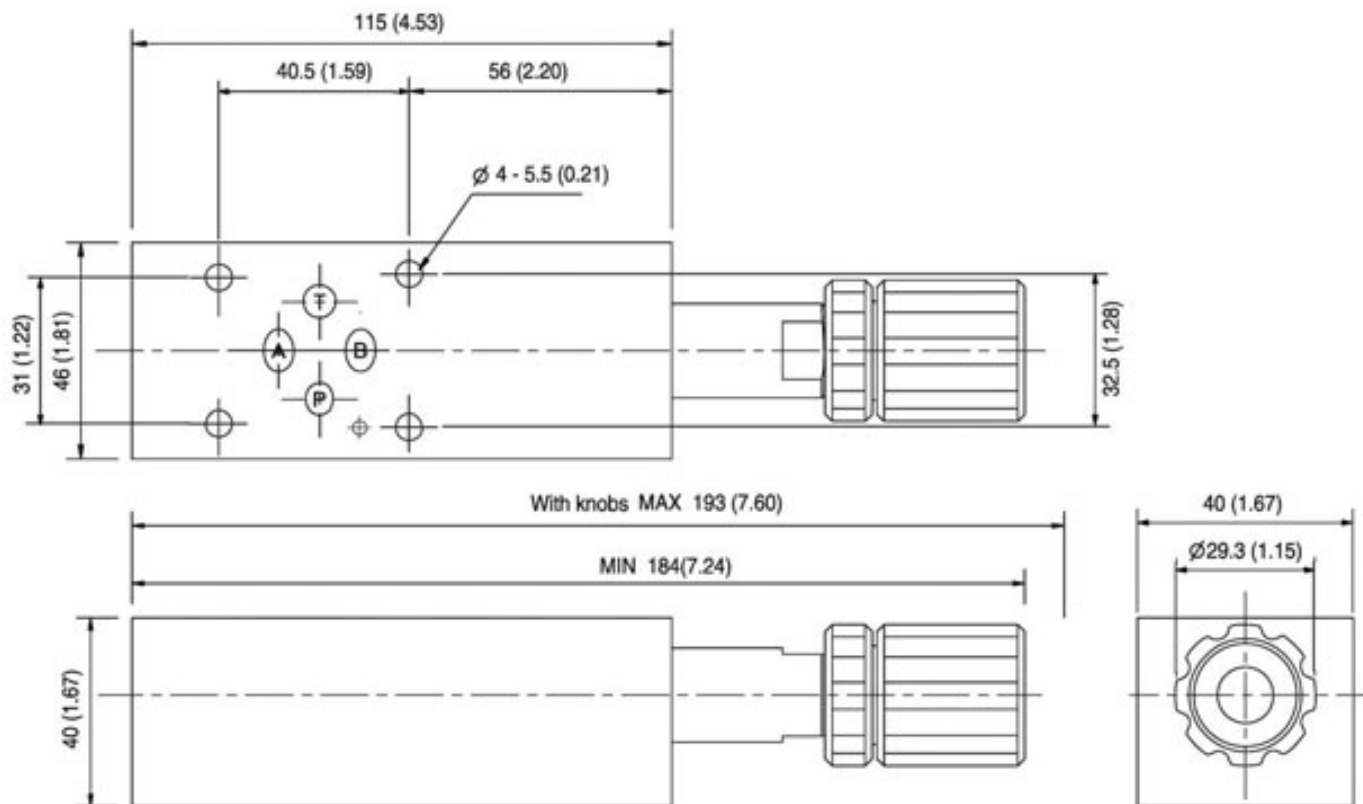
MODULAR RELIEF VALVE

MRF-02 SERIES

DIMENSIONS

UNIT: mm(inch) WEIGHT: 1.5 kgs(3.3 lbs) Mounting Surface: ISO 4401-AB-03-4-A

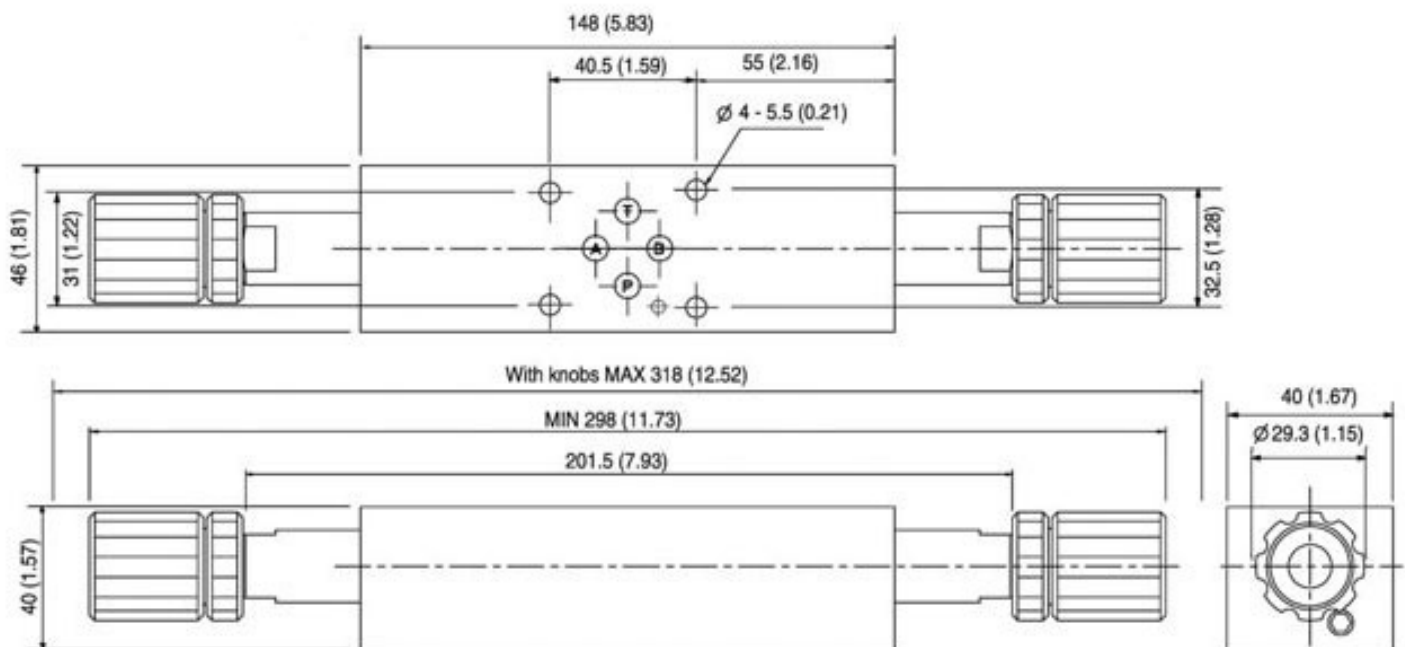
MRF-02C-K-**



DIMENSIONS

UNIT: mm(inch) WEIGHT: 1.5 kgs(3.3 lbs) Mounting Surface: ISO 4401-AB-03-4-A

MRF-02D-K-**



MODULAR RELIEF VALVE MRF-02 SERIES

DIMENSIONS

UNIT: mm(inch) WEIGHT: 1.5 kgs(3.3 lbs) Mounting Surface: ISO 4401-AB-03-4-A

MRF-A/B/P-K-**

