

MODULAR RELIEF VALVE

MRF-04 SERIES

FEATURES

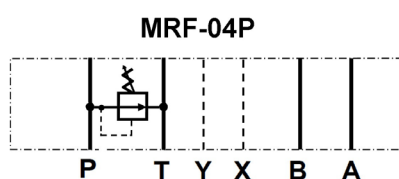
- The modular adjustable relief valve is designed to limit the operating pressure in a hydraulic system to a maximum set pressure. The internal piston moves to smoothly relieve the pressure when the system pressure reaches the desired setting, maintaining stable pressure control and repeatability.



Pressure relief is available on the P port. Adjustment is made with a calibrated knob, standard with the valve.

As a modular valve, this valve mounts between an NFPA D07 size directional control valve and the subplate. A longer than standard bolt kit is required when mounting modular valves in a stack. Refer to bolt kits.

Symbol



Model Code

MRF – 04 P – K – 3 – **

1

2

3

4

5

6

1 **Series**

MRF: Modular Relief Valve

2 **Mounting Style**

04: NFPA Size D07

3 **Function Port**

P: P Port

4 **Adjustment Style**

K: Adjusting Knob

5 **Pressure Adj. Range**

3: 70-210 BAR (1000-3000 PSI)

6 **Design Number**

MODULAR RELIEF VALVE

MRF-04 SERIES

SPECIFICATIONS

MAX. OPERATING PRESSURE	250 BAR (3675 PSI)
MAX. FLOW CAPACITY	190 LPM (50 GPM)

DIMENSIONS

MRF-04P

Inch (mm)

