

## MODULAR RELIEF VALVE

### MRF-06 SERIES



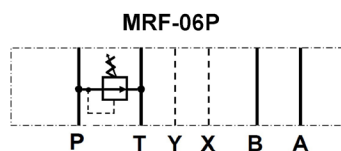
#### FEATURES

- The modular adjustable relief valve is designed to limit the operating pressure in a hydraulic system to a maximum set pressure. The internal piston moves to smoothly relieve the pressure when the system pressure reaches the desired setting, maintaining stable pressure control and repeatability.

Pressure relief is available on the P port. Adjustment is made with a calibrated knob, standard with the valve.

As a modular valve, this valve mounts between an NFPA D08 size directional control valve and the subplate. A longer than standard bolt kit is required when mounting modular valves in a stack. Refer to bolt kits.

#### Symbol



#### Model Code

**MRF - 06 P - K - 3 - \*\***

1 2 3 4 5 6

1 **Series**  
MRF: Modular Relief Valve

2 **Mounting Style**  
06: NFPA Size D08

3 **Function Port**  
P: P Port

4 **Adjustment Style**  
K: Adjusting Knob

5 **Pressure Adj. Range**  
3: 70-210 BAR (1000-3000 PSI)

6 **Design Number**

Note: Inquire for availability of other port and pressure options.

## MODULAR RELIEF VALVE

### MRF-06 SERIES

#### SPECIFICATIONS

MAX. OPERATING PRESSURE	250 BAR (3675 PSI)
MAX. FLOW CAPACITY	200 LPM (53 GPM)

#### DIMENSIONS

##### ● MRF-06P-K

