

## MODULAR THROTTLE AND CHECK VALVE

### MT-03 SERIES

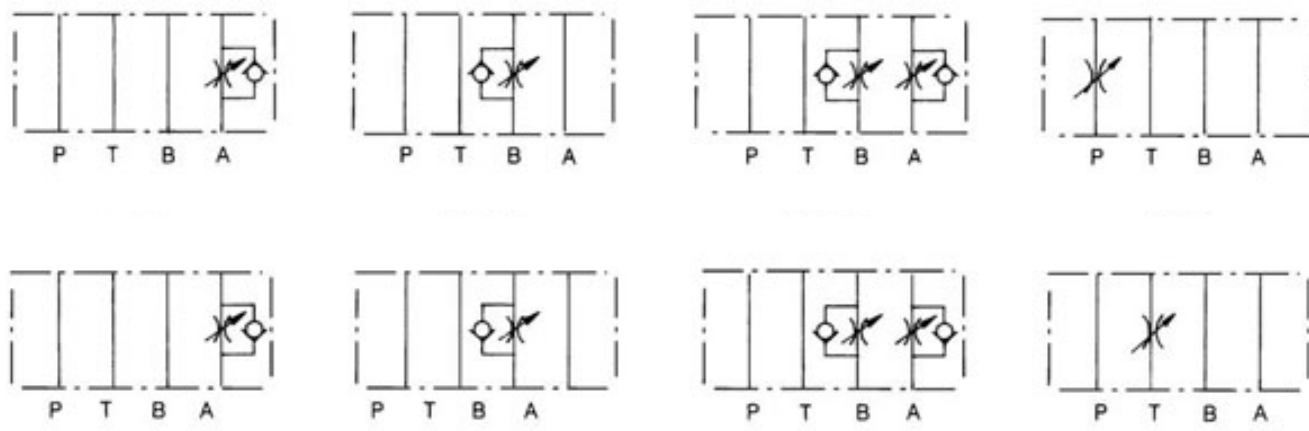


#### FEATURES

The modular adjustable flow control valve functions as a needle valve flow restrictor in one direction in a branch of a circuit, with free flow in the opposite direction. It may be specified to operate on the A, B, or A & B ports in either a “meter-in” or “meter-out” configuration. Adjustment is made with a calibrated knob, standard with the valve.

As a modular valve, this valve mounts between an NFPA D05 size directional control valve and the sub-plate. A longer than standard bolt kit is required when mounting modular valves in a stack. Refer to bolt kits.

#### Symbol



#### Model Code

**MT – 03 W – K – I – \*\***

1 2 3 4 5 6

**1 Series**  
**MT:** Modular Throttle and Check Valve (Flow Control)

**2 Mounting Style**  
**03:** NFPA Size D05

**3 Function Port**  
**A:** A Port  
**B:** B Port  
**P:** P Port  
**T:** T Port  
**W:** A & B Ports

**4 Adjustment Style**  
**K:** Adjusting Knob

**5 Control Function**  
**No Code:** Meter Out  
**I:** Meter In

**6 Design Number**

# MODULAR THROTTLE AND CHECK VALVE MT-03 SERIES

## SPECIFICATIONS

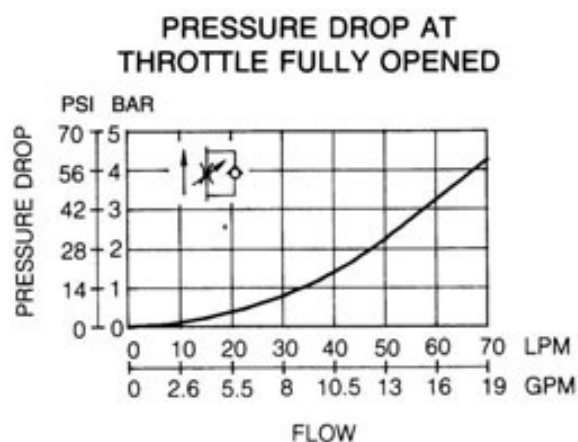
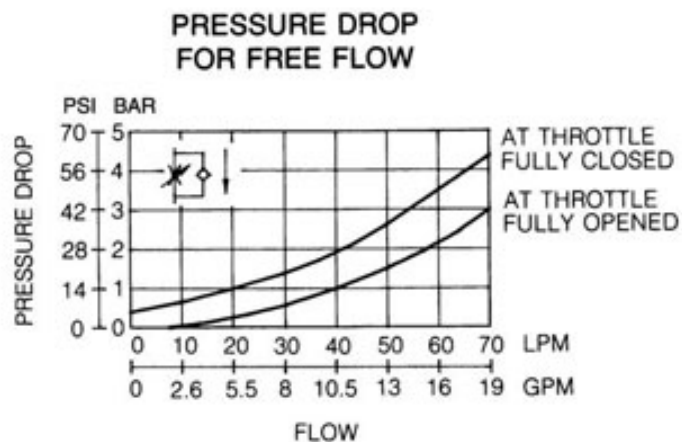
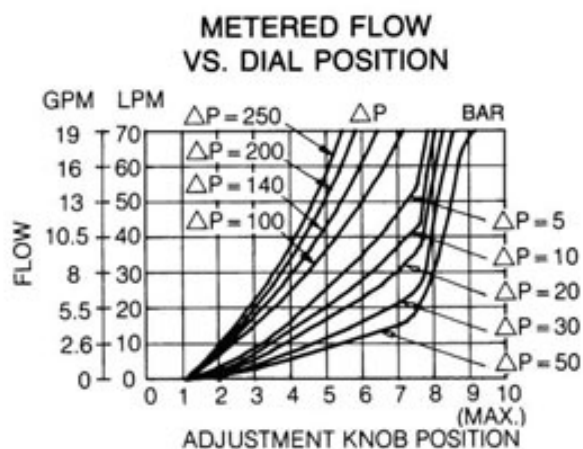
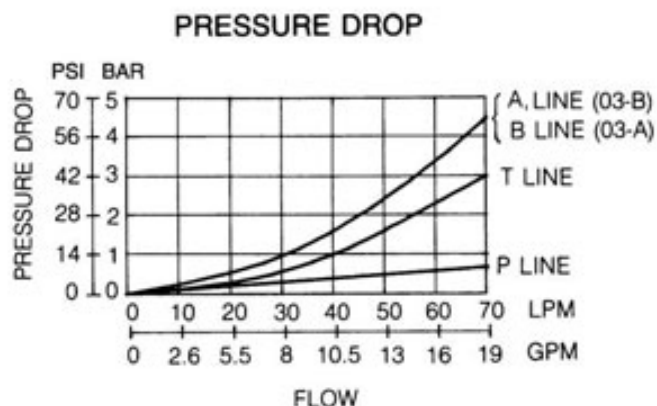
MAX. OPERATING PRESSURE	250 BAR (3675 PSI)
MAX. FLOW CAPACITY	35 LPM (9.3 GPM)

## PERFORMANCE CURVES

Models with MT-03W/A/B

### TEST CONDITIONS

Viscosity: 35 cSt (175 SSU) Temperature: 50° C (122° F)



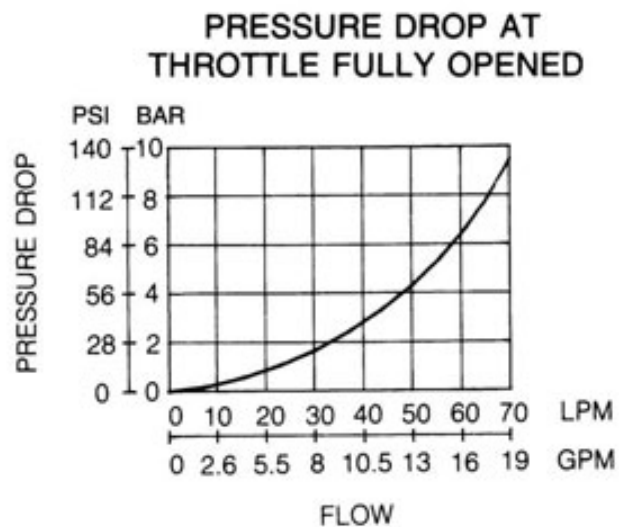
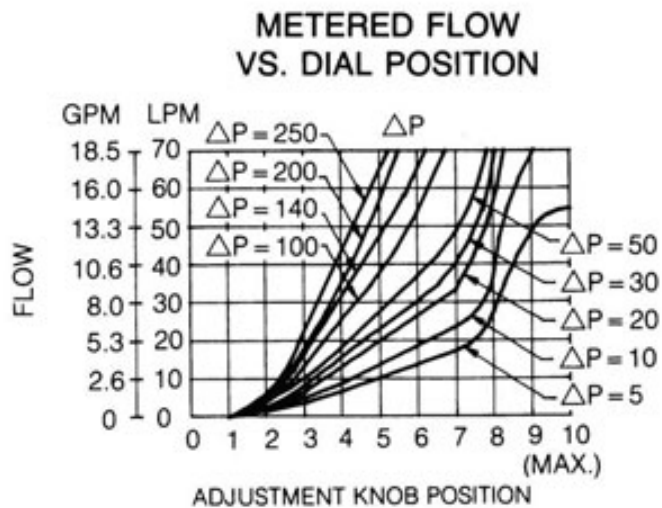
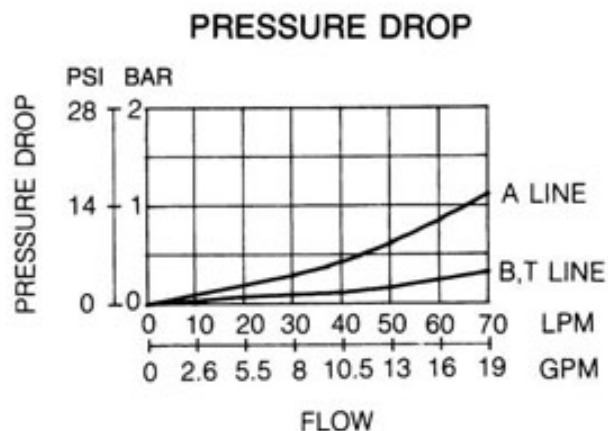
## MODULAR THROTTLE AND CHECK VALVE MT-03 SERIES

### PERFORMANCE CURVES

Models with MT-P/T

#### TEST CONDITIONS

Viscosity: 35 cSt (175 SSU) Temperature: 50° C (122° F)





## MODULAR THROTTLE AND CHECK VALVE MT-03 SERIES

### DIMENSIONS

UNIT: mm(inch) WEIGHT: 2.8 kgs(6.171 lbs) Mounting Surface: ISO 4401-AB-03-4-A

MT-03B-\*-40

